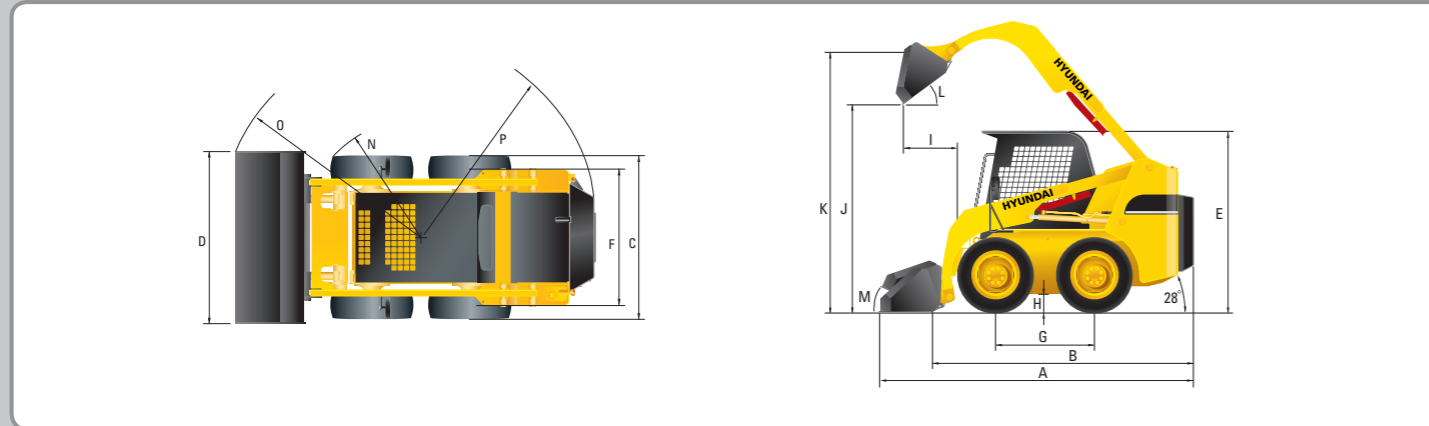


Dimension



Specification

DESCRIPTION	UNIT	HSL650-7A	HSL850-7A	
Rated operating capacity	kg (lb)	650 (1,433)	860 (1,892)	
Tipping load	kg (lb)	1,310 (2,888)	1,718 (3,780)	
Operating weight	kg (lb)	2,690 (5,787)	3,355 (7,381)	
ENGINE	Model	-	Kubota V2403	
	Gross output	kW (PS)	35.5 (48.3)	55.4 (75.3)
	Net output	kW (PS)	34.3 (46.6)	53.5 (72.7)
	Rated speed	rpm	2,500	2,400
	Cooling	-	Water	Water
GENERAL	Steering controls	-	Hyd. Joystick Lever	
	Loader controls	-	Hyd. Joystick Lever	
	Tires-standard	-	10-16.5,6PR	
	Max. travel speed	km/h (mph)	11.5 (7.1)	
HYDRAULICS	Loader pump flow	l/mn (gpm)	66.3 (17.5)	
	Loader pressure	kg/cm ² (psi)	175 (2,489)	
	Length with bucket	A mm (in)	3,270 (128.7)	
DIMENSIONS	Width, less bucket	C mm (in)	1,515 (59.6)	
	Height to cap top	E mm (in)	1,965 (77.4)	
	Tread	F mm (in)	1,255 (49.4)	
	Wheelbase	G mm (in)	990 (39.0)	
	Length, less bucket	B mm (in)	2,625 (103.3)	
	Ground clearance	H mm (in)	183 (7.2)	
	Turn radius, bucket	O mm (in)	1,935 (76.2)	
	Turn radius, front tire	N mm (in)	1,260 (49.6)	
	Turn radius, rear and corner	P mm (in)	1,560 (61.4)	
	Rear departure angle	-	28°	
	Height to bucket pivot pin	K mm (in)	2,915 (114.8)	
	Max. dump height	J mm (in)	2,240 (88.2)	
	Dump angle	L	45°	
	Reach at max. dump	I mm (in)	550 (21.7)	
	Rollback at ground	M	27°	
	Bucket width	D mm (in)	1,625 (64.0)	
	Bucket cap. heaped	m ³ (ft ³)	0.31 (10.9)	
	Fuel capacity	l (gal)	60 (16)	
	Hyd reservoir capacity	l (gal)	38 (10)	

Standard Equipment

Hand throttle lever
Direct cooling system
Dual element aircleaner
Aux. piping (3-spool)
Joystick control system
Bow tie drive chain
Console
Mold dashboard
Canopy (ROPS/FOPS)
Room mirror
Vandalism protection
Spark arresting muffler (HSL850-7A)
Seat bar & seat belt

Optional Equipment

Pre-cleaner
Self-leveling system
Master switch
Backup alarm
Enclosed cab (ROPS/FOPS)
Heater
Air-con & heater
Defroster
Fenders
Side mirrors
Turn lamp
Beacon Light
Highflow system

Standard and optional equipment may vary.
Contact your Hyundai dealer for more information.
The machine may vary according to International standards.
The photos may include attachments and optional equipment that are not available in your area.
* Materials and specifications are subject to change without advance notice.
* All imperial measurements rounded off to the nearest pound or inch.



Some of the photos may include optional equipment.

HYUNDAI SKID STEER LOADER **Applied Tier 3 Engine**

HSL650-7A / HSL850-7A



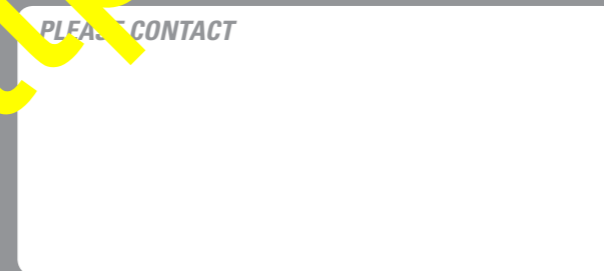
Head Office (Sales Office)
1 JEONHA-DONG, DONG-GU, ULSAN, KOREA Tel (82) (52) 202-7970, 7729, 097... (52) 202-... 7720

Americas Operation: Hyundai Construction Equipment Americas, Inc.
955 ESTES AVENUE, ELK GROVE VILLAGE IL, 60007 Tel (1) 847-437-3333 Fax (1) 847-437-... 714

Europe Operation: Hyundai Heavy Industries Europe N.V.
VOSSENDAAL 11, 2440 GEEL, BELGIUM Tel (32) 14-56-2200 Fax (32) 14-59-3405

India Operation: Hyundai Construction Equipment India Pvt., Ltd
PLOT NO.A-2, CHAKAN INDUSTRIAL AREA, VILL.- KHALUMBRE,
TALUK.- KHED., DIST.- PUNE 410 501, INDIA Tel (91) 21-3530-1700 Fax (91) 21-3530-1712

PLEASE CONTACT



www.hyundai-ce.com

2010. 06 Rev 0.



We build a better future

NEW Hyundai Skid Steer Loaders HSL 650-7A / HSL 850-7A

Comfortable & Safety

ROPS / FOPS cab is designed for maximum comfort, improved safety and excellent visibility. Sound and vibration has been reduced for improved operator comfort.



Smooth Controls

Buzzer Stop
Turn Signal
(Optional item)

Traveling & Steering
Joystick Lever



Horn
Aux SW

Working
Joystick Lever

Hydraulic Joystick Levers

An operator can easily drive the machine while operating the attachment without the use of foot pedals.

Some of the photos may include optional equipment.

Standing above the rest. Master of the Jobsite!

7A skid steer loaders are designed with plenty of power for maximum loading capacity along with excellent fuel efficiency. Hyundai skid steer loaders do more for less.



HSL 650-7A Engine

The high quality Kubota V2403 engine is designed for the perfect balance between performance, durability and efficiency. The V2403 provides enough power for jobs of all types with either a bucket or special attachment. (EPA tier III, EU stage III A emission certified)

48.3ps/2,500rpm

16.2kgf.m/1,600rpm

HSL 850-7A Engine

The high quality Kubota V3307-T engine is designed for the perfect balance between performance, durability and efficiency. The V3307-T provides enough power for jobs of all types with either a bucket or special attachment. (EPA tier III, EU stage III A emission certified)

75.3ps/2,400rpm

27kgf.m/1,500rpm



**High Power
Low Noise**

Some of the photos may include optional equipment.



Boom Locking System

Loader cylinder locking bar is provided for additional safety when servicing.



Excellent Visibility



Quick Attachment System

A quick attachment device improves cycle times and ease of operation.



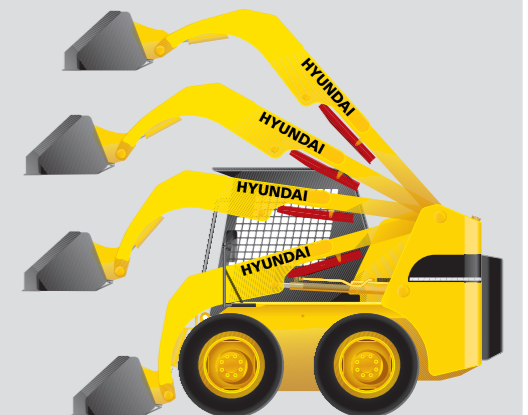
Dual Cab Safety Lock

Dual locking system for cab when in raised position insures operator safety when performing service and maintenance.



Self-leveling Control System

The self-leveling control system is an optional feature perfect for lifting applications. When raising the loader boom, the bucket positioning valve directs oil from the boom cylinder to the bucket cylinder to keep the bucket in a level position automatically throughout the cycle. This dramatically improves loading efficiency. This feature allows the operator to focus more on machine positioning and job details which improves overall productivity. Operator can concentrate on maneuvering and lifting tasks for fast cycle times. (Optional item)



Centralized design for easy maintenance!

Optimum location of regular maintenance components along with wide open access reduces machine downtime when performing regular service.



High Performance Dual Element Air Cleaner

Highly efficient, heavy duty, dual air cleaner provides additional engine protection and improved durability.



Some of the photos may include optional equipment.



Clogged Filter Indicator for Hydraulic Oil Filter

When hydraulic oil filter reaches full capacity, indicator light will illuminate signaling replacement.



Wide Open Engine Access

Cab and seat fully out of the way providing easy access to engine compartment.



Remote Engine Oil Filter (HSL850-7A)

The engine oil filter is remotely mounted for convenient access when servicing.



Fuse Box

A centralized fuse box provides added protection and durability to the onboard electrical system.



Frame Mounted Muffler (HSL850-7A)

The muffler is mounted to the machine frame to reduce vibration and noise and improve durability.



Hydraulic Oil Site Gauge

Hydraulic oil site gauge makes checking oil level easy and fast.