



# PARTS & SERVICE NEWS

|         |               |
|---------|---------------|
| REF NO. | A89-0034      |
| DATE    | Mar. 24, 1989 |

Page 1 of 11

**SUBJECT:** AIR QUICK-RELEASE VALVE ON HD465-3

**PURPOSE:** To introduce how to disuse the quick release valve to simplify the air system circuit.

**APPLICATION:** HD465-3 Dump Trucks, Serial Nos. 2001 thru 2278  
 HD465-3PB Dump Trucks, Serial Nos. 3001 thru 3028

**DESCRIPTION:**

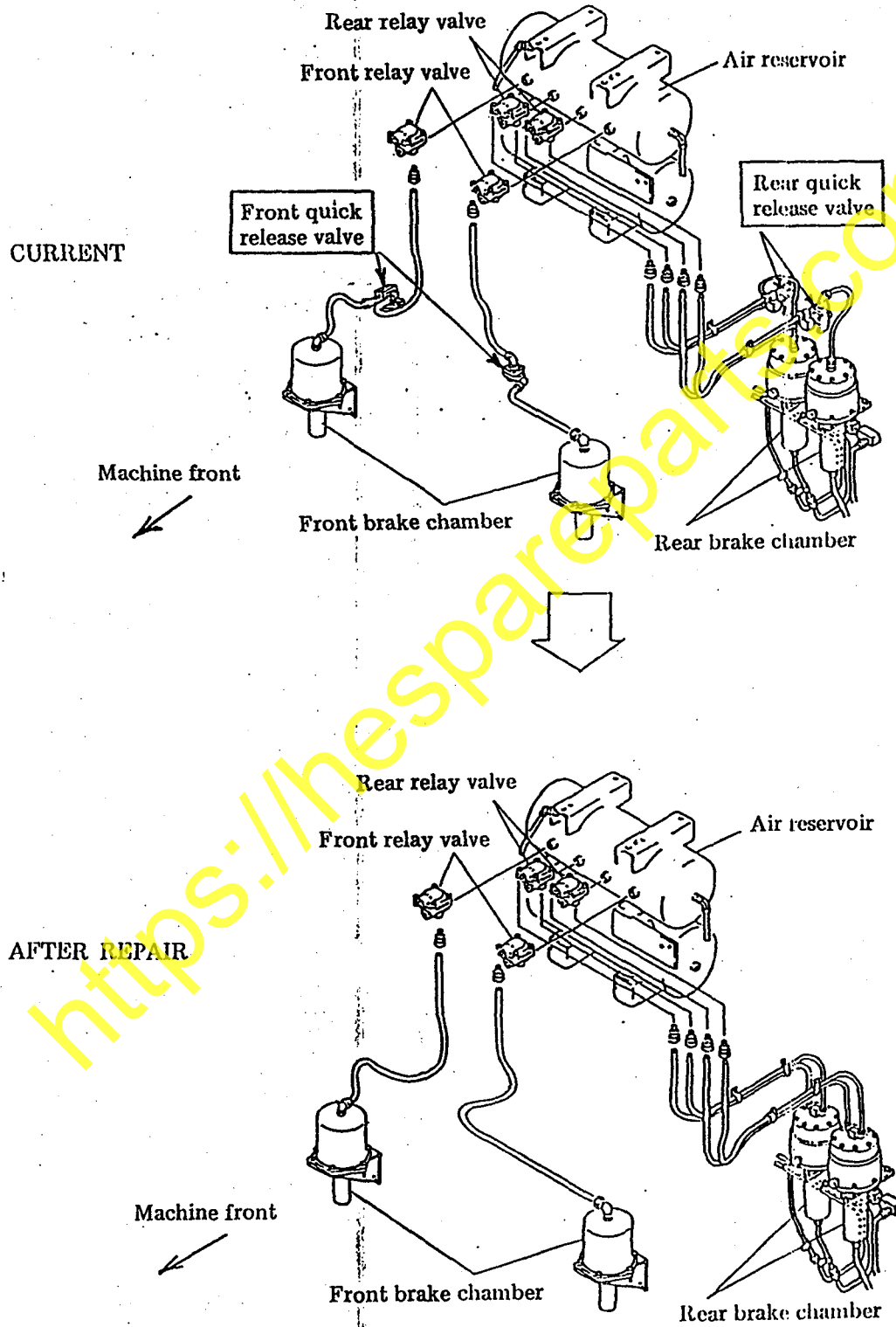
1. Introduction

This PARTS & SERVICE NEWS introduces how to disuse the current quick release valve to simplify the air system circuit on HD465-3 Dump Trucks. Disuse above valve when other parts are replaced for every 2000 hours or once a year.

**NOTE:** The current quick release valve is being used to release air to the atmosphere when the brake is released. However, even if the release valve is removed, the air will be released from the relay valve and no adverse effect will be caused on the performance of the brake.

2. Improvement

The quick release valve is removed from the air circuit between the relay valve and brake chamber, thus simplifying the air circuit as shown below.



## 3. Parts required when repairing

| No. | Part No.     | Part name | Q'ty/unit | Remarks |
|-----|--------------|-----------|-----------|---------|
| 1   | 07822-00820  | TUBE      | 2         |         |
| 2   | 07822-00808  | TUBE      | 4         |         |
| 3   | 562-97-11610 | JOINT     | 2         |         |
| 4   | 08036-22514  | CLIP      | 2         |         |
| 5   | 01010-50820  | BOLT      | 2         |         |
| 6   | 01643-00823  | WASHER    | 2         |         |
| 7   | 01580-10806  | NUT       | 2         |         |
| 8   | 07831-00813  | SLEEVE    | 12        |         |

<https://hespareparts.com/>

## 4. Repair procedure

## 4-1 Before work

Put the machine in the straight travel position, then park the machine on flat ground, apply the parking brake, and put chocks under the tires.

## 4-2 Removing the parts

Note: For the parts shown by the Part ref. Nos. only in each figure, see the parts book applicable to the figure on the same page.

- (1) Removing the front quick release valve (See Fig. 1 based on Fig. 3503B in parts book)  
Remove parts (shown in list of parts No. 1 below) from between two front relay valves (567-35-11201) and two front brake chambers (561-35-61501) mounted on both ends of top-side air reservoir (569-35-31310).

NOTE: Do not remove body (281-35-19980), a component of connector (281-35-19590) (4) mounted on the relay valve but remove other connector components such as nuts (281-35-19930) and sleeves (07831-00813). Take care not to lose the removed sleeve nuts because they must be reused.

List of Parts No. 1 (Parts to be removed)

Fig. No. 3503B

| Index No. | Part No.     | Part name | Q'ty | Remark         |
|-----------|--------------|-----------|------|----------------|
| 1         | 07822-00815  | TUBE      | 1    |                |
| 2         | 07822-00816  | TUBE      | 1    |                |
| 3         | 07822-00804  | TUBE      | 1    |                |
| 6         | 07834-00817  | ELBOW     | 2    | Reuse          |
| 7         | 07831-00813  | SLEEVE    | 2    |                |
| 8         | 07832-00817  | NUT       | 2    |                |
| 9         | 281-34-12501 | VALVE     | 2    |                |
| 10        | 07042-20312  | PLUG      | 2    |                |
| 11        | 01010-50820  | BOLT      | 4    |                |
| 12        | 01643-30823  | WASHER    | 4    |                |
| 13        | 07822-00803  | TUBE      | 1    |                |
| 14        | 07834-00817  | ELBOW     | 2    |                |
| 15        | 07831-00813  | SLEEVE    | 4    |                |
| 16        | 07832-00817  | NUT       | 4    | Reuse (2 pcs.) |

FIG. 3503B AIR PIPING (3/5)

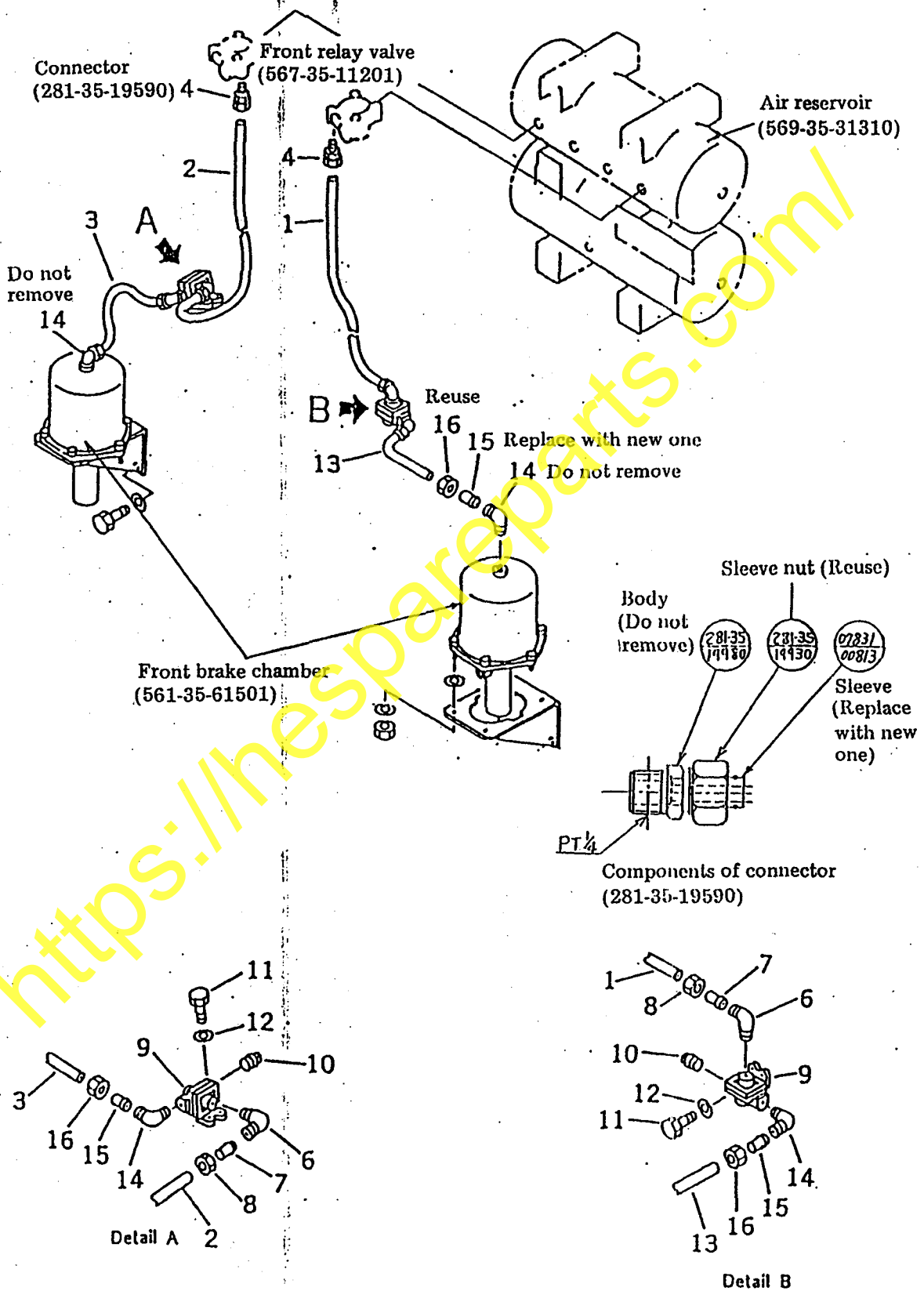


Fig. 1 Removing the front quick release valve

- (2) Removing the rear quick release valve (See Fig. 2 based on Fig. 3504A in parts book)  
Remove the parts (shown in list of parts No. 2 below) from between two rear relay valves (567-35-11201) and two rear brake chambers (561-35-61201) mounted at the center of top-side air reservoir (569-35-31310).

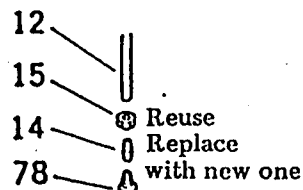
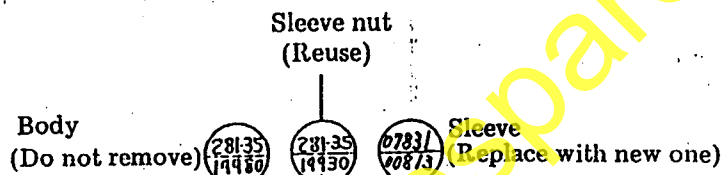
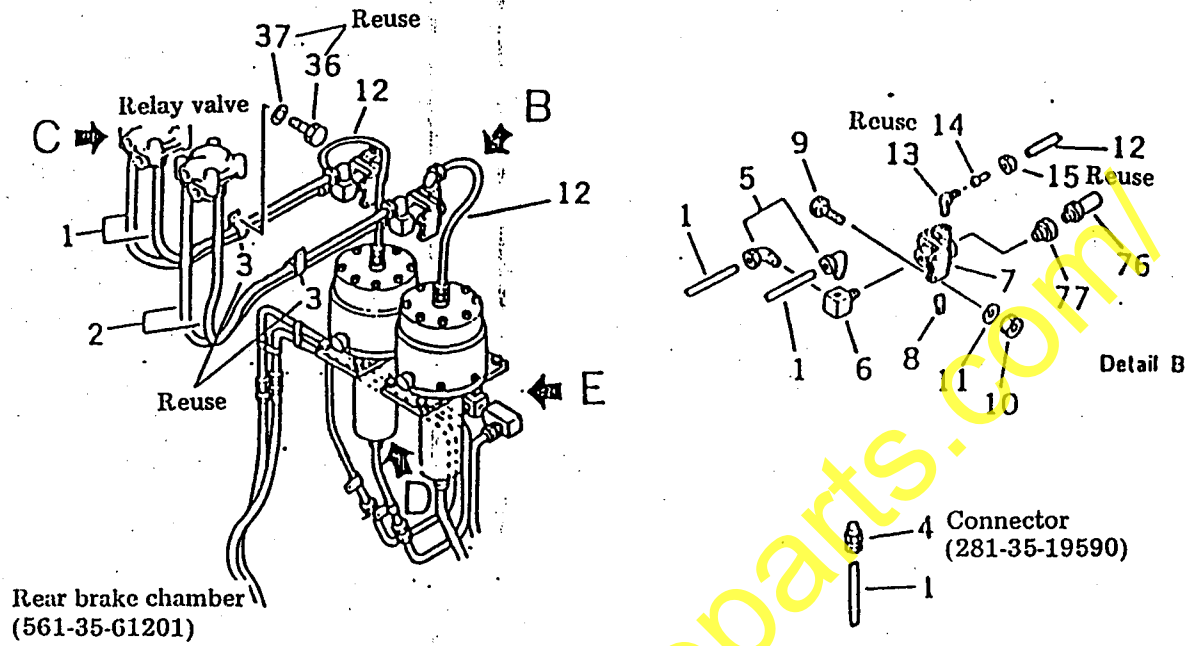
Note: Do not remove body (281-35-19980), a component of connector (281-35-19590) (4) mounted on the relay valve but remove other components of the connector such as sleeve nuts (281-35-19930) and sleeves (07831-00813).  
Take care not to lose the removed sleeve nuts because they must be reused.

## List of Parts No. 2 (Parts to be removed)

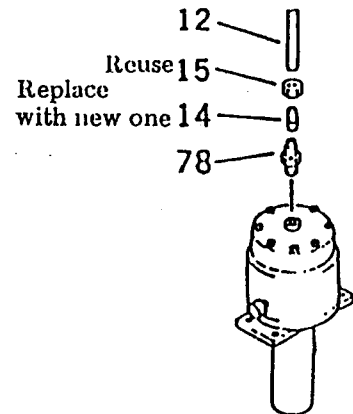
Fig. No. 3504A

| Index No. | Part No.     | Part name   | Q'ty | Remark |
|-----------|--------------|-------------|------|--------|
| 1         | 07822-00807  | TUBE        | 2    |        |
| 2         | 07822-00807  | TUBE        | 2    |        |
| 3         | 08036-22514  | CLIP        | 2    | Reuse  |
| 5         | 281-35-19540 | ELBOW ASS'Y | 4    |        |
| 6         | 566-35-11360 | JOINT       | 2    |        |
| 7         | 281-34-12501 | VALVE       | 2    |        |
| 8         | 07042-20312  | PLUG        | 2    |        |
| 9         | 01010-50825  | BOLT        | 4    |        |
| 10        | 01580-10806  | NUT         | 4    |        |
| 11        | 01643-30823  | WASHER      | 4    |        |
| 12        | 07822-00803  | TUBE        | 2    |        |
| 13        | 07834-00817  | ELBOW       | 2    | Reuse  |
| 14        | 07831-00813  | SLEEVE      | 4    |        |
| 15        | 07832-00817  | NUT         | 4    |        |
| 36        | 01010-51016  | BOLT        | 2    | Reuse  |
| 37        | 01643-31032  | WASHER      | 2    |        |
| 76        | 07812-00246  | MUFFLER     | 2    |        |
| 77        | 07326-00302  | ADAPTER     | 2    |        |
| 78        | 07836-00817  | CONNECTOR   | 2    |        |

FIG. 3504A AIR PIPING (4/5)



Detail D



Detail E

Fig. 2 Removing the rear quick release valve

#### 4-3 Assembly (see Fig. 3)

- (1) **Connecting the tubes between the front relay valves and front brake chambers**  
To connect newly obtained two tubes (07822-00820) to between two front relay valves (567-35-11201) and two front brake chambers (561-35-61501), first install removed sleeve nuts and newly obtained sleeves (281-35-19930 and 07831-00813 respectively) to connectors (281-35-19590) of the tubes on the side of the front relay valves, then other removed sleeve nuts and newly obtained sleeves (now 07832-00817 and 07831-00813 respectively) to the other ends of the tubes on the side of the front brake chambers.  
To secure above two tubes (07822-00820) however, use the clips same as the current ones.
  
- (2) **Connecting the tubes between the rear relay valves and rear brake chambers**  
Recall that connectors (07836-00817) have been removed from two rear brake chambers (561-35-61201).  
In place of these removed connectors, now install newly obtained two joints (562-97-11610) to above two rear brake chambers, then four elbows (07834-00817) that have been removed from above rear brake chambers.  
To connect newly obtained four tubes (07822-00808) to between two rear relay valves (567-35-11201) and two rear brake chambers (561-35-61201), first install removed sleeve nuts and newly obtained sleeves (281-35-19930 and 07831-00813 respectively) to the connectors (281-35-19590) of the tubes on the side of the rear relay valves, then other removed sleeve nuts and newly obtained sleeves (now 07832-00817 and 07831-00813 respectively) to joints (562-97-11610) on the side of the rear brake chambers.  
When securing above four tubes (07822-00808), do to the current locations by reusing removed clips (08036-22514) and also install newly obtained clips (08036-22514) by using the threaded holes that had been used to secure the rear quick release valves (281-34-12501).



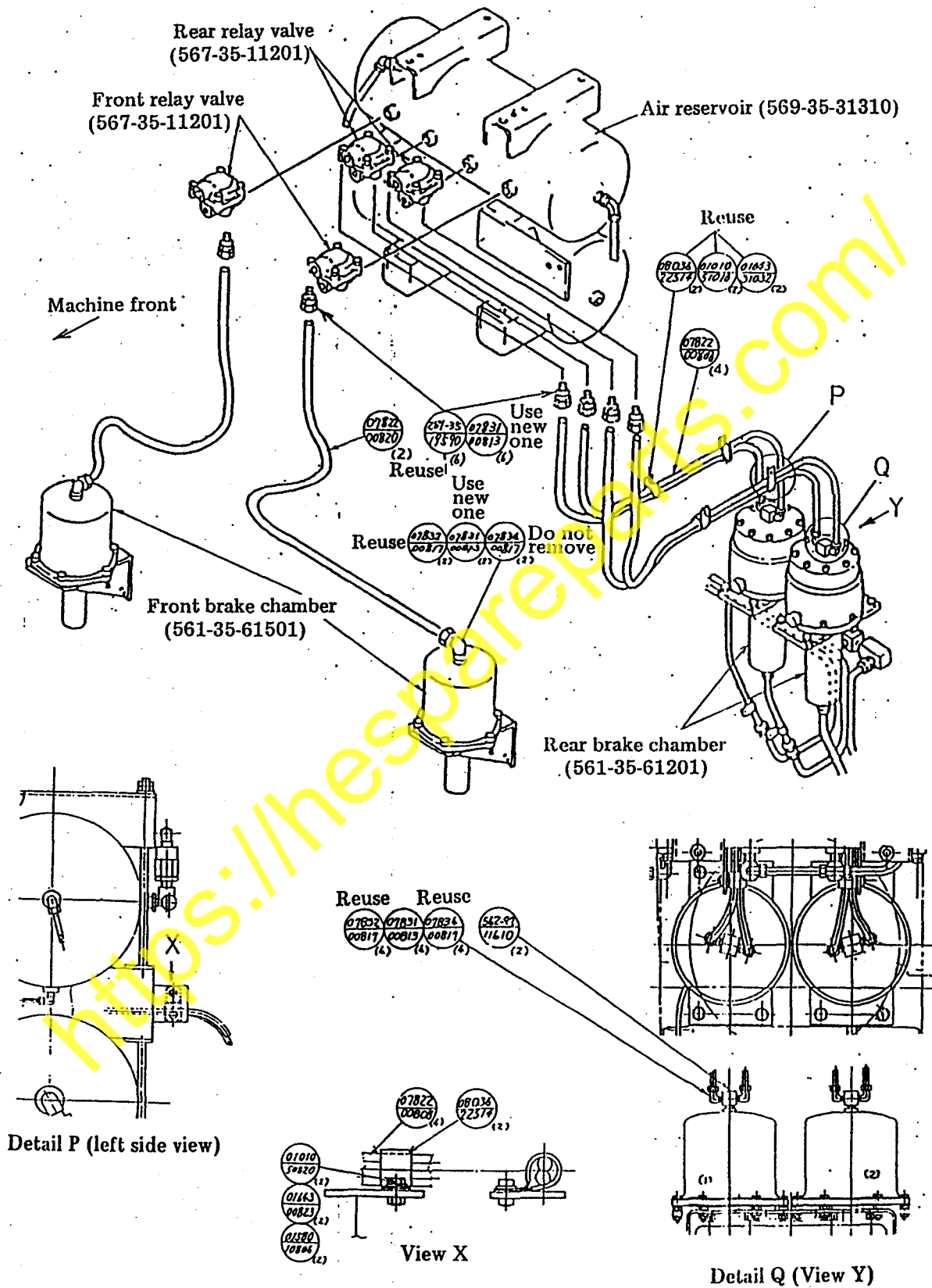
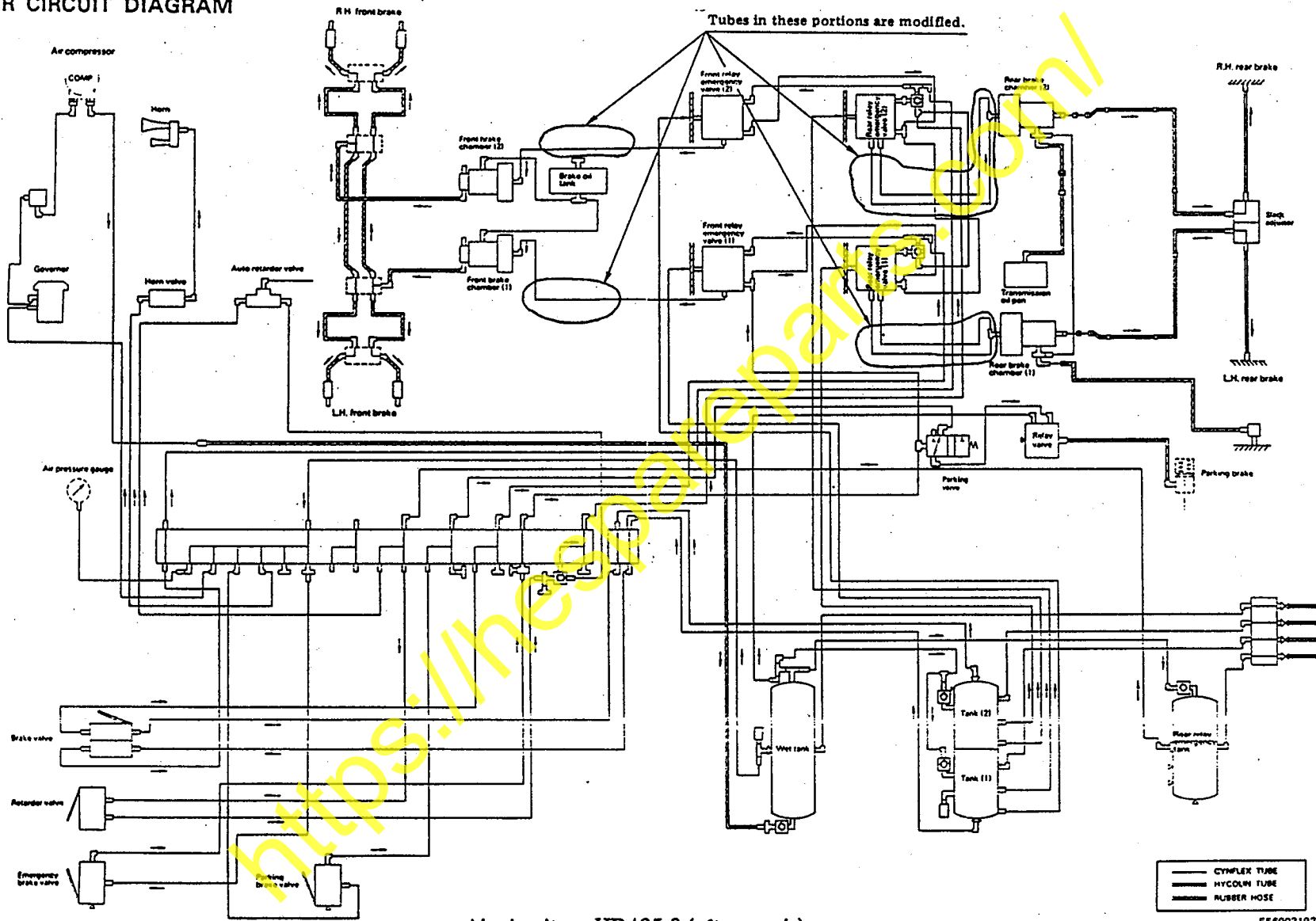


Fig. 3 Assembling



# AIR CIRCUIT DIAGRAM



Air circuit on HD465-3 (after repair)

F56903193

