

# PARTS & SERVICE NEWS

REF NO.	<b>A910064A</b>
DATE	<b>Sep. 24, 1999</b>

Page 1 of 9

This PARTS & SERVICE NEWS supersedes the previous issue No. A910064 dated Mar. 4, 1991 which should be discarded.

**SUBJECT:** INSTALATION OF SERVICE KIT FOR PREVENTIVE MAINTENANCE ON WA700-1A

**PURPOSE:** To describe how to install the Pm-clinic measuring parts

**APPLICATION:** WA700-1A Wheel Loaders, Serial Nos. 10001 and up

**FAILURE CODE:** A00050

## DESCRIPTION:


### 1-1. Introduction

When installing the sensors, couplers, etc. for the purpose of Pm-clinic service, install them in the places shown in the table below according to this PARTS & SERVICE NEWS.





- Check points and necessary parts

No.	Check point	Necessary parts	No. of places	See page
<b>ENGINE</b>				
1	Exhaust temperature	Thermal sensor	2	} 3/9
2	Boost (air) pressure	Quick coupler	2	
3	Lube oil pressure	Quick coupler	1	
<b>TORQUE CONVERTER</b>				
4	T/C. inlet oil pressure	Quick coupler	1	} 4/9
5	T/C. outlet oil pressure	Quick coupler	1	
<b>TRANSMISSION</b>				
6	Main relief oil pressure	Quick coupler	1	} 5/9
7	Lube oil pressure	Quick coupler	1	
8	Modulating oil pressure	Quick coupler	1	
9	Reducing oil pressure	Quick coupler	1	
<b>STEERING</b>				
10	Relief oil pressure	Quick coupler	1	6/9
<b>WORK EQUIPMENT</b>				
11	Relief oil pressure	Quick coupler	1	7/9

### 1-2. Revised places:

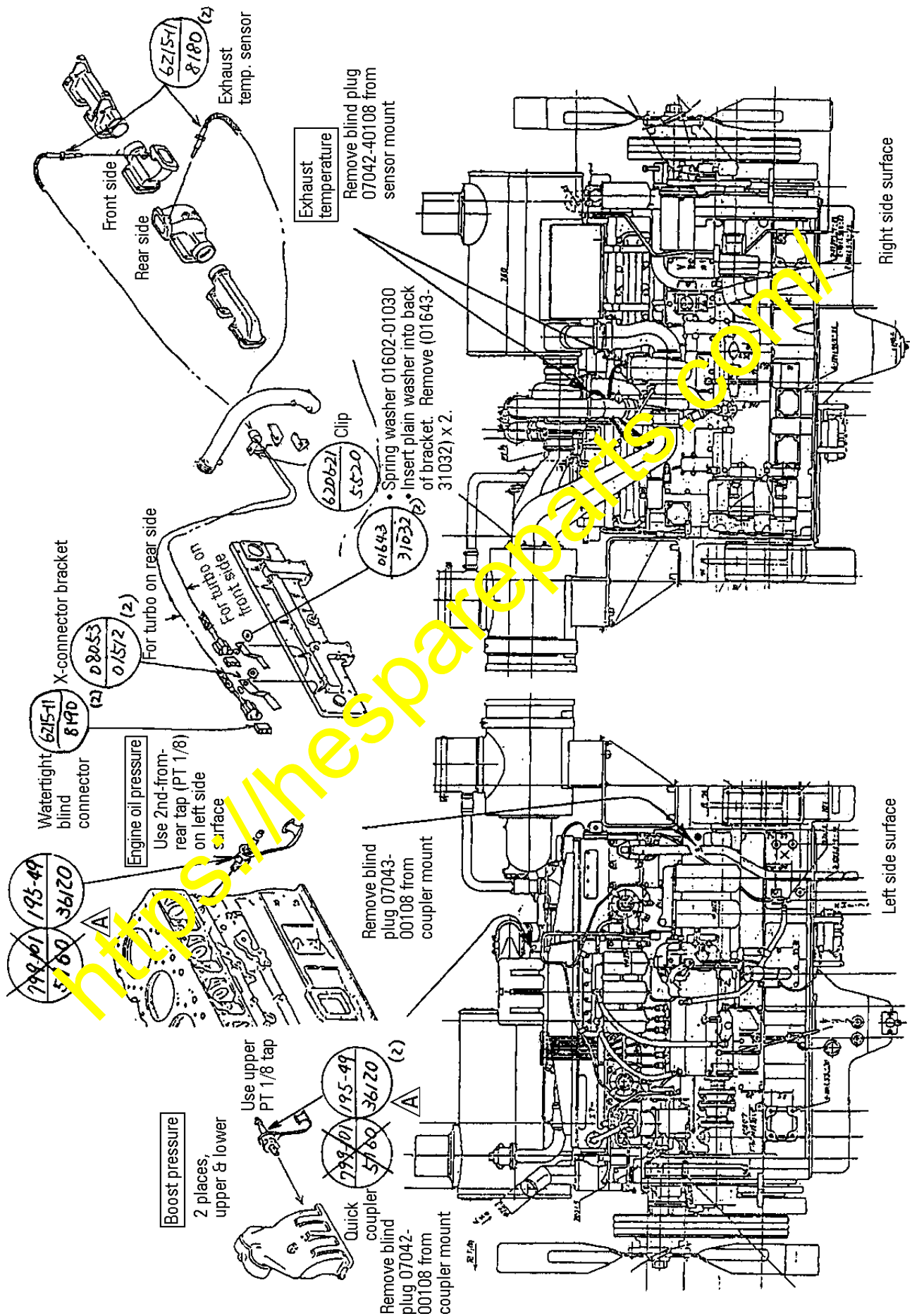
11 places 	Sep. 24 1999	To inform unification of the part number of the pressure checking nipple
---	--------------	--

## 2. Parts needed Kit Part No. 428-S94-0510

No.	Part No.	Part Name	Q'ty/ machine	Remarks
1	6215-11-8180	SENSOR	2	} For exhaust temp. sensor
2	6215-11-8190	BLIND PLUG	2	
3	6206-21-5520	CLIP	1	
4	08053-01512	CLIP (CONNECTOR)	2	
5	01643-31032	WASHER	2	
 6	195-49-36120 <del>799-101-5160</del>	NIPPLE	11	}  The current part can also be used. Application: Boost pressure x 2 Engine oil pressure x 1 T/C inlet oil pressure x 1 T/C outlet oil pressure x 1 T/M main relief oil pressure x 1 T/M lube oil pressure x 1 T/M modulating oil pressure x 1 T/M reducing oil pressure x 1 Steering oil pressure x 1 Hydraulic oil pressure x 1
 <del>8</del> 9	07323-20100	ELBOW (for T/C inlet oil pressure)	1	
7	428-54-12710	STEP	1	
8	428-S94-1110	COVER(R.H)	1	
 10	428-S94-0510	PM2 SERVICE KIT	1	

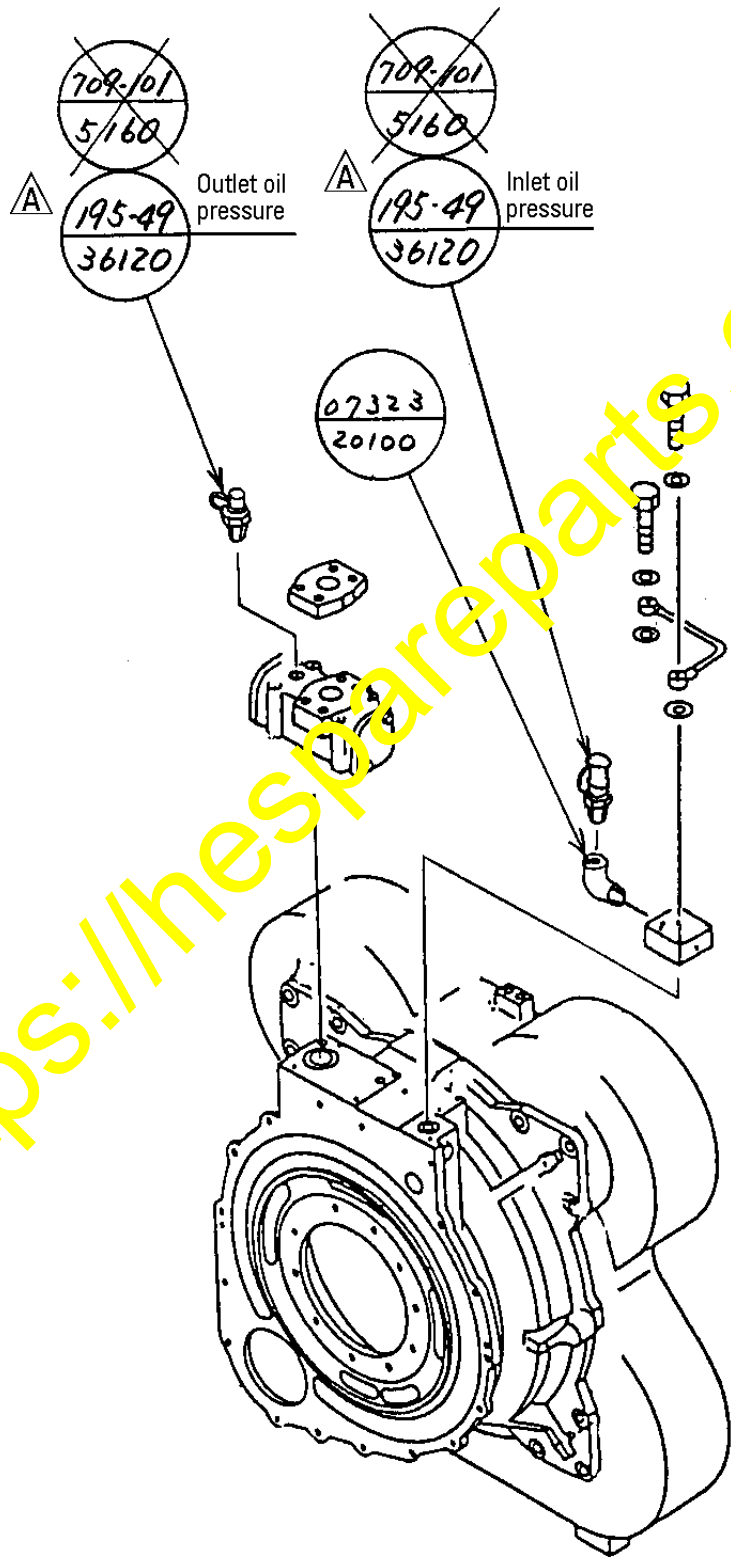
<https://hespareparts.com/>

### 3-1. Installing the PM2 sensor on SA6D170 for WA700




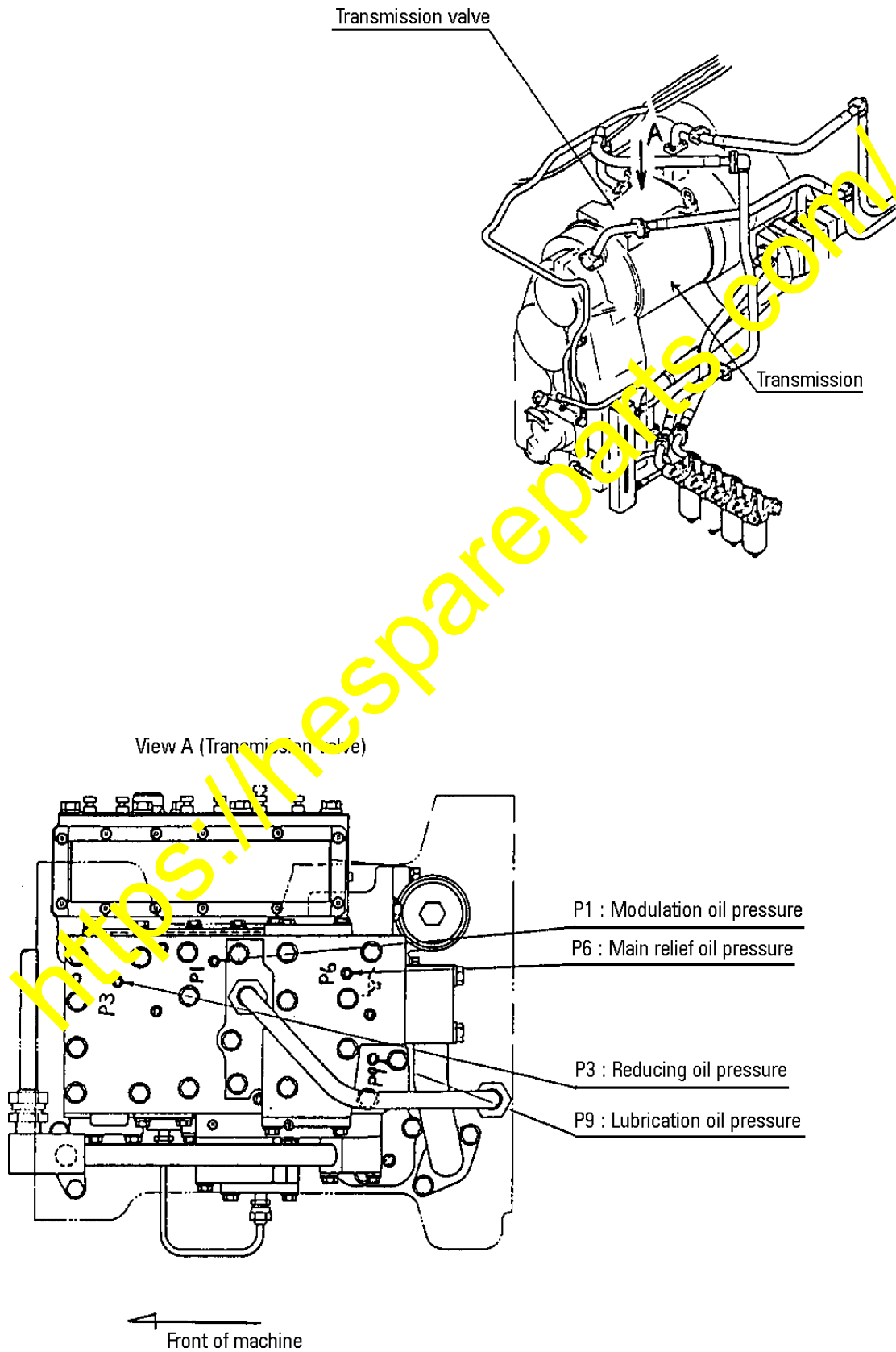
3-2. Installing the quick couplers used for checking torque converter inlet oil pressure and outlet oil pressure

- Fit the couplers (2 places) at the indicated positions.



### 3-3. Installing the quick couplers used for checking transmission oil pressure

- Remove blind plugs P1, P6, P3 and P9.  
Fit quick couplers (~~799-101-5160~~) to  
plug holes. (4 places)  (195-49-36120)



3-4. Installing the quick coupler used for checking steering relief oil pressure

- Fit the coupler to the indicated tube (428-62-11292) in the front frame.
- If the tube does not have any PT thread tap for coupler installation, fit the coupler by using either of the following two methods.

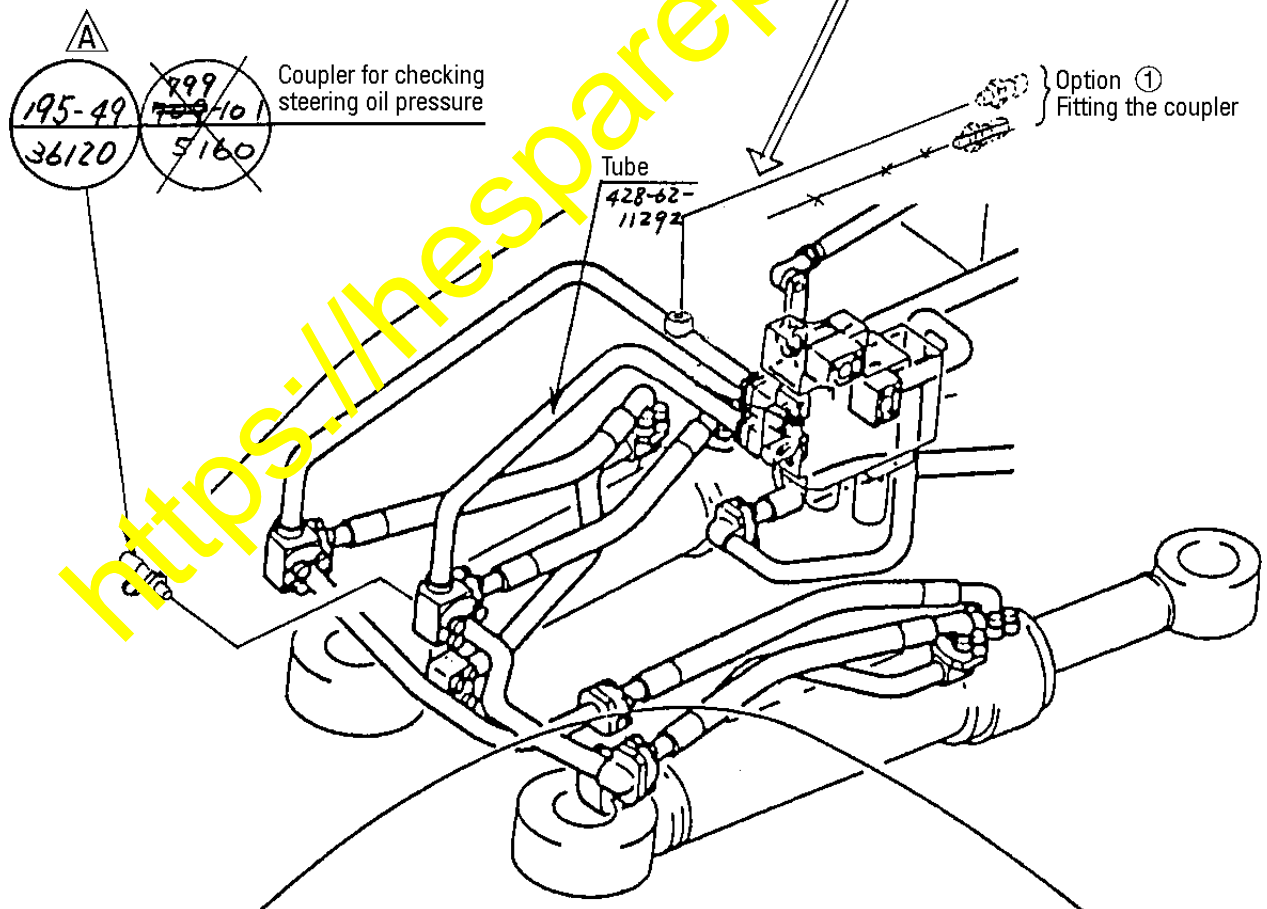
Option ① :

Fitting the coupler at the position (option ①) shown in the illustration below.

The coupler must be installed and removed each time when checking oil pressure is necessary. (Don't attempt to operate the machine with the coupler left installed.)

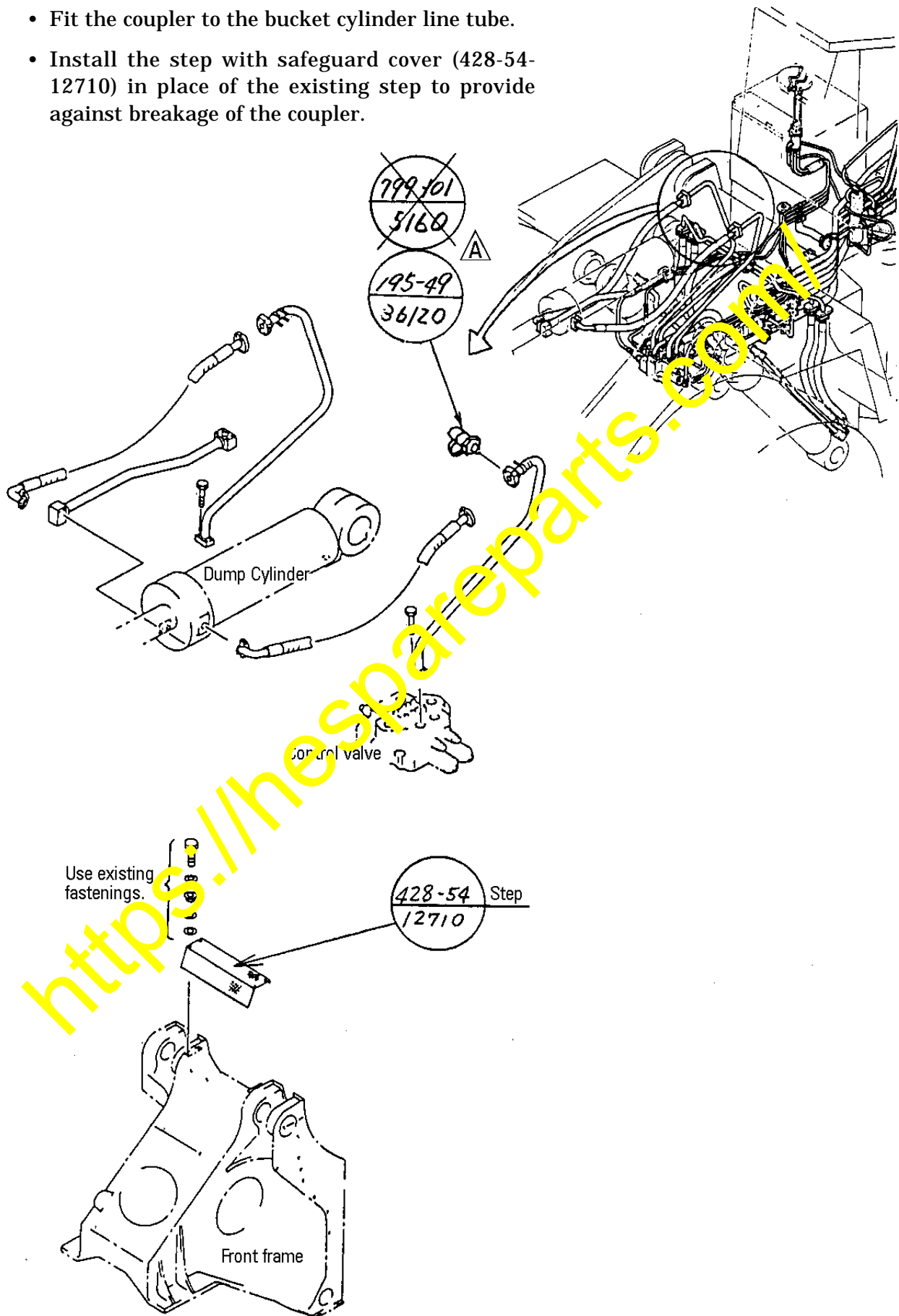
Option ② :

Reworking the tube (428-62-11292).  
(For tube reworking procedure, see page 8/9.)



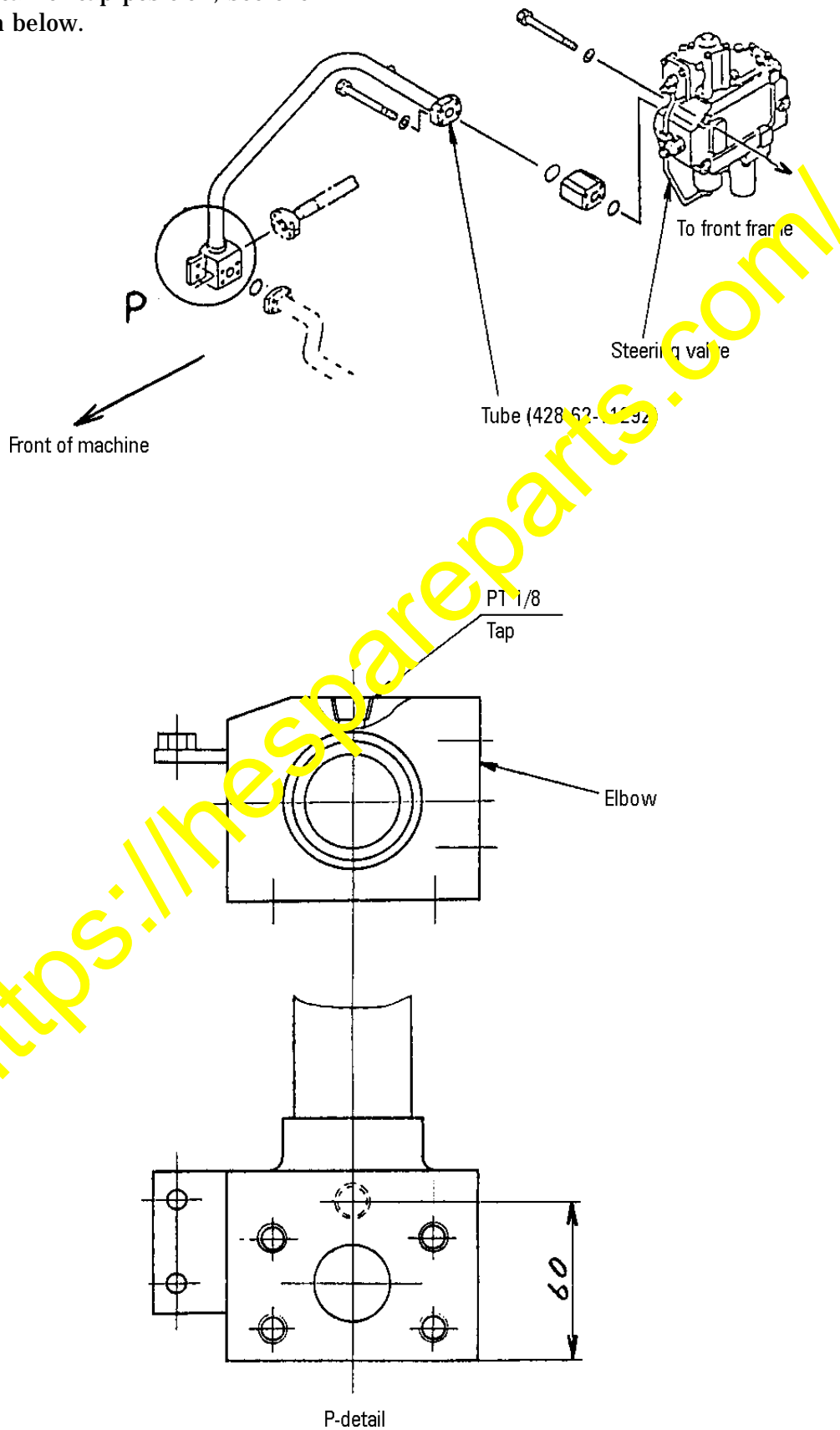
## 3-5. Installing the quick coupler for checking work equipment relief oil pressure

- Fit the coupler to the bucket cylinder line tube.
- Install the step with safeguard cover (428-54-12710) in place of the existing step to provide against breakage of the coupler.



Option ② Reworking Procedure

Rework the tube (428-62-11292) to add a PT 1/8 tap to its elbow (portion P). For detail of tap position, see the illustration below.





### Replacing Right Side Cover

Replace the right side cover as shown in illustration below.

