

PARTS & SERVICE NEWS

REF NO. AA00010

DATE January 19, 2000

(C)

Page 1 of 22

SUBJECT: HYDRAULIC SUCTION LINE CLAMPS

PURPOSE: Introduce new clamps for the hydraulic suction lines

APPLICATION: WA700-1L Wheel Loader Serial Number A20001 thru A20015
 WA700-3L Wheel Loader Serial Number A50001 thru A50003
 WA800-2L Wheel Loader Serial Number A20001 thru A20017
 WA800-2LC Wheel Loader Serial Number A20018 thru A20018
 WA800-3LC Wheel Loader Serial Number A50001 thru A50003
 WA900-1L Wheel Loader Serial Number A20001 thru A20007
 WA900-1LC Wheel Loader Serial Number A20008 thru A20024
 WA900-3LC Wheel Loader Serial Number A50001 thru A50002

FAILURE CODE: 034199

DESCRIPTION: Current worm drive clamps for the hydraulic suction lines used on North American built wheel loaders may not be able to retain the torque necessary to prevent leakage. This Parts and Service News provides for the introduction of "T-bolt" style clamps for use on the hydraulic suction lines to eliminate leakage and retain torque.

PREPARATIONS FOR WORK

IMPORTANT: Please observe all safety and precautionary standards as dictated by the environment and work conditions under which the equipment will be inspected, reworked and repaired. Consult "Shop Manual" WA700-1L and your Komatsu district service manager with any and all questions regarding safety.

1. Park the machine on a flat level surface, lower the boom and bucket to the ground. Shut off the engine and cycle the controls to remove any residual hydraulic pressure from the boom and bucket circuits. Fully apply the parking brake.
2. Place chocks at the front and rear of all wheels to prevent the machine from moving.
3. Place the safety bar on the machine.
4. Remove the key from the start switch and retain it until the repairs are complete. Place a tag on the steering wheel advising: " **This machine is being repaired. It should not be started or moved for any reason until the tag is removed by the person doing the repairs** ".

PARTS LIST

	Remove		Install
WA700-1L Location on vehicle	Current Clamp Part Number	Qty per Vehicle	T-Bolt Clamp P/N
Large Suction Tube (connecting hose from tank elbow to tube)	07281-01589	4	TA0666
Large Suction Tube to Switch Pump (bottom)	07281-01159	4	TA2549
Large Suction Line to Loader Pump (side port)	07281-01159	4	TA2549
Large Suction Line to T/C and POC Pump (bottom)	07281-00609	4	VN5135
	Remove		Install
WA700-3L Location on vehicle	Current Clamp Part Number	Qty per Vehicle	T-Bolt Clamp P/N
Large Suction Tube (connecting hose from tank elbow to tube)	07289-00160	4	TA0666
Large Suction Tube to Switch Pump (bottom)	07289-00105	4	TA2549
Large Suction Line to Loader Pump (side port)	07289-00105	4	TA2549
Large Suction Line to Hydraulic Pump (bottom)	07289-00055	4	VN5135
	Remove		Install
WA800-2LC Location on vehicle	Current Clamp Part Number	Qty per Vehicle	T-Bolt Clamp P/N
Large Suction Tube (connecting hose from tank elbow to tube)	07289-00180	4	WA1071
Large Suction Tube to Switch Pump (side port)	07289-00105	8	TA2549
Large Suction Line to Loader Pump	07289-00105	4	TA2549
Large Suction Line to Steering Pump	07289-00105	4	TA2549
	Remove		Install
WA800-3LC Location on vehicle	Current Clamp Part Number	Qty per Vehicle	T-Bolt Clamp P/N
Large Suction Tube (connecting hose from tank elbow to tube)	07289-00180	4	WA1071
Large Suction Tube to Switch Pump (bottom)	07289-00105	4	TA2549
Large Suction Line to Switch Pump (side port)	07289-00105	8	TA2549
Large Suction Line to Loader Pump	07289-00105	4	TA2549

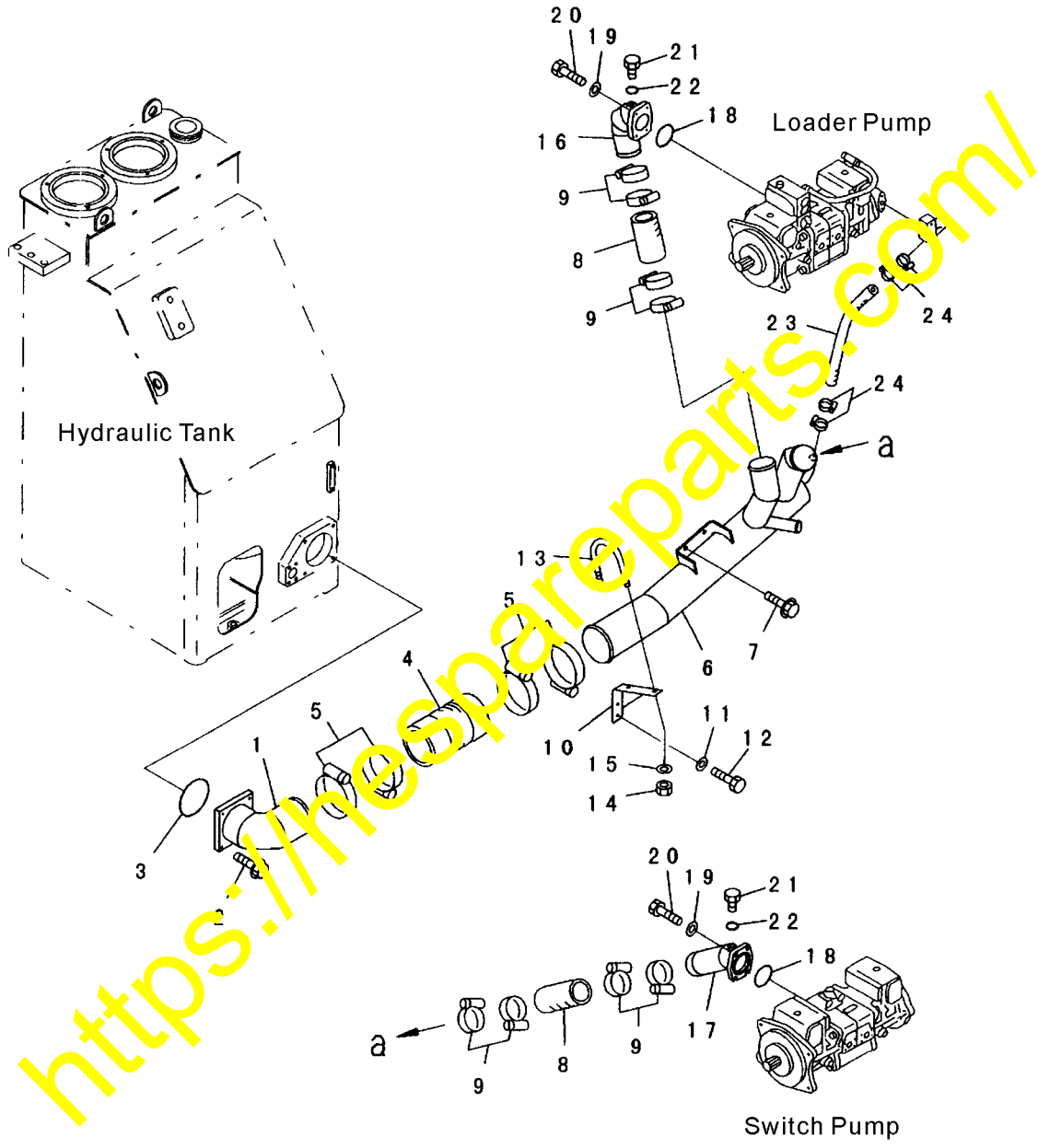
PARTS LIST (continued)

	Remove		Install
WA900-1LC Location on vehicle	Current Clamp Part Number	Qty per Vehicle	T-Bolt Clamp P/N
Large Suction Tube (connecting hose from tank elbow to tube)	07289-00180	4	WA1071
Large Suction Tube to Switch Pump (side port)	07289-00105	8	TA2549
Large Suction Line to Loader Pump	07289-00105	4	TA2549
Large Suction Line to Steering Pump	07289-00105	4	TA2549
	Remove		Install
WA900-3LC Location on vehicle	Current Clamp Part Number	Qty per Vehicle	T-Bolt Clamp P/N
Large Suction Tube (connecting hose from tank elbow to tube)	07289-00180	4	WA1071
Large Suction Tube to Switch Pump (bottom)	07289-00105	4	TA2549
Large Suction Line to Switch Pump (side port)	07289-00105	8	TA2549
Large Suction Line to Loader Pump	07289-00105	4	TA2549

<https://hespareparts.com/>

PARTS LIST (continued)

WA700-3L



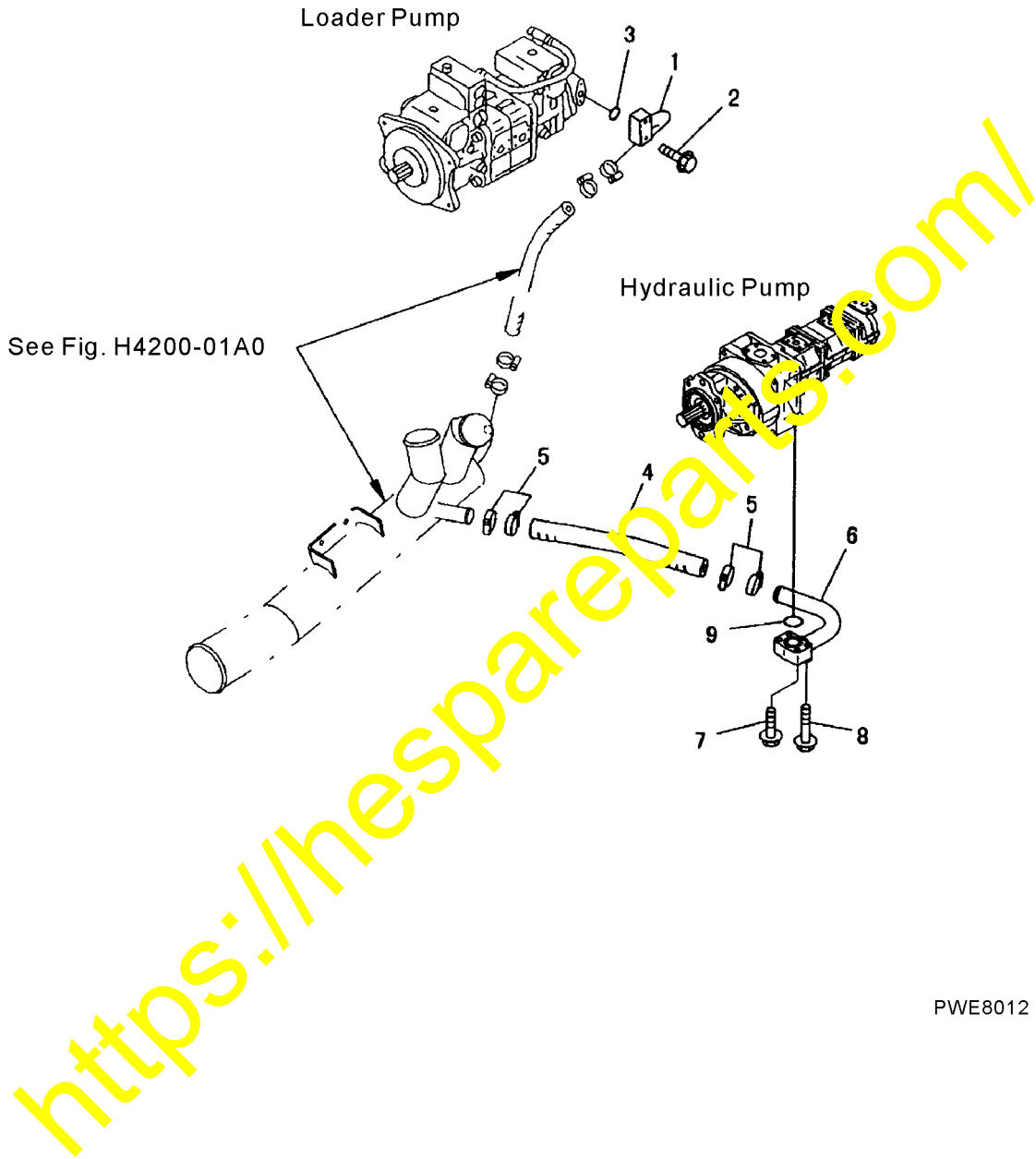
PWE8005

PARTS LIST (continued)**WA700-3L**

Item	Part Number	Description	Qty	Remarks
1	428-62-13791	TUBE	1	
2	01435-01235	BOLT	4	
3	07000-12140	O-RING	1	
4	428-62-13811	HOSE	1	
5	07289-00180	CLAMP	4	New P/N: TA0666
6	428-62-13822	TUBE	1	
7	01435-01225	BOLT	2	
8	07260-08728	HOSE	2	
9	07289-00105	CLAMP	8	New P/N: TA2549
10	428-62-14111	BRACKET	1	
11	01643-31232	WASHER	2	
12	01010-81230	BOLT	2	
13	428-62-14640	CLIP	1	
14	01597-01211	BOLT	2	
15	01643-31232	WASHER	2	
16	428-62-13851	TUBE	1	
17	428-62-13870	TUBE	1	
18	07000-12080	O-RING	2	
19	01643-51232	WASHER	8	
20	07372-21240	BOLT	8	
21	07040-11812	PLUG	2	
22	07002-11823	O-RING	2	
23	07260-02656	HOSE	1	
24	07281-00489	CLAMP	4	

PARTS LIST (continued)

WA700-3L



PWE8012

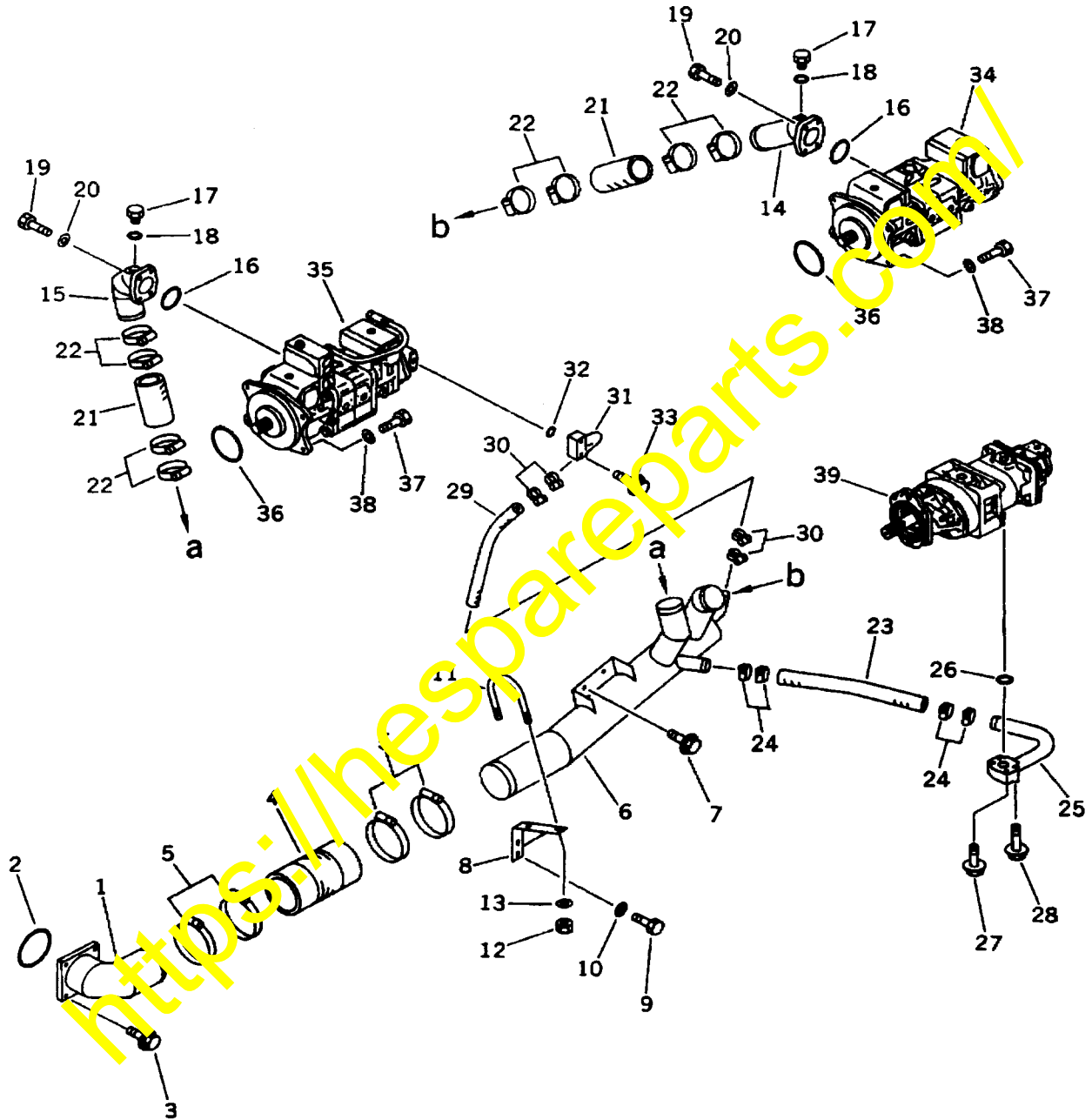
PARTS LIST (continued)**WA700-3L**

Item	Part Number	Description	Qty	Remarks
1	428-62-13940	TUBE	1	
2	01435-01055	BOLT	2	
3	07000-13025	O-RING	1	
4	07260-04150	HOSE	1	
5	07281-00609	CLAMP	4	New P/N: VN5135
6	428-62-13962	TUBE	1	
7	01435-01260	BOLT	2	
8	01435-01270	BOLT	2	
9	07000-13045	O-RING	1	

<https://hespareparts.com/>

PARTS LIST (continued)

WA700-1L



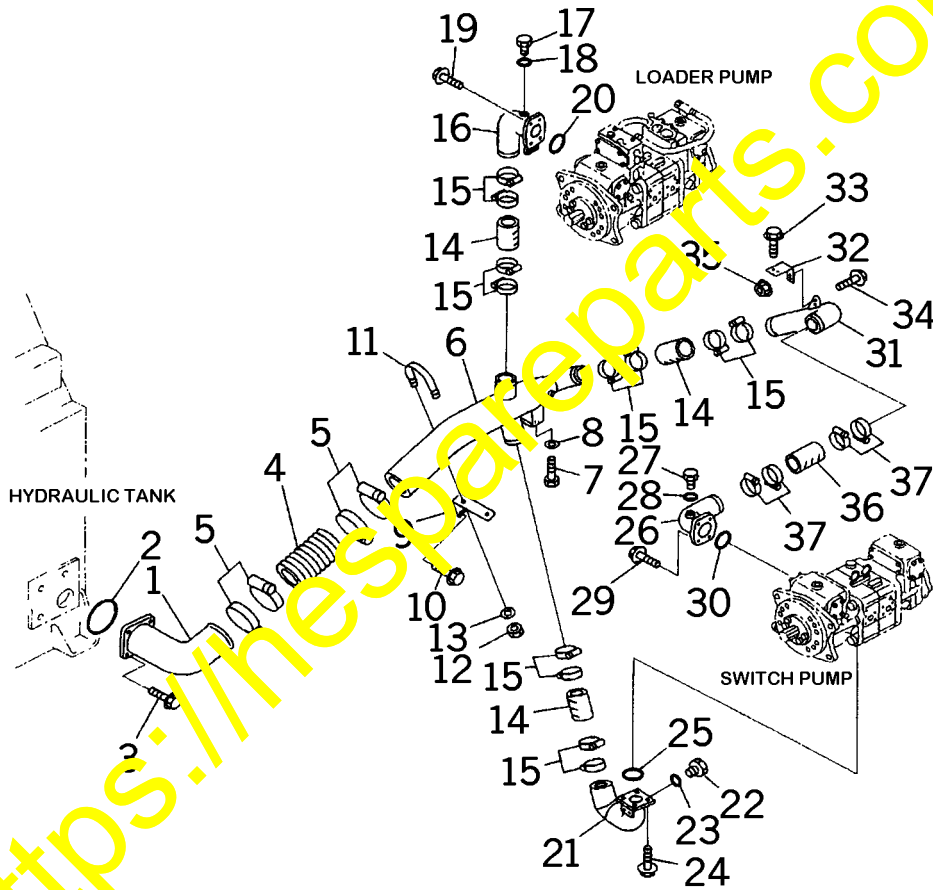
L10AK119

PARTS LIST (continued)**WA700-1L**

Item	Part Number	Description	Qty	Remarks
1	428-62-13791	TUBE	1	
2	07000-12140	O-RING	1	
3	01435-01235	BOLT	4	
4	428-62-13811	HOSE	1	
5	07281-01589	CLAMP	4	New P/N: TA0666
6	428-62-13822	TUBE	1	
7	01435-01225	BOLT	2	
8	428-62-14111	BRACKET	1	
9	01010-81230	BOLT	2	
10	01643-31232	WASHER	2	
11	428-62-14640	CLIP	1	
12	01597-01211	NUT	2	
13	01643-31232	WASHER	2	
14	428-62-13870	TUBE	1	
15	428-62-13851	TUBE	1	
16	07000-12080	O-RING	2	
17	07040-11812	PLUG	2	
18	07002-11823	O-RING	2	
19	07372-21240	BOLT	8	
20	01643-51232	WASHER	8	
21	07260-08728	HOSE	2	
22	07281-01159	CLAMP	8	New P/N: TA2549
23	07260-04150	HOSE	1	
24	07281-00609	CLAMP	4	New P/N: VN5135
25	428-62-1396	TUBE	1	
26	07000-13045	O-RING	1	
27	01435-01260	BOLT	2	
28	01435-01270	BOLT	2	
29	07260-02556	HOSE	1	
30	07281-00481	CLAMP	4	
31	428-62-13940	TUBE	1	
32	07000-13025	O-RING	1	
33	01435-01055	BOLT	2	
34		PUMP ASSEMBLY, SWITCH		
35		PUMP ASSEMBLY, LOADER		
36	07000-F5230	O-RING	2	
37	01010-81650	BOLT	8	
38	01643-31645	WASHER	8	
39		PUMP ASS'Y, TORQUE CONVERTER and P.O.C.		

PARTS LIST (continued)

WA800-3LC



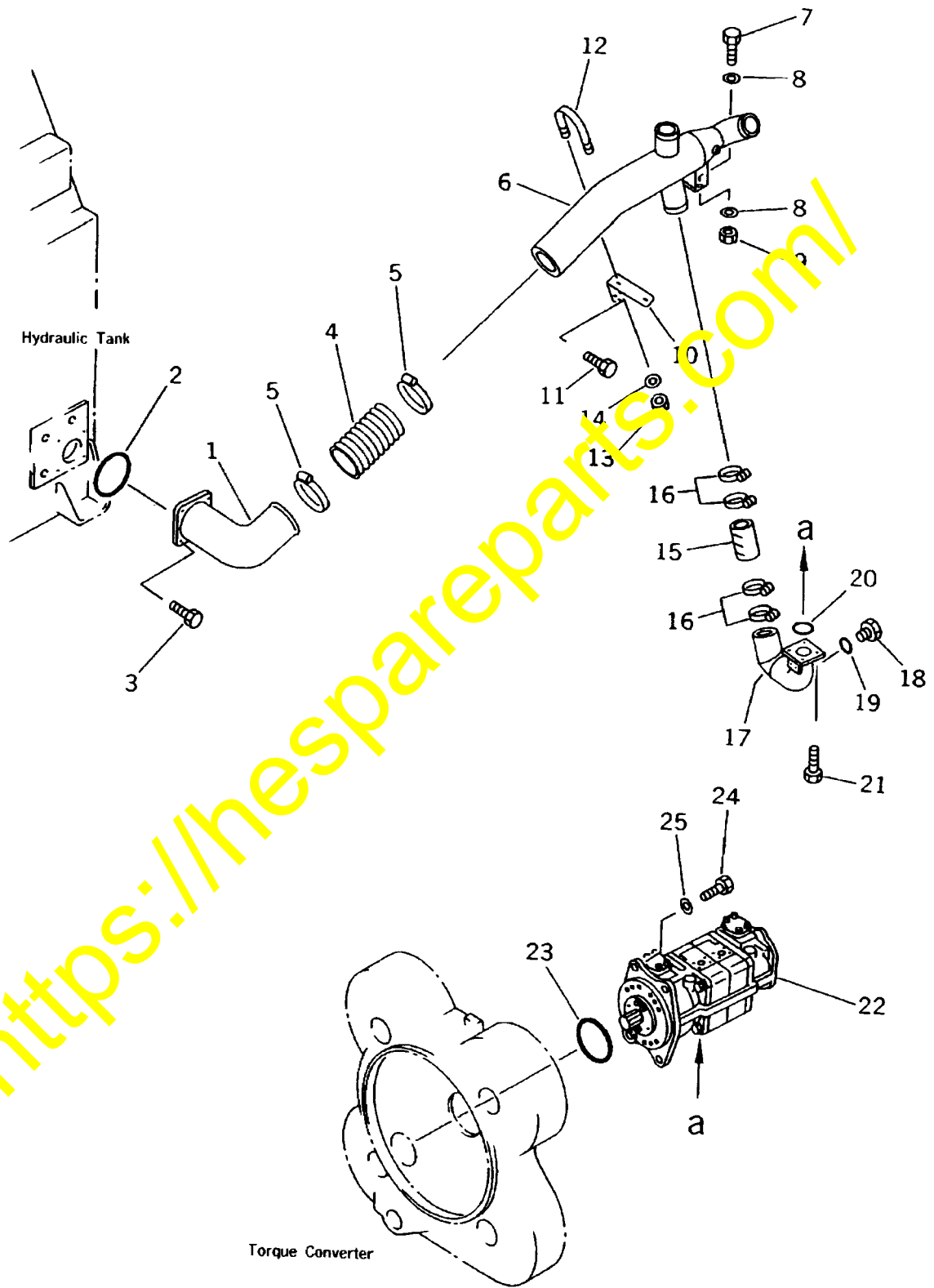
VLPB0812

PARTS LIST (continued)
WA800-3LC

Item	Part Number	Description	Qty	Remarks
1	427-62-14312	TUBE	1	
2	07000-F5155	O-RING	1	
3	01435-01240	BOLT	4	
4	427-62-15280	HOSE	1	
5	07289-00180	CLAMP	4	New P/N: WA1071
6	427-62-14484	TUBE	1	
7	01010-81235	BOLT	2	
8	01643-31232	WASHER	2	
9	427-62-14421	BRACKET	1	
10	01435-01225	BOLT	2	
11	21T-62-21990	CLIP	1	
12	01597-01211	NUT	2	
13	124-54-26540	WASHER	2	
14	07260-28718	HOSE	3	
15	07289-00105	CLAMP	12	New P/N: TA2549
16	427-62-14160	TUBE	1	
17	07040-11812	PLUG	1	
18	07002-21823	O-RING	1	
19	01435-01235	BOLT	4	
20	07000-F2080	O-RING	1	
21	427-62-15511	TUBE	1	
22	07040-11812	PLUG	1	
23	07002-21823	O-RING	1	
24	01435-01235	BOLT	4	
25	07000-F2080	O-RING	1	
26	427-62-14190	TUBE	1	
27	07040-11812	PLUG	1	
28	07002-21823	O-RING	1	
29	01435-01235	BOLT	4	
30	07000-F2080	O-RING	1	
31	427-62-14460	TUBE	1	
32	427-62-14230	BRACKET	1	
33	01435-01225	BOLT	2	
34	01435-01230	BOLT	2	
35	01584-01210	NUT	2	
36	07260-28718	HOSE	1	
37	07289-00105	CLAMP	4	New P/N: TA2549

PARTS LIST (continued)

WA800-2LC



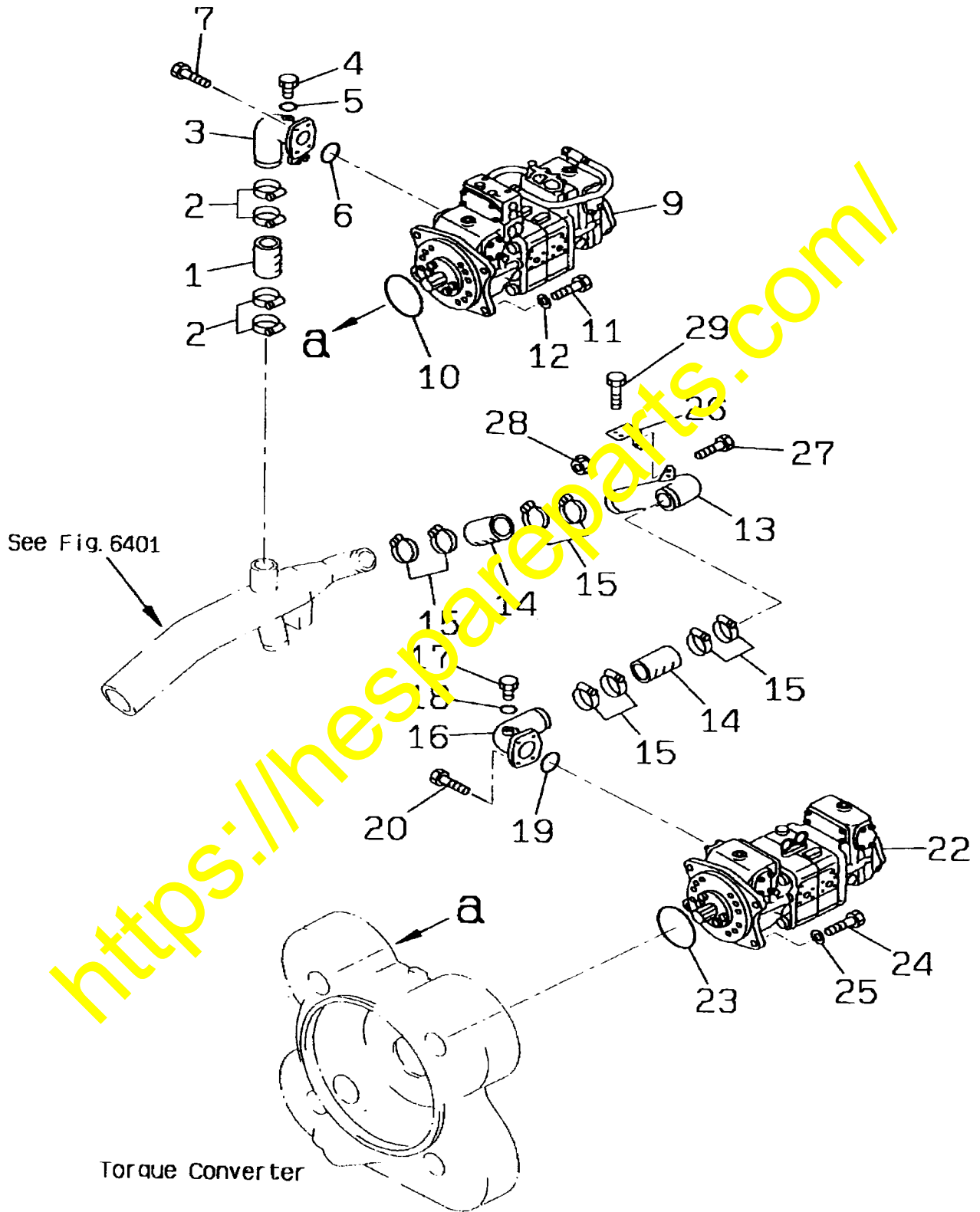
L10AD118

PARTS LIST (continued)**WA800-2LC**

Item	Part Number	Description	Qty	Remarks
1	427-62-14312	TUBE	1	
2	07000-F5155	O-RING	1	
3	01435-01240	BOLT	4	
4	427-62-15280	HOSE	1	
5	07289-00180	CLAMP	4	New P/N: WA1071
6	427-62-14484	TUBE	1	
7	01010-81235	BOLT	2	
8	01643-31232	WASHER	2	
9	01580-11210	NUT	2	
10	427-62-14421	BRACKET	1	
11	01435-01225	BOLT	2	
12	21T-62-21990	CLIP	1	
13	01597-01211	NUT	2	
14	124-54-26540	WASHER	2	
15	07260-28718	HOSE	1	
16	07289-00105	CLAMP	4	New P/N: TA2549
17	427-62-15510	TUBE	1	
18	07040-11812	PLUG	1	
19	07002-21823	O-RING	1	
20	07000-F2080	O-RING	1	
21	01435-01235	BOLT	4	
22		PUMP ASSEMBLY, STEERING		
23	07000-F2080	O-RING	1	
24	01010-81650	BOLT	4	
25	01643-31645	WASHER	4	

PARTS LIST (continued)

WA800-2LC



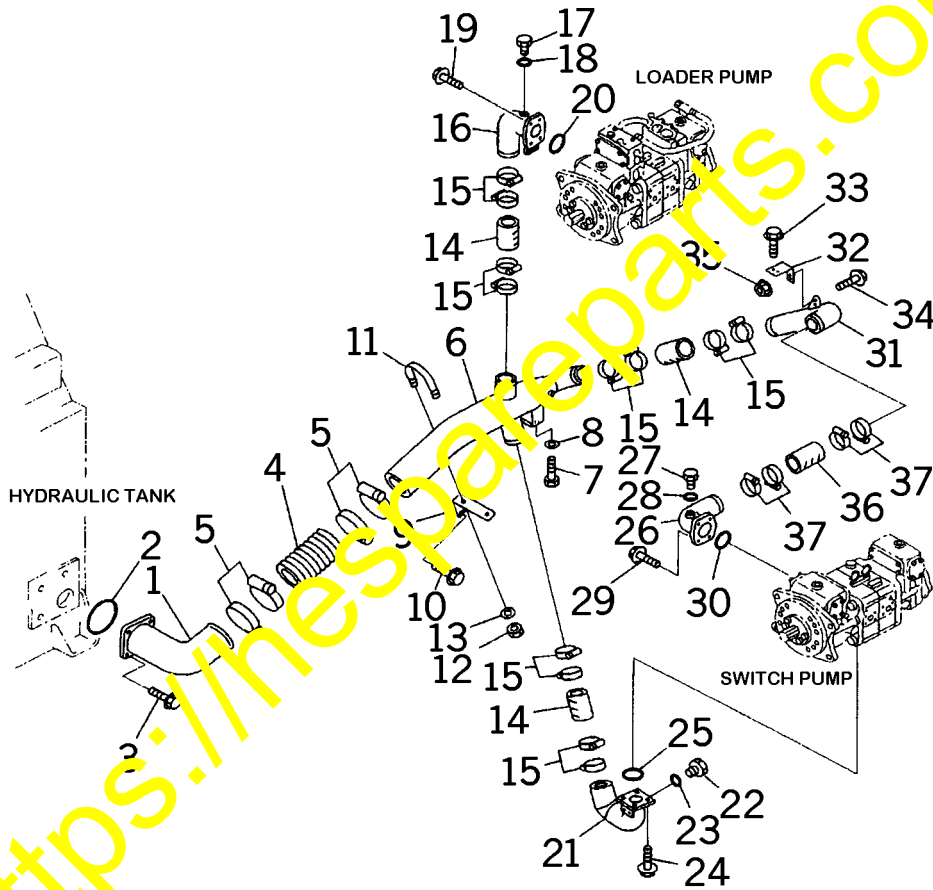
L10AD119

PARTS LIST (continued)**WA800-2LC**

Item	Part Number	Description	Qty	Remarks
1	07260-28718	HOSE	1	
2	07281-01159	CLAMP / 07289-00105	4	New P/N: TA2549
3	427-62-14160	TUBE	1	
4	07040-11812	PLUG	1	
5	07002-21823	O-RING	1	
6	07000-F2080	O-RING	1	
7	01435-01235	BOLT	4	
9		PUMP ASSEMBLY, LOADER		
10	07000-F5230	O-RING	1	
11	01010-81650	BOLT	4	
12	01643-31645	WASHER	4	
13	427-62-14460	TUBE	1	
14	07260-28718	HOSE	2	
15	07281-01159	CLAMP / 07289-00105	8	New P/N: TA2549
16	427-62-14190	TUBE	1	
17	07040-11812	PLUG	1	
18	07002-21823	O-RING	1	
19	07000-F2080	O-RING	1	
20	01435-01235	BOLT	4	
22		PUMP ASSEMBLY, SWITCH		
23	07000-F2080	O-RING	1	
24	01010-81650	BOLT	4	
25	01643-31645	WASHER	4	
26	427-62-14230	BRACKET	1	
27	01435-01230	BOLT	2	
28	01584-01210	NUT	2	
29	01435-01225	BOLT	2	

PARTS LIST (continued)

WA900-3LC



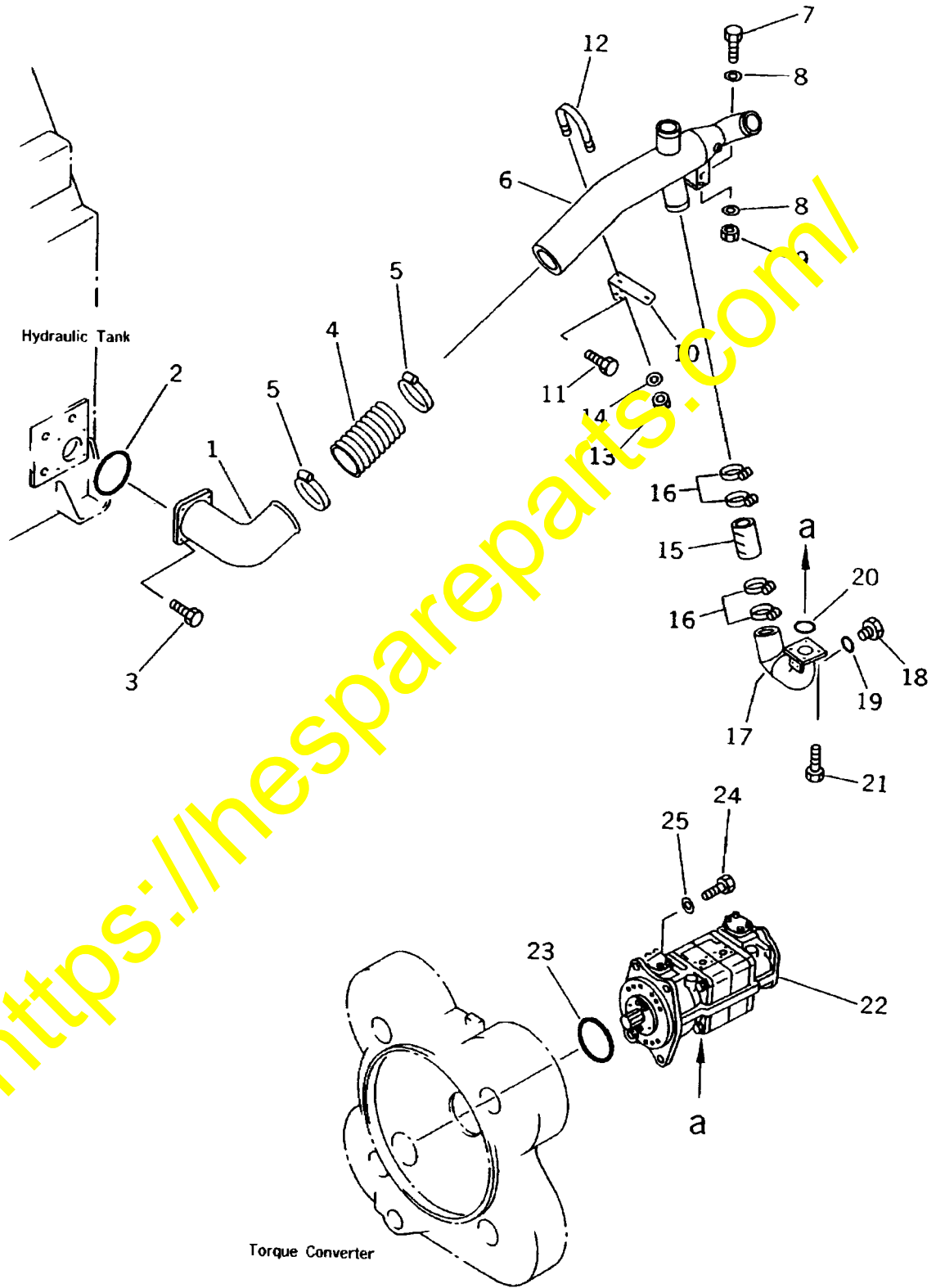
VLPB0812

PARTS LIST (continued)**WA900-3LC**

Item	Part Number	Description	Qty	Remarks
1	427-62-14312	TUBE	1	
2	07000-F5155	O-RING	1	
3	01435-01240	BOLT	4	
4	427-62-15280	HOSE	1	
5	07289-00180	CLAMP	4	New P/N: WA1071
6	427-62-14484	TUBE	1	
7	01010-81235	BOLT	2	
8	01643-31232	WASHER	2	
9	427-62-14421	BRACKET	1	
10	01435-01225	BOLT	2	
11	21T-62-21990	CLIP	1	
12	01597-01211	NUT	2	
13	124-54-26540	WASHER	2	
14	07260-28718	HOSE	3	
15	07289-00105	CLAMP	12	New P/N: TA2549
16	427-62-14160	TUBE	1	
17	07040-11812	PLUG	1	
18	07002-21823	O-RING	1	
19	01435-01235	BOLT	4	
20	07000-F2080	O-RING	1	
21	427-62-15511	TUBE	1	
22	07040-11812	PLUG	1	
23	07002-21823	O-RING	1	
24	01435-01235	BOLT	4	
25	07000-F2080	O-RING	1	
26	427-62-14190	TUBE	1	
27	07040-11812	PLUG	1	
28	07002-21823	O-RING	1	
29	01435-01235	BOLT	4	
30	07000-F2080	O-RING	1	
31	427-62-14460	TUBE	1	
32	427-62-14230	BRACKET	1	
33	01435-01225	BOLT	2	
34	01435-01230	BOLT	2	
35	01584-01210	NUT	2	
36	07260-28718	HOSE	1	
37	07289-00105	CLAMP	4	New P/N: TA2549

PARTS LIST (continued)

WA900-1LC



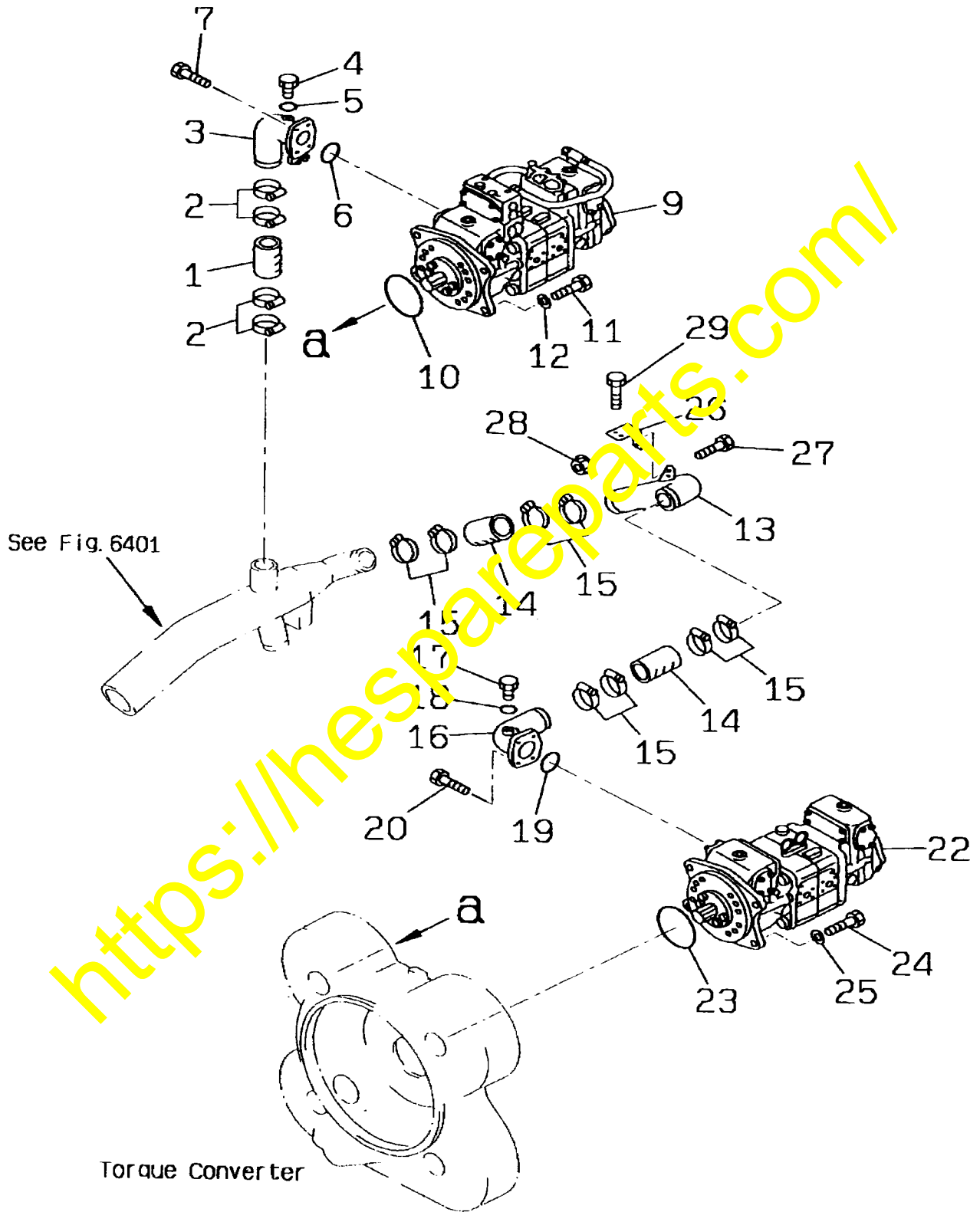
L10AD118

PARTS LIST (continued)**WA900-1LC**

Item	Part Number	Description	Qty	Remarks
1	427-62-14312	TUBE	1	
2	07000-F5155	O-RING	1	
3	01435-01240	BOLT	4	
4	427-62-15280	HOSE	1	
5	07289-00180	CLAMP	4	New P/N: WA1071
6	427-62-14484	TUBE	1	
7	01010-81235	BOLT	2	
8	01643-31232	WASHER	2	
9	01580-11210	NUT	2	
10	427-62-14421	BRACKET	1	
11	01435-01225	BOLT	2	
12	21T-62-21990	CLIP	1	
13	01597-01211	NUT	2	
14	124-54-26540	WASHER	2	
15	07260-28718	HOSE	1	
16	07289-00105	CLAMP	4	New P/N: TA2549
17	427-62-15510	TUBE	1	
18	07040-11812	PLUG	1	
19	07002-21823	O-RING	1	
20	07000-F2080	O-RING	1	
21	01435-01235	BOLT	4	
22		PUMP ASSEMBLY, STEERING		
23	07000-F2080	O-RING	1	
24	01010-81650	BOLT	4	
25	01643-31645	WASHER	4	

PARTS LIST (continued)

WA900-1LC



L10AD119

PARTS LIST (continued)**WA900-1LC**

Item	Part Number	Description	Qty	Remarks
1	07260-28718	HOSE	1	
2	07281-01159	CLAMP / 07289-00105	4	New P/N: TA2549
3	427-62-14160	TUBE	1	
4	07040-11812	PLUG	1	
5	07002-21823	O-RING	1	
6	07000-F2080	O-RING	1	
7	01435-01235	BOLT	4	
9		PUMP ASSEMBLY, LOADER		
10	07000-F5230	O-RING	1	
11	01010-81650	BOLT	4	
12	01643-31645	WASHER	4	
13	427-62-14460	TUBE	1	
14	07260-28718	HOSE	2	
15	07281-01159	CLAMP / 07289-00105	8	New P/N: TA2549
16	427-62-14190	TUBE	1	
17	07040-11812	PLUG	1	
18	07002-21823	O-RING	1	
19	07000-F2080	O-RING	1	
20	01435-01235	BOLT	4	
22		PUMP ASSEMBLY, SWITCH		
23	07000-F2080	O-RING	1	
24	01010-81650	BOLT	4	
25	01643-31645	WASHER	4	
26	427-62-14230	BRACKET	1	
27	01435-01230	BOLT	2	
28	01584-01210	NUT	2	
29	01435-01225	BOLT	2	

CLAMP REPLACEMENT INSTRUCTIONS

NOTE: To keep the hydraulic circuits clean and protect the components from damage, observe the following points when disassembling and assembling.

- ★ Prior to starting work, wash machine, paying particular attention to the area to be disassembled.
- ★ Do not let dirt or debris get in the hydraulic circuits when disassembling and assembling.
- ★ After parts have been removed, thoroughly flush parts. Then cover openings to prevent dirt and debris from contaminating parts.

1. Remove transmission inspection cover.
2. Referencing the parts section of this PSN, determine clamps to be replaced for your machine, then remove old clamps and install new clamps. Tighten clamps to 25 to 75 INCH lbs.
3. If clamps cannot be replaced without removing hose, replace clamps as follows:
 - a. Slowly loosen oil filler cap to release pressure from inside of hydraulic tank. Then operate steering wheel and controls several times to release any remaining pressure. Then drain oil from tank.
 - b. Loosen clamps and remove hose. Clean parts removed from machine.
 - c. Perform a cleanliness check, then reinstall hose using new clamps. Tighten clamps to 25 to 75 INCH lbs.
 - d. Referencing the appropriate Shop Manual for your machine, determine hydraulic oil tank quantity, then tighten all plugs and fill the tank with oil.
 - e. Bleed the system of air (see Shop Manual) and then recheck oil level and add oil as required.
4. Reinstall transmission inspection cover.