

PARTS & SERVICE NEWS

REF NO. AA00029

DATE February 8, 2000

(C)

Page 1 of 4

SUBJECT: REPAIR OF PRESSURE SWITCH FOR THE ELECTRONIC CONTROLLED SUSPENSION SYSTEM (ECSS) ACCUMULATOR

PURPOSE: To introduce modification procedures to repair broken pressure switch for the ECSS accumulator.

APPLICATION: WA500-3 Wheel Loaders, Serial Number 50001 thru 50703
WA500-3L Wheel Loaders, Serial Number A70001 thru A70642
WA600-3 Wheel Loaders, Serial Number 50001 thru 50174
WA600-3L Wheel Loaders, Serial Number A52001 thru A52104

FAILURE CODE: DHS238

DESCRIPTION:

PREPARATIONS FOR WORK:

IMPORTANT - Please observe all safety and precautionary standards as dictated by the environment and work conditions under which the equipment will be inspected, reworked and repaired. Consult "Shop Manual" WA500-3/3L or WA600-3/3L and your Komatsu district service manager with any and all questions regarding safety.

1. Park the machine on a flat level surface, lower the boom and bucket to the ground. Shut off the engine and cycle the controls to remove any residual hydraulic pressure from the boom and bucket circuits. Fully apply the parking brake.
2. Place chocks at the front and rear of all wheels to prevent the machine from moving.
3. Place the safety bar on the machine.
4. Remove the key from the start switch and retain it until the repairs are complete. Place a tag on the steering wheel advising: " **This machine is being repaired. It should not be started or moved for any reason until the tag is removed by the person doing the repairs** ".

INTRODUCTION:

When the pressure switch for the ECSS accumulator on the WA500-3/3L and WA600-3/3L wheel loaders have been found broken, replace it with the improved part following the modification procedures outlined in this **PARTS & SERVICE NEWS**.

PARTS LIST:

Index	Part Number	Description	Qty.	Remarks
1	425-S99-2281 (425-S99-2280)	Switch, Pressure	1	When Replacing Switch, Replace O-Ring
2	07002-11423	O-ring	1	

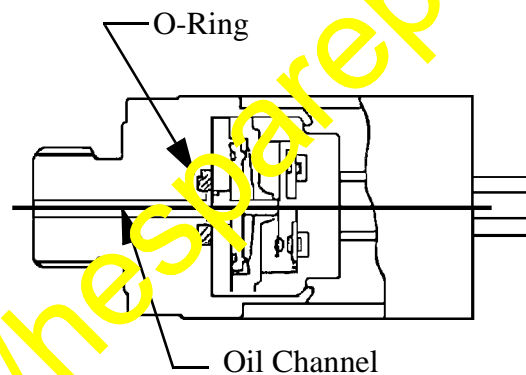
CONTENTS OF MODIFICATION:

Fig. 1 Pressure Switch

The pressure switch is to be replaced with an improved part with the increased proof pressure (with reduced pressure receiving load).

The material of the o-ring has been changed: Silicon (Hs70) > NBR (Hs90)
 The size of the o-ring has been changed: Inner diameter 10.8 > 6.8
 The diameter of the channel has been changed: Inner diameter 2.5 > 2.0

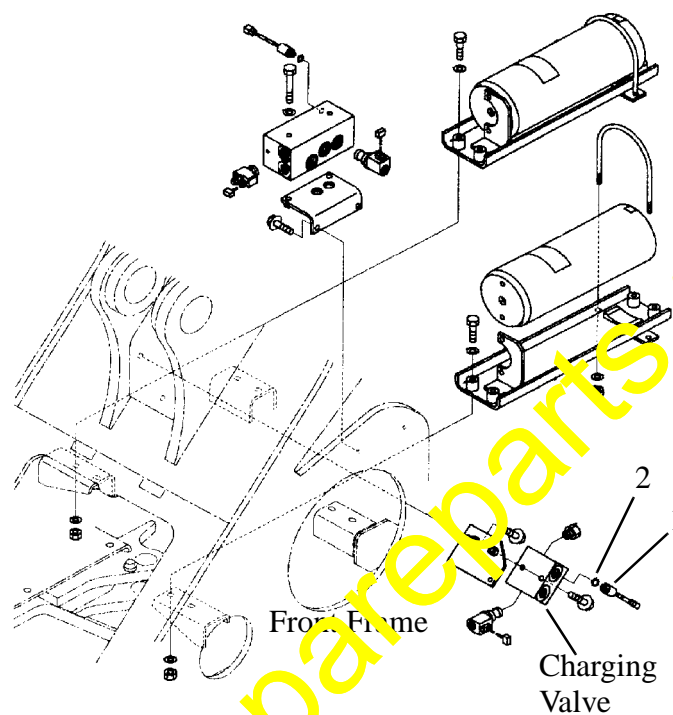
MODIFICATION PROCEDURE:

Fig. 2 WA500-5 ECSS Accumulator

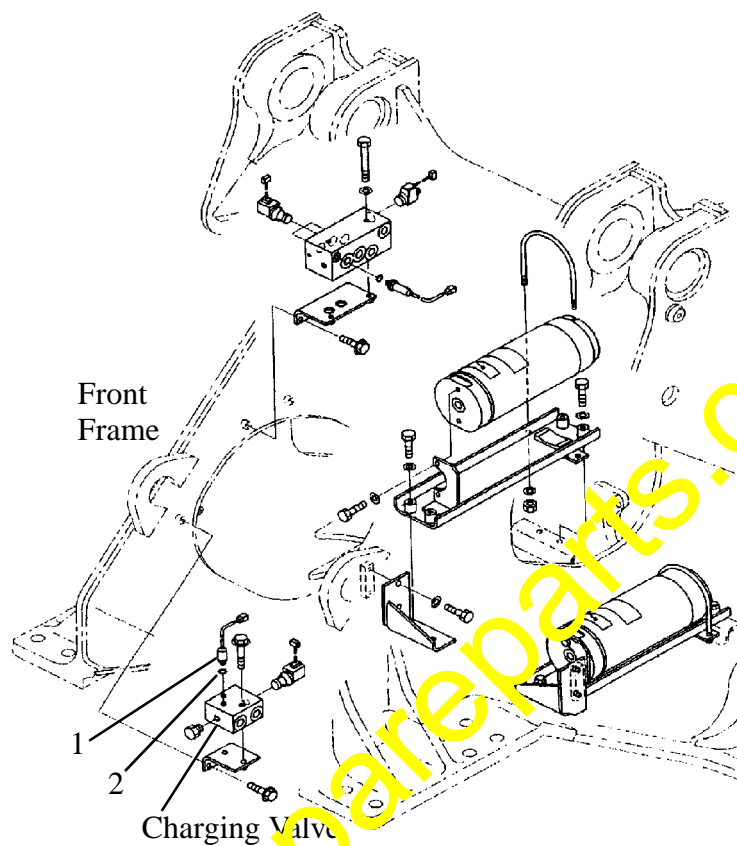


Fig. 3 WA600-3 ECSS Accumulator

Referencing Fig. 2 & Fig. 3:

Replace the pressure switch for the ECSS accumulator with the improved part.

Tightening torque: 19.6 - 24.5 N-m (14.5 - 18.1 ft. lb.)