

# PARTS & SERVICE NEWS

REF NO. AA01056B

DATE January 9, 2002

(C)

Page 1 of 10

*This Parts & Service News supercedes the previous issuance, AA01056A, dated July 31, 2001. AA01056A should be discarded.*

- SUBJECT:** MOUNTING HARDWARE CHANGE FOR HOOD PANEL, LOW SIDE DOORS AND RADIATOR GUARD
- PURPOSE:** To provide better stability to sheet metal that has cracked due to inadequate clamping loads (hood panels and low side doors) and inadequate tension ratios (radiator guard).
- APPLICATION:** Komatsu Wheel Loaders  
WA800-3LC: A50001 and UP  
WA900-3LC: A50001 and UP
- FAILURE CODE:** 5400HA
- DESCRIPTION:** Mounting hardware change for hood panel, low side doors and radiator guard.

A mounting hardware change for the hood panel, low side doors and radiator guard is needed to address a sheet metal cracking problem.

During machine operation, the clamp load of the current washer head bolts does not provide the adequate clamp force needed to give stability to the panels. The inadequate clamp force allows vibrations to loosen the bolts and crack the panels at the mounting areas. In order to provide adequate clamp force, washer head bolts (01435-010XX and 01435-012XX) need to be replaced with the new hardware listed in Table 1. Refer to Figures 1-6 for locations of washer head bolts that are to be replaced.

In addition, radiator guard mounting bolts have been loosened or broken due to inadequate tension ratio. The inadequate tension ratio created abnormal vibrations which have caused sheet metal to crack. In order to provide adequate tension ratio, the radiator guard mounting bolts need to be replaced with longer bolts. Additional spacers will also need to be added, refer to Figures 7-9.

**Table 1. Bolt, Washer, and Spacer Locations**

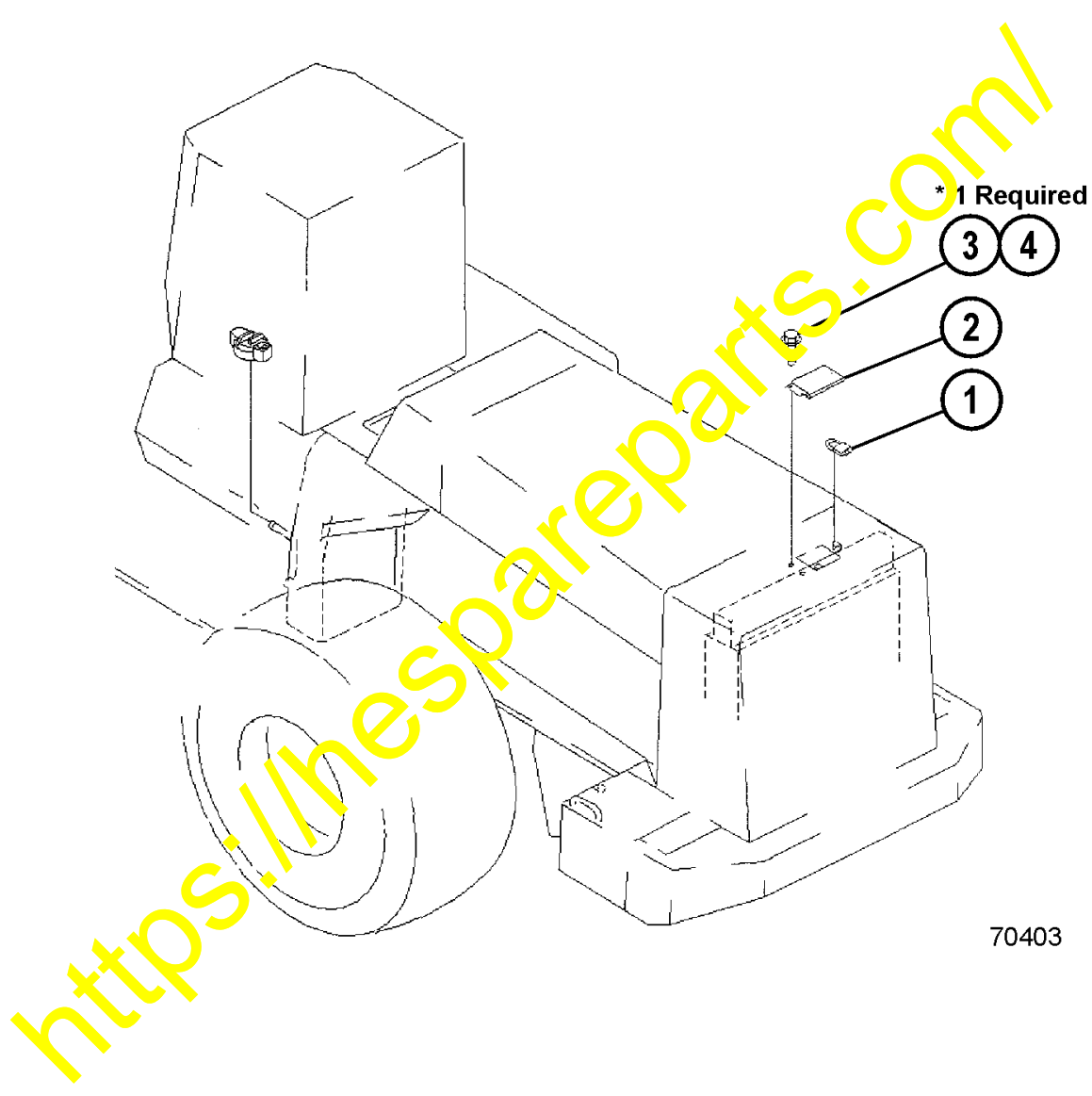
Part Number	Description	Tightening Torque / Remarks	Quantity
01643-31032	Washer		6
01010-81025	Bolt	59-74 Nm (6~7.5 Kgm / 4~5 lb/ft.)	6
01010-81225	Bolt	98-123 Nm (10~12.5 Kgm / 6.7~8.4 lb/ft.)	24
01643-31232	Washer		86
01010-81230	Bolt	98-123 Nm (10~12.5 Kgm / 6.7~8.4 lb/ft.)	54
01010-81235	Bolt	98-123 Nm (10~12.5 Kgm / 6.7~8.4 lb/ft.)	8
01010-81685	Bolt	230-309 Nm (23.5~31.5 Kgm / 170~228 lb/ft.) For Radiator Guard Mounting.	10
01643-51645	Washer	For Radiator Guard Mounting.	10
427-54-A1410	Block	For Radiator Guard Mounting. Refer to Figure 8.	2
427-54-A1420	Block	For Radiator Guard Mounting. Refer to Figure 9.	2

**PREPARATION:**

 **IMPORTANT** 

*Observe all safety and precautionary standards as dictated by the environment and work conditions under which the equipment will be inspected, reworked and repaired. Consult the "Shop Manual" or your Komatsu district service manager with any questions regarding safety.*

1. Park the machine on a flat, level surface. Lower the boom and the bucket to the ground. Shut off the engine. After stopping the engine, operate bucket control lever several times to the "RAISE" and "LOWER" positions in order to release the remaining pressure in the hydraulic circuit. Set the safety lock to the "LOCK" position.
2. Turn parking brake switch to the "ON" position to apply the brake. Place chocks at the front and the rear of all wheels in order to prevent the machine from moving.
3. Lock the front and rear frames with the safety bar.
4. Remove the ignition key from the start switch and retain it until the repairs have been completed. Attach a tag on the steering wheel advising: "This machine is being repaired. It should not be started or moved for any reason until the tag is removed by the person doing the work".
5. Welding operations must always be carried out by a qualified welder and in a place equipped with proper equipment. Gas is generated and there is danger of fire or electrocution when carrying out welding. Do never allow any unqualified personnel to carry out welding operations. The qualified welder must follow the precautions given below.
  - Disconnect the battery terminals to prevent explosion of the battery.
  - Remove the paint from the place being welded to prevent gas from being generated.
  - If hydraulic equipment, piping or adjacent areas are heated, flammable vapor or spray may be generated and there is a danger of this catching fire. Avoid applying heat to such places.
  - If heat is applied directly to rubber hoses or piping under pressure, they may suddenly burst, so cover them with fireproof sheeting.
  - Always wear protective clothing.
  - Ensure that there is good ventilation.
  - Clean up any flammable materials before welding and make sure that there is a fire extinguisher in good working order nearby.



70403

FIGURE 1. VANDALISM PROTECTION

- 1. Lock
- 2. Cover
- 3. Bolt (01010-81225)
- 4. Washer (01643-31232)

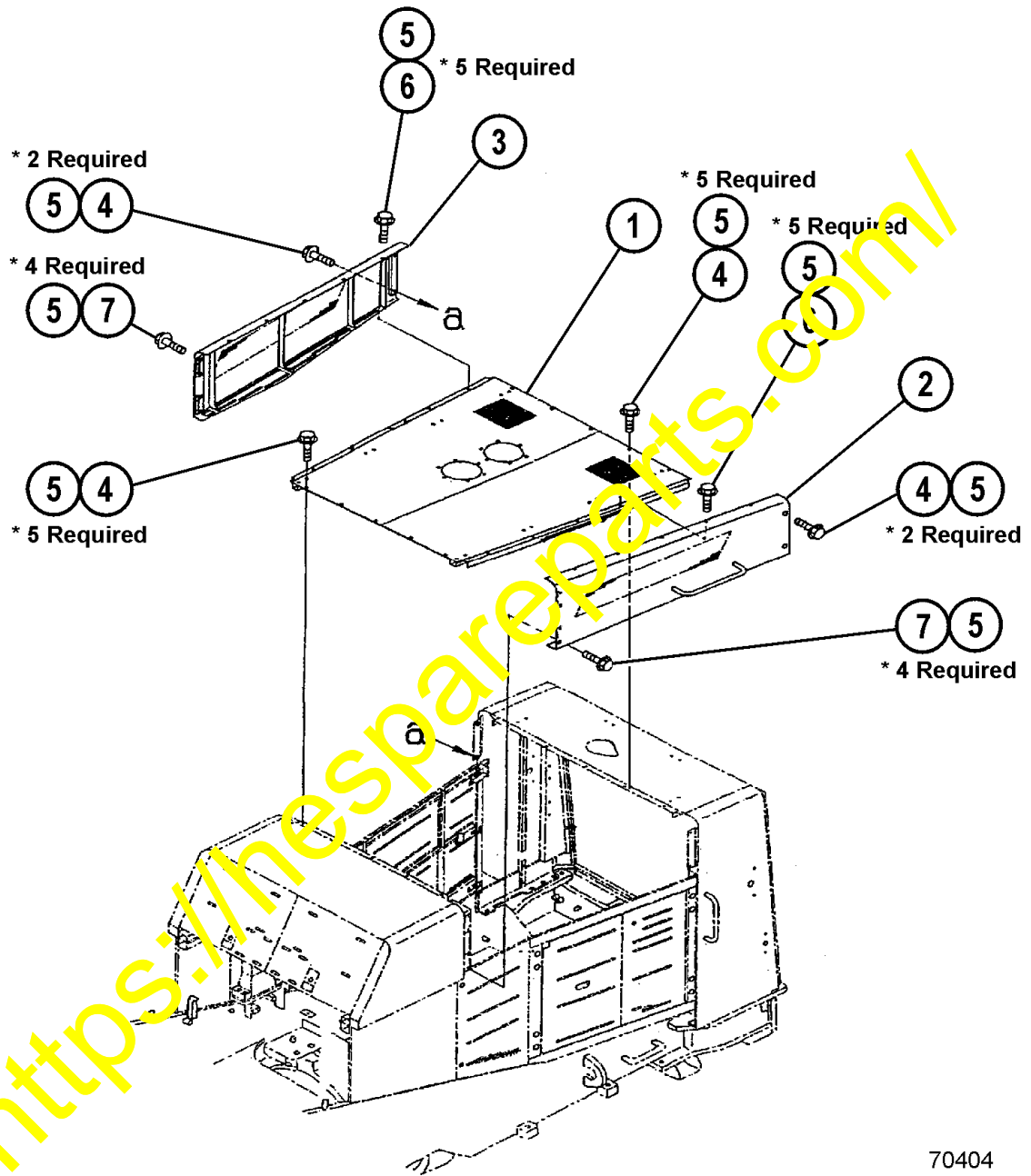


FIGURE 2. TOP HOOD AND UPPER SIDE COVER

- |                       |                         |
|-----------------------|-------------------------|
| 1. Hood, Top          | 5. Washer (01643-31232) |
| 2. Hood, Left Side    | 6. Bolt (01010-81225)   |
| 3. Hood, Right Side   | 7. Bolt (01010-81235)   |
| 4. Bolt (01010-81230) |                         |

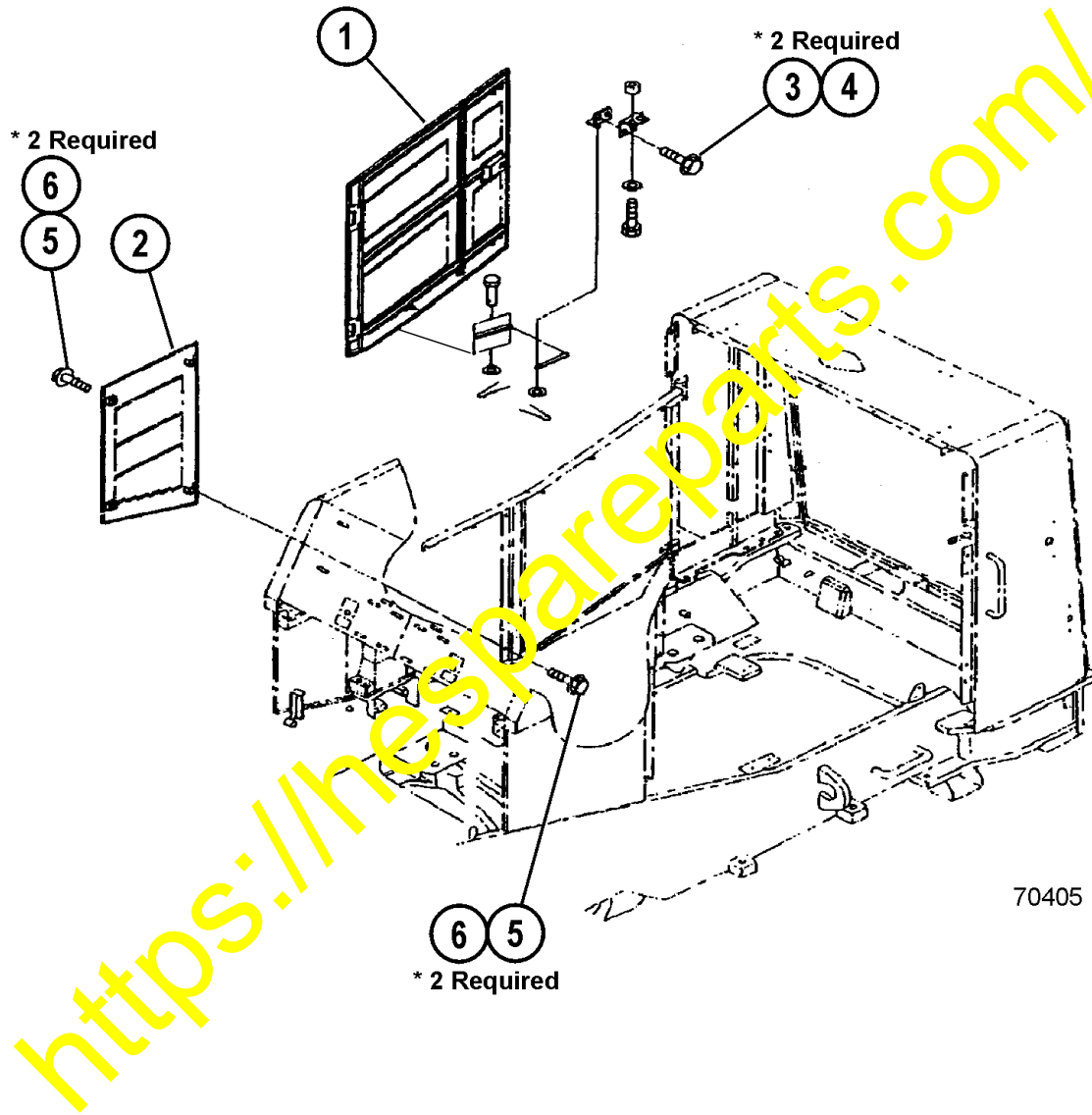


FIGURE 3. RIGHT SIDE DOOR AND COVER

- |                       |                         |
|-----------------------|-------------------------|
| 1. Door               | 4. Washer (01643-31032) |
| 2. Cover, Right       | 5. Bolt (01010-81225)   |
| 3. Bolt (01010-81025) | 6. Washer (01643-31232) |

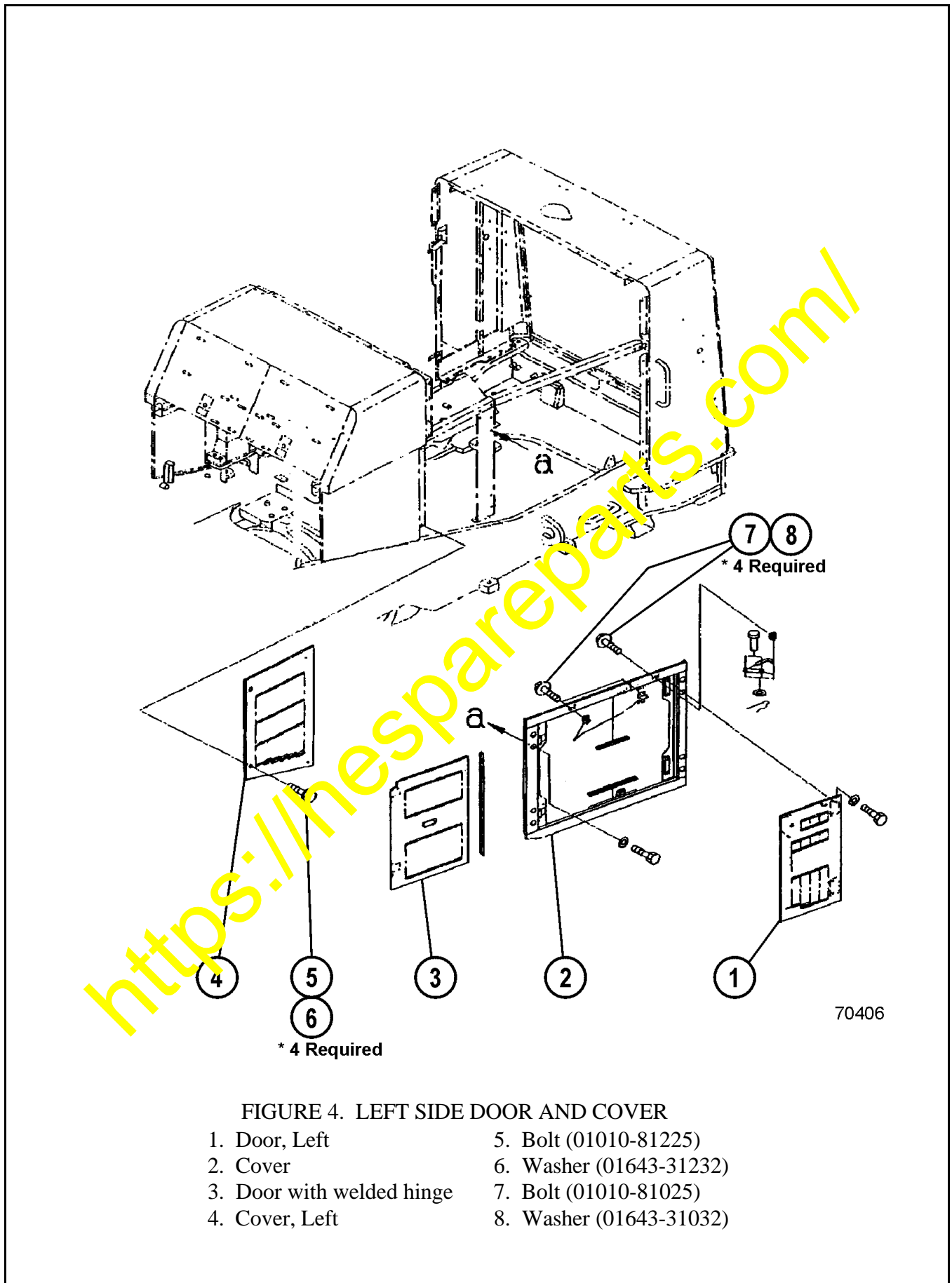
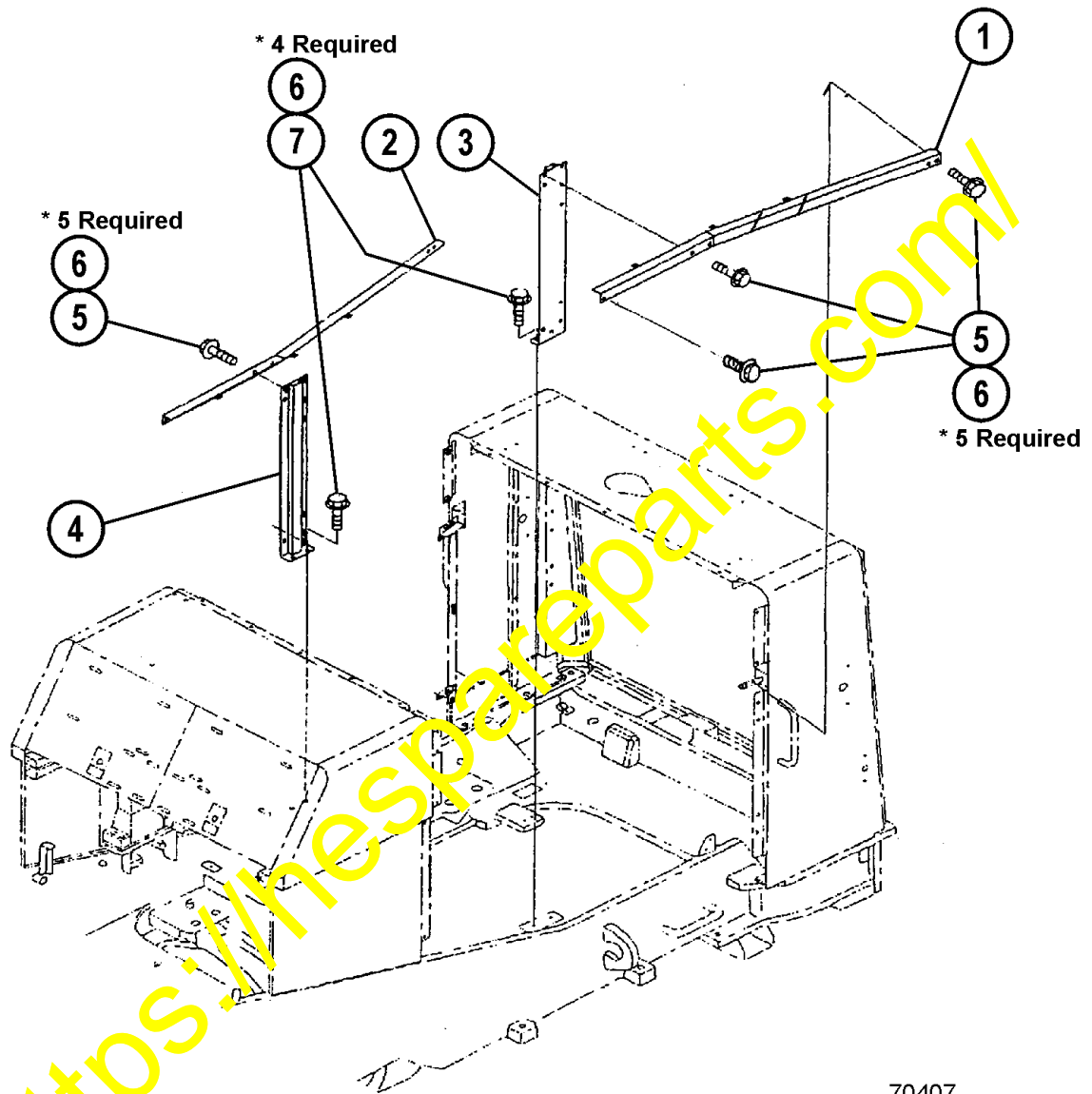


FIGURE 4. LEFT SIDE DOOR AND COVER

- |                           |                         |
|---------------------------|-------------------------|
| 1. Door, Left             | 5. Bolt (01010-81225)   |
| 2. Cover                  | 6. Washer (01643-31232) |
| 3. Door with welded hinge | 7. Bolt (01010-81025)   |
| 4. Cover, Left            | 8. Washer (01643-31032) |



70407

FIGURE 5. HOOD SUPPORT

- |                              |                         |
|------------------------------|-------------------------|
| 1. Bracket, Left Horizontal  | 5. Bolt (01010-81230)   |
| 2. Bracket, Right Horizontal | 6. Washer (01643-31232) |
| 3. Bracket, Left Vertical    | 7. Bolt (01010-81225)   |
| 4. Bracket, Right Vertical   |                         |

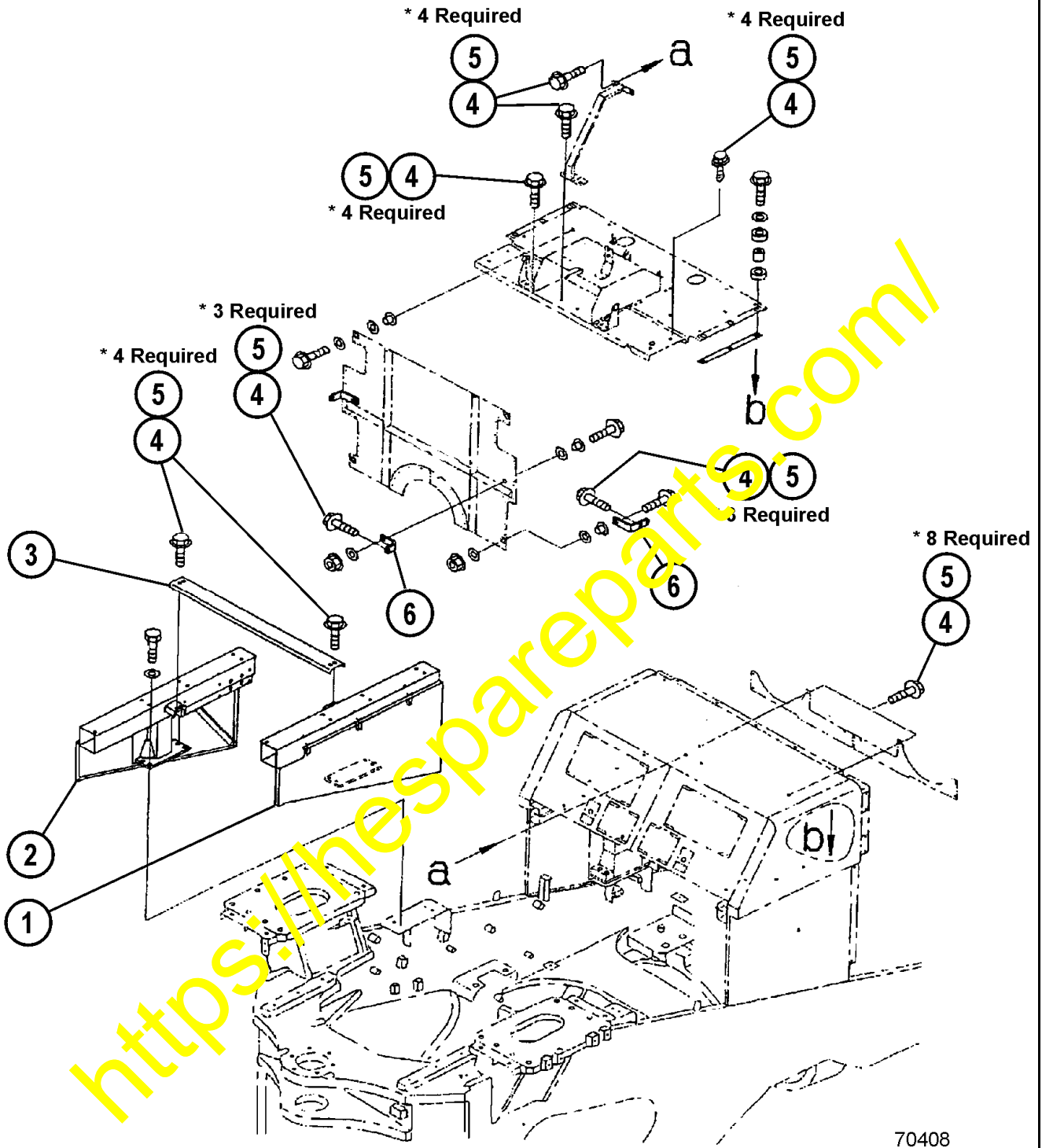


FIGURE 6. BULKHEAD

- |                 |                         |
|-----------------|-------------------------|
| 1. Cover, Left  | 4. Bolt (01010-81230)   |
| 2. Cover, Right | 5. Washer (01643-31232) |
| 3. Plate        | 6. Bracket              |



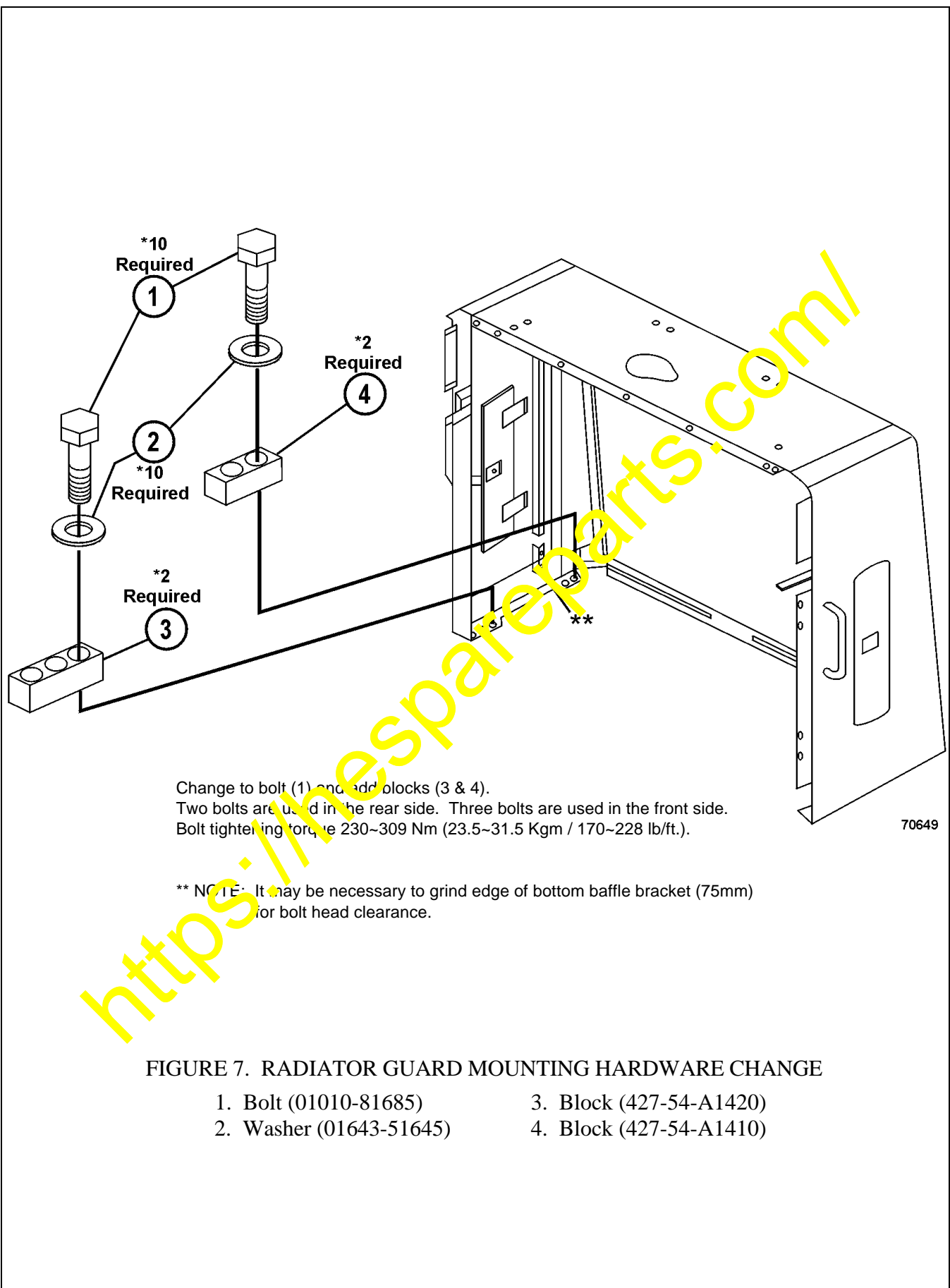


FIGURE 7. RADIATOR GUARD MOUNTING HARDWARE CHANGE

- |                         |                         |
|-------------------------|-------------------------|
| 1. Bolt (01010-81685)   | 3. Block (427-54-A1420) |
| 2. Washer (01643-51645) | 4. Block (427-54-A1410) |

