

# PARTS & SERVICE NEWS

REF NO. AA01162

DATE July 30, 2001

(C)

Page 1 of 3

**SUBJECT:** REPAIR OIL LEAK FROM TRANSMISSION HOSE MOUTHPIECE

**PURPOSE:** To introduce modification procedures to repair oil leakage occurring through the mouthpiece of the transmission hoses.

**APPLICATION:** WA500-3LE Wheel Loader Serial Number A70001 thru A70829

**FAILURE CODE:** 1550AA

**DESCRIPTION:**

Oil leakage may occur through the mouthpieces of the hoses connecting the transmission assembly and the transmission filter and also the hoses between the transmission pump and the transmission filter while the machine is in operation at peak pressure. To prevent this type of oil leakage, make the modification introduced in this Parts & Service News to replace the relevant old parts with the improved parts.

Part Number	Description	Remarks
425-16-21920	Hose	Replacement
425-99-A2180	Hose	Replacement
425-16-21910	Tube	Replacement
425-16-21930	Tube	Replacement
425-16-21940	Bracket	Replacement
07042-30108	Plug	
07000-F3032	O-Ring	
07000-F3035	O-Ring	
07000-A3035	O-Ring	

## Contents of Modification:

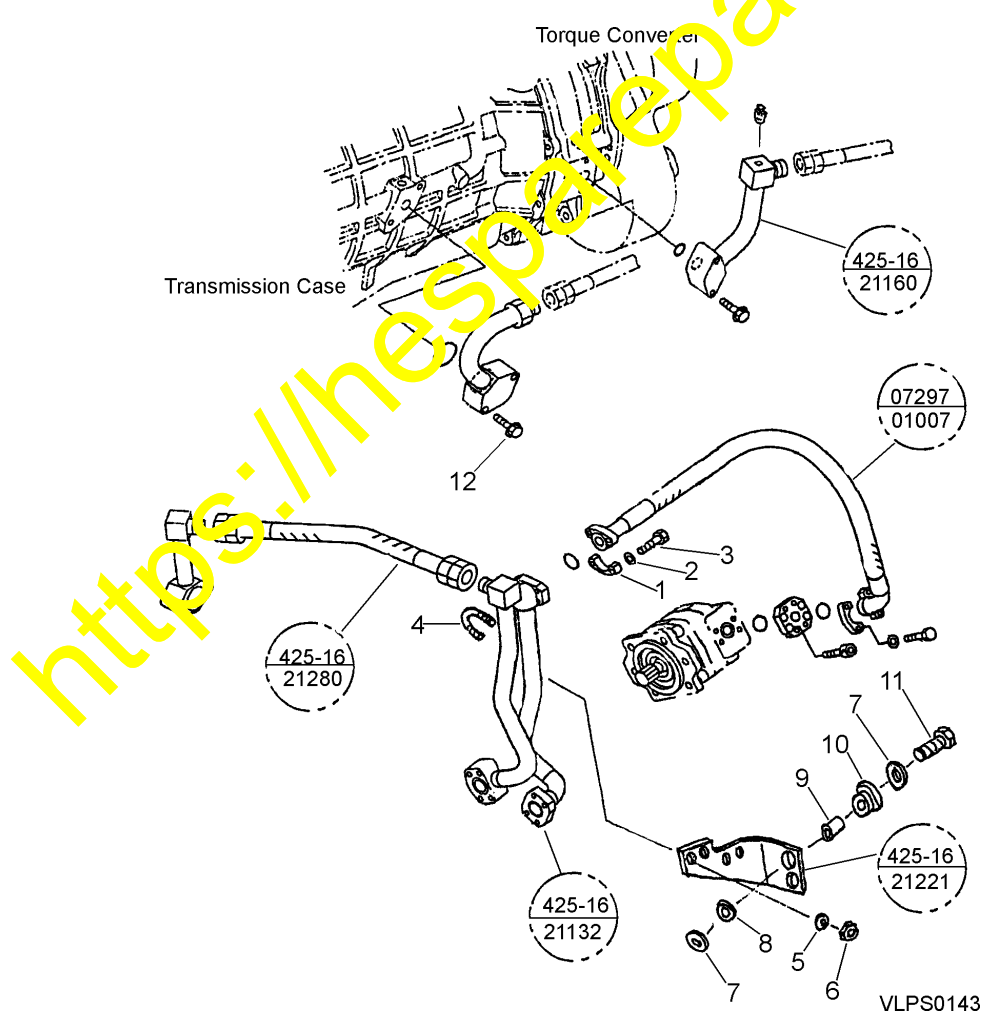
1. Changing the layout of the hose connecting between the torque converter pump and the torque converter filter.
  - a. Reviewing the withstand pressure level: 3 MPa (30 kg/cm<sup>2</sup>) → 14 MPa (140 kg/cm<sup>2</sup>)
  - b. Changing the current S-shaped layout to the straight-shaped layout
2. Changing the type of the hose connecting between the torque converter filter and the transmission assembly.
  - a. Reviewing the hose length: L = 530 mm → L = 510 mm

b. Reviewing the withstand pressure level: 3 MPa (30 kg/cm<sup>2</sup>) → 14 MPa (140 kg/cm<sup>2</sup>)

3. Parts which need to be removed for this modification:

- a. Discard the parts with their part numbers circled in the schematic diagram below.
- b. Discard the O-rings with removed parts.

No.	Part Numbers	Part Names	Qty	No.	Part Number	Description	Qty
1	07371-31049	Flange	(4)	7	415-64-13120	Washer	(4)
2	01643-51032	Washer	(8)	8	419-43-17930	Cushion	(2)
3	07372-21035	Bolt	(8)	9	421-62-18560	Collar	(2)
4	07283-33450	Clip	(1)	10	415-64-13130	Cushion	(2)
5	01643-31032	Washer	(2)	11	01435-01060	Bolt	(2)
6	01597-01009	Nut	(2)	12	01435-01080	Bolt	(2)



4. Installation Procedures:

- a. Install the parts with their circled part numbers in the schematic diagram indicated below.
- b. Install new O-rings with replacement parts.

