

PARTS & SERVICE NEWS

REF NO.	AA01210
DATE	Oct. 15, 2001

SUBJECT: INTRODUCTION OF CAUTION FUNCTION FOR AXLE OIL TEMPERATURE

PURPOSE: To introduce an axle oil temperature cautioning function (Operator's cab spec. machines)

APPLICATION: WA250-3A Wheel Loaders, S/N 53001 and up
 WA250L-3 Wheel Loaders, S/N 53001 and up
 WA250-PL-3 Wheel Loaders, S/N 50001 and up
 WA250-3L Wheel Loaders, S/N A70001 and up
 WA250-3PT Wheel Loaders, S/N A75001 and up
 WA250-3MC Wheel Loaders, S/N A71001 and up
 WA250PT-3MC Wheel Loaders, S/N A78001 and up

FAILURE CODE: 2C01NS

DESCRIPTION:

When the wheel loaders perform a long distance roading procedure, moving from work site to work site, the temperature of the axle oil will rise, which may cause brake seizure. A cautioning function has been developed to notice when the axle oil temperature rises.

This **PARTS & SERVICE NEWS** will introduce the procedure to install this cautioning function.

2. List of parts

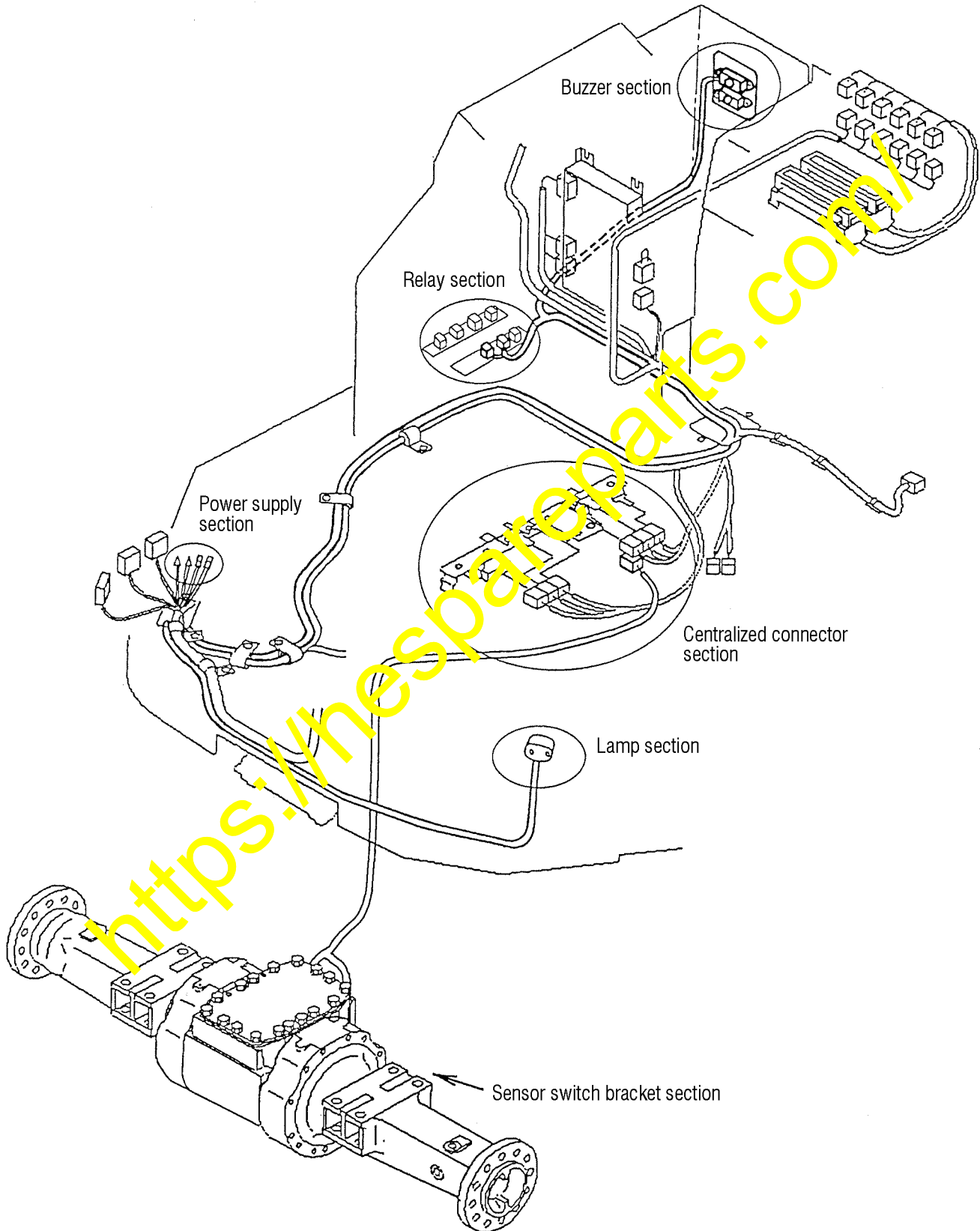
Part No.	Part Name	Q'ty	Remarks
418-06-22610	Wiring harness	1	
421-54-15520	Clip	1	
569-06-61960	Relay	2	
207-06-31160	Buzzer	1	
01220-40412	Screw	2	
01641-20405	Washer	2	
418-06-22640	Plate	1	
01220-40416	Screw	2	
418-43-27910	Cover L.H	1	
23S-06-13270	Indicator lamp	1	
421-06-15321	Grommet	2	
421-06-15330	Screw	2	
421-06-15340	Washer	2	
08037-02512	Grommet	1	
418-06-22620	Wiring harness	1	
08036-01014	Clip	1	
418-43-27920	Bracket	1	
418-43-27930	Bracket	1	
01011-61645	Bolt	4	
01643-31645	Washer	8	
418-43-27941	Plate	1	
01011-61231	Bolt	4	
01643-31232	Washer	4	
01435-01016	Bolt	1	
7861-92-3400	S/W temp	1	
7861-92-3410	S/W temp	1	
418-22-23140	Plug	2	
07002-13034	O-ring	2	
08034-00519	Band	12	

3. Explanations of the operation
 1. The caution lamp located near the left foot in front of the operator's seat will turn on when the axle oil temperature reaches 102 °C.
 2. The caution lamp will turn on and the caution buzzer will make continuous sound as well when the axle oil temperature reaches 120 °C.
4. Required operation for the machine when the caution lamp turns on and when the caution buzzer sounds at the same time
 1. Alleviating the accel pedal depression, slow down the travel speed as much as possible to lessen the frequency of using the brake.
Also, while making a downhill travel, use a lower gear shift range to let the engine braking effected at all times.
 2. If the caution lamp will not turn off even after taking the above operation, stop the machine to re-start the machine only after the caution lamp turns off.
5. Installation procedures
 - 5-1. Installation procedures for the supplementary wiring harnesses
 - 5-2. Installation of the front axle oil temperature sensor switch
 - 5-3. Installation of the front side wiring harness
 - 5-4. Installing the lamp and taking out the power supply
 - 5-5. Installing the buzzer and relay
 - 5-6. Installation procedures for the connector into the centralized connector section
 - 5-7. Electrical circuit diagram

<https://hespareparts.com/>

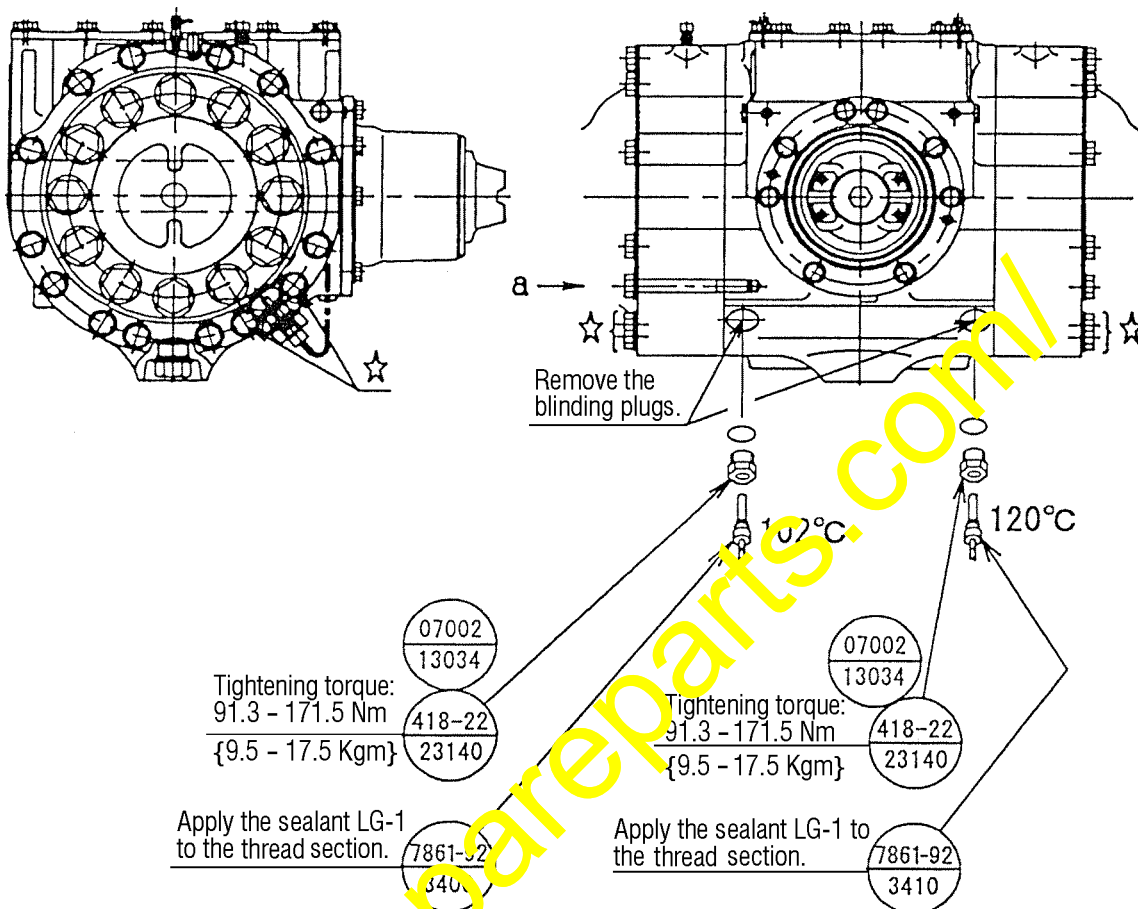
5-1. Installation procedures for the supplementary wiring harnesses

When arranging the wiring harnesses, be careful not to make slacked sections nor interferences.

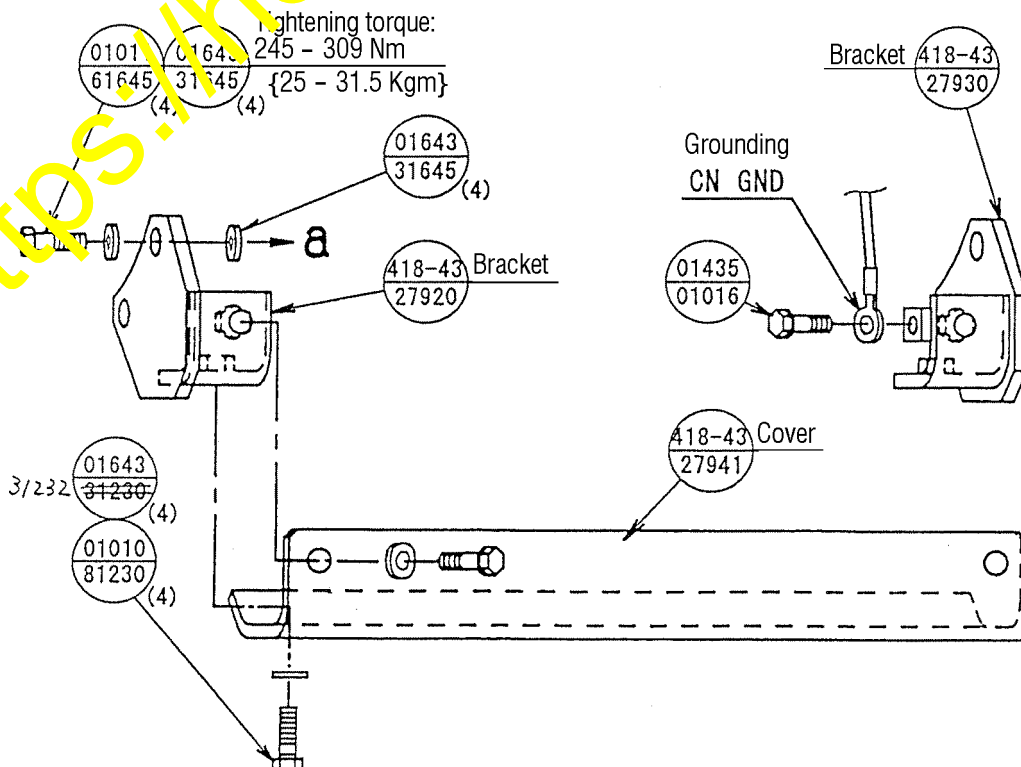


5-2. Installation of the front axle oil temperature sensor switch

- 1) Install the sensor switch to the disc plate wear inspection hole located underneath the front axle. (At 1 place each on the LH and RH side, total 2 places)



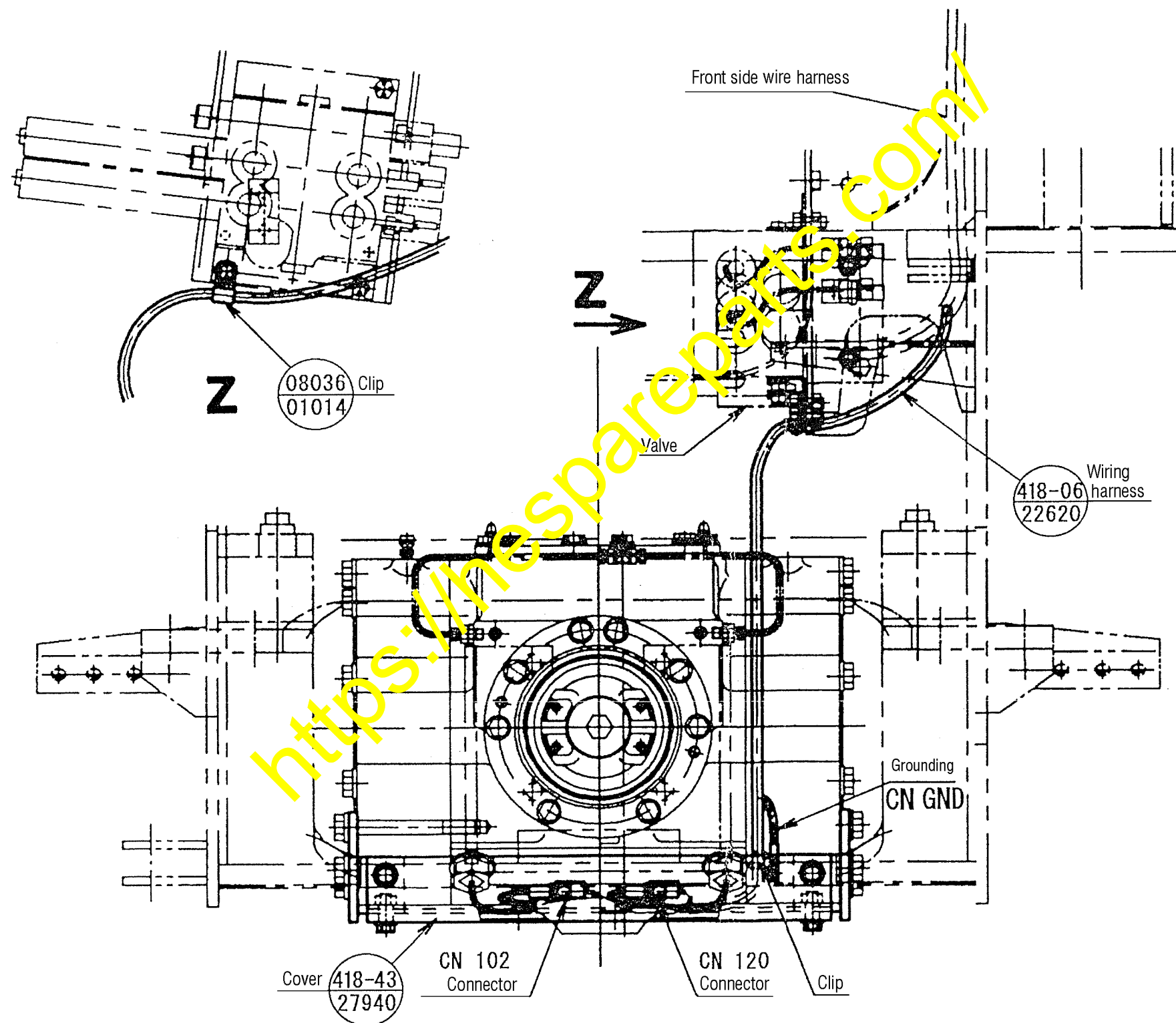
- 2) Install the sensor switch guard.
 - Removing the bolts marked ☆ in the above schematic diagram, change the bolts to install the sensor switch guards.



5-3. Installation of the front side wire harness

- 1) Install the front side wire harness.
(Connecting between the sensor switch and the centralized connector positioned underneath the floor)

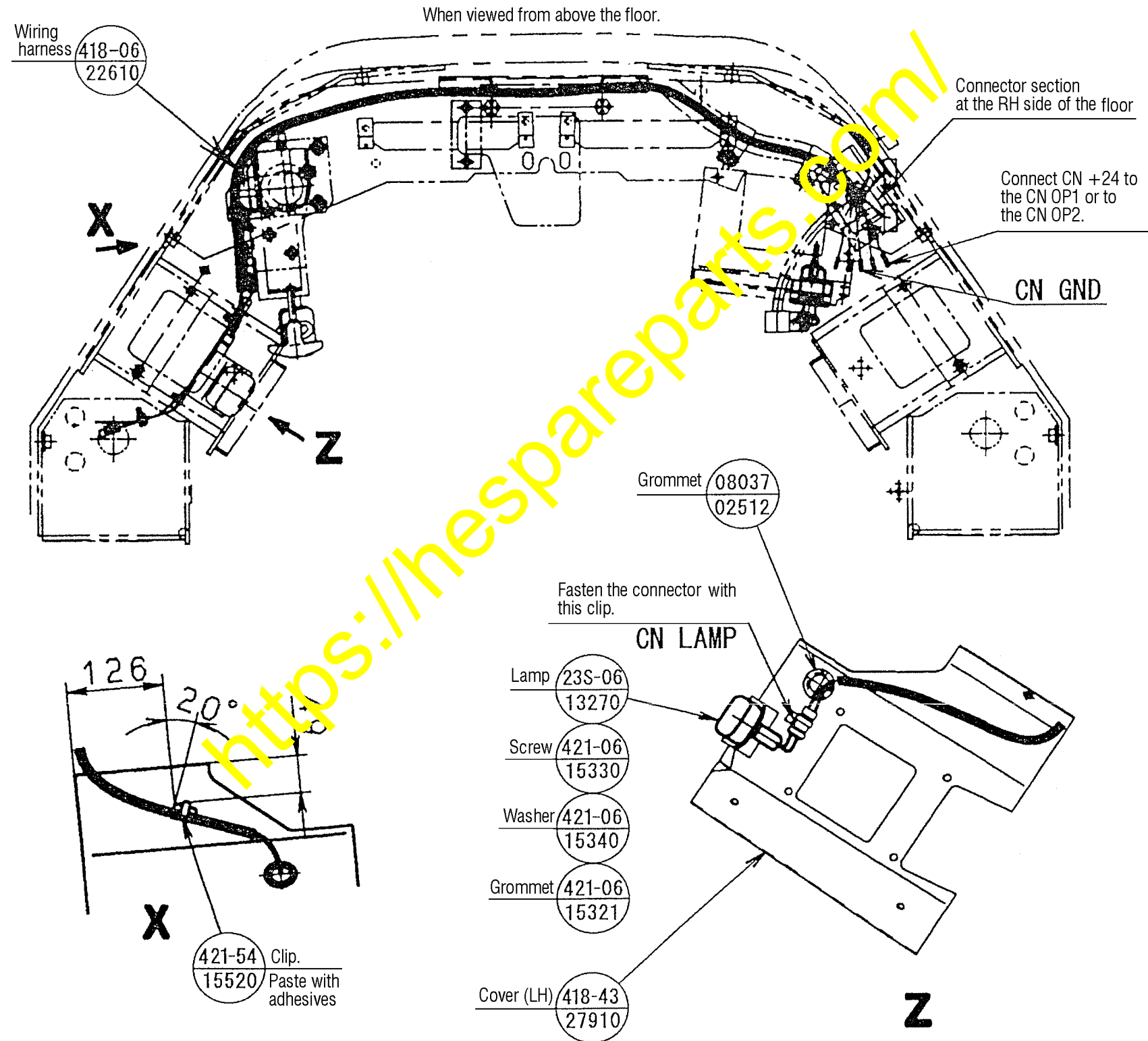
When arranging the wire harnesses, be careful not to make slacked sections nor interferences.



5-4. Installing the lamp and taking out the power supply

- 1) Replace the cover located near the left foot in front of the operator's seat. (418-43-27910)
- 2) Install the caution lamp to the new cover which has replaced the prior cover.

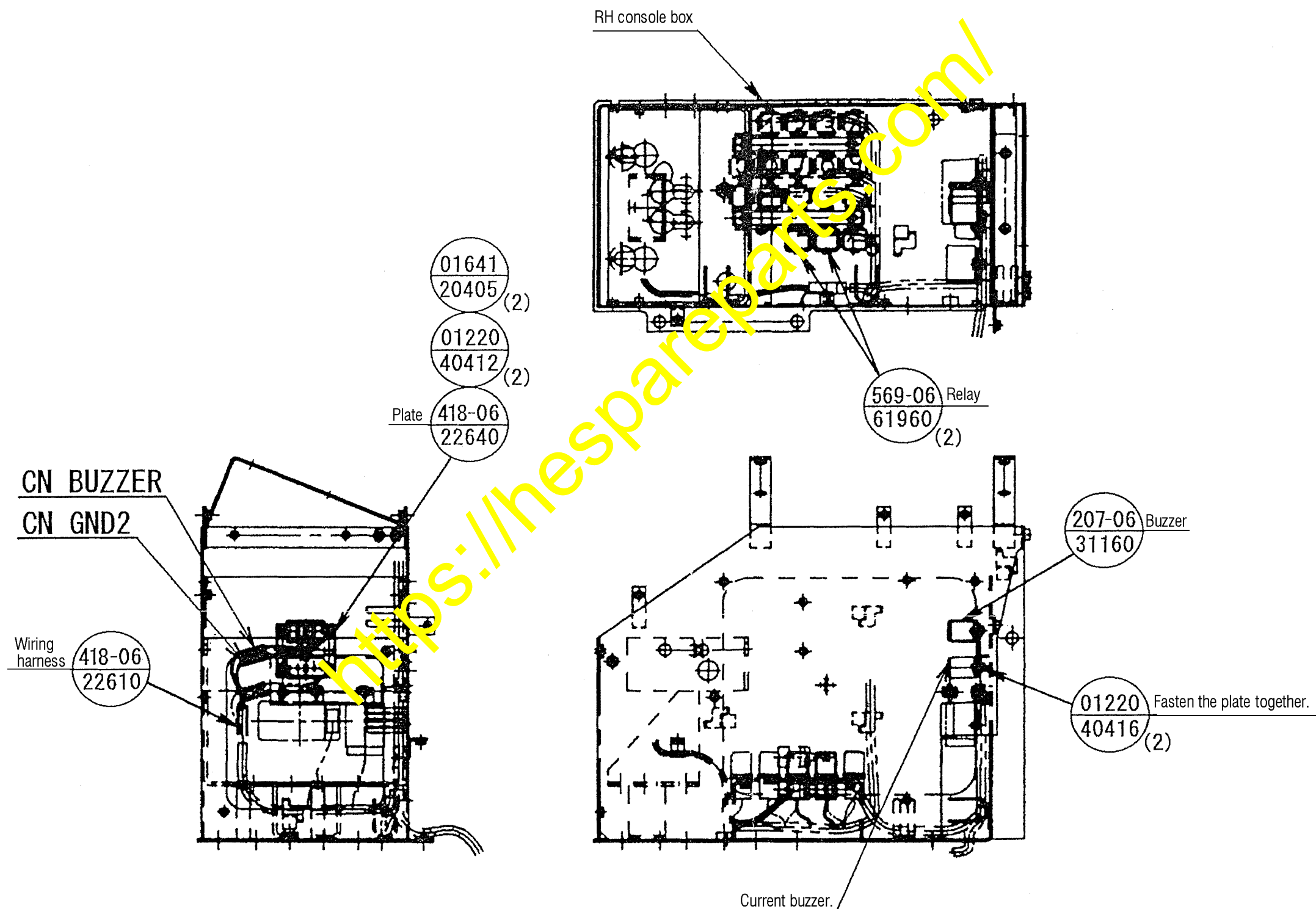
When arranging the wiring harnesses, be careful not to make slacked sections nor interferences.



5-5. Installing the buzzer and relay

- 1) Install the buzzer and relay inside of the RH console box.
- 2) Install the operator's cab side wire harness.
(Connecting between the inside of the RH console box and the centralized connector positioned underneath the floor)

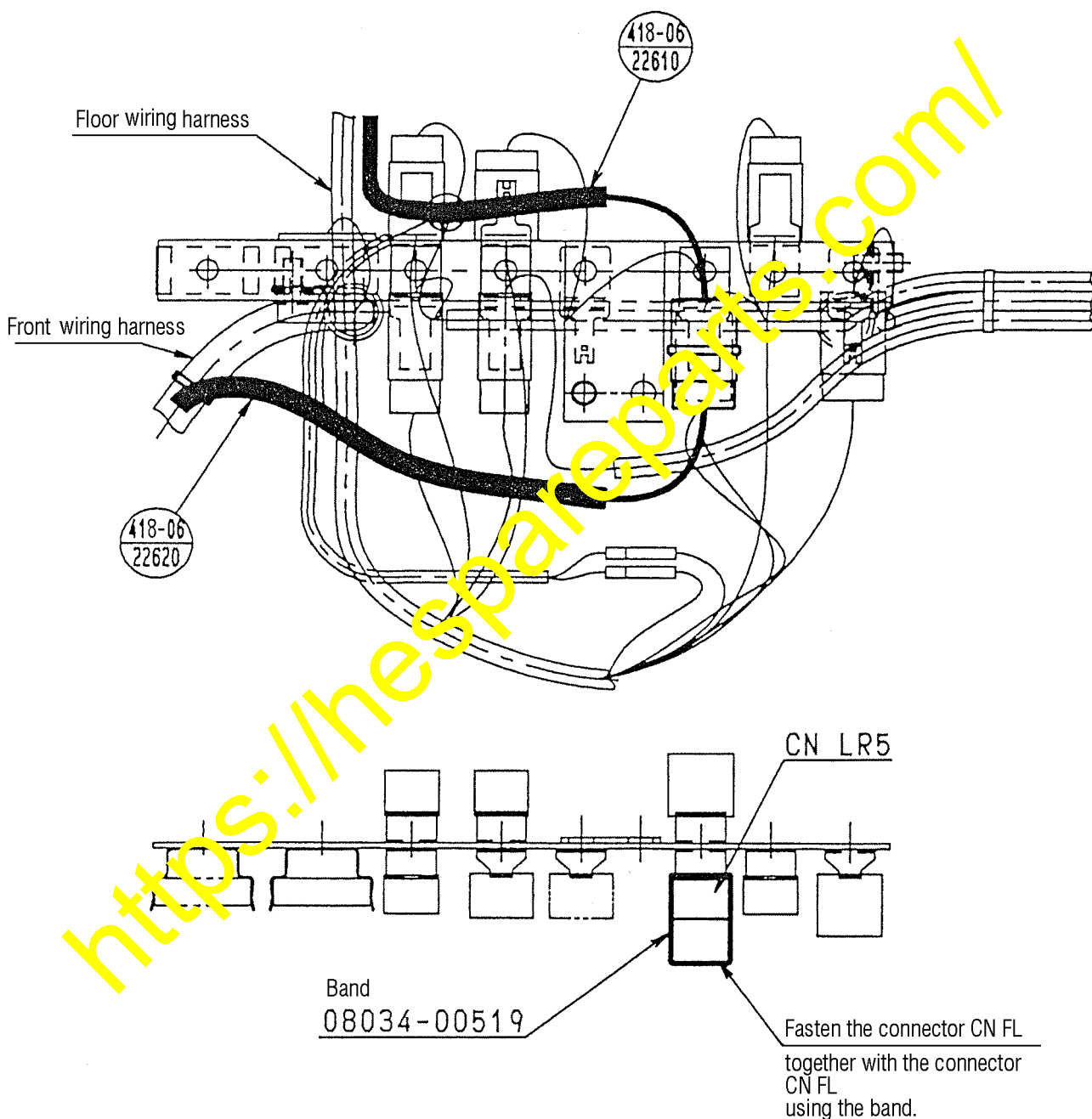
When arranging the wire harnesses, be careful not to make slacked sections nor interferences.



5-6. Installation procedures for the connector into the centralized connector section

- 1) Connect the wiring harnesses (418-06-22610) and (418-06-22620).
- 2) Fasten the connector CN LR5 together with the connector CN FL using the band.

When arranging the wiring harnesses, be careful not to make slacked sections nor interferences.



Connector section located underneath right side of the floor

5-7. Electrical circuit diagram

