

PARTS & SERVICE NEWS

REF NO.	AA01218
DATE	October 17, 2001

- SUBJECT:** REINFORCING DUMP BODIES ON 930E DUMP TRUCKS
- PURPOSE:** To introduce to the field Floor Reinforcement Kit (XK0023) for strengthening of dump bodies.
- APPLICATION:** Komatsu 930E Dump Trucks AFE48-A & Up; A30019, A30026 & Up
- FAILURE CODE:** 7900Z9
- DESCRIPTION:** Floor Reinforcement Kit (XK0023)

Certain factors such as haul road conditions and material size may make it desirable to strengthen the dump body on 930E trucks. A body floor reinforcement kit (XK0023) has been designed for strengthening the floor, body pivots, and bolsters on 930E dump bodies manufactured by Komatsu. The kit has been designed for seven different bodies, all of which are listed in Table 1 below.

Part Number	Capacity
EH8000	241 yd ³
EH8400	276 yd ³
EH9100	258 yd ³
EH9450	251 yd ³
EH9800	276 yd ³
EJ1700	276 yd ³
EJ3675	276 yd ³
EJ4425	276 yd ³

The kit consists of 30 support plates that are to be welded on the dump body for increased strength and durability. Refer to Table 2 for a complete listing of parts. Drawing EJ7687 is included in the kit and provides the necessary specifications for modifying the body. A copy of the drawing has been included on page 3 of this bulletin.

⚠ IMPORTANT ⚠

This kit cannot be installed while the dump body is mounted on the truck. Refer to Section B, "Structures", in the appropriate shop manual for information on removing and installing the dump body.

Before installing the kit, all cracks, flaws, and deformation areas must be properly repaired. Follow the welding procedures outlined in *Parts and Service News, FIELD WELDING FOR ASSEMBLY OR REPAIR* (#AA00046B). For additional welding guidelines, refer to *Welding I (SEBF14001)* and *Welding II (SEBF15002)*.

TABLE 2. FLOOR REINFORCEMENT KIT (XK0023)		
Part Number	Description	Quantity
EJ7687	Drawing, Floor Reinforcement	-
EJ4402	Angle, Center Rear	2
EJ4403	Angle, Center Rear	2
EJ4404	Angle, Outside Rear	2
EJ4405	Angle, Outside Rear	2
EJ4406	Bolster, Outside Pivot	4
EJ4408	Backer	4
EJ4409	Angle, Front Outside, RH	4
EJ4410	Angle, Front Outside, LH	1
EJ4411	Angle, Front Outside, RH	1
EJ4412	Angle, Front Outside, LH	1
EJ4413	Angle, Front Pivot	1
EJ4414	Angle, Front Pivot	1
EJ4415	Angle, Rear Pivot	1
EJ4416	Angle, Rear Pivot	1
EJ4417	Angle, Front Center, RH	1
EJ4418	Angle, Front Center, LH	1
EJ4419	Angle, Front Center, RH	1
EJ4420	Angle, Front Center, LH	1
EJ7688	Plate, Splice	1
EJ7689	Backer, Outside	4
EJ7690	Backer, Inside	4
EJ7691	Backer, Front Pivot	4
EJ7693	Backer, Rear Pivot	4
EJ7694	Backer, Window Pivot	8
EJ7695	Overplate, Outside	4
EJ7696	Overplate, Outside	4
EJ7697	Overplate, Inside	4
EJ7698	Overplate, Inside	4
EJ7699	Plate, Outside	4
EJ7700	Plate, Inside	4

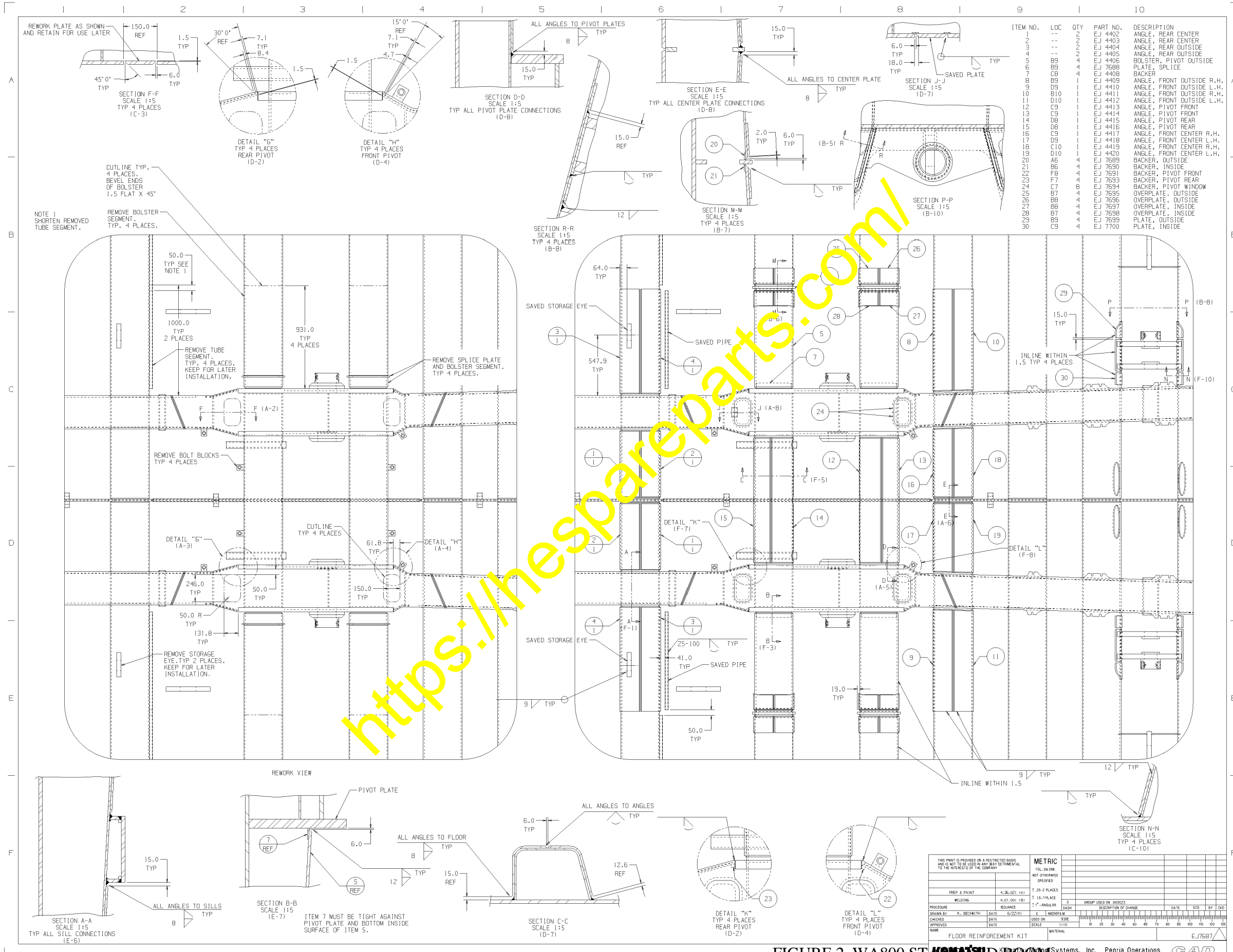


FIGURE 2. WA800 STANDARD BOOM