

PARTS & SERVICE NEWS

REF NO.	AA01245
DATE	Dec. 13, 2001

SUBJECT: EXCHANGE OF A BOTTOM ROLLER

PURPOSE: To introduce to the field a new bottom roller

APPLICATION: H485S-1 Hydraulic Shovel, S/N 15005
PC8000 Hydraulic Mining Shovel, S/N 12001 thru 12035

FAILURE CODE: 3040ZA

DESCRIPTION:

New bottom rollers for the above are released:

The main difference to the old ones are as follows: Outer diameter (OLD): 660mm
Outer diameter (NEW): 680mm

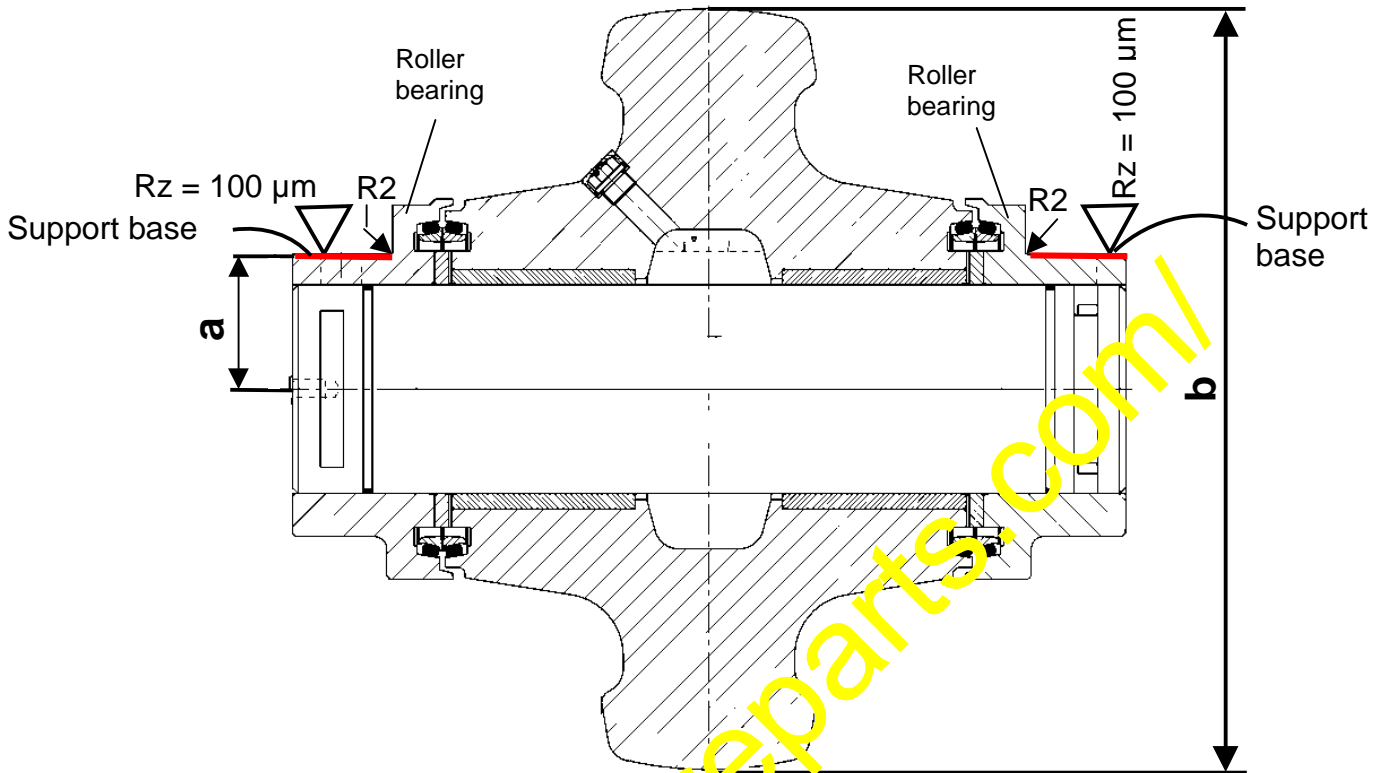
The bottom roller assembly OLD VERSION: P/N 448 947 40 is replaceable* with the bottom roller assembly NEW VERSION P/N 915 755 40.

If you want to replace only the bottom roller body by the new version, you have to machine the support base of the roller bearings:

FROM THE OLD VALUE "a" = 130mm
TO THE NEW VALUE "a" = 120^{-0.2} mm (see illustration next page).

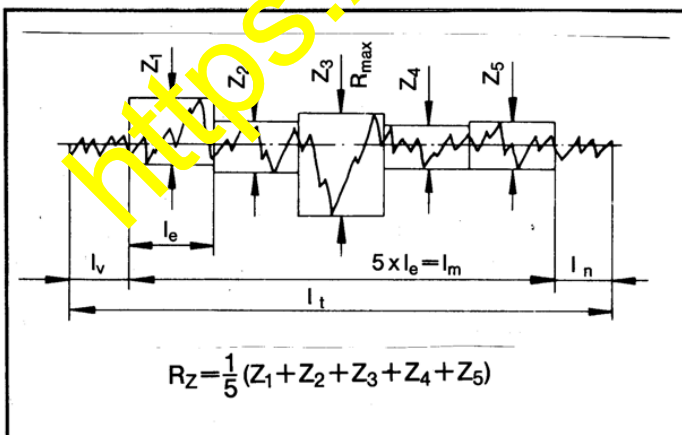
Part Number	"a" (mm)	"b" (mm)
Old bottom roller ass'y: 448 947 40	130	660
New bottom roller ass'y: 915 755 40	120 ^{-0.2}	680

https://mespareparts.com/

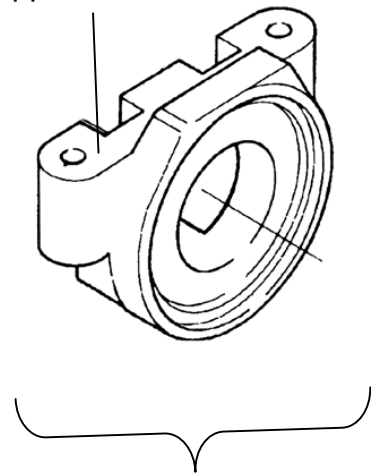


Oberflächenrauigkeit / Surface roughness				
DIN 3141	~	▽	▽▽	▽▽▽
DBM standard Werknorm 241 932 40 *	R _Z 120	R _Z 100	R _Z 25	R _Z 6,3
DIN - ISO 1302	√	√	√	√

* R_Z = Peak-to-valley height, arithmetic means, determined over 5 measuring points.
Arithmetisches Mittel der Rauhtiefe aus 5 Einzelmessungen.



Support base



Roller bearing