

PARTS & SERVICE NEWS

REF NO.	AA01246
DATE	Dec. 13, 2001

SUBJECT: SWING GEAR
PURPOSE: EXCHANGE OF RING GEAR
APPLICATION: PC3000 Hydraulic Mining Shovel S/N 06174 and 06182
FAILURE CODE: 2600CA
DESCRIPTION:

1. Remove slew motor from gear box

Do not remove hydraulic hoses
Leave complete assembly on the platform
Refer to Illustration #1

2. Refer to Illustration #2
Remove nuts (15) and washer (16).
Remove plates (13)
Remove bolts (11)
Lift off gear from platform. Weight approximately 1800 kg.

<https://hespareparts.com/>

3. Exchange of ring gear in the workshop

Disassembly in the workshop

Put gear box as shown on wooden blocks even on the ground.

Illust.3

Drain the gear oil and collect it in an adequate receptacle.

Before disassembly mark the mounting position of the individual part for easier assembly afterwards.

- Install 3 eye bolts M16 into fastening holes of the hydraulic motor "A" to the break housing.
- Remove 4 bolts (116) M16 – size of socket wrench 24.
- First lift up the complete assy. for approx. 40mm with adequate lifting gear. Take care that if the sun gear shaft (14) is remaining in the lifted assy. will not fall down when the assy. is lifted completely.

Illust. 4

- Remove 4 bolts (51) M16 socket head bolts with hex. driver size 14.
- Install 4 socket head bolts M16x160 to the bore holes of the bolts (51).
- Remove sun gear shaft (14).
- Install 3 eye bolts M16 to the planetary carrier (89).
- Lift off planetary carrier.
- Install 4 eye bolts M16 to ring gear (2).
- Hook up the complete gear and lift up just for 20mm.
- Hit the heads of the installed socket head bolts by means of copper pushrod to push the ring gear (2) out of the seat.
- After that lift off the ring gear (2).
- Inspect ball bearing (62) and if necessary exchange.

Illust. 5+6

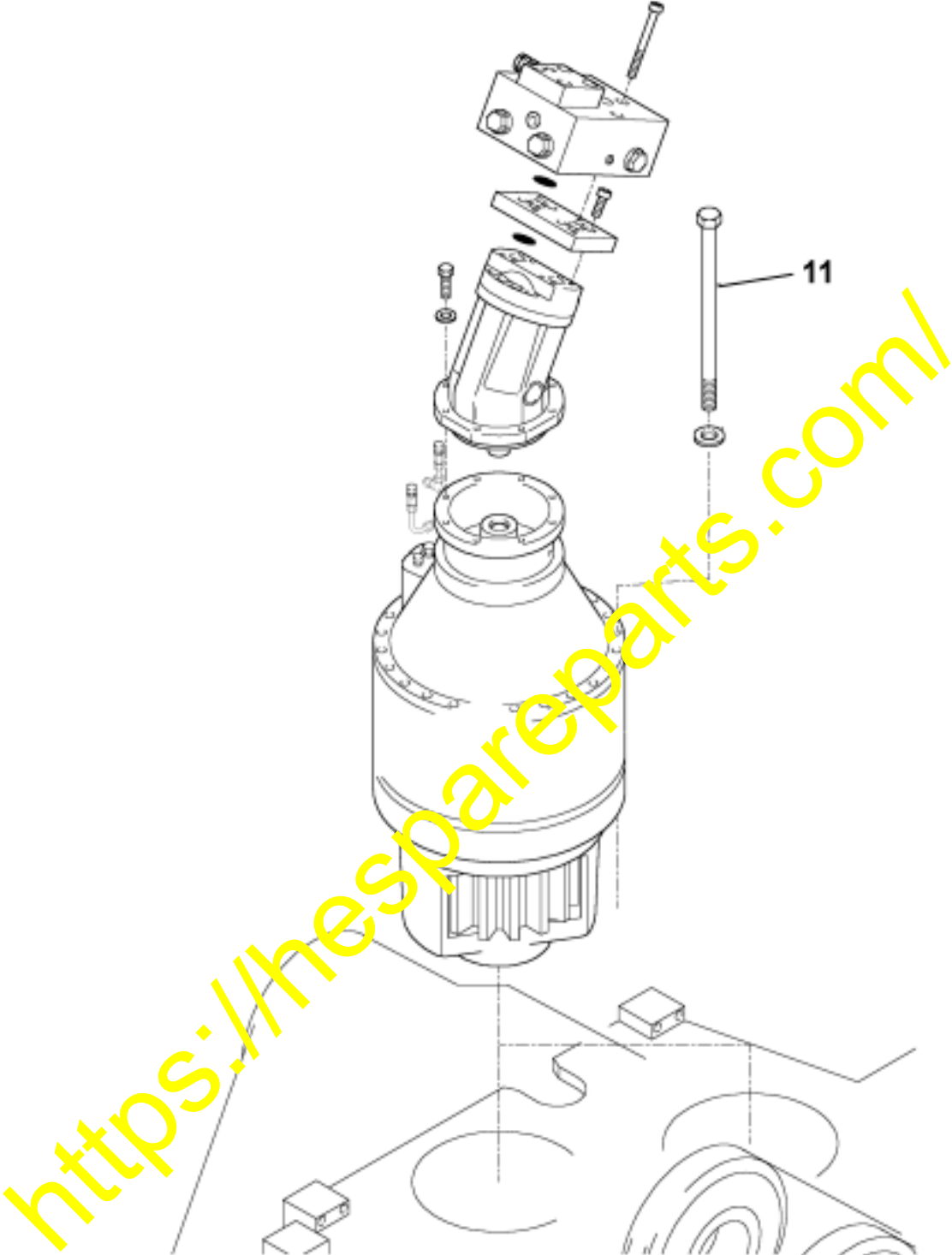
Installation of new ring gear

Illust. 3

- Install new O-ring (26).
- Install new ring gear (2) before heat up the area of the seat in (162) to 60°C.
- Install planetary carrier (89).
- Install sun gear shaft (14).
- Install the complete assy. (adapter flange (100) with brake assy.)
Take care for good matching of the tothing when lifting it over the sun gear shaft.
- Install bolts (116), tightening torque 255 Nm, thread not lubricated.
- Install bolts (51), tightening torque 176 Nm, thread not lubricated.
- Refill oil according Lubrication and Maintenance Manual.
- Reinstall gearbox to the machine.
- Reinstall hydraulic motor.

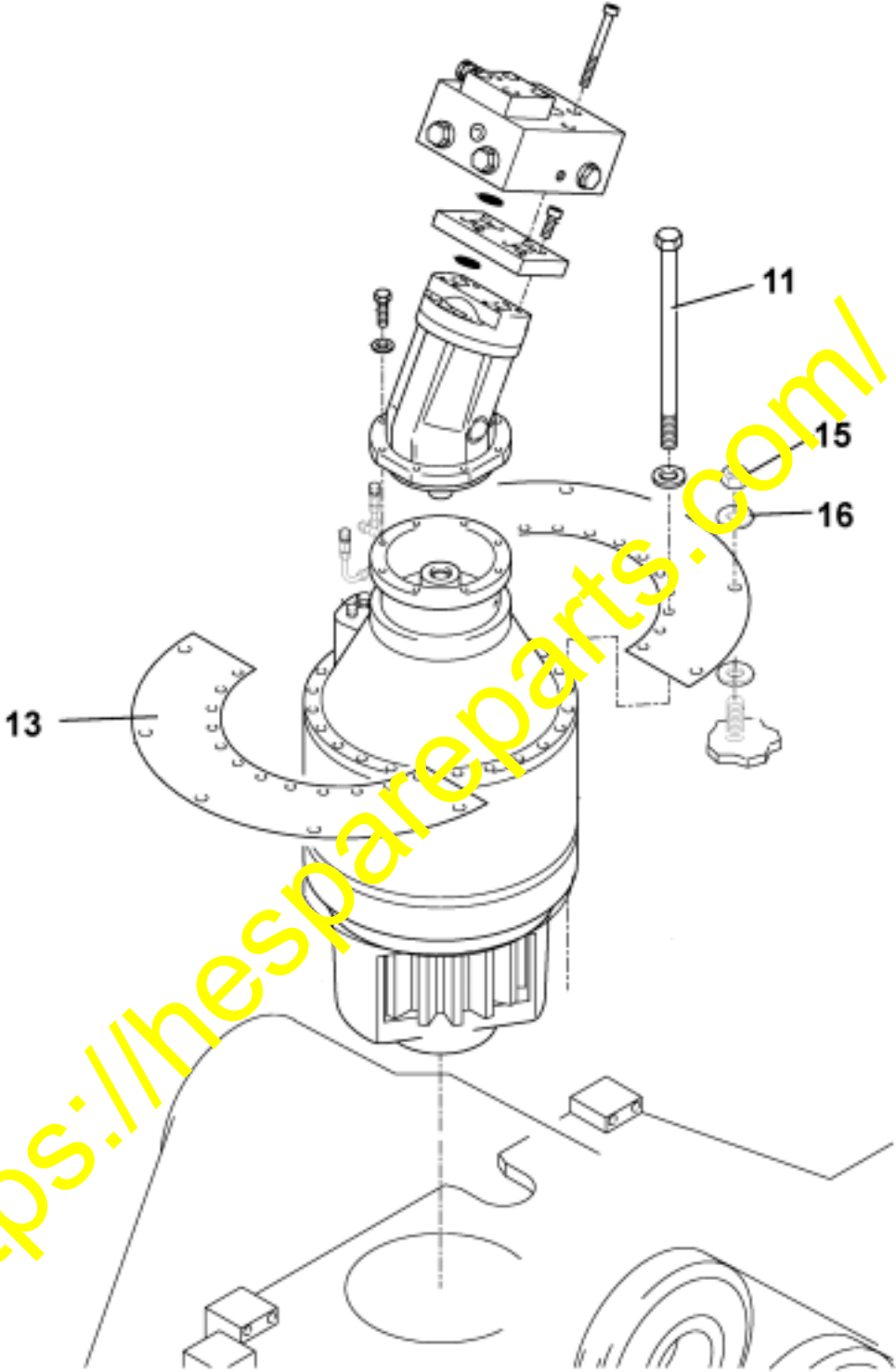
<https://hespareparts.com/>

Illust. 1



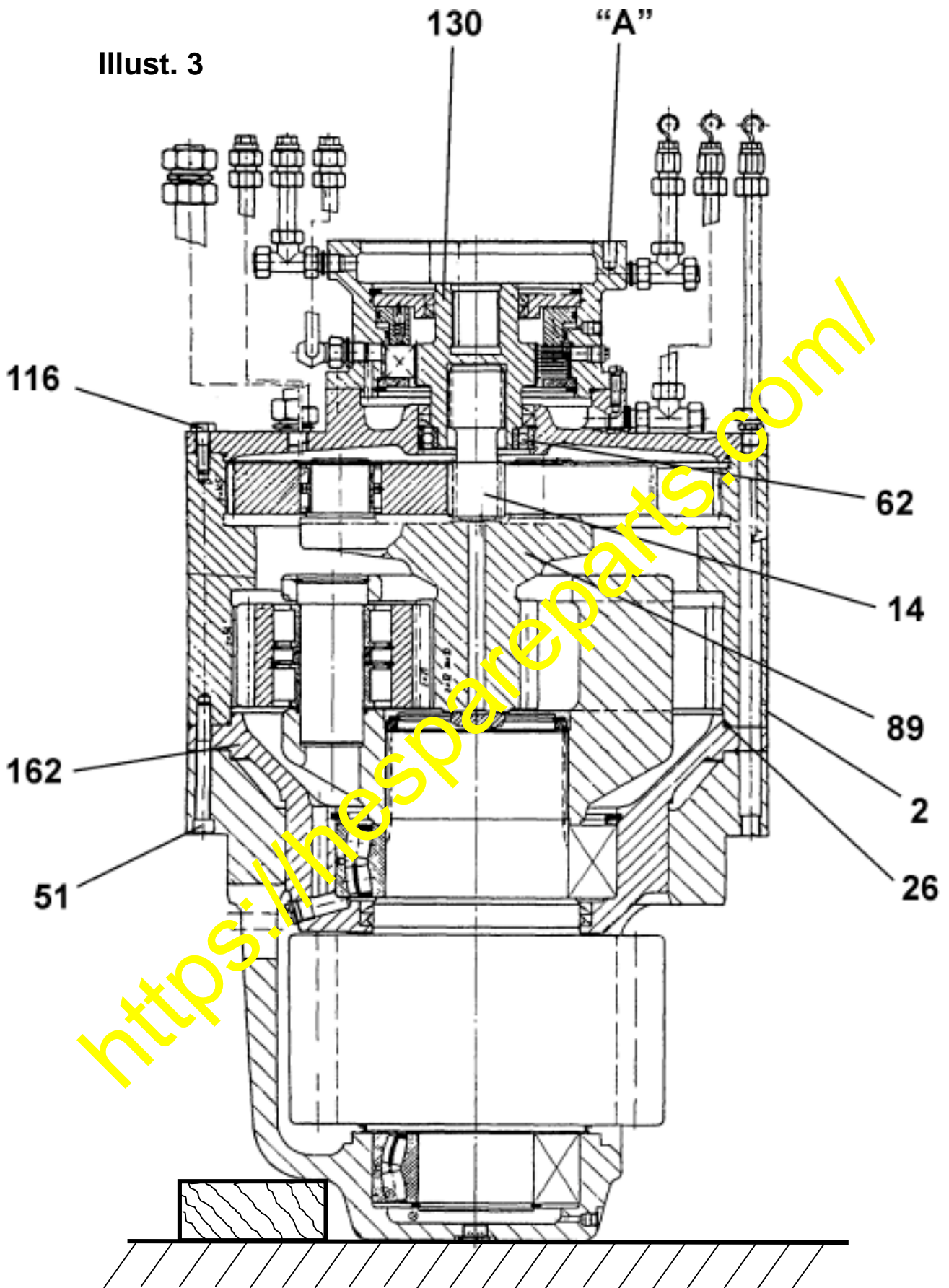
PC5500

Illust. 2

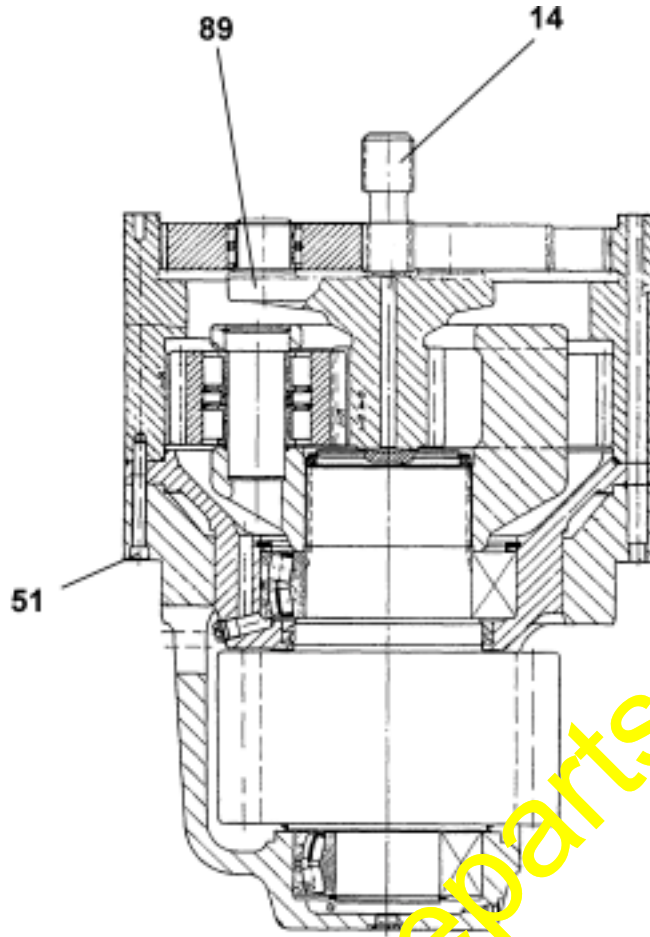


PC3000

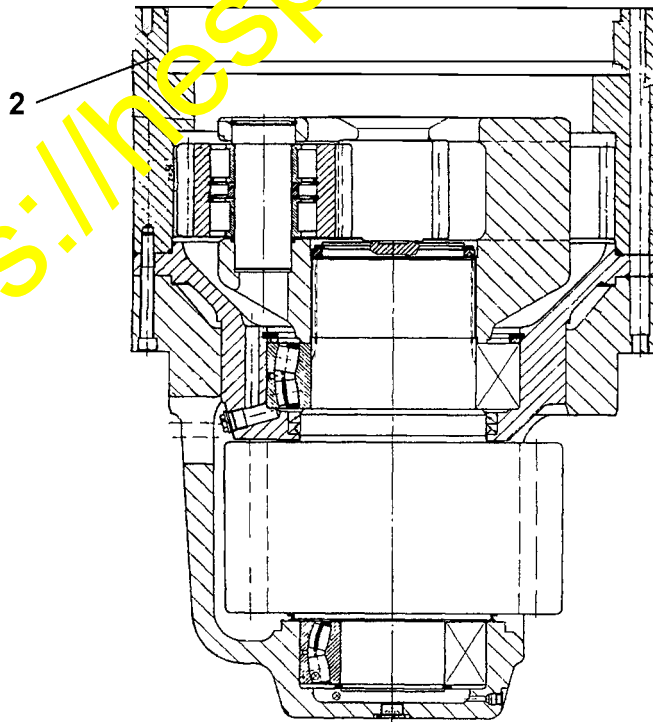
Illust. 3



Illust. 4

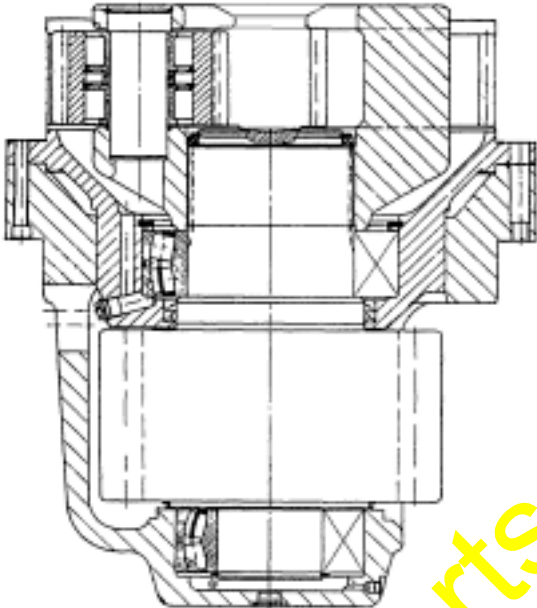


Illust. 5



<https://thespareparts.com/>

Illust. 6



<https://hespareparts.com/>