

PARTS & SERVICE NEWS

REF NO.	AA01251
DATE	Dec. 14, 2001

(C)

SUBJECT: INTRODUCTION OF IMPROVED T/C TRUNNION MOUNTNG GREASE HOSE

PURPOSE: To introduce a new remote grease hose for the torque converter trunnion mounting with a modified mouthpiece

APPLICATION: WA500-1 Wheel Loader, S/N 10001 thru 12999
 WA500-1L Wheel Loader, S/N 20051 thru 20130, A20131 thru A20940
 WA500-1LC Wheel Loader, S/N A60001 and up
 WA500-1LE Wheel Loader, S/N A61001 and up
 WA500-3 Wheel Loader, S/N 50001 thru 50977
 WA500-3L Wheel Loader, S/N A70001 and up
 WA500-3LK Wheel Loader, S/N A71001 thru A71928

FAILURE CODE: 15U3AD

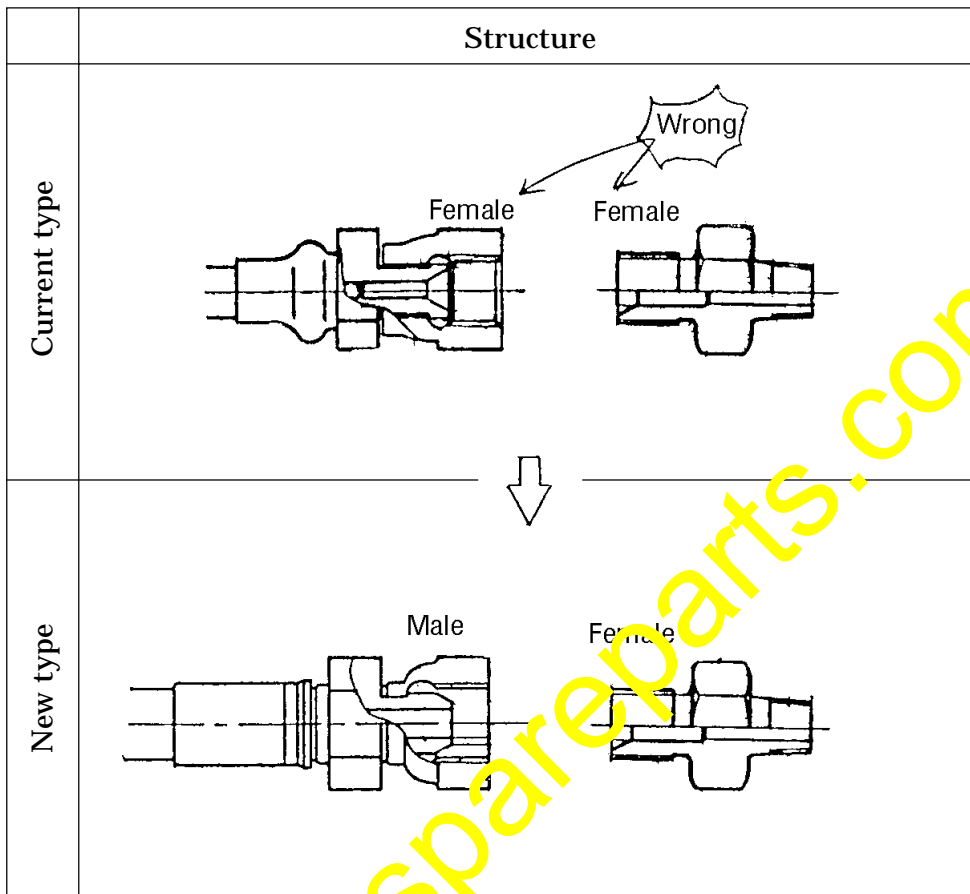
DESCRIPTION:

Relative to the machines listed above, there have been reports of grease leaking out from the mouthpiece section of the remote grease hose on the torque converter trunnion mount due to improper configuration of mouthpieces. If this trouble is noticed, replace the hose referring to this **PARTS & SERVICE NEWS**.

LIST OF PARTS:

Part No.	Part Name	Qty.	Remarks
4254628110 (2097216380)	Hose (Hose)	1 (1)	

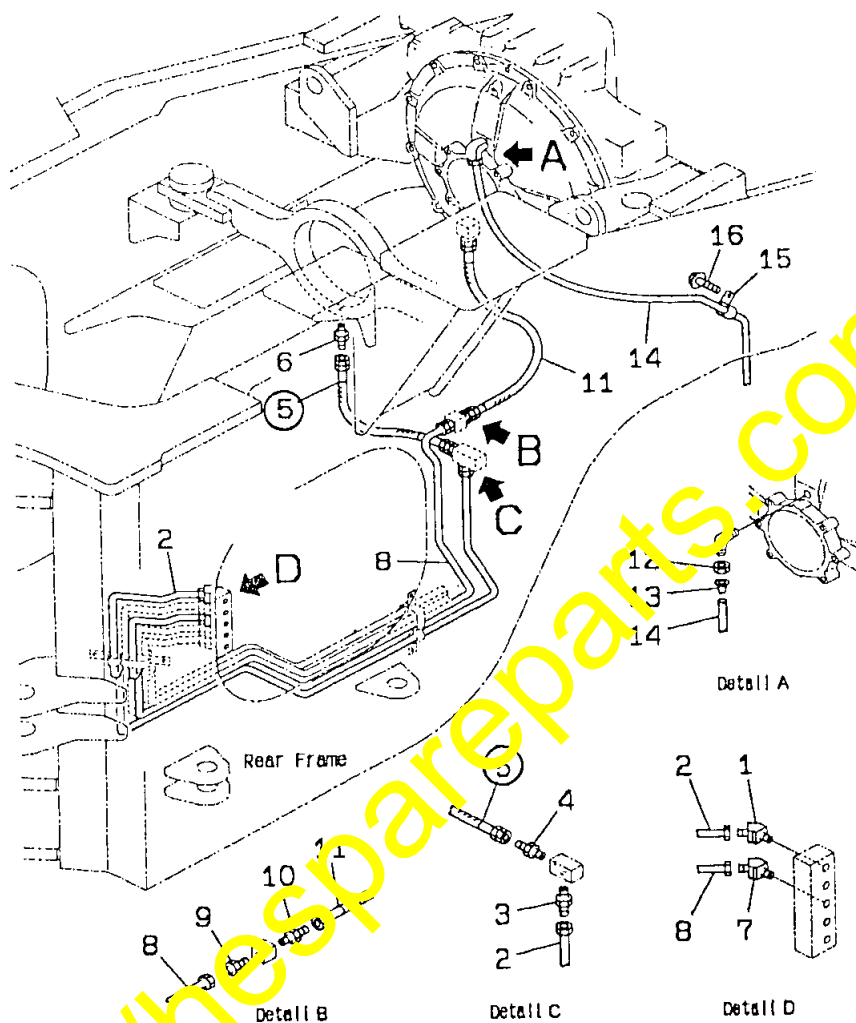
3. Contents of Modification



<https://hespareparts.com/>

4. Steps for Disassembling (Case for WA500-3)

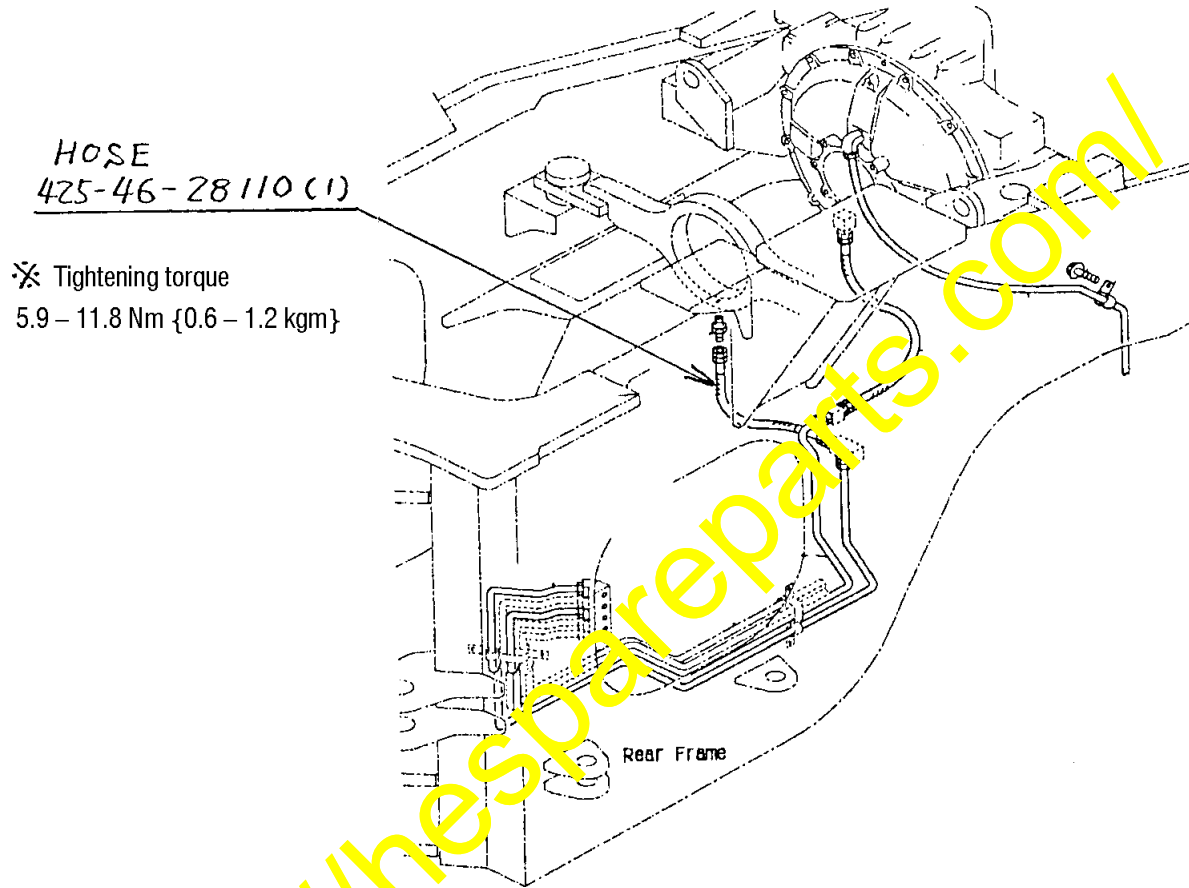
1) Remove those parts in the figure below the part nos. of which are encircled.



1	423-S95-2840	Elbow	1
2	425-46-26220	Tube	1
3	423-09-12110	Connector	1
4	425-46-18180	Nipple	1
⑤	209-72-16380	Hose	1
6	21T-72-17690	Adapter	1
7	423-S95-2840	Elbow	1
8	425-46-26230	Tube	1
9	423-09-12110	Connector	1
10	425-46-18180	Nipple	1
11	21T-72-17740	Hose	1
12	07832-00817	Nut	1
13	07831-00813	Sleeve	1
14	07822-00810	Tube	1
15	08036-01214	Clip	1
16	01435-01016	Bolt	1

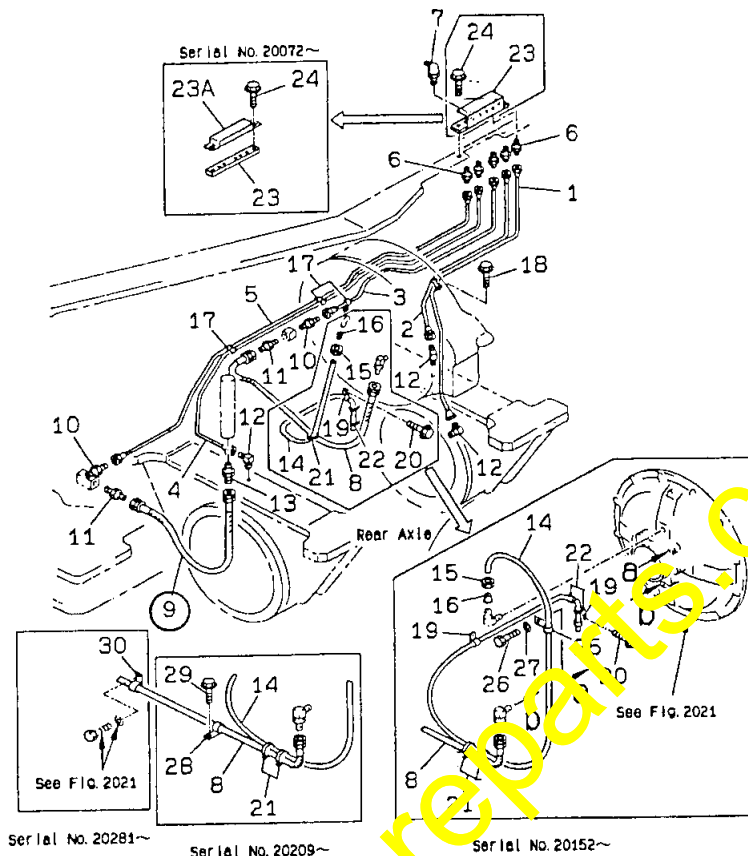
5. Steps for Reassembling (Case for WA500-3)

- 1) Build in the prepared new part (Part No. 425-46-28110) as indicated in the figure below.



6. Steps for Disassembling (Case for WA500-1)

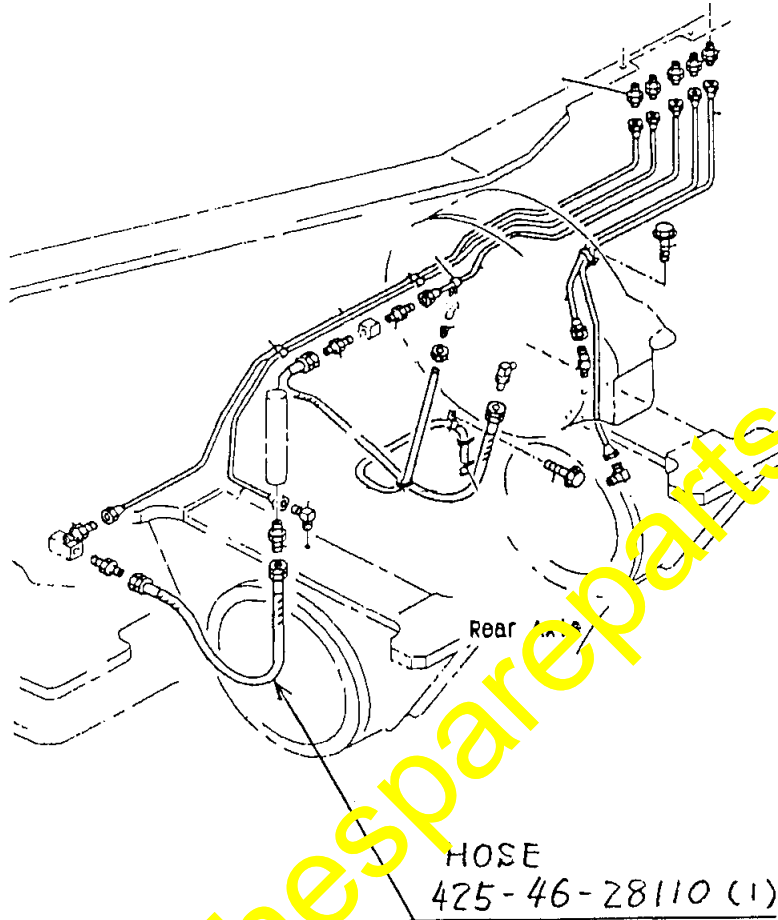
1) Remove those parts in the figure below the part nos. of which are encircled.



1	425-46-18111	Tube	1
2	425-46-18121	Tube	1
3	425-46-18142	Tube	1
4	425-46-18133	Tube	1
5	425-46-18152	Tube	1
6	423-09-12110	Connector	5
7	07020-00900	Fitting grease	5
8	21T-72-17720	Hose	1
⑨	201-71-16330	Hose	1
10	423-09-2110	Connector	2
11	425-46-18180	Nipple	2
12	425-09-12540	Elbow	3
13	21T-72-17690	Adapter	1
14	07822-00814	Tube	1
15	07822-00810	Tube	1
16	07832-00817	Nut	1
17	07831-00813	Sleeve	1
18	04434-50610	Clip	7
19	01435-01016	Bolt	4
20	04434-51310	Clip	2
	04434-51310	Clip	1
	01435-01016	Bolt	2
	01435-01016	Bolt	1
21	08034-20536	Band	2
	◆08034-00823	Band	2
	08034-00823	Band	1
22	08034-20519	Band	2
	◆08034-00414	Band	2
23	425-70-14151	Plate	1
	□425-70-14150	Plate	1
23A	416-S06-1320	Cover	1
24	01435-01035	Bolt	2
	01435-01030	Bolt	2
25	04434-51310	Clip	1
26	01435-01014	Bolt	1
27	01643-31032	Washer	1
28	08036-01414	Clip	1
29	01435-01016	Bolt	1
30	08036-01214	Clip	1

7. Steps for Reassembling (Case for WA500-1)

- 1) Build in the prepared new part (Part No. 425-46-28110) as indicated in the figure below.



HOSE
425-46-28110 (1)

※ Tightening torque
5.9 – 11.8 Nm {0.6 – 1.2 kgm}

<https://hespareparts.com/>