

PARTS & SERVICE NEWS

REF NO.	AA02024
DATE	January 02, 2002

SUBJECT: REINFORCING DUMP BODIES ON 830E DUMP TRUCKS

PURPOSE: To introduce to the field Floor Reinforcement Kit (XK0055) for strengthening of dump bodies.

APPLICATION: Komatsu 830E Dump Trucks AFE32-A & Up, AFE50-A & Up, A30544 & Up

FAILURE CODE: 7900Z9

DESCRIPTION: Floor Reinforcement Kit (XK0055)

Certain factors such as haul road conditions and material size may make it desirable to strengthen the dump body on 830E trucks. A body floor reinforcement kit (XK0055) has been designed to reposition and rework the bolster joints outside the body pivot on 830E dump bodies manufactured by Komatsu. The kit has been designed for four different bodies, all of which are listed in Table 1 below.

Part Number	Capacity
EH8025	193 yd ³
EJ1775	193 yd ³
EJ6875	193 yd ³
EJ0900	221 yd ³

The kit consists of 36 support plates that are to be welded on the dump body for increased strength and durability. Refer to Table 2 for a complete listing of parts. Drawing EJ8611 is included in the kit and provides the necessary specifications for modifying the body. A copy of the drawing has been included on page 3 of this bulletin.

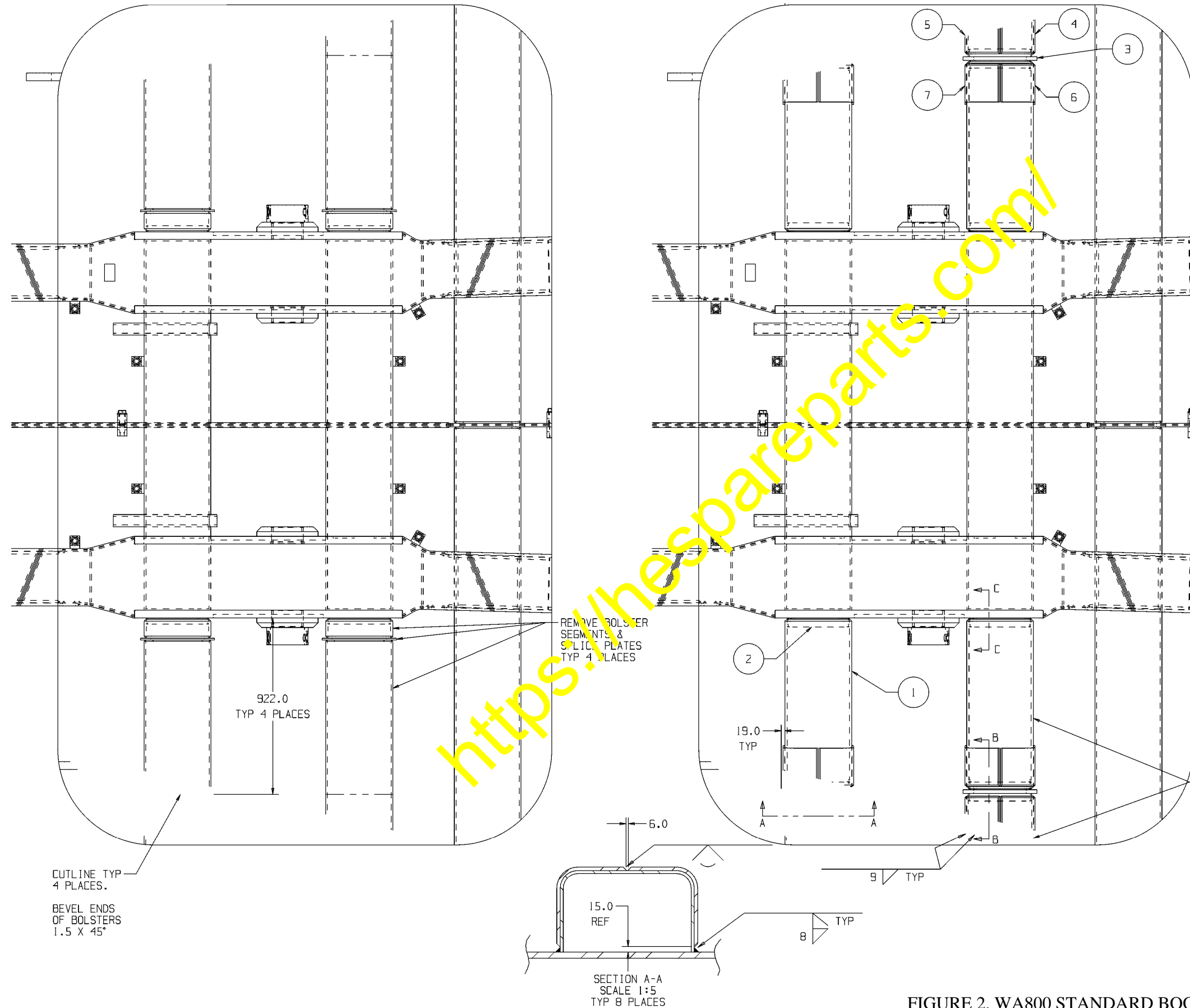
▲ IMPORTANT ▲

This kit cannot be installed while the dump body is mounted on the truck. Refer to Section B, "Structures", in the appropriate shop manual for information on removing and installing the dump body.

Before installing the kit, all cracks, flaws, and deformation areas must be properly repaired. Follow the welding procedures outlined in *Parts and Service News, FIELD WELDING FOR ASSEMBLY OR REPAIR (#AA00046B)*. For additional welding guidelines, refer to *Welding I (SEBF14001)* and *Welding II (SEBF15002)*.

TABLE 2. FLOOR REINFORCEMENT KIT (XK0055)		
Part Number	Description	Quantity
EJ8611	Drawing, Floor Reinforcement	-
EJ6865	Bolster	4
EJ6866	Backer, Bolster	4
EJ8612	Plate, Splice	4
EJ8613	Angle, Outside	4
EJ8614	Angle, Outside	4
EJ8615	Angle, Inside	4
EJ8616	Angle, Inside	4
EJ8617	Backer, Outside	4
EJ8618	Backer, Inside	4

<https://hespareparts.com/>



ITEM NO.	QTY	PART NO.	DESCRIPTION
1	4	EJ 6865	BOLSTER
2	4	EJ 6866	BACKER, BOLSTER
3	4	EJ 8612	PLATE, SPLICE
4	4	EJ 8613	ANGLE, OUTSIDE
5	4	EJ 8614	ANGLE, OUTSIDE
6	4	EJ 8615	ANGLE, INSIDE
7	4	EJ 8616	ANGLE, INSIDE
8	4	EJ 8617	BACKER, OUTSIDE
9	4	EJ 8618	BACKER, INSIDE

ITEM 2 MUST BE TIGHT AGAINST PIVOT PLATE AND BOTTOM INSIDE SURFACE OF ITEM 1.

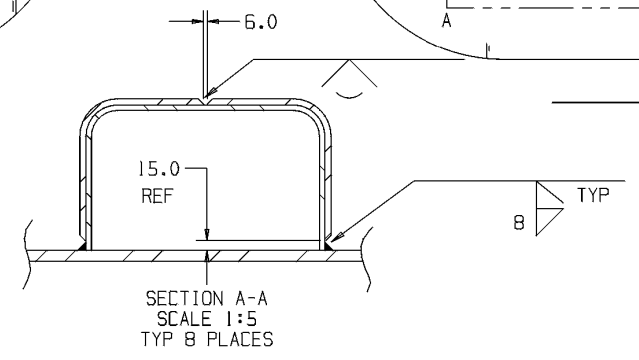
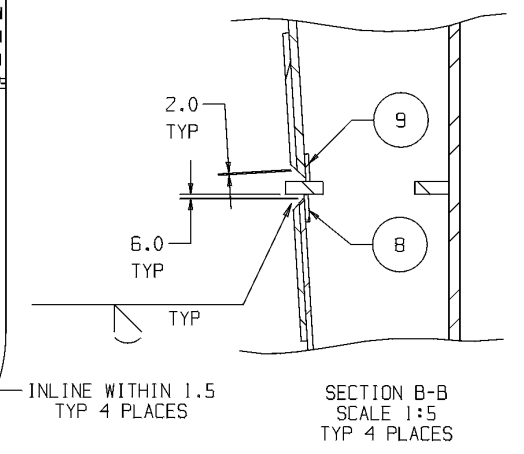
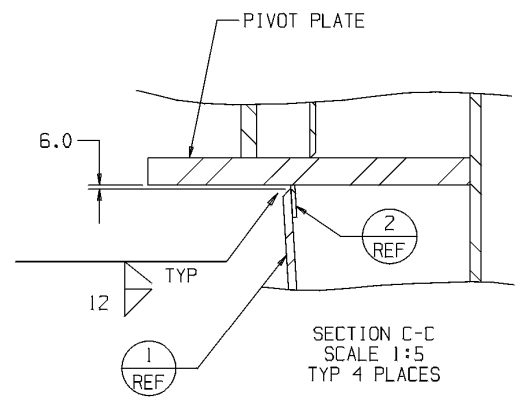


FIGURE 2. WA800 STANDARD BOOM

70661