

PARTS & SERVICE NEWS

REF NO.	AA02103
DATE	March 25, 2002

SUBJECT: INTRODUCTION OF NEW SEAT AND JOYSTICK BRACKET

PURPOSE: To introduce to the field a new air suspension seat and reinforced joystick bracket for replacing existing components which may lack stability after time.

APPLICATION: Komatsu Wheel Loaders:
 WA700-1L: A20001 thru A20015
 WA800-2L: A20001 thru A20019
 WA800-2LC: A20020 thru A20028
 WA900-1L: A20001 thru A20007
 WA900-1LC: A20008 thru A20023

FAILURE CODE: 5700ZC

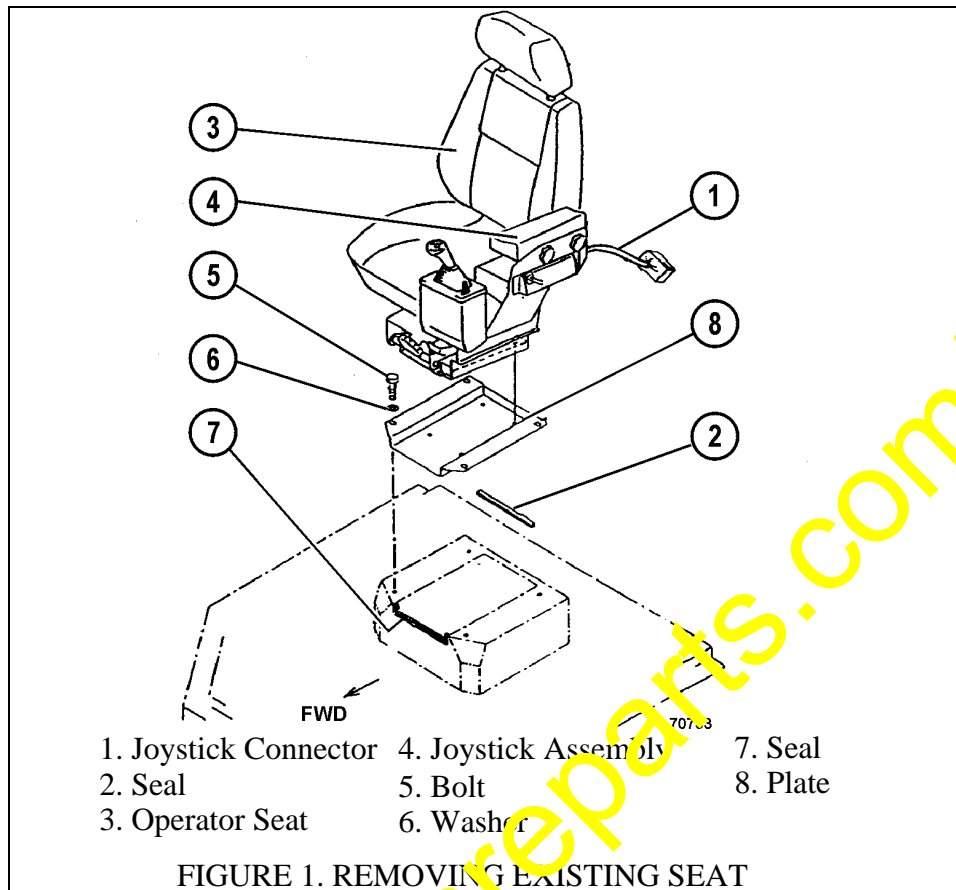
DESCRIPTION:

Typically, after 2000 hours of vehicle operation, the suspension seat and joystick console become unstable. The lack of stability causes the seat and joystick to sway during operation making machine operation difficult.

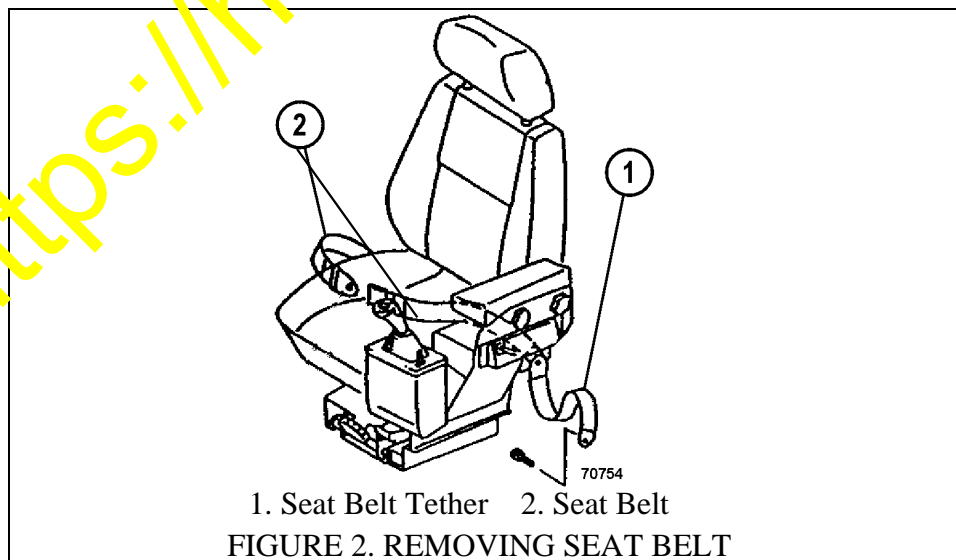
A new improved seat and reinforced joystick bracket have been developed for increased sturdiness and greater stability. Replace existing seats with the new seat and joystick bracket. Necessary parts for the conversion are listed in the table below.

SEAT AND JOYSTICK BRACKET PARTS LIST		
Part Number	Description	Quantity
423-960-A040	Seat	1
427-54-A2160	Bracket*	1
427-54-A2150	Bracket**	1
427-54-A2120	Plate Cover	2
421-960-A520	Seat Belt***	1
02030-70719	Bolt	2
416-40-11150	Washer	2
VN6737	Bolt	4
SV9372	Nut	4
08021-00400	Connector	2
08031-10108	Terminal	2

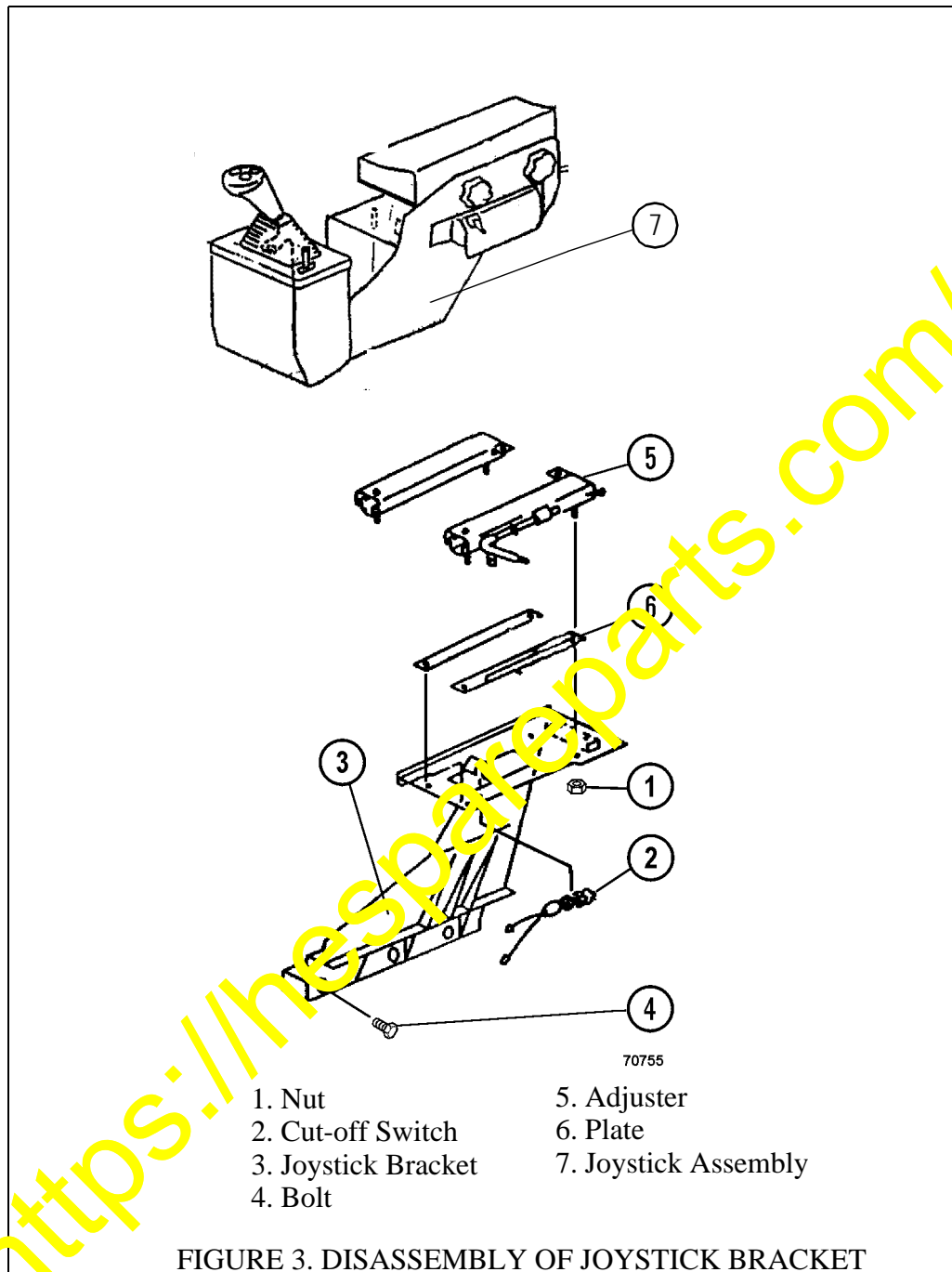
* For machines built in the US.
 ** For machines built in Japan.
 ***For replacement of seat belt 09409-10001 only.



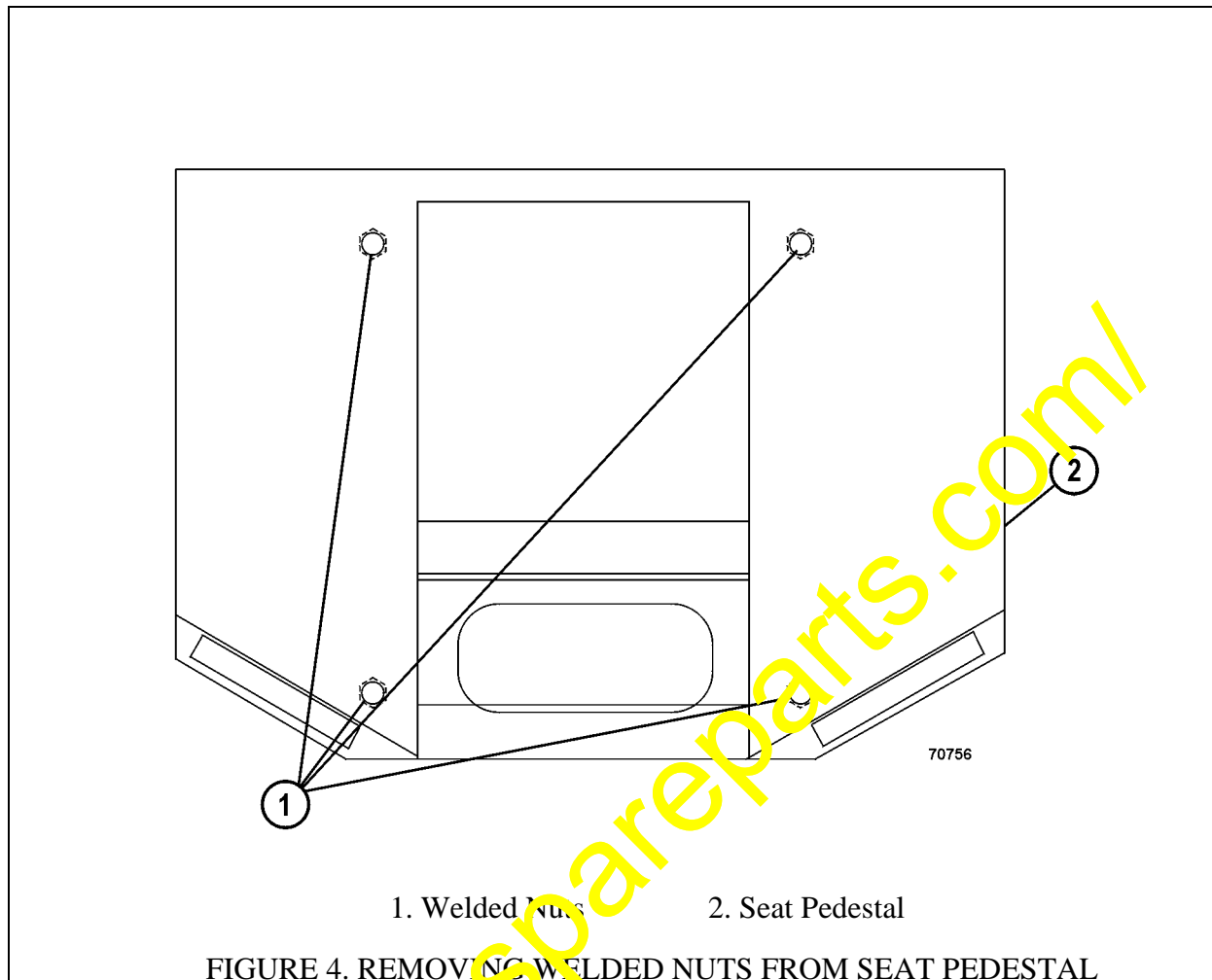
1. Disconnect joystick connector (1, Figure 1).
2. Remove four bolts (5) and washers (6) from the seat mounting. Adjust the seat position to gain access to all of the bolts.
3. Remove seat (3) and plate (8). These components will not be reused.
4. Remove seal (2) and seal (7), and discard.



5. Remove seat belt (2, Figure 2) and two tethers (1) from the operator's seat. Seat belts, part number 09409-10001, are to be replaced with seat belt, 421-960-A520.
6. Disconnect the two tethers from the cab mounting structures and discard the bolts and washers.

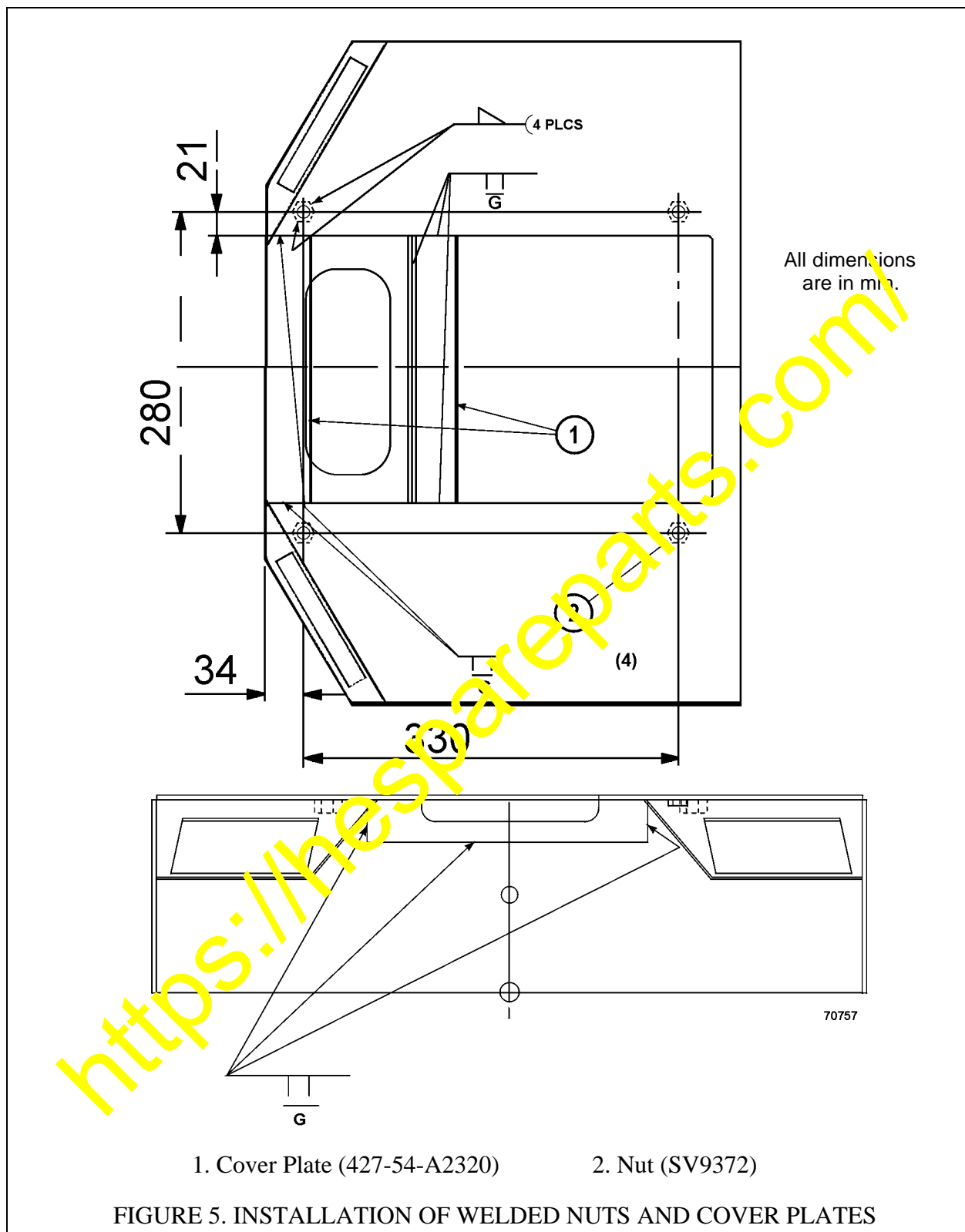


7. Remove four nuts (1, Figure 3) from the joystick bracket and remove joystick assembly (7), adjusters (5), and plates (6).
8. Disconnect cut-off switch (2) and remove from joystick bracket (3).
9. Remove three bolts (4) and remove the joystick bracket.



10. Remove four welded nuts (1, Figure 4) from seat pedestal (2).

11. Weld the open holes until entirely filled, and grind smooth.



12. Drill four, 12.3 mm (0.484 in.) holes according to the dimensions in Figure 5.
13. Weld four nuts (2, Figure 5) to the bottom side of the drilled holes.
14. Weld cover plates (1) to the dimensions shown in Figure 5.

INSTALLATION OF NEW SEAT AND JOYSTICK BRACKET

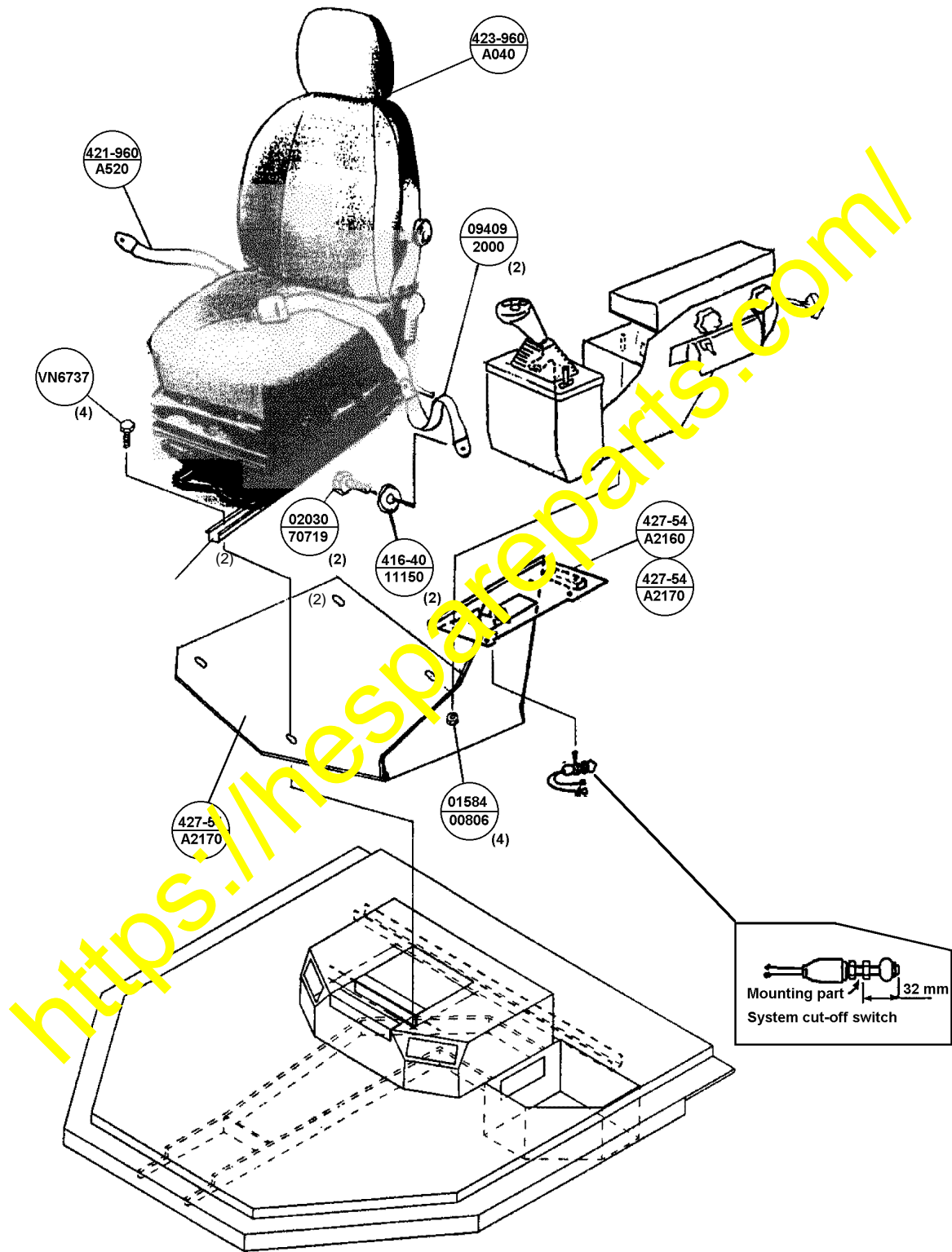


FIGURE 6. ASSEMBLY OF SEAT COMPONENTS

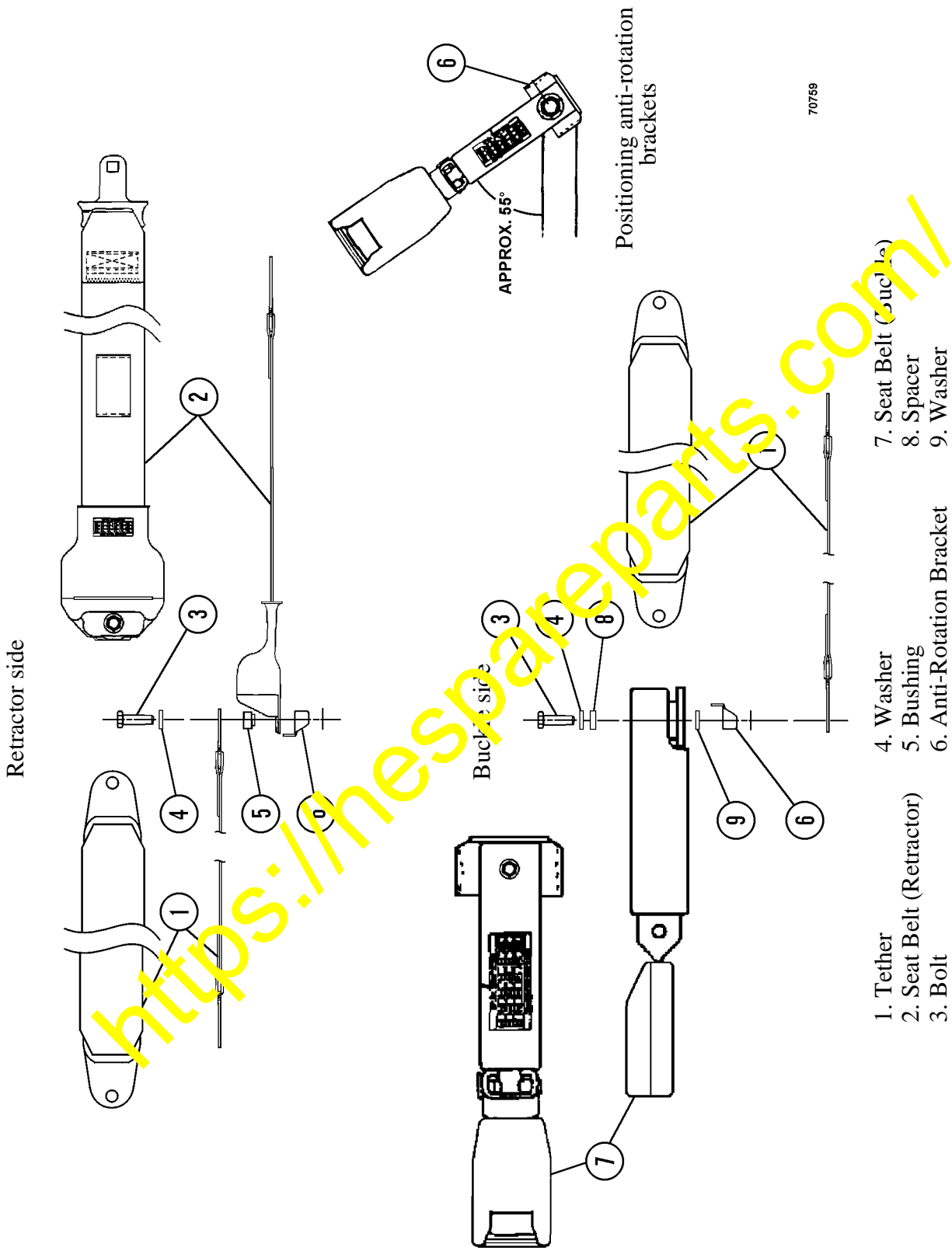


FIGURE 7. SEAT BELT INSTALLATION

15. Install seat belt assembly (421-960-A520) to the operator seat. Refer to Figure 7 for correct installation of components. Note the correct position of the anti-rotation bracket (6).
16. Tighten bolts (3, Figure 7) to a torque of 45 ft.lbs. (6.2 kgm).
17. Position new joystick bracket to the seat pedestal and place the new operator's seat on top of the bracket. Refer to Figure 6. Align the holes and install four new bolts (VN6737). Adjust the seat to gain access to all of the holes. Tighten the bolts to a torque of 21 ft.lb. (31.3 kgm).
18. Connect joystick connector (1, Figure 1) to the joystick harness.
19. Attach the loose ends of the seat tethers to their respective cab mounting surfaces. Install new bolts (02030-70719) and washers (416-40-11150) and tighten the bolts to a torque of 51 ft.lbs. (7.0 kgm).
20. Reinstall the existing cutout switch. Refer to Figure 6 for the proper installation dimension. Connect the female lead to CN11 on the joystick harness. Connect the male lead to CN12 on the joystick harness.
21. Place plates (6, Figure 3), adjusters (5), and joystick assembly (7) into position on the joystick bracket. Install four nuts (1) to secure the assembly.
22. Attach connector (08021-00400) to red lead (1, Figure 8) and terminal (08021-10108) to black lead (2).
23. Connect the two leads from the operator's seat to CNJS19 and CN280 at connector CNJS20 (8).
24. Check for proper operation of all related components before returning the machine to service.

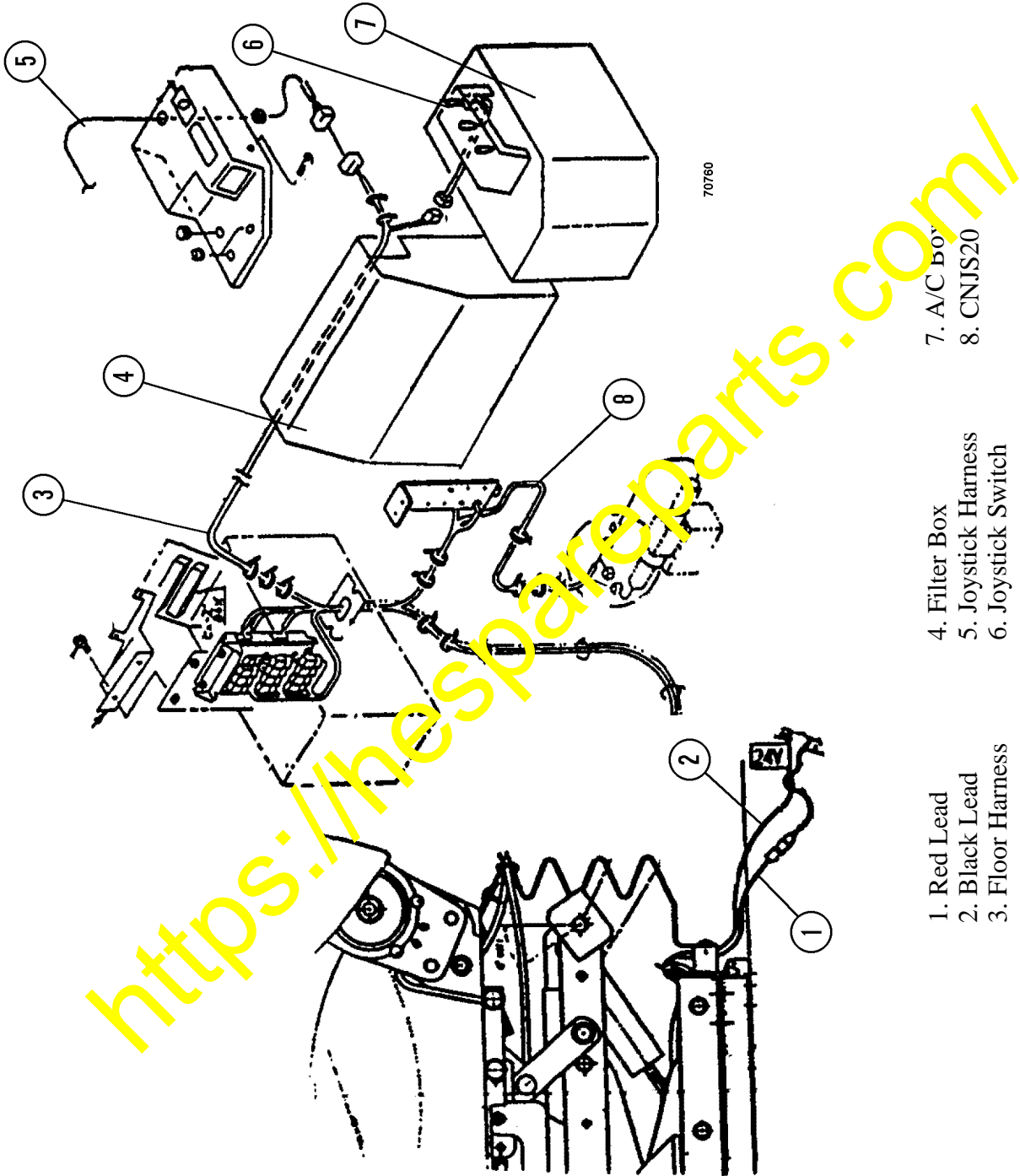


FIGURE 8. WIRING INSTALLATION