

# PARTS & SERVICE NEWS

REF NO.	AA02155
DATE	June 20, 2002

**SUBJECT:** REPLACEMENT OF THE SWING GEAR

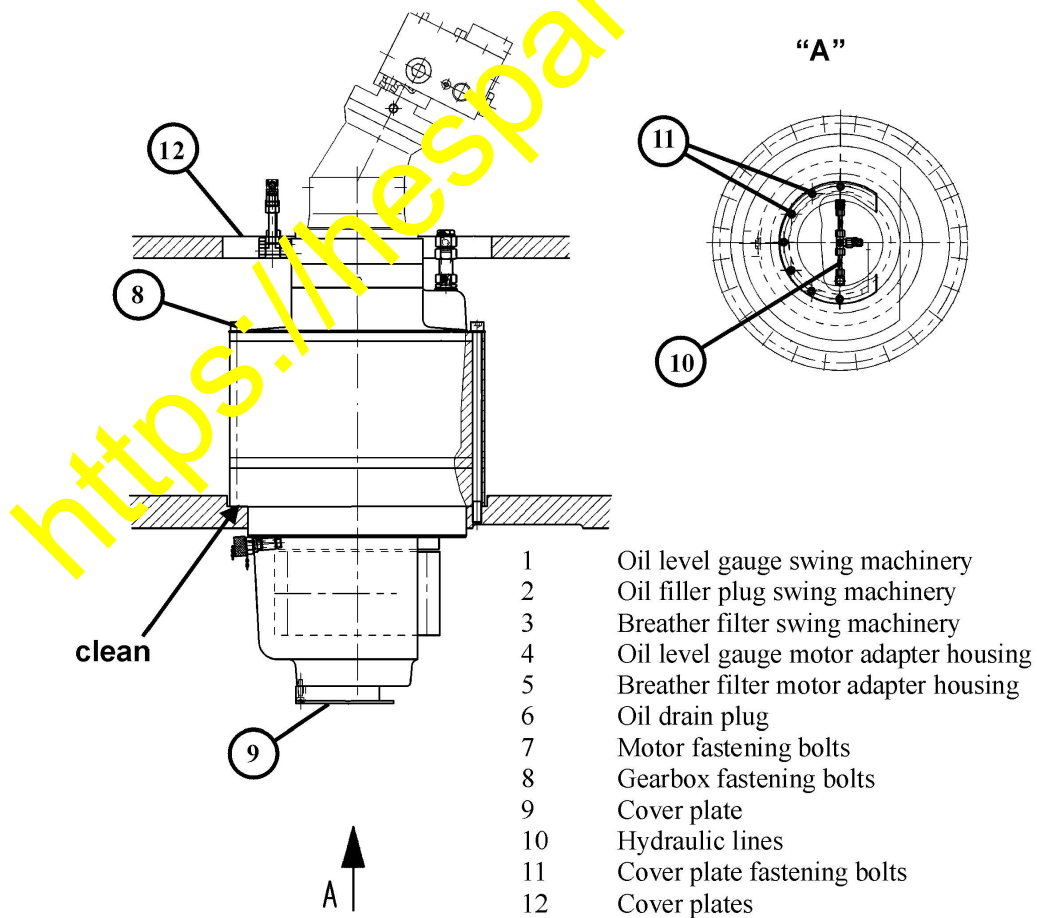
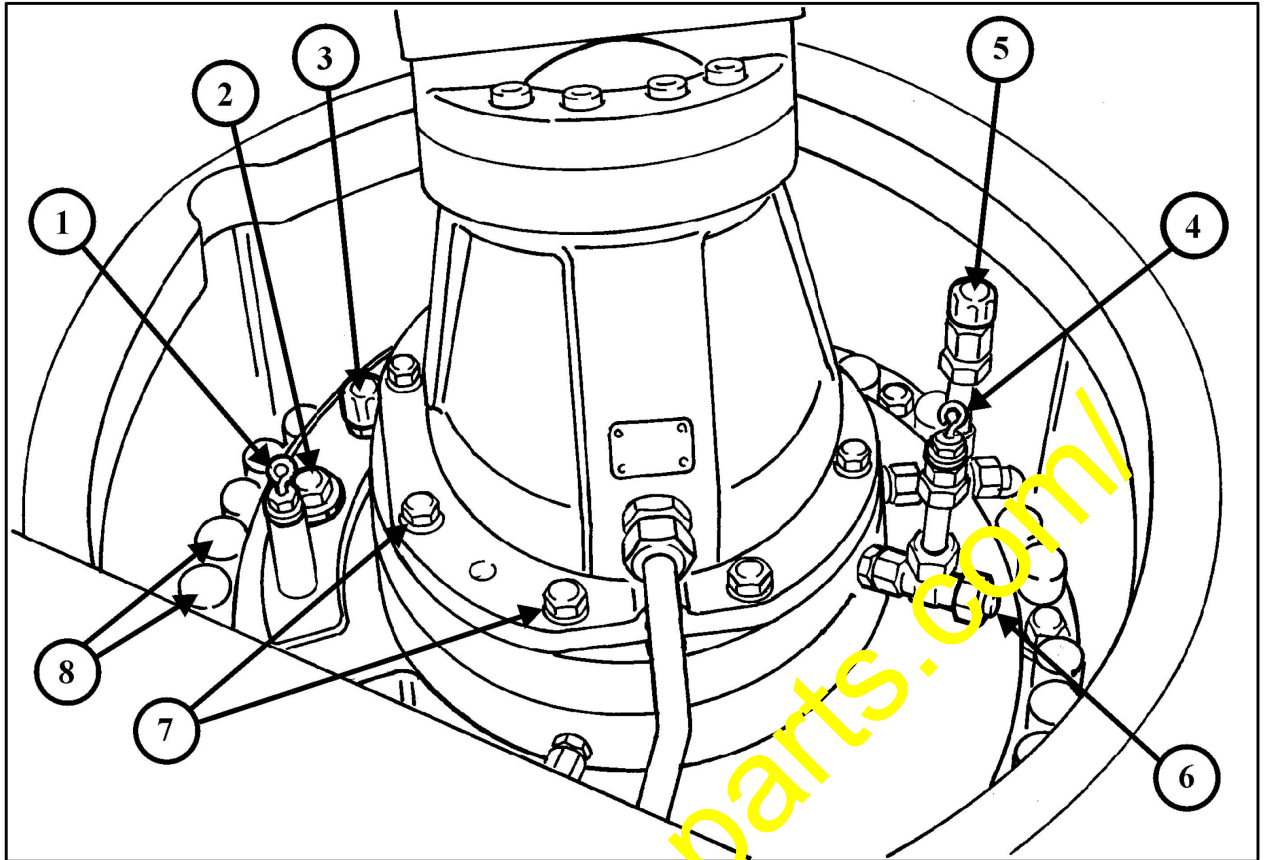
**PURPOSE:** Old design is no longer available

**APPLICATION:** H255S Hydraulic Shovel, S/N 6171  
H455S Hydraulic Shovel, S/N 15005  
PC3000 Hydraulic Shovel, S/N 6174, 6182 and 6193  
PC4000-6 Hydraulic Shovel, S/N 8152  
PC5500 Hydraulic Shovel, S/N 15011

**FAILURE CODE:** 261CFA

**DESCRIPTION:**

1. Remove the bolts (7) M16x50mm at the hydraulic motor
2. Remove the motor with connected hoses and place it beside or if this is not possible disconnect the hydraulic lines and close the ports.
3. Disconnect the lubrication lines below the gearbox.
4. Remove all fastening bolts (8) M24x560mm from the gearbox.
5. Install 2 eye bolts M16 to lift the gearbox assembly.
6. Remove the gearbox from the superstructure frame (weight about 2000kg)
7. Clean the flange area at the superstructure - free of fat, oil, dust and paint.
8. Insert the new gearbox and mount it with the new bolts (8) M24 and the washers to the superstructure (PC3000 #06192/93 the ring item 35 of Modification kit, illustration 1 has to be fitted before)
9. Cover the bolt heads with plugs.
10. Remove the cover (9) below the gearbox and connect the lubrication lines (10). Reinstall the cover (9) with 7 bolts (11).
11. Modify the old breather filters and mount 2 to the new gearbox (3 and 5)
12. Make the oil inlet (2) for the gearbox (only at H455, PC5500 and PC8000). Parts included in the Modification kit.
13. Install the motor with the 8 bolts (7) M16x50.
14. Reconnect all hydraulic lines
15. Fill in oil to the maximum oil level markings:  
Gearbox 2 - about 60 liters;  
Motor chamber (5) about 0.6 liters;  
Oil specification according to Lubrication Manual of the excavator  
Correct the oil quantity values in the Lubrication Manual
16. Install the cover plates (12) (H255, PC3000 and PC4000)



## Modification Kits

### H 255/PC3000 (illust. 1)

Position	Designation	Part-No.	number
	Gear box assy.	917 915 40	1

#### Serial No. to 06191 (Modification Kit No. 792 537 73)

21	union	372 622 40	1
26	cover	921 815 40	1
27	bolt	319 159 99	7
28	washer	504 149 98	7
29	pipe 10x2	215 627 99	0,28 m
33	bolt	517 013 98	24
34	washer	516 920 98	24
60	plug	907 142 40	24
	union	372 956 99	1

#### Lubrication lines

	hose	635 584 40	300mm
	collet	635 588 40	2
	pipe socket	635 586 40	2
	union	372 399 99	1

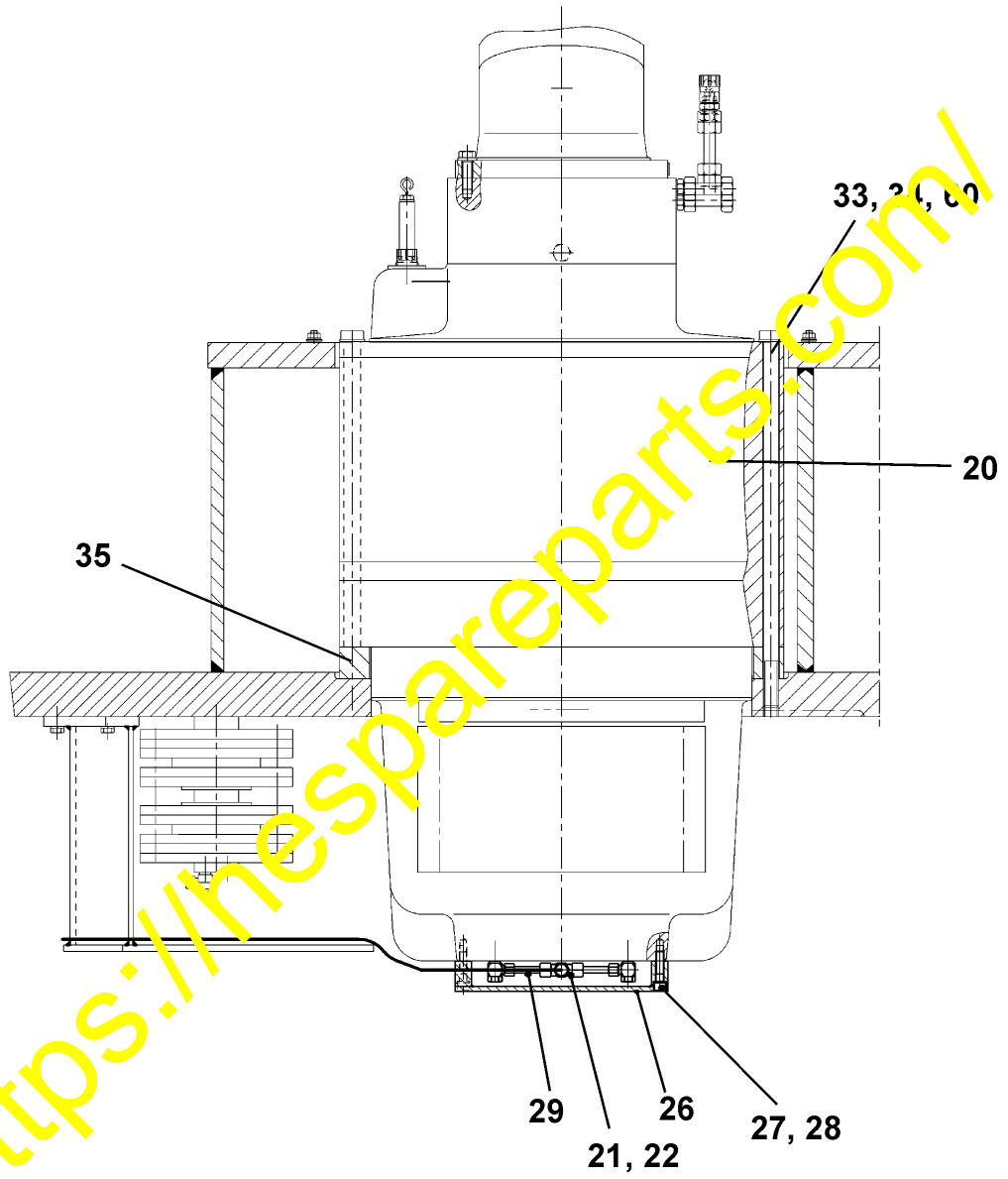
#### Serial No. 06192 and 06193 (Modification kit No. 792 538 73)

Position	Designation	Part-No.	number
21	union	372 622 40	1
26	cover	921 815 40	1
27	bolt	319 159 99	7
28	washer	504 149 98	7
29	Pipe 10x2	215 627 99	0,28 m
33	bolt	517 013 98	34
34	washer	516 920 98	34
35	ring	919 982 40	1
60	plug	907 142 40	34
	union	372 956 99	1

#### Lubrication lines

	hose	635 584 40	300mm
	collet	635 588 40	2
	pipe socket	635 586 40	2
	union	372 399 99	1

Illustration 1 - H255/PC3000



**PC4000****1. Right hand gear box (see illustration 922 576 40)**

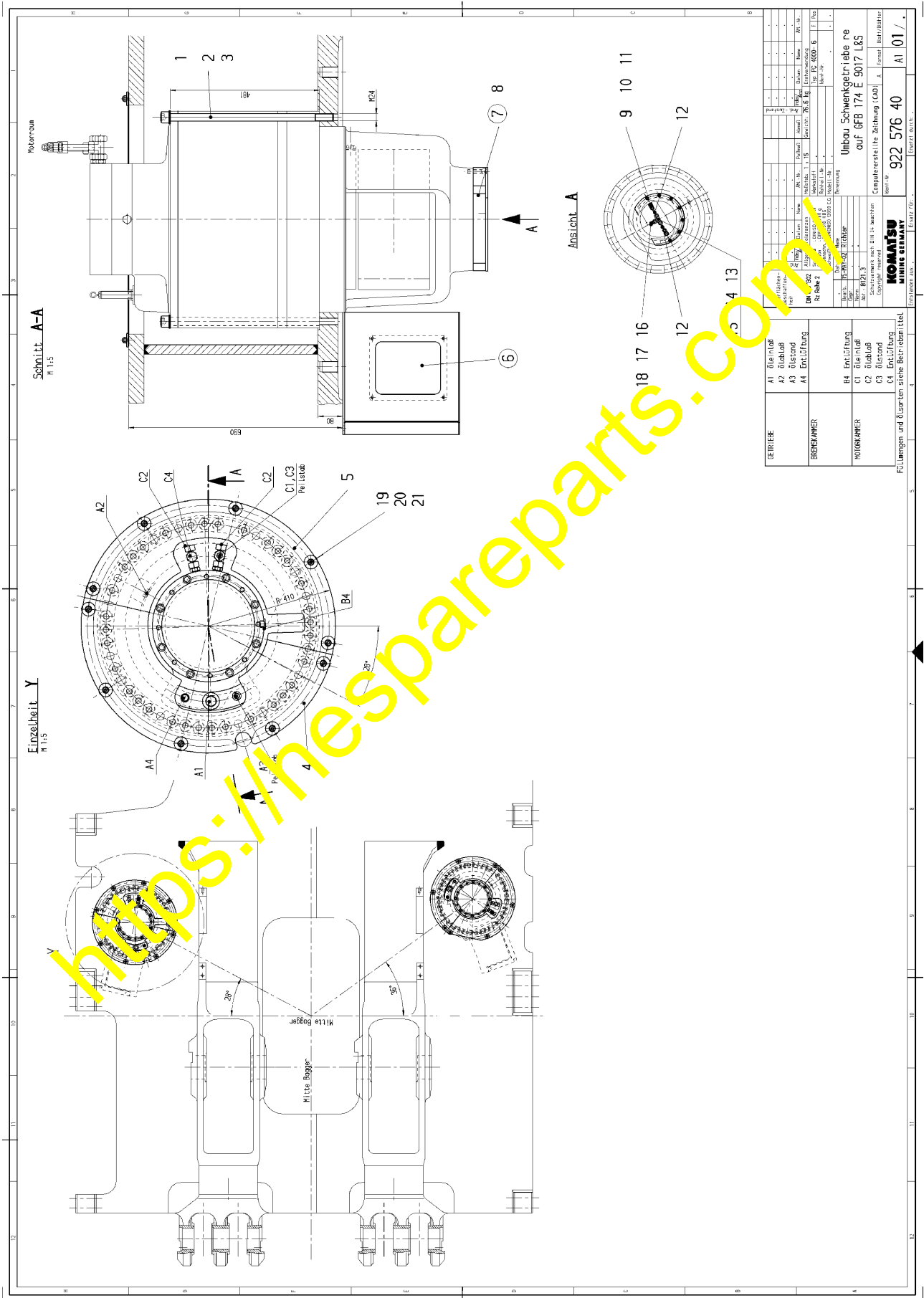
Position	Designation	Part-No.	number
	Gear box assy.	917 915 40	1

**Modification kit (right gear box) No. 922 576 40**

1	bolt	516 919 98	24
2	washer	316 213 99	24
3	plug	907 142 40	24
4	plate right	922 586 40	1
5	plate right	922 587 40	1
6	pinion cover	922 578 40	1
7	cover	921 815 40	1
8	bolt	319 159 99	7
9	union	517 073 99	2
10	union nut	371 273 99	2
11	olive	906 316 40	2
12	pipe	215 027 99	0,4 m
13	union	517 074 98	1
14	union nut	371 258 99	2
15	olive	907 227 40	2
16	union	907 228 40	1
17	union nut	371 257 99	1
18	olive	907 080 40	1
19	nut	507 037 98	10
20	washer	340 465 99	10
21	washer	506 129 40	10

<https://thespareparts.com/>

# Illustration 922 576 40 - PC4000 (right gearbox)



SERIE	A1	Einbaubaugruppe	1	2	3	4	5	6	7	8	9	10	11	12	13	14	15	16	17	18	19	20	21
PC4000																							

11 Einbaubaugruppe 12 Ölwanne 13 Ölstand 14 Einbaubaugruppe	B4 Einbaubaugruppe C1 Ölwanne C2 Ölstand C3 Ölstand C4 Einbaubaugruppe	UNIBAU SCHWENKGETRIEBE auf GFB 174 E 9017 L&S nach DIN 15 3600 Copyright reserved	922 576 40 A1 01
--	--	--	---------------------

**PC4000****2. Left hand gear box (see also drawing No. 922 577 40)**

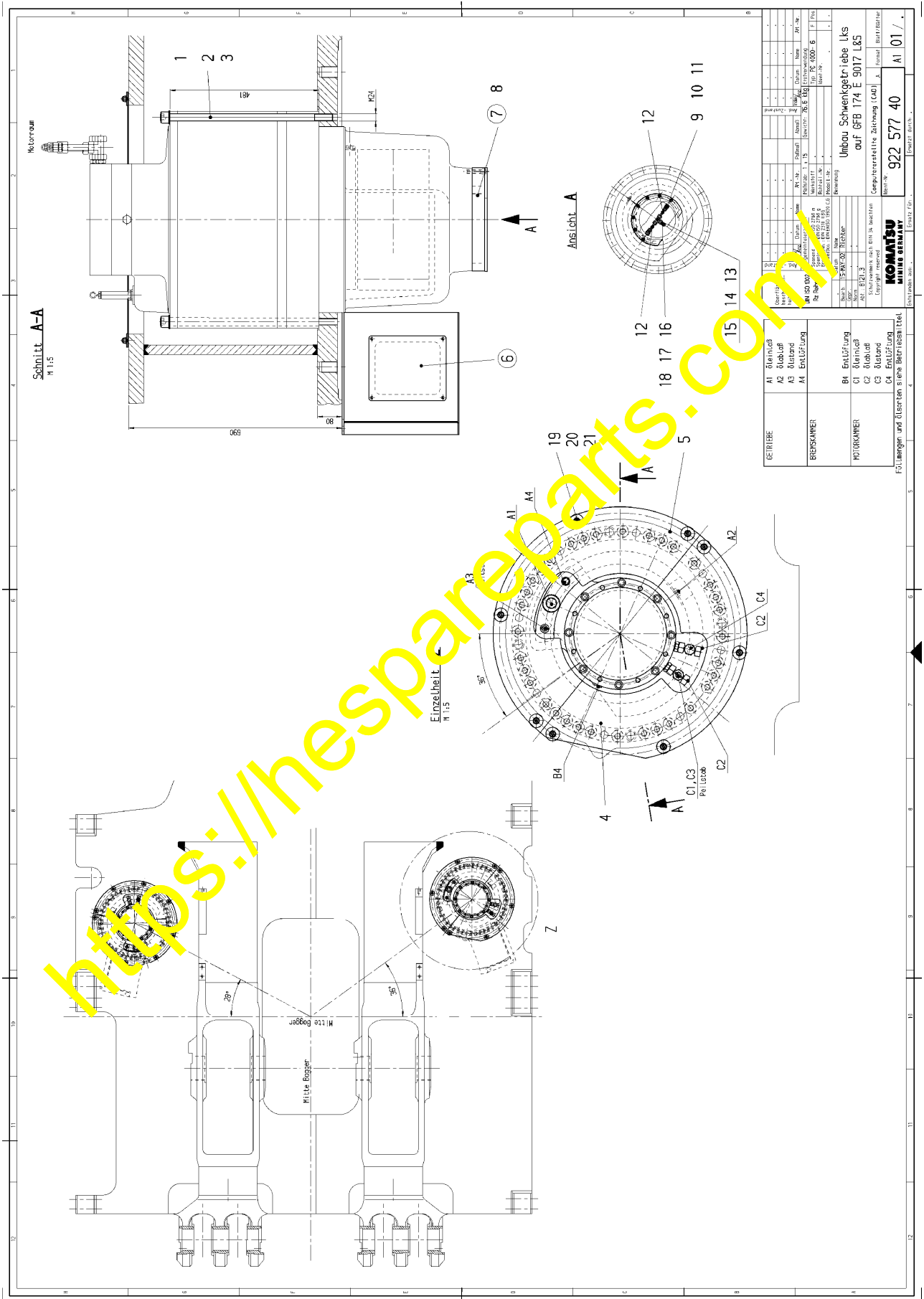
<b>Position</b>	<b>Designation</b>	<b>Part-No.</b>	<b>number</b>
	Gear box assy.	917 915 40	1

**Modification kit (left gear box) No. 922 577 40**

1	bolt	516 919 98	24
2	washer	316 213 99	24
3	plug	907 142 40	24
4	plate left	922 583 40	1
5	plate left	922 584 40	1
6	pinion cover	922 580 40	1
7	cover	921 815 40	1
8	bolt	319 159 99	7
9	union	517 073 99	2
10	union nut	371 273 99	2
11	olive	906 316 40	2
12	pipe	215 027 99	0,4 m
13	union	517 074 98	1
14	union nut	371 258 99	2
15	olive	907 227 40	2
16	union	907 228 40	1
17	union nut	371 257 99	1
18	olive	907 080 40	1
19	nut	507 037 98	10
20	washer	340 465 99	10
21	washer	506 129 40	10

<https://thespareparts.com/>

# Illustration 922 577 40 - PC4000 (left gearbox)



GEWERKE	BEZEICHNUNG	STÜCK	GRÖSSE	ANMERKUNGEN
A1	Ölhub	1		
A2	Ölloch	1		
A3	Ölstand	1		
A4	Öl-Lötlung	1		
B1	Entlüftung	1		
C1	Ölhub	1		
C2	Ölloch	1		
C3	Ölstand	1		
C4	Öl-Lötlung	1		

GEWERKE	BEZEICHNUNG	STÜCK	GRÖSSE	ANMERKUNGEN
B1	Entlüftung	1		
C1	Ölhub	1		
C2	Ölloch	1		
C3	Ölstand	1		
C4	Öl-Lötlung	1		

GEWERKE	BEZEICHNUNG	STÜCK	GRÖSSE	ANMERKUNGEN
A1	Ölhub	1		
A2	Ölloch	1		
A3	Ölstand	1		
A4	Öl-Lötlung	1		
B1	Entlüftung	1		
C1	Ölhub	1		
C2	Ölloch	1		
C3	Ölstand	1		
C4	Öl-Lötlung	1		

GEWERKE	BEZEICHNUNG	STÜCK	GRÖSSE	ANMERKUNGEN
A1	Ölhub	1		
A2	Ölloch	1		
A3	Ölstand	1		
A4	Öl-Lötlung	1		
B1	Entlüftung	1		
C1	Ölhub	1		
C2	Ölloch	1		
C3	Ölstand	1		
C4	Öl-Lötlung	1		



**H 455S; PC5500 (Serial No. 15002 – 15011) / H 655SX (Serial No. 12030)**

(see illustration 911 545 40)

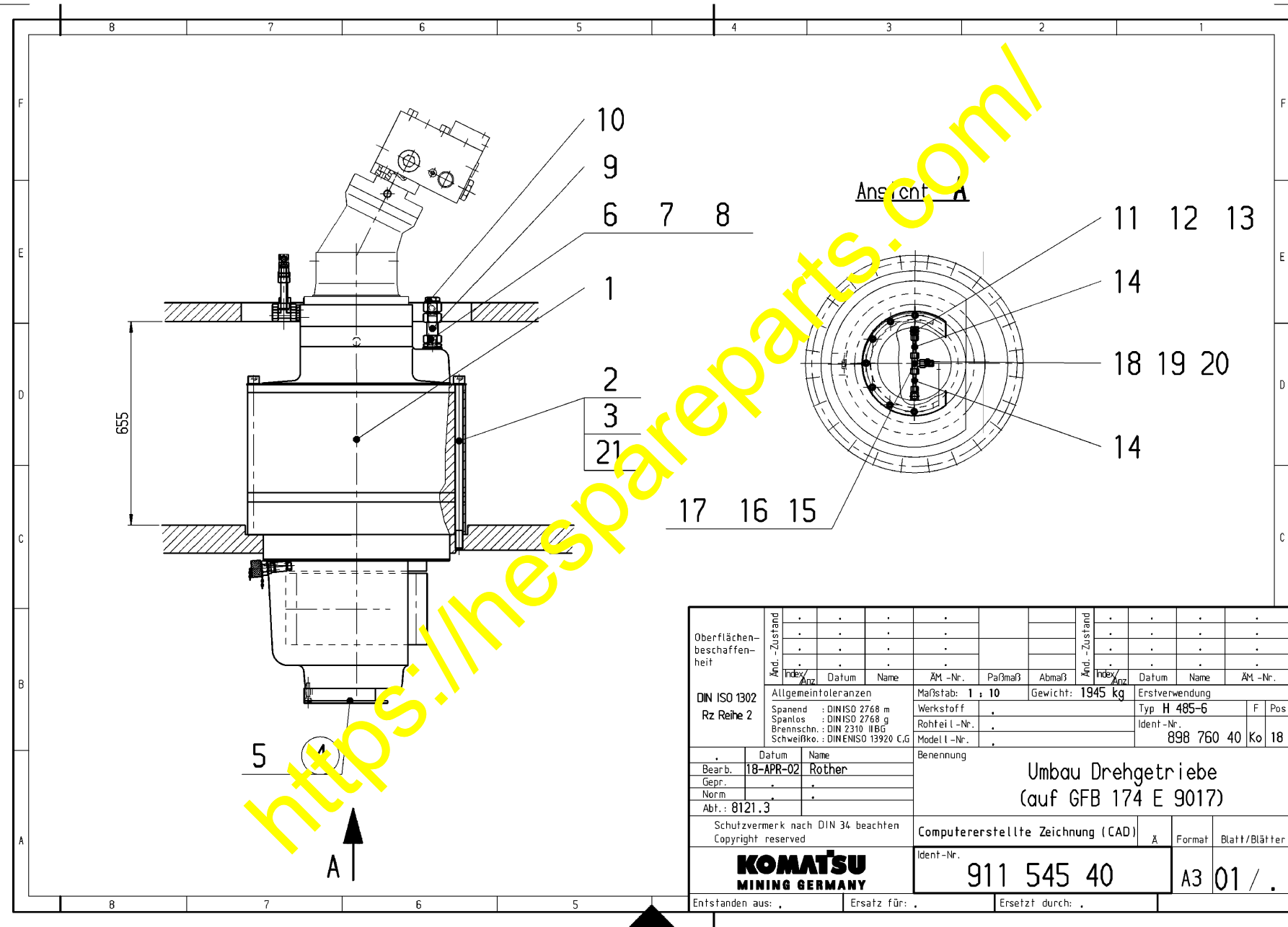
Position	Designation	Part-No.	number
	Gear box assy.	917 915 40	1

**Modification kit No. 911 545 40**

2	bolt	516 919 98	24
3	washer	316 213 99	24
4	cover	921 815 40	1
5	bolt	319 159 99	7
6	socket	374 460 99	1
7	union nut	371 279 99	2
8	olive	906 979 40	2
9	pipe	914 736 40	55mm
10	union	907 131 40	1
11	union	517 073 98	2
12	union nut	371 273 99	2
13	olive	905 546 40	2
14	pipe	215 627 99	0.4 m
15	union	517 074 98	1
16	union nut	371 258 99	2
17	olive	907 227 40	2
18	union	907 228 40	1
19	union nut	371 257 99	1
20	olive	907 080 40	1
21	nut	507 142 40	24

<https://thespareparts.com/>

Illustration 911 545 40 - H 455; PC5500; H 655SX



Oberflächenbeschaffenheit	And.-Zustand				Ausf.-Zustand					
	Ind.-Anz.	Datum	Name	ÄM.-Nr.	Ind.-Anz.	Datum	Name	ÄM.-Nr.		
DIN ISO 1302	Allgemeintoleranzen				Maßstab: 1 : 10	Gewicht: 1945 kg		Erstverwendung		
Rz Reihe 2	Spanend : DIN ISO 2768 m Spanlos : DIN ISO 2768 g Brennschn. : DIN Z310 I/BG Schweißko. : DIN EN ISO 13920 C/G				Werkstoff	Typ H 485-6		F	Pos	
					Rohteil-Nr.	Ident-Nr.		898 760 40 Ko 18		
					Model l-Nr.	Benennung				
	Datum	Name			Umbau Drehgetriebe (auf GFB 174 E 9017)					
	Bearb.	18-APR-02	Rother			Computererstellte Zeichnung (CAD)				
	Gepr.				Ä	Format	Blatt/Blätter			
	Norm				Ident-Nr.		911 545 40			
	Abt.:	8121.3					A3 01 / .			
Schutzvermerk nach DIN 34 beachten Copyright reserved					Entstanden aus:		Ersatz für:		Ersetzt durch:	
<b>KOMATSU</b> MINING GERMANY										

AA02155