

# PARTS & SERVICE NEWS

REF NO.	AA02200
DATE	August 29, 2002

**SUBJECT:** PARKING BRAKE

**PURPOSE:** To reduce parking brake pad wear.

**APPLICATION:** WA600-3LK Wheel Loaders Serial Numbers A53001 to A53030

**FAILURE CODE:** 2F1440

**DESCRIPTION:**

Mud and sand tend to stick to the parking brake section, accelerating brake pad wear. Thus, it becomes necessary to adjust the parking brake clearance more often.

This Parts and Service News introduces a way to reduce brake pad wear, including when the mud and sand stick to the parking brake section.

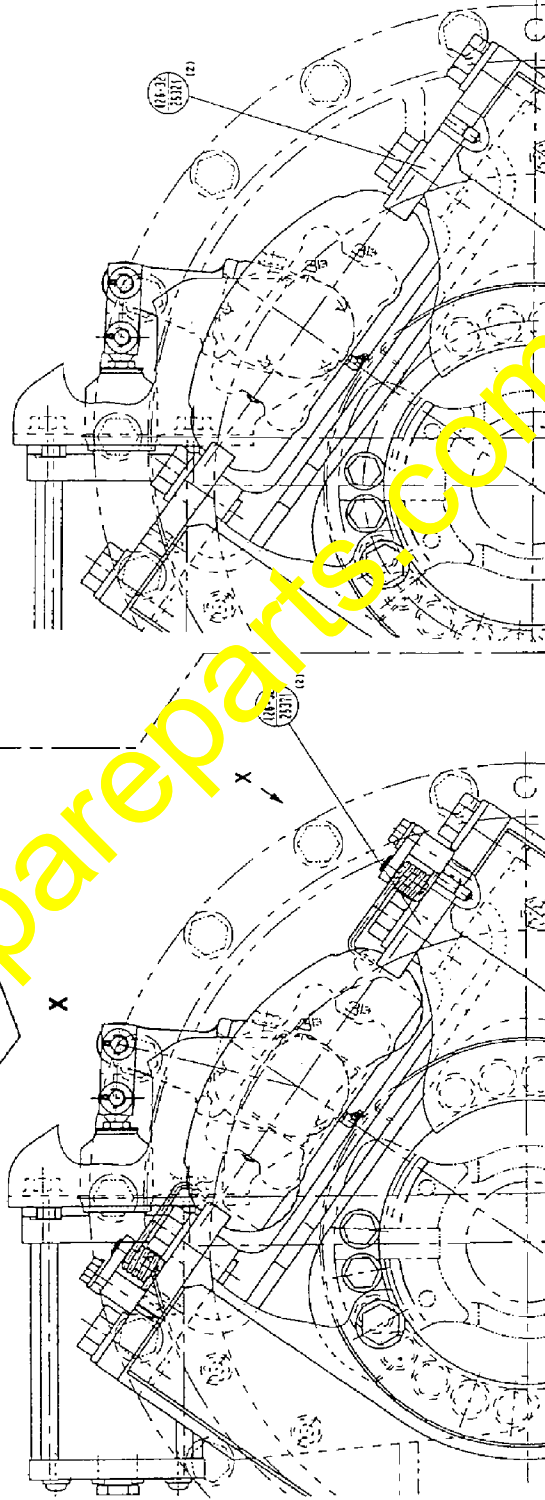
## PARTS LIST

Current P/N	Description	New P/N	Qty.	Note
426-32-25321	Plate	426-32-25371	2	
426-S99-2470	Tube	426-S99-7471	1	Only if equipped with ECSS
426-32-25342	Spring		2	
426-32-25352	Spring		2	
01010-81260	Bolt		4	
01643-31232	Washer		4	
175-21-12180	Pin		4	

Current structure



Contents of the modification  
Supplement return spring to  
the brake pad.



## PROCEDURE

### Removing the parking brake assembly



**WARNING!** Park the machine on a level surface and lower the work equipment to touch the ground securely before inserting wedges under the tires.



**WARNING!** Disconnect the negative battery terminal before starting this procedure.

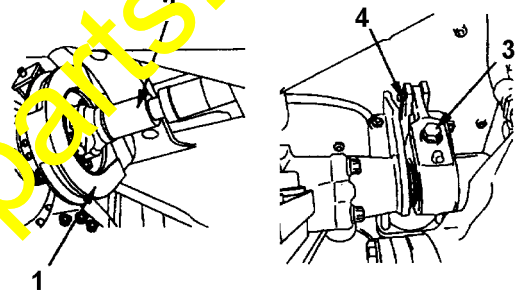
1. Remove the disc plate cover (1).
2. Disconnect the drive shaft (2).



Drive shaft: 20 kg (44 lbs.)

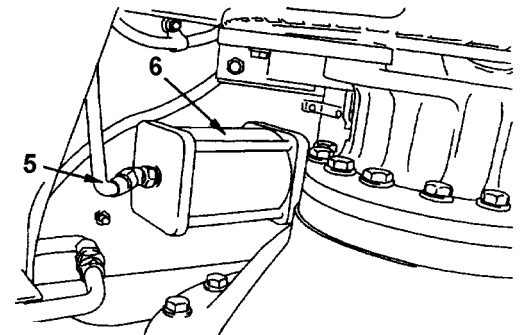
3. Turn the adjust bolt (3) counterclockwise to increase the clearance between the brake pad and brake disc.
4. Pull the connecting pin (4) out and remove it.
5. Disconnect the hose (5).
6. Remove the spring cylinder (6).

※1



CWW03379

※2



CWW03380

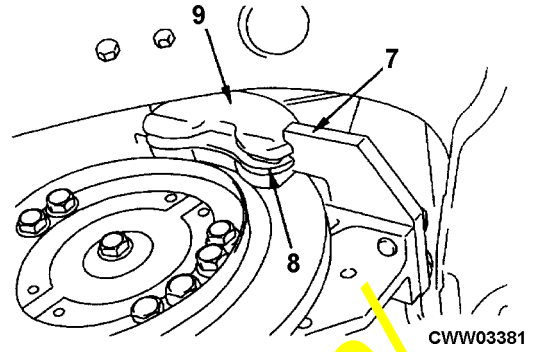
7. Remove the plate (7).



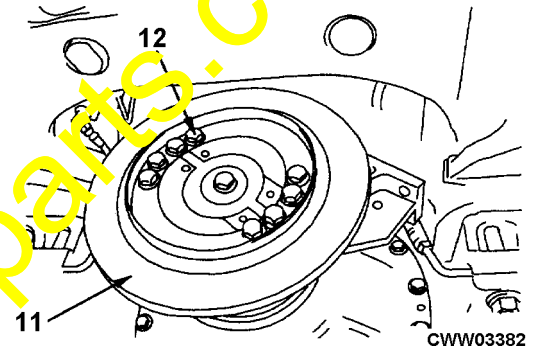
- a. Secure the caliper assembly.
- b. Raise the caliper assembly slightly to remove the two knock pins.

8. Remove the brake pad (8).

9. Remove the caliper assembly (9).



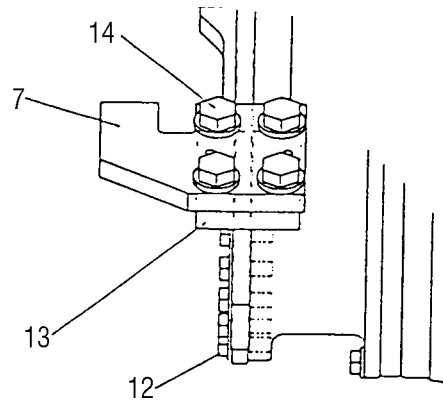
10. After removing the mounting bolts (10), remove the disc (11).



11. Remove the mounting bolts (12) and then the bracket (13).

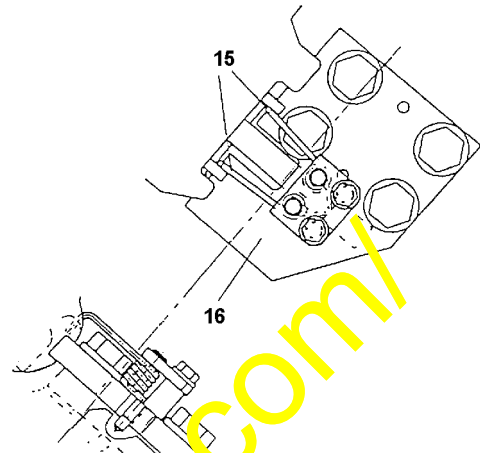



12. After removing the mounting bolts (14), remove the plate (7).




## Installing the parking brake

★ To install the parking brake assembly, reverse the removal procedure. However, instead of installing the plate (7), install the plate (16) with springs (15).





 **N·m** Mounting bolt: 98 - 122 Nm (72 - 90 lbf ft.)

※1  **N·m** Mounting bolt: 157 - 196 Nm (116 - 145 lbf ft.)

※2 ★Adjust the clearance. Refer to the shop manual, chapter "Inspection and Adjustment," and then section "Inspection and Adjustment of Parking Brake."


※3

 Mounting bolt: Apply adhesive (LT-2).


 **N·m** Mounting bolt: 824.0 - 1,030 Nm (602 - 750 lbf ft.)


※4

 Mounting bolt: Apply adhesive (LT-2).

 **N·m** Mounting bolt: 490.0 - 608.0 Nm (361 - 448 lbf ft.)

※5

 Mounting bolt: Apply adhesive (LT-2).

 **N·m** Mounting bolt: 245 - 309 Nm (181 - 228 lbf ft.)