

PARTS & SERVICE NEWS

REF NO.	AA02219
DATE	Oct. 8, 2002

Page 1 of 2

SUBJECT: TIME RELAY FOR THE ENGINE PRELUB SYSTEM

PURPOSE: Introduction of an improved time relay

APPLICATION: H185 Hydraulic Shovel S/N 5026, 5028, 5037, 5039, 5042, 5059, 5064, 5070
 H185S Hydraulic Shovel S/N 6081, 6085, 6091, 6098, 6122
 H255S Hydraulic Shovel S/N 6171
 H285S Hydraulic Shovel S/N 78076, 78083, 78097, 78104, 78110, 78111, 78113, 78120, 78124, 78134, 78139
 H455S Hydraulic Shovel S/N 15005
 PC3000 Hydraulic Excavator S/N 6174, 6182, 6193, 6194
 PC5500 Hydraulic Excavator S/N 15011

FAILURE CODE: 8D70MA

DESCRIPTION:

Present time relay: P/N 765 579 73

Improved time relay: P/N 792 585 73

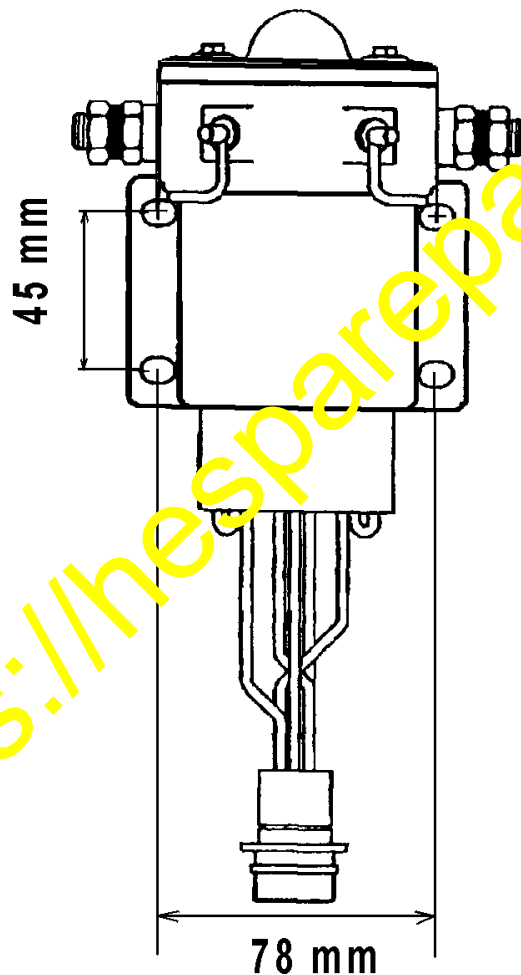
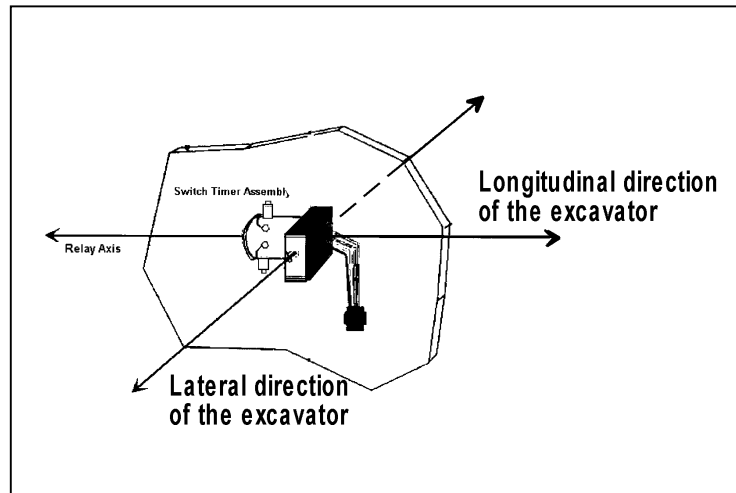
For the first replacement the following parts are required:

Part No.	Number	Designation
792 585 73	1	Time Relay
655 642 40	4	Circular bearing (Silent block)
332 080 99	8	Nut

PROCEDURE

- Disconnect and remove the old time relay.
- Mark out the 4 new holes (ø 8mm) and drill it.

The mounting technique of the relay should protect the unit from shock, vibration, excessive temperatures and direct high pressure sprays.



- Install the new relay elastically by means of the circular bearings (silent blocks) and the nuts.
- Widen up the 6 mm dia hole at the cable lag to approx. 8 mm with a drift mandrel **DO NOT DRILL.**
- Connect the new relay with the existing cable.