

# PARTS & SERVICE NEWS

REF NO.	AA02241
DATE	Nov. 11, 2002

**SUBJECT:** IMPROVED NEEDLE BEARING AND PLANETARY GEAR SHAFT IN 2ND CLUTCH PACK IN TRANSMISSION

**PURPOSE:** To introduce improved needle bearing and planetary gear shaft with increased reliability for use in the 2nd clutch pack of transmission

**APPLICATION:** WA500-3 Wheel Loaders, S/N 50001 thru 51011  
 (Transmission assembly S/N 1001 thru 011430)  
 WA500-3L Wheel Loaders, S/N A70001 thru A70832  
 WA500-3LK Wheel Loaders, S/N A71001 thru A781041  
 A71043 thru A71056; A71058 thru A71062; A71066, A71067, A71073, A71078, A71079

**FAILURE CODE:** 15LFZ9

**DESCRIPTION:**

This **PARTS & SERVICE NEWS** introduces an improved needle bearing and planetary gear shaft with increased reliability for use in the 2nd clutch pack of transmission.

Applicable Units	Transmission Assembly	WA500-3 MACHINE SERIAL NUMBER
	425-15-21001	#50001 thru 50434
	425-15-21002	#50435 thru 50751
	425-15-21003	#50742 thru 51011

List of Parts

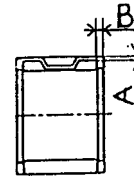
Part No.	Part Name	Q'ty	Remarks
425-15-29140 (712-85-15140)	Bearing (Bearing)	3 (3)	
425-15-02141 (425-15-02140)	Shaft Ass'y (Shaft Ass'y)	3 (3)	
145-14-11320 (145-14-11320)	Plug (Plug)	3 (3)	This is a component part of the shaft ass'y and remains the same

3. Contents of the modification

① Reinforcement of the needle bearing

- Plate thickness of a retainer have been increased so that the retainer gets stronger against vibrations.
- Heat treatment of needles have been changed for longer life.

	New thickness	Current thickness
Dimension A:	1.05	← 0.8
Dimension B:	2.1	← 0.8



② Reinforcement of the planetary gear shaft

- Heat treatment of the planetary gear shaft has been changed for longer life.

Note) Longer life of the planetary gear assembly cannot be obtained unless both the needle bearing and the planetary gear shaft are replaced together. (If either one of them is replaced independently, the life of the planetary gear assembly would be even shortened.)

4. Discrimination between the improved and current parts (Refer to the figure shown below.)

① Discrimination between the improved and current needle bearings

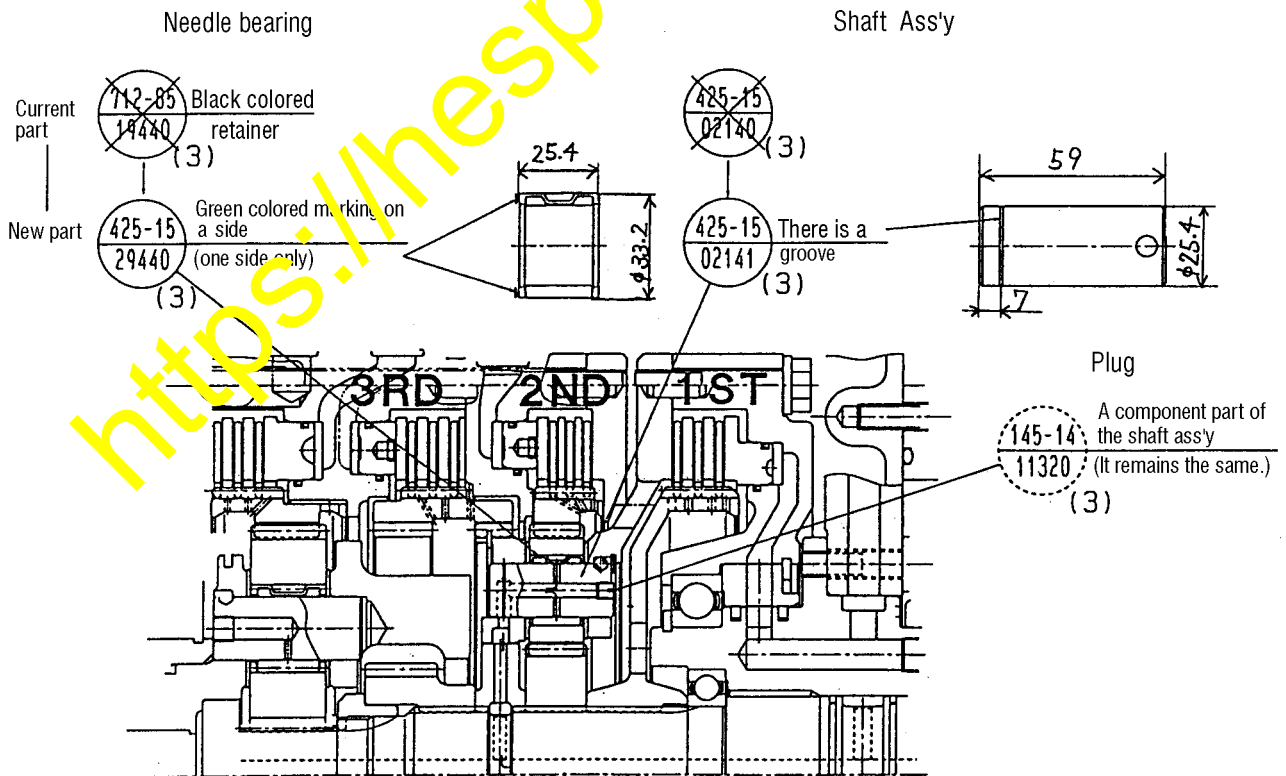
(Current needle bearing) Color of the retainer surface is black.

(Improved needle bearing) Color of the retainer surface is silver + a mark with green color on a side (one side only).

② Discrimination between the improved and current planetary gear shaft

(Current planetary gear shaft) There is no groove

(New planetary shaft) There is a groove (One groove only)



5. Replacement procedures

Replace those parts consulting the section "Disassembly and assembly of transmission" in the Shop Manual.