

PARTS & SERVICE NEWS

REF NO.	AA03095
DATE	June 11, 2003

SUBJECT: ELECTRIC DRIVE AIR INLET DUCT CRACKING ON 930E

PURPOSE: Introduce a kit for improved air inlet duct mounting and prevention of cracks.

APPLICATION: Komatsu Electric Drive Dump Trucks:
 930E-1: 32604 thru 32816, A30019, A30026 thru A30120;
 930E-2: A30098, A30100, A30121 thru A30170, A30172 thru A30182,
 A30184 thru A30293, A30295 thru A30303

FAILURE CODE: 0850HA

DESCRIPTION: Inlet Duct Reinforcement Kit (XK0225)

Some trucks in operation may experience cracking at the air inlet duct for the electric drive system. The cracking usually begins at the corners of the mounting pads on the sides of the inlet duct. The cracks are caused by misalignment between the control cabinet mounting plate and the inlet duct mounting pads. Inlet duct reinforcement kit (XK0225) provides a new mounting design that allows for three-dimensional adjustments. An additional backer plate is also provided in the kit for increasing the size of the weld footprint on the sides of the duct. Refer to Table 1 for a complete listing of the contents of the kit. A drawing (Figure 1) is included in the kit and provides instructions and welding specifications for the installation of kit components.

Follow the guidelines that are outlined in Parts and Service News, "Field Welding For Assembly Or Repair" (AA00046C). For additional welding guidelines, refer to Welding I (SEBF14001) and Welding II (SEBF15002).

Refer to Special Precautions For Working On A 930E Truck in the Operation and Maintenance Manual or in the Service Manual for more information about welding on this machine.

CAUTION

When welding during the installation of this kit, a possibility of creating sparks inside the control cabinet exists. Install welding blankets inside the control cabinet to cover and protect electrical components. Failure to do so may result in damage to the electric drive system.

TABLE 1. INLET DUCT REINFORCEMENT KIT (XK0225)			
Item Number (Figure 1)	Part Number	Description	Quantity
-	EK7040	Inlet Duct Reinforcement Kit Drawing	1
1	EK7028	Plate	2
2	ED4935	Tapped Pad	2
3	MM0605	Capscrew	4
4	WA4727	Hardened Flatwasher	4
5	EK7043	Bent Plate	2
6	C1636	Capscrew	2
7	WA4729	Hardened Flatwasher	2
8	EK7045	Washer	2
9	WA2591	Rubber Mount	2
10	EK7044	Washer	4
11	WA4719	Flatwasher	2
12	TG9226	Locknut	2
13	EK7042	Mount Plate	2
14	EK7041	Base Plate	2

70974

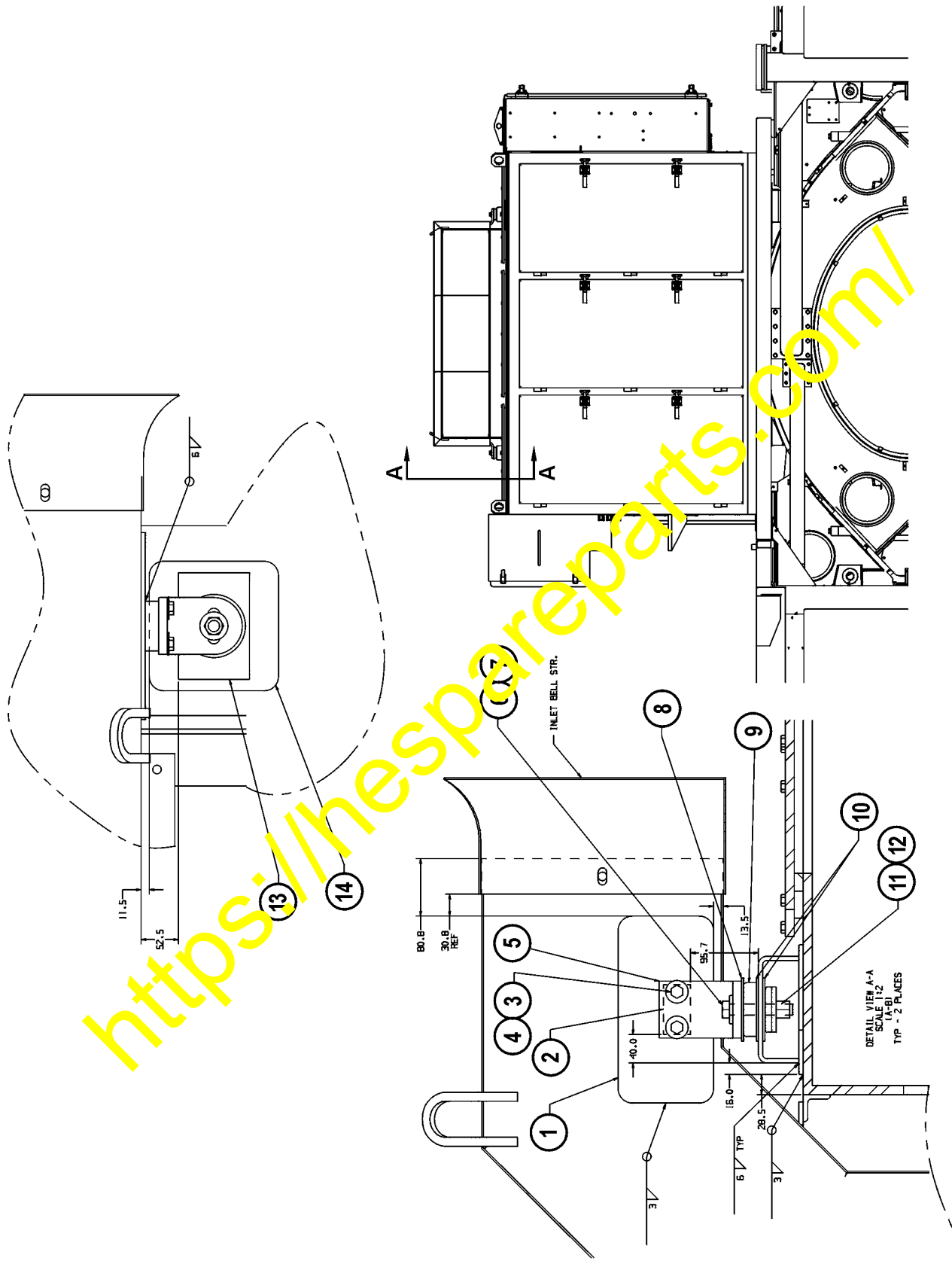


FIGURE 1. INLET DUCT REINFORCEMENT KIT DRAWING (EK7040)