

# PARTS & SERVICE NEWS

REF NO. AA03137

DATE October 7, 2003

(C)

Page 1 of 6

**SUBJECT:** QUICK COUPLER CONNECTORS FOR AIR CONDITIONER PIPING

**PURPOSE:** Quick coupler connectors installed in the air conditioner piping allows easier removal of cab from unit without discharging the air conditioner gas.

**APPLICATION:** HM400-1 Dump Truck Serial Number 1001 and UP

**FAILURE CODE:** 875KZ9

**DESCRIPTION:** When quick coupler connectors are installed in the air conditioner piping, discharging the air conditioner gas is not necessary for cab removal from the machine.

## MACHINE PREPARATION

1. Park the machine on a flat level surface; lower the work equipment to the ground. Shut off the engine and cycle the controls to remove any residual hydraulic pressure from the work equipment circuits. Turn the parking brake switch on and block the tires.
2. Remove the key from the start switch until the repairs are complete. Place a tag on the steering controls advising: "This machine is being repaired. It should not be started or moved for any reason until the tag is removed by the person doing the repairs."



**WARNING!** Observe all safety and precautionary standards as dictated by the environment and work conditions under which the equipment will be inspected, reworked and repaired. consult the "Shop Manual" and "Operator's and Maintenance Manual" and your "Komatsu district service manager" with any/all questions regarding safety.

## Remark

*These instructions are intended to supplement the service data contained in the appropriate "Shop Manual". Always refer to that manual for Removal, Installation, Disassembly and Reassembly instructions when not contained in this document.*

**Remove and discard the following parts:** (See parts book mark-up pages)

Part Number	Part Name	Qty
56B-07-13120	Hose assembly	1
56B-07-13110	Hose assembly	1

**Order and install the following parts:**

Part Number	Part Name	Qty
17A-911-1531	Connector	1
17A-911-1541	Connector	1
17A-911-1551	Connector	1
17A-911-1561	Connector	1
21T-979-6150	Hose assembly	1
154-911-1150	Hose assembly	1
56B-50-A0080	Bracket	1

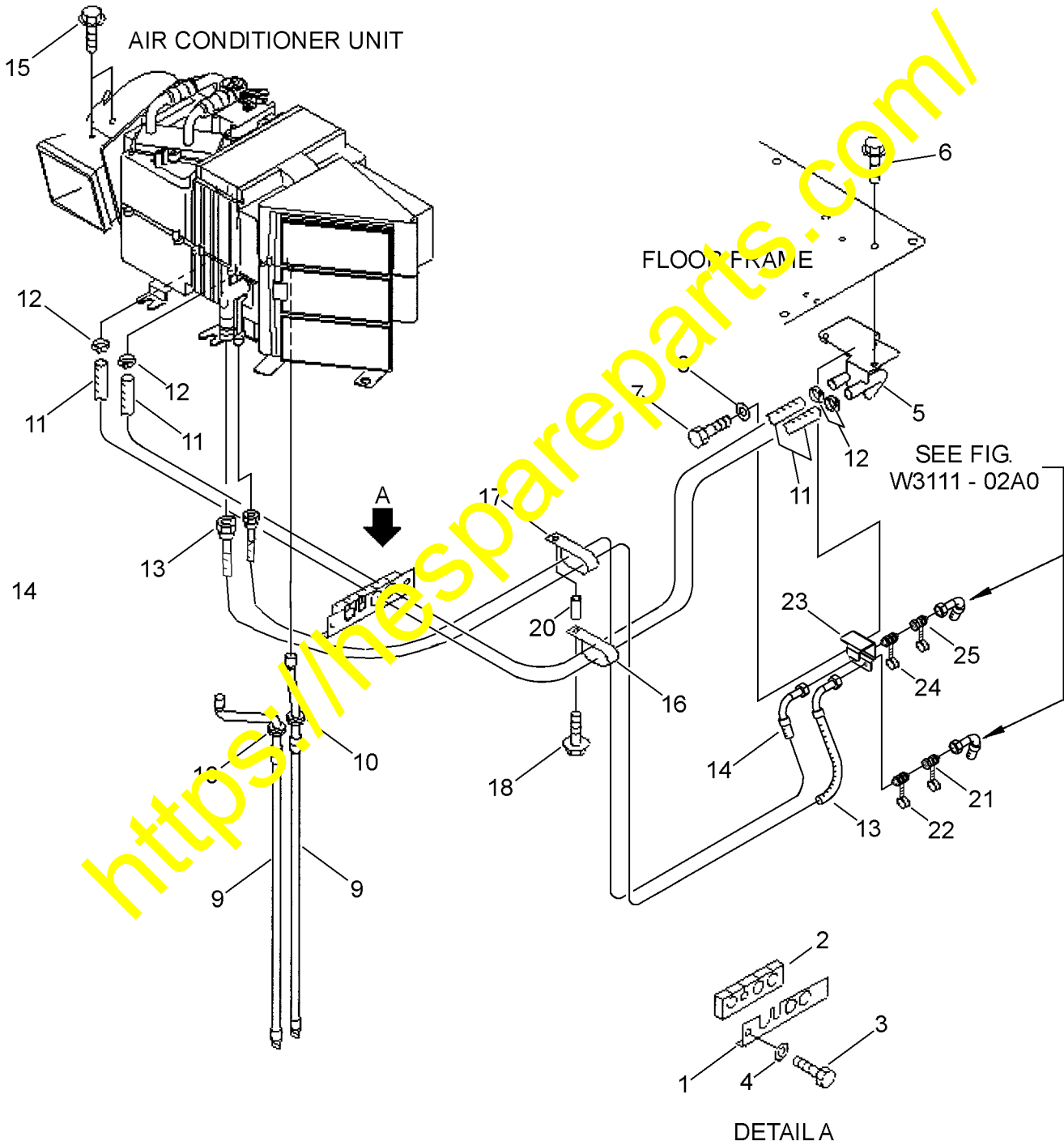
#### **PARTS BOOK INFORMATION**

The following art work and parts list should be used to supplement your parts book.

<https://hespareparts.com/>

K0710-04A1

AIR CONDITIONER HM400-1  
PIPING



**K0710-04A1**

**AIR CONDITIONER HM400-1  
PIPING**

Item	Part Number	Description	Qty	Ref	Serial No.
1	56B-07-12780	BRACKET . . . . .	1		1001-
2	56B-07-12790	PLATE . . . . .	1		1001-
3	01010-81016	BOLT . . . . .	2		1001-
4	01643-31032	WASHER . . . . .	2		1001-
5	56B-07-13172	BRACKET . . . . .	1		1001-
6	01435-01025	BOLT . . . . .	2		1001-
7	01010-81025	BOLT . . . . .	1		1001-
8	01643-31032	WASHER . . . . .	1		1001-
9	567-07-73380	HOSE, DRAIN . . . . .	2		1001-
10	08037-01610	GROMMET . . . . .	2		1001-
11	09483-10510	HOSE . . . . .	2		1001-
12	07280-02523	CLAMP . . . . .	4		1001-
13	154-911-1150	HOSE . . . . .	1		1001-
	20Y-979-3130	.O-RING . . . . .	1		1001-
14	21T-979-6150	HOSE . . . . .	1		1001-
	20Y-979-3150	.O-RING . . . . .	1		1001-
15	01435-01016	BOLT . . . . .	2		1001-
16	04435-52511	CLIP . . . . .	1		1001-
17	04435-52110	CLIP . . . . .	1		1001-
18	01435-01055	BOLT . . . . .	1		1001-
19		NOT USED			
20	22T-61-11360	SPACER . . . . .	1		1001-
21	17A-911-1541	CONNECTOR . . . . .	1		1001-
22	17A-911-1551	CONNECTOR . . . . .	1		1001-
23	56B-07-13080	BRACKET . . . . .	1		1001-
24	17A-911-1551	CONNECTOR . . . . .	1		1001-
25	17A-911-1561	CONNECTOR . . . . .	1		1001-

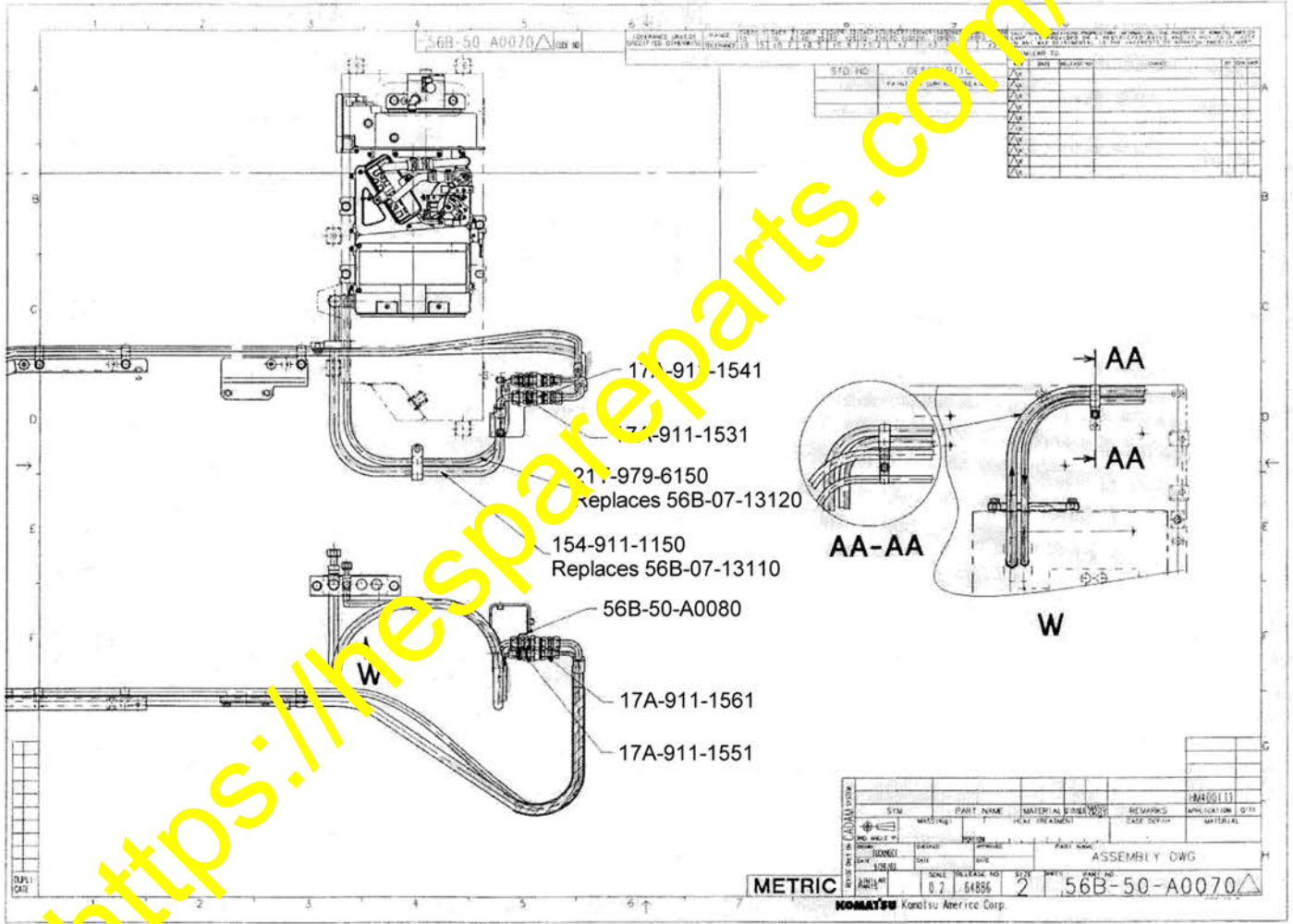
**SHOP MANUAL DATA**

1. Park the machine on a flat level surface; lower the work equipment to the ground. Shut off the engine and cycle the controls to remove any residual hydraulic pressure from the work equipment circuits. Turn the parking brake switch on and block the tires.
2. Remove the key from the start switch until the repairs are complete. Place a tag on the steering controls advising: "This machine is being repaired. It should not be started or moved for any reason until the tag is removed by the person doing the repairs."



**WARNING!** Observe all safety and precautionary standards as dictated by the environment and work conditions under which the equipment will be inspected, reworked and repaired. consult the "Shop Manual" and "Operator's and Maintenance Manual" and your "Komatsu district service manager" with any/all questions regarding safety.

3. Disconnect the cable from the negative (-) terminal of the battery.
4. Discharge the air conditioner gas from the system.
5. Tilt cab up (see shop manual for additional information) and support in place.
6. Remove hose assembly 56B-07-13110 and 56B-07-13120.
7. Install straight end of hose assembly 154-911-1150 and 21T-979-6150 at air conditioner unit.
8. Assemble bracket 56B-50-A0080 to bracket 56B-07-13172 reusing bolt (01010-81025) and washer (01643-31032).
9. Assemble quick coupler connectors 17A-911-1531, 17A-911-1541, 17A-911-1551 and 17A-911-1561 as shown on assembly drawing 56B-50-A0070.
10. Assemble 90 degree end of hose assembly 56B-07-13132 and 56B-07-13220 to end of quick coupler connectors with orientation as shown on drawing 56B-50-A0070.
11. Tilt cab back down (operating position).
12. Purge the air conditioning system.
13. Recharge the system with air conditioning gas.



56B-50-A0070