

PARTS & SERVICE NEWS

REF NO.

AA03138

DATE

October 7, 2003

(C)

Page 1 of 8

- SUBJECT:** GREASE FITTING PROTECTION ON REAR SUSPENSION PINS FOR USE IN SEVERE APPLICATION.
- PURPOSE:** The grease fittings are countersunk in the pins for protection from being sheared off.
- APPLICATION:** HM400-1 Dump Truck Serial Number 1001 and up
- FAILURE CODE:** 5A6ANY
- DESCRIPTION:** When installed the countersunk grease fittings will offer more protection from damage in a severe application.

Remark

The grease fitting protection was developed for customers who operate in severe application.

MACHINE PREPARATION:

1. Park the machine on a flat level surface; lower the work equipment to the ground. Shut off the engine and cycle the controls to remove any residual hydraulic pressure from the work equipment circuits. Turn the parking brake switch on and block the tires.
2. Remove the key from the start switch until the repairs are complete. Place a tag on the steering controls advising: "This machine is being repaired. It should not be started or moved for any reason until the tag is removed by the person doing the repairs."



WARNING! Observe all safety and precautionary standards as dictated by the environment and work conditions under which the equipment will be inspected, reworked and repaired. consult the "Shop Manual" and "Operator's and Maintenance Manual" and your Komatsu district service manager with any/all questions regarding safety.

Remark

These instructions are intended to supplement the service data contained in the appropriate "Shop Manual". Always refer to that manual for Removal, Installation, Disassembly and Reassembly instructions when not contained in this document.

Remove and discard the following parts:

Part Number	Parts Name	Qty
07020-0090	Grease fitting	4
562-95-13150	Nipple	3

Order and install the following parts:

Part Number	Parts Name	Qty
07020-00000	Grease fitting	4

<https://hespareparts.com/>

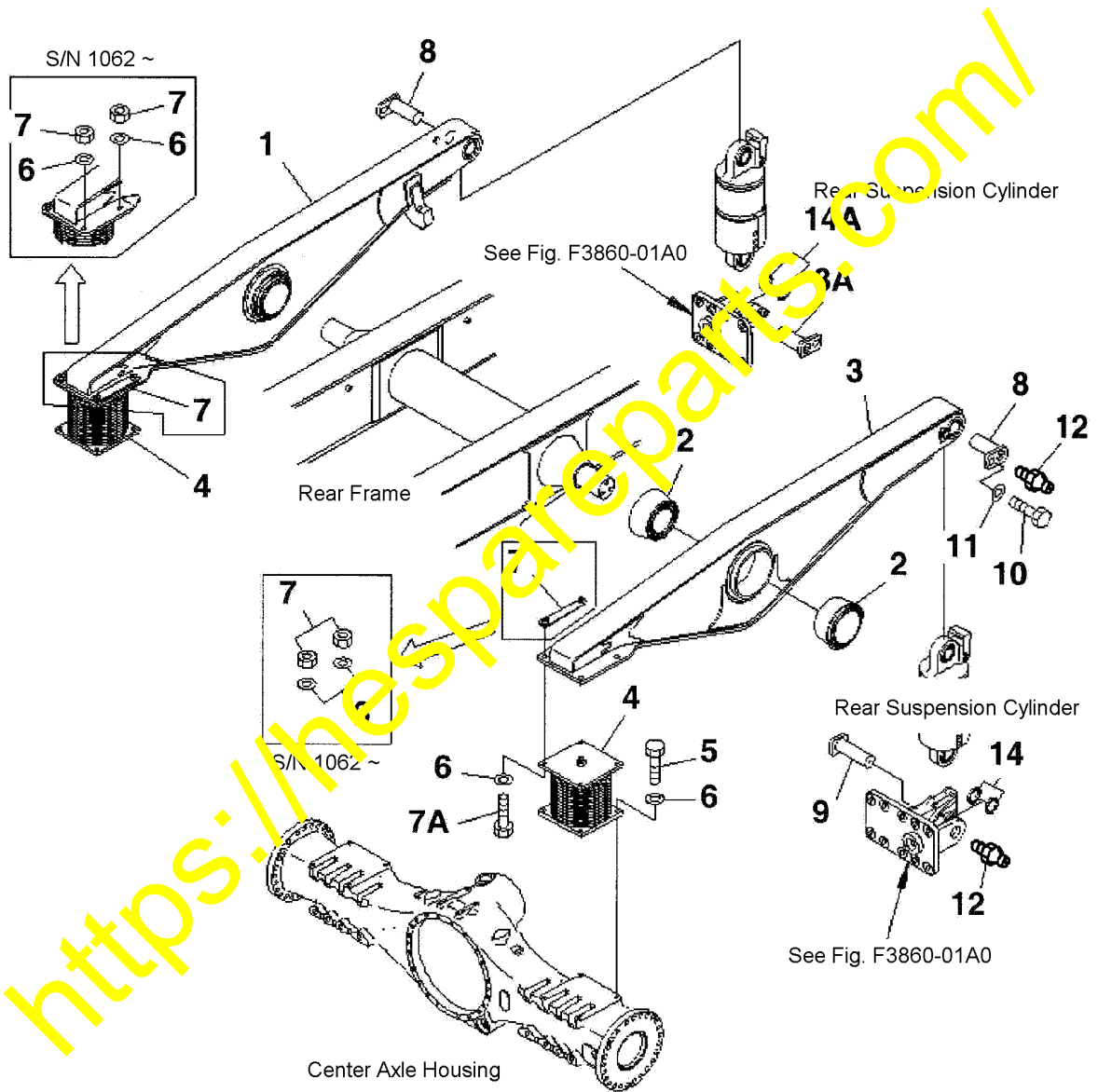
PARTS BOOK INFORMATION

The following artwork and parts list should be used to supplement your parts book.

S3300-01A1

EQUALIZER BAR AND MOUNTING PARTS

HM400-1 S/N 1001 AND UP



CM002758

S3300-01A1

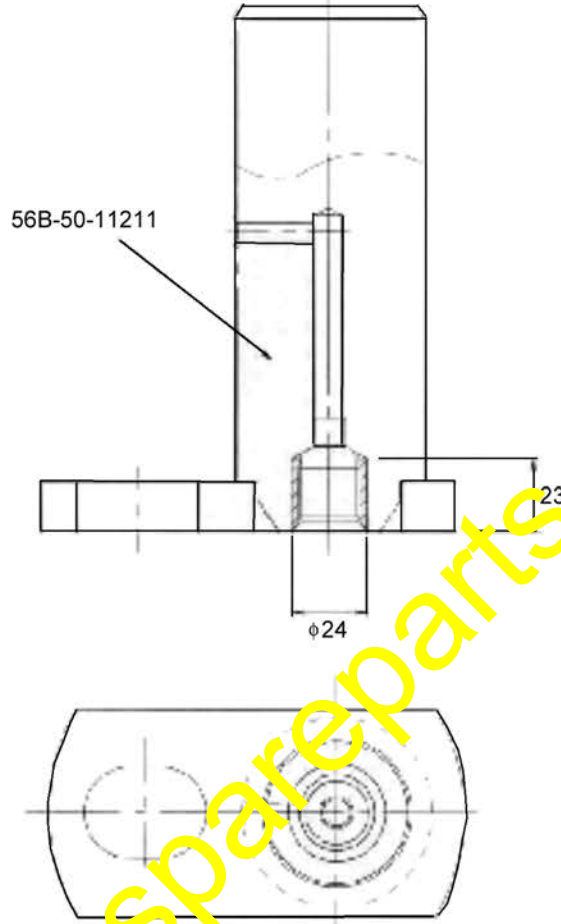
EQUALIZER BAR AND MOUNTING PARTS

HM400-1 S/N 1001 AND UP

Item	Part No.	Description	Qty	Ref	Serial number
1	56B-50-12530	BAR, RH EQUALIZER	1		1001 -
2	56B-50-12320	BEARING	4		1001 -
3	56B-50-12520	BAR, LH EQUALIZER	1		1001 -
4	56B-50-12312	SPRING.	2		1001 -
5	01010-81650	BOLT.	8		1001 -
6	01643-31645	WASHER.	24		1061 -
	01643-31645	WASHER.	16		1001 - 1061
7	01580-11613	NUT	8		1062 -
	56B-50-12180	PLATE	4		1001 - 1061
7A	01010-81655	BOLT.	8		1001 -
8	56B-50-A0050	PIN (REWORKED).	2		1020 -
	56B-50-11210	PIN	3		1001 - 1019
8A	56B-50-A0050	PIN (REWORKED).	1		1020 -
	56B-50-11210	PIN	1		1001 - 1019
9	56B-50-A0060	PIN (REWORKED).	1		1001 -
10	01010-81425	BOLT.	3		1001 -
11	569-40-61710	WASHER.	3		1001 -
12	07020-00000	FITTING (REF/SE)	4		1001 -
13		NOT USED			
14	56B-50-11240	SPACER.	4		1001 -
14A	56B-50-11240	SPACER.	4		1001 -

<https://mespareparts.com/>

METRIC

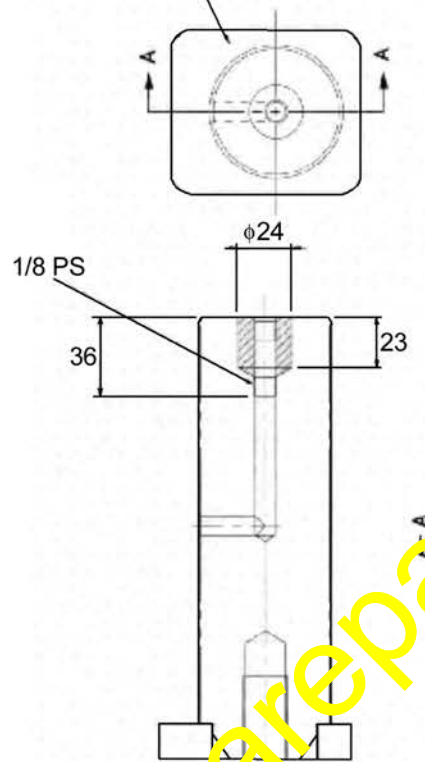


Rework pin number 56B-50-11211 by removing material shown in cross section to dimensions shown above

CM002755

56C-50-12570

METRIC



1. Rework pin number 56C-50-12570 by removing material shown in cross section to dimensions shown above.
2. Drill 1/8 PS to depth shown above.

CM002756

SHOP MANUAL DATA

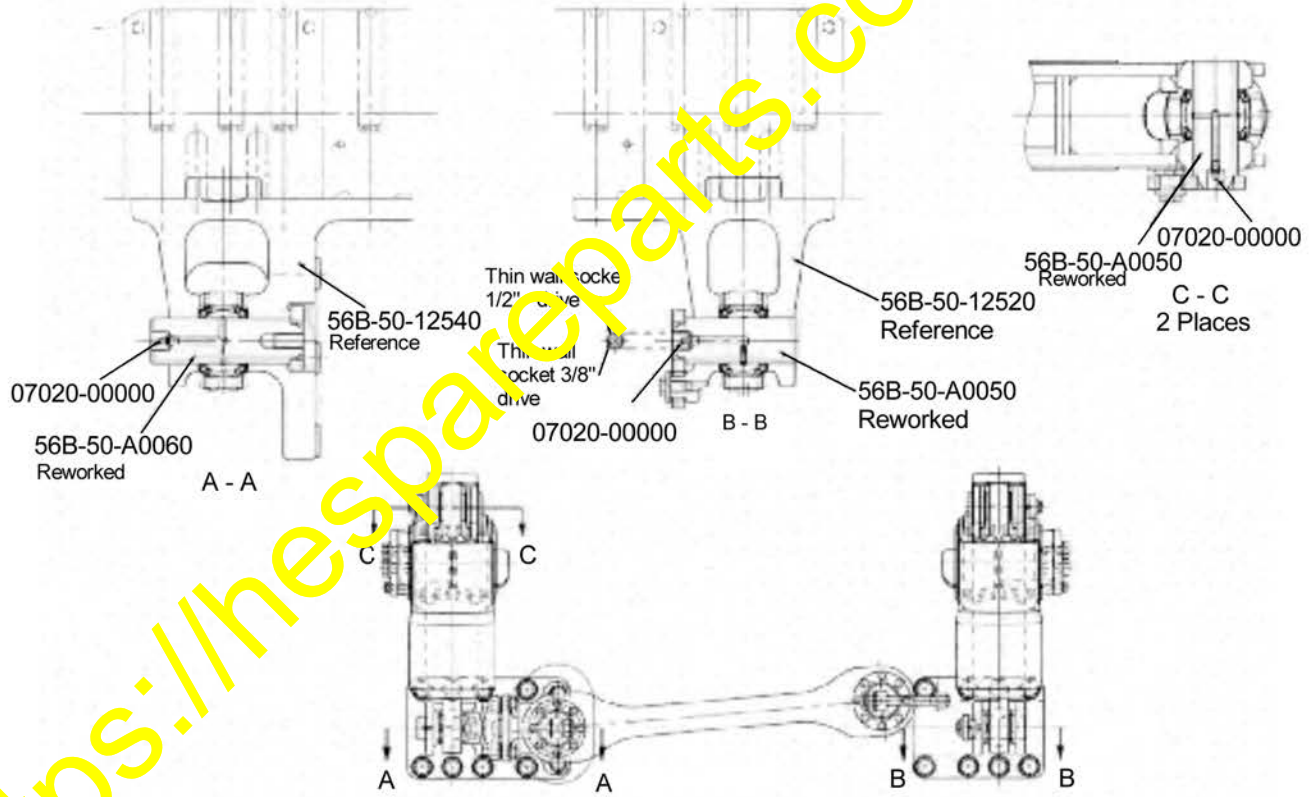
1. Park the machine on a flat level surface; lower the work equipment to the ground. Shut off the engine and cycle the controls to remove any residual hydraulic pressure from the work equipment circuits. Turn the parking brake switch on and block the tires.
2. Remove the key from the start switch until the repairs are complete. Place a tag on the steering controls advising: "This machine is being repaired. It should not be started or moved for any reason until the tag is removed by the person doing the repairs."



WARNING! Observe all safety and precautionary standards as dictated by the environment and work conditions under which the equipment will be inspected, reworked and repaired. Consult the "Shop Manual" and "Operator's and Maintenance Manual" and your "Komatsu district service manager" with any/all questions regarding safety.

3. Refer to shop manual for removal of rear suspension pins. Remove the rear suspension pin 56C-50-12570 and replace with pin 56B-50-A0060.
4. Refer to shop manual for removal of rear suspension pins. Remove the rear suspension (3) pins 56B-50-11211 and replace with (3) pins 56B-50-A0050.

<https://hespareparts.com/>



CN002757