

# PARTS & SERVICE NEWS

REF NO. AA03156

DATE October 22, 2003

(C)

Page 1 of 2

This Parts & Service News issuance replaces, AA00160, dated June 18, 2000. AA00160 should be discarded.

- SUBJECT:** HYDRAULIC TANK MOUNTING CAPSCREW FAILURE
- PURPOSE:** To inform the field of a kit for shimming hydraulic tank rear mounting brackets.
- APPLICATION:** Komatsu Mechanical Drive Dump Trucks:  
530M: A30001 thru A30038, 32628;  
HD1500-5: A30039 thru A30071
- FAILURE CODE:** 6011HA
- DESCRIPTION:** Hydraulic Tank Mount Reinforcement Kit (XK0201)

Some trucks in operation may experience broken mounting capscrews in the lower portion of the rear mounting bracket on the hydraulic tank. This failure can be attributed to an excessive gap between hydraulic tank mounting bracket (2, Figure 1) and the frame. If a gap greater than 0.397 mm (0.0156 in.) exists and/or broken mounting capscrews are found, install Hydraulic Tank Mount Reinforcement Kit (XK0201). Contents of the kit are listed in Table 1. A drawing containing installation instructions are included in the kit.

For instructions on how to properly measure the gap between the mounting bracket and the frame, refer to the procedure below.

## Gap Measurement Procedure

1. Remove the two lower mounting capscrews (4, Figure 1).
2. Ensure the two upper mounting capscrews (3) are tightened to **549 ± 55 Nm (405 ± 40 ft.lb.)**.
3. Measure the gaps (dimension X, Figure 2) behind the two lower mounting capscrew holes. If either of the gaps exceed 0.397 mm (0.0156 in.), shims are required. Install Hydraulic Tank Mount Reinforcement Kit (XK0201).

**TABLE 1. HYDRAULIC TANK MOUNT REINFORCEMENT KIT (XK0201)**

Part Number	Description	Quantity
EK8434	Drawing, Hydraulic Tank Reinforcement	1
EK7311	Shim	2
EK7312	Shim	2
EK7313	Shim	2
01011-82050	Capscrew	2
EK6474	Spacer	2
01643-32060	Washer	2

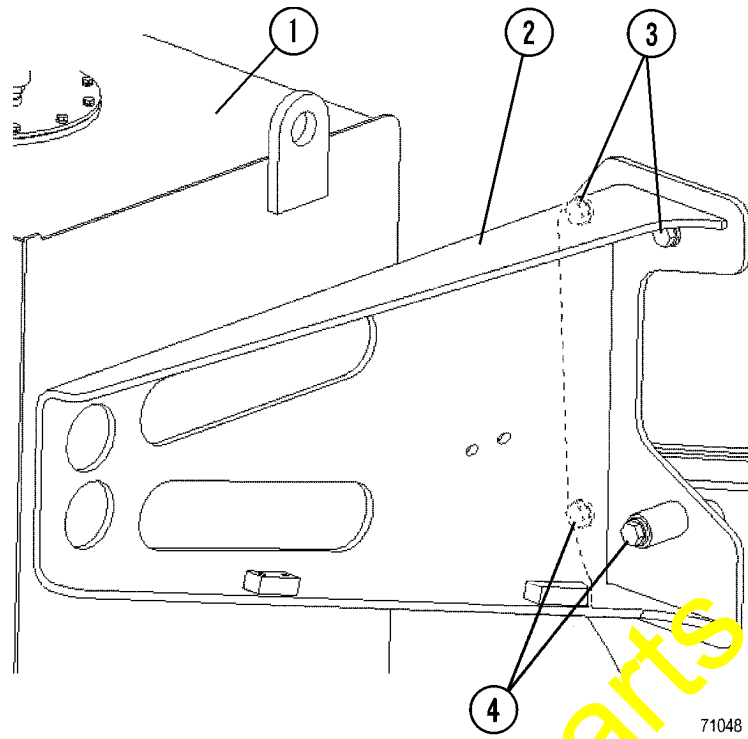
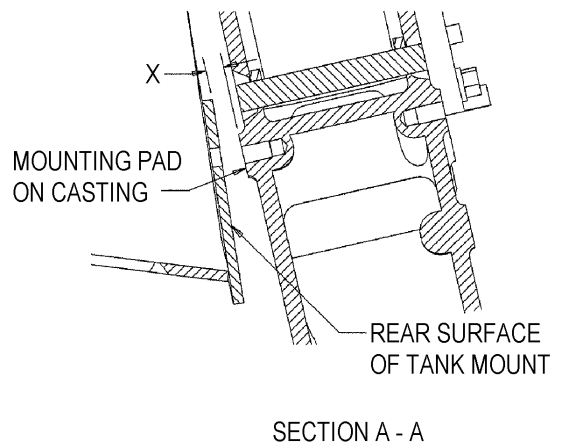
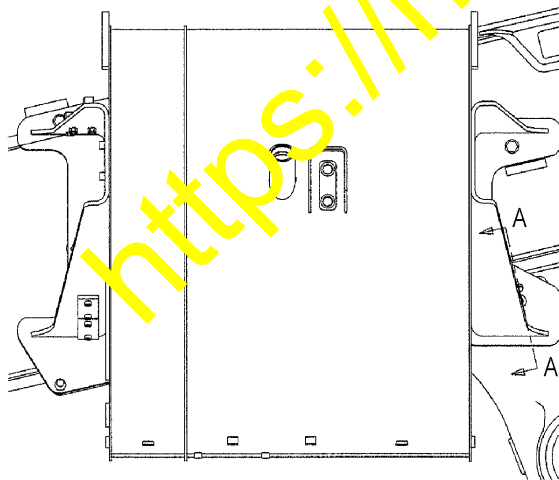


FIGURE 1. HYDRAULIC TANK REAR MOUNT

- 1. Hydraulic Tank
- 2. Mounting Bracket
- 3. Upper Mounting Capscrew
- 4. Lower Mounting Capscrew



71049

FIGURE 2. MEASURING MOUNTING BRACKET GAP