

PARTS & SERVICE NEWS

REF NO. AA04016

DATE February 10, 2004

(C)

Page 1 of 9

SUBJECT: L.H. DECK REINFORCEMENT FOR LUBE PUMP MOUNTING

PURPOSE: To add strength to the mounting area of the auto lube pump.

APPLICATION: Komatsu Wheel Loaders:
WA800-3LC: A50020 and Up;
WA900-3LC: A50017 and Up

FAILURE CODE: 8800FA

DESCRIPTION:

Some wheel loaders may experience damage to the auto lube pump mounting area. The damage occurs as a result of the weight of the larger sized auto lube pump (60 - 90 lbs.). A reinforcement procedure for the L.H. deck has been developed and is detailed in this Parts & Service News. The reinforcement will strengthen and stabilize the auto lube pump mounting area in order to prevent future damage to the L.H. deck during machine operation. Table 1 lists the reinforcement parts, which may be made locally. Refer to Figures 1-6 for installation instructions. Refer to Figures 7 - 11 for reinforcement parts specifications.

Please observe all safety and precautionary standards as dictated by the environment and work conditions under which the equipment will be inspected, reworked and repaired. Consult the Shop Manual for the particular model or your Komatsu district service manager with any and all questions regarding safety.

1. Park the machine on a flat level surface, lower the boom and bucket to the ground. Shut off the engine and cycle the controls to remove any residual hydraulic pressure from the boom and bucket circuits. Fully apply the parking brake.
2. Place wheel chocks at the front and rear of all wheels to prevent the machine from moving.
3. Place the steering safety bar in the locked position.
4. Remove the key from the key switch and retain it until the repairs are complete. Attach a tag on the steering wheel advising: "This machine is being repaired. It should not be started or moved for any reason until the tag is removed by the person doing the repairs".
5. For any welding, always have a trained, experienced welder perform the work. When performing welding work, always wear gloves, apron, glasses, cap and other clothes suited for welding work. Gas is generated and there is danger of fire or electrocution when welding, so never allow any unqualified personnel to perform the welding. The welder must follow the precautions given below:
 - Disconnect the battery terminals to prevent explosion of the battery.
 - Remove the paint from the place being welded to prevent gas from being generated.
 - If hydraulic equipment or piping or places close to these are heated, flammable vapor or spray will be generated and there is danger of this catching fire, so avoid applying heat to such places.
 - If heat is applied directly to rubber hoses or piping under pressure, they may suddenly burst, so cover them with fireproof sheeting.
 - Always wear protective clothing.
 - Ensure that there is good ventilation.
 - Clean up any flammable materials and make sure that there is a fire extinguisher in good working condition at the workplace.

TABLE 1. L.H. DECK REINFORCEMENT PARTS LIST

Part Number	Description	Quantity	Remarks
427-S95-A4230	Angle	2	Figure 7
427-S95-A580	Plate	1	Figure 8
427-S95-A690	Bracket	1	Figure 9
427-S95-A780	Angle	1	Figure 10
427-S95-A790	Plate	1	Figure 11

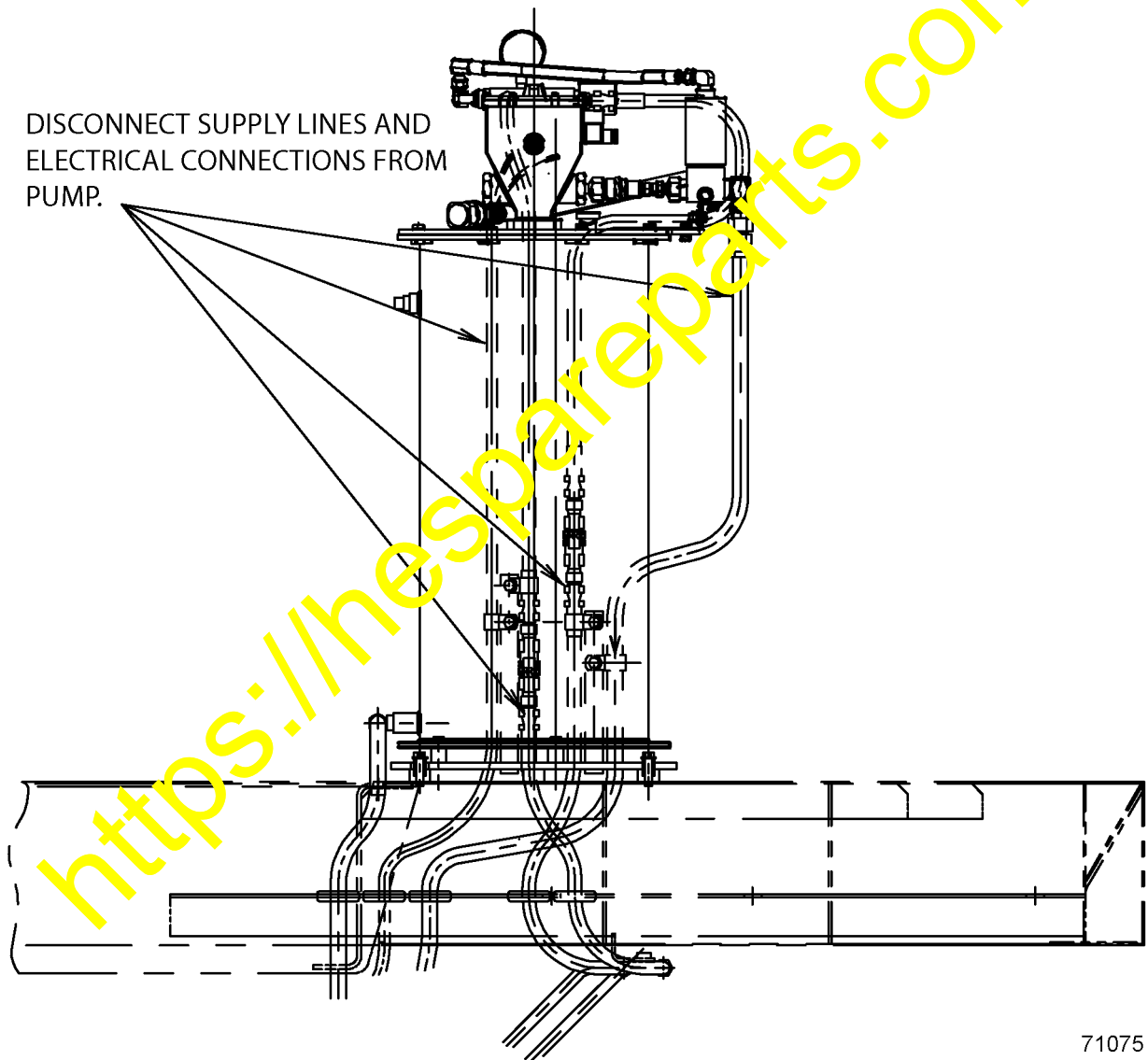


FIGURE 1. DISCONNECTION OF LUBE PUMP

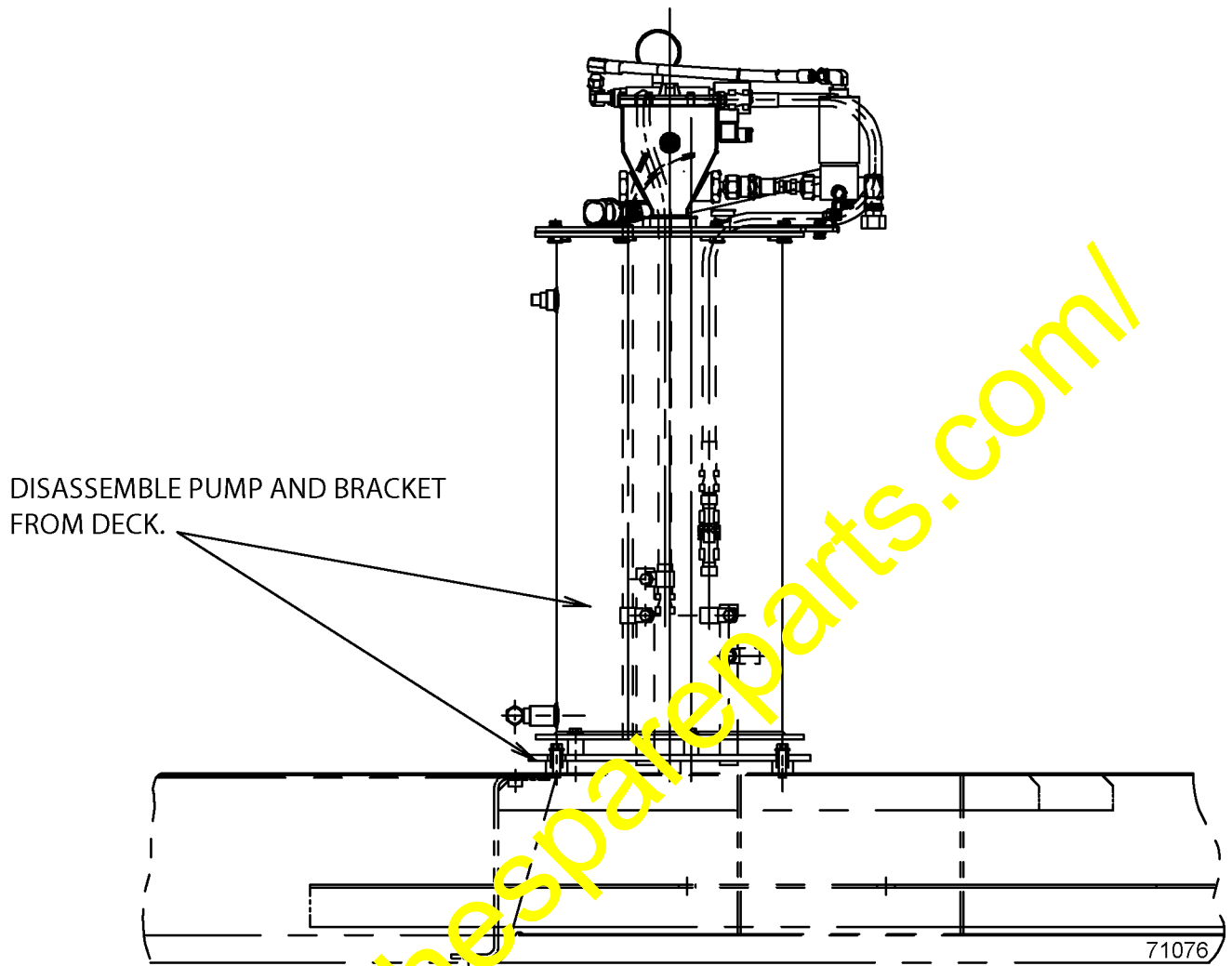


FIGURE 2. DISASSEMBLY OF LUBE PUMP

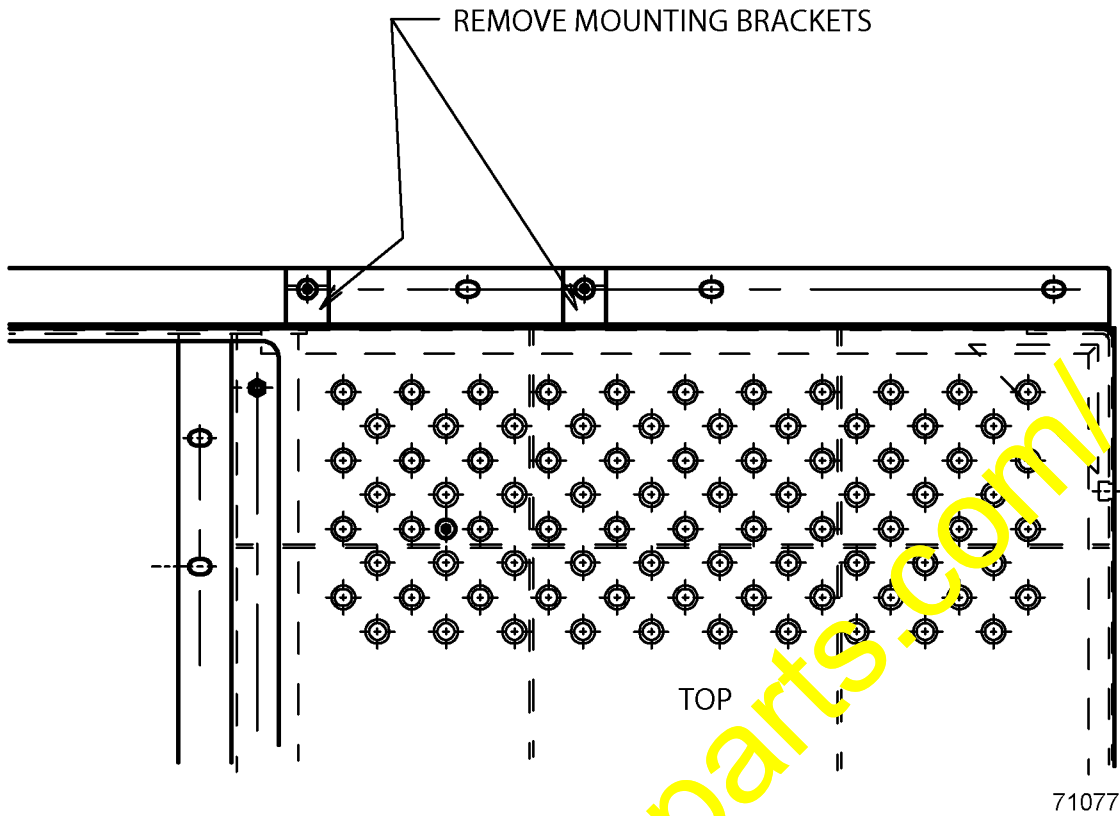
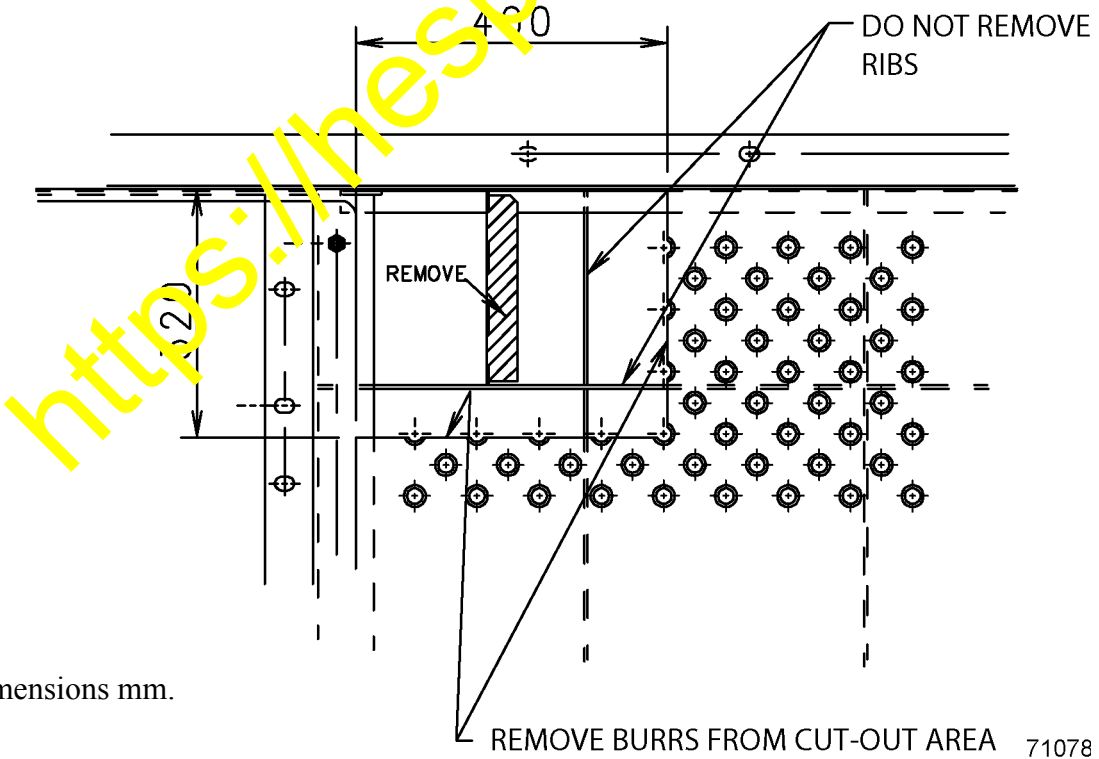


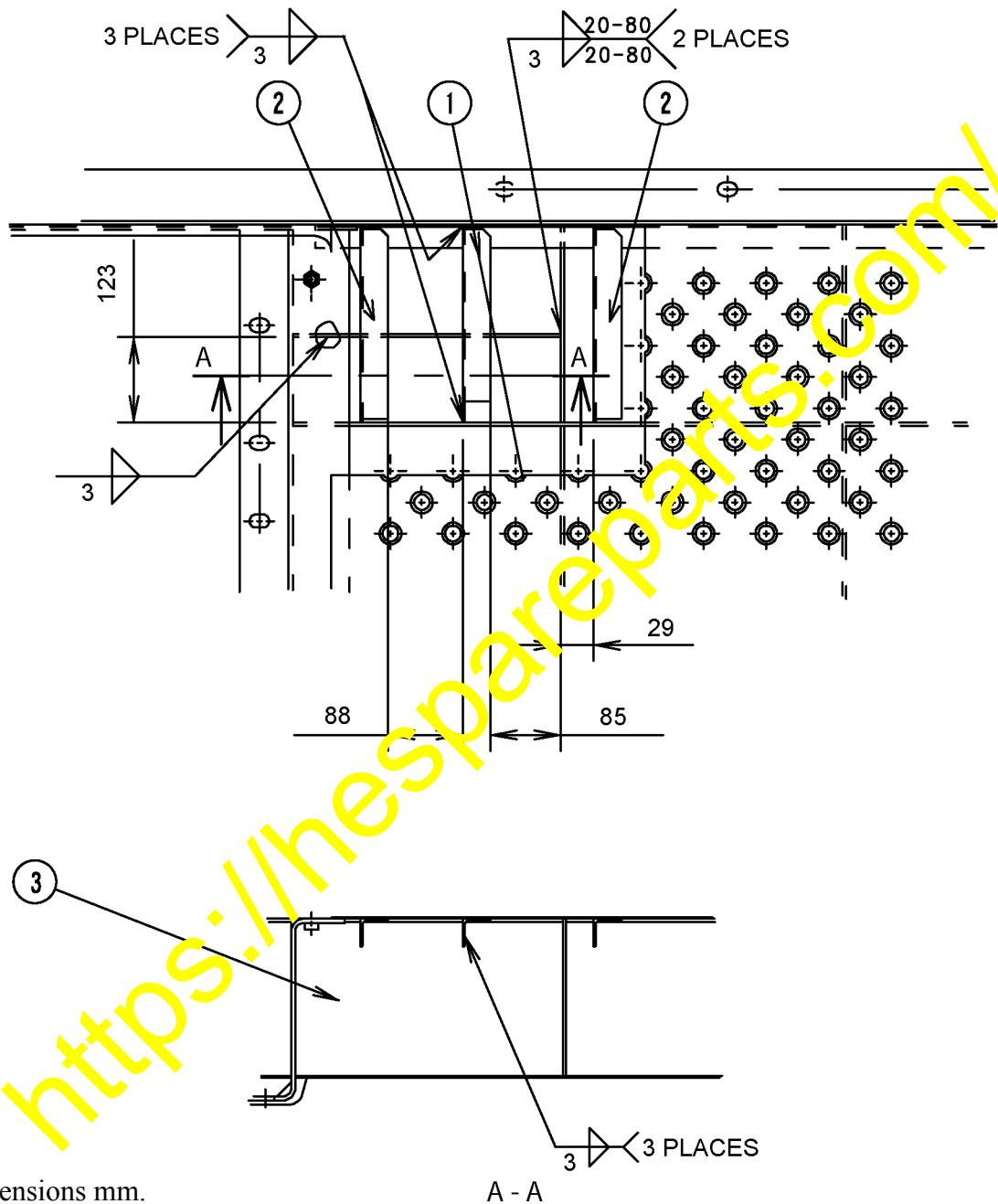
FIGURE 3. BRACKET REMOVAL

CUT OUT DECK FLOOR TO DIMENSIONS SHOWN, ALSO REMOVE BRACKET.



All dimensions mm.

FIGURE 4. PREPARATION

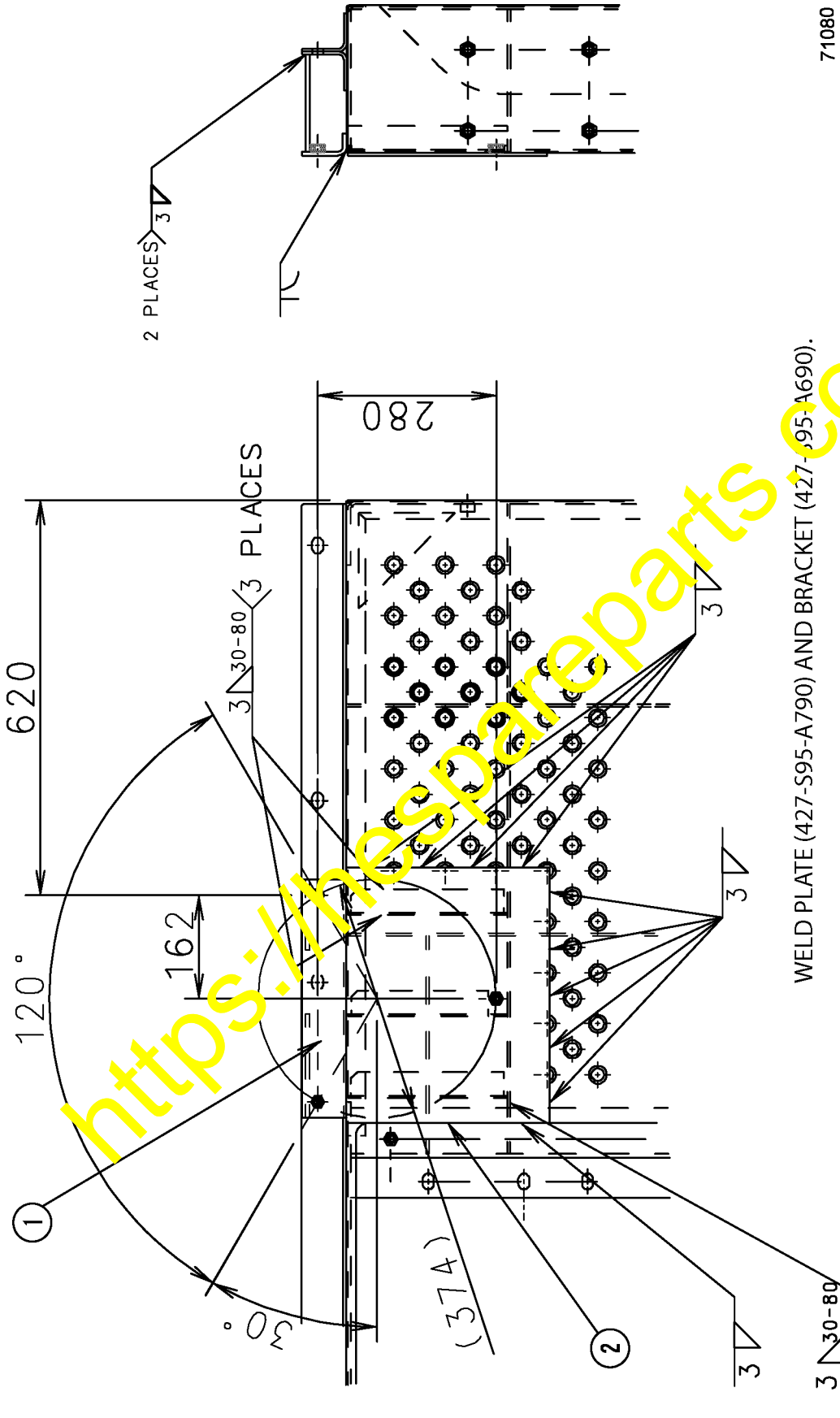


All dimensions mm.

FIGURE 5. INSTALLATION

- | | |
|-------------------------|-------------------------|
| 1. Angle (427-S95-A780) | 3. Plate (427-S95-A580) |
| 2. Angle (427-S95-4230) | |

71079



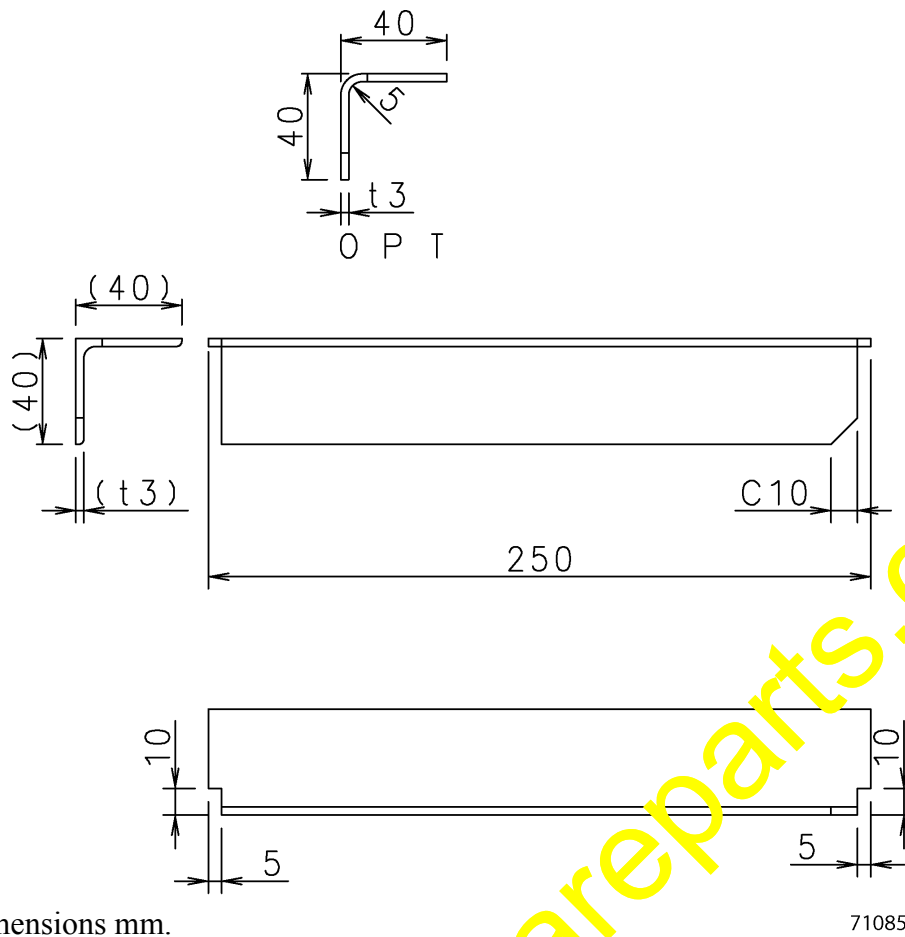
WELD PLATE (427-S95-A790) AND BRACKET (427-S95-A690).

71080

FIGURE 6. INSTALLATION

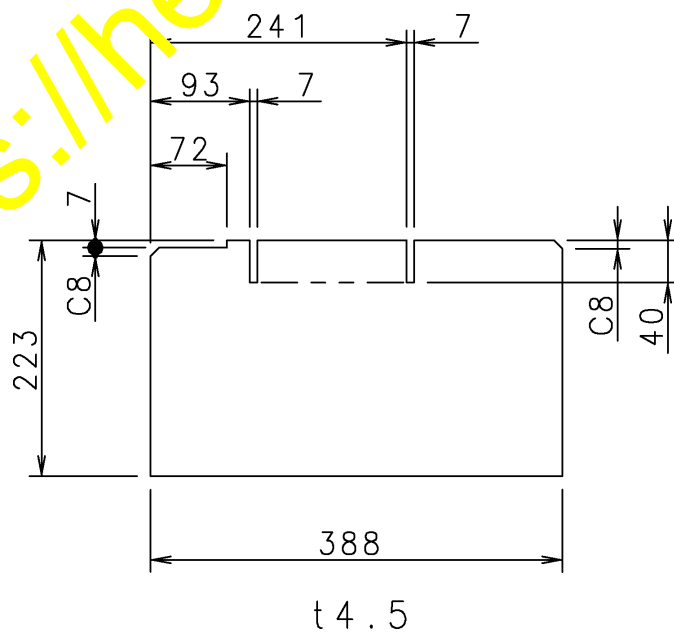
- 1. BRACKET (427-S95-A690)
- 2. PLATE (427-S95-A790)

All dimensions mm.



All dimensions mm.

FIGURE 7. ANGLE 427-S95-4230



All dimensions mm.

FIGURE 8. PLATE 427-S95-A580

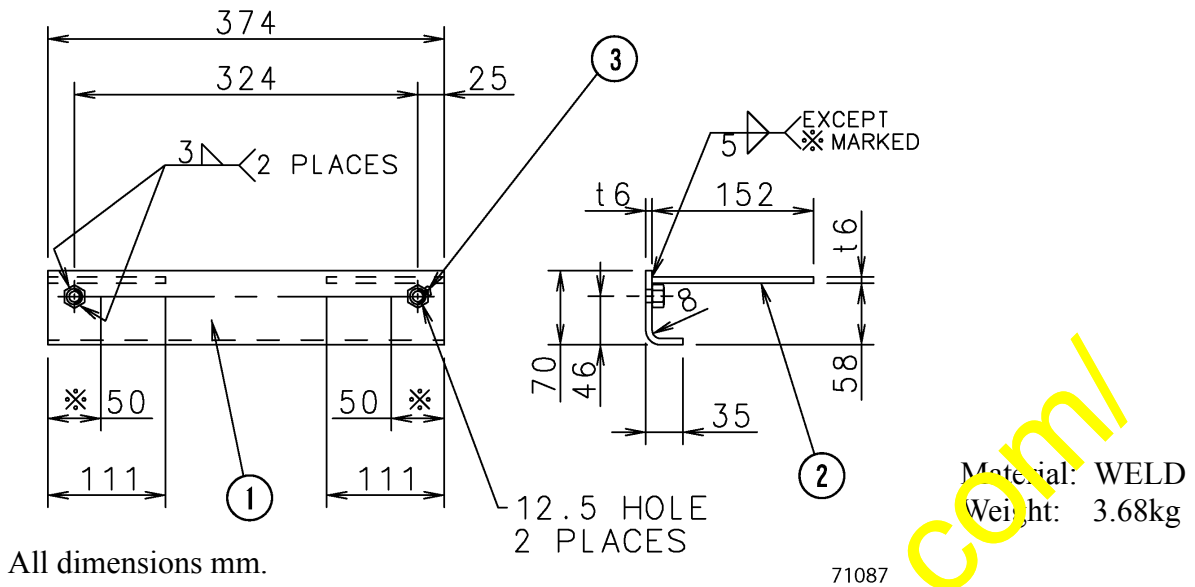


FIGURE 9. BRACKET 427-S95-A690

- 1. PLATE (SS400F (ASTM A36), t6 x 374)
- 2. PLATE (SS400F (ASTM A36), t6 x 111 x 152)
- 3. NUT (01580-01008)

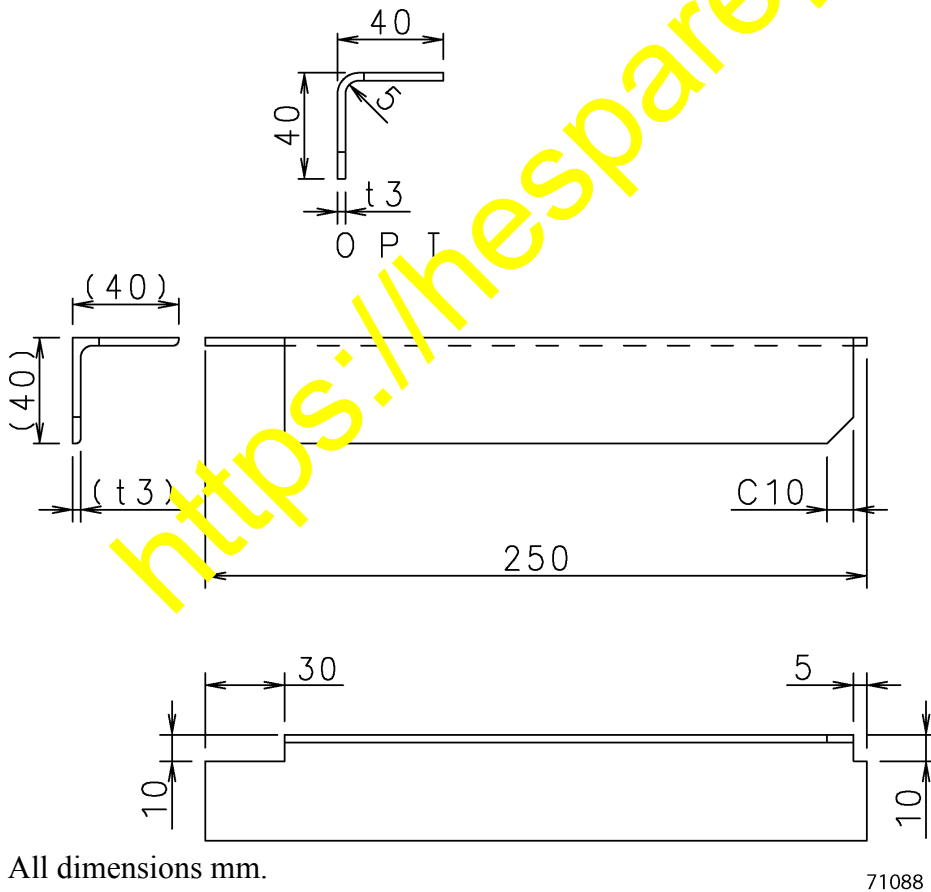
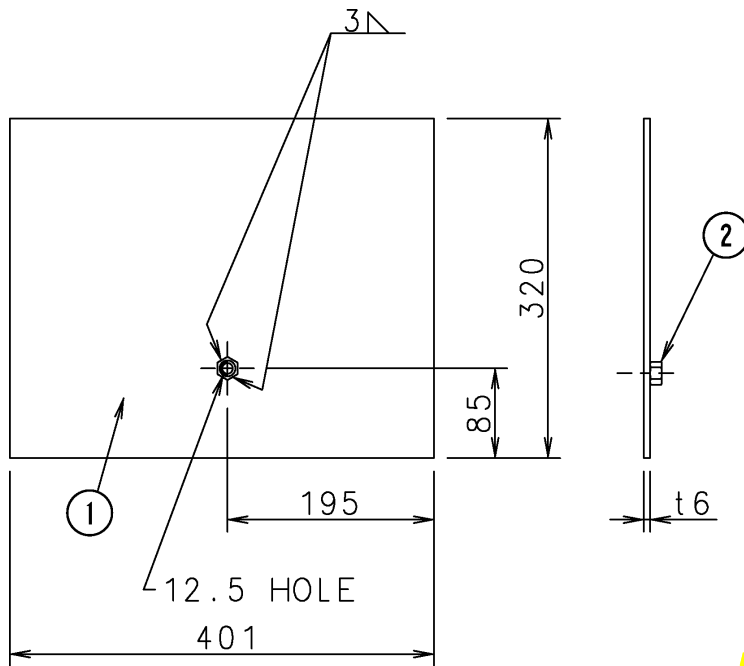


FIGURE 10. ANGLE 427-S95-A780



Material: WELD
Weight: 6.1kg

All dimensions mm.

FIGURE 11. PLATE 427-S95-A790

1. PLATE (SS400F (ASTM A36), t6)

2. NUT (01580-01008)

NOTE: After deck reinforcement is complete, repair area. Install pump and mounting bracket to deck by reversing instructions from Figures 1 and 2.