

# PARTS & SERVICE NEWS

REF NO.	AA04028A
DATE	April 20, 2004

*This Parts & Service News supersedes the previous issuance, AA04028, dated January 28, 2004. AA04028 should be discarded.*

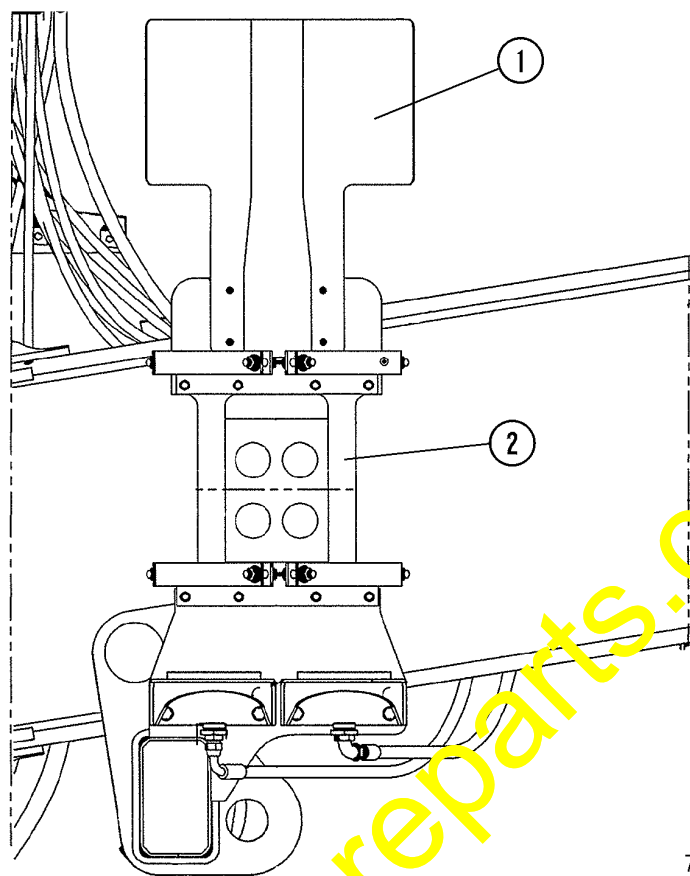
- SUBJECT:** TIRE RUBBING ON BLADDER ACCUMULATORS
- PURPOSE:** To introduce a kit for relocating accumulators to eliminate tire interference.
- APPLICATION:** Komatsu 730E Dump Trucks A30219 thru A30284;  
**and all 730E's equipped with bladder accumulators**
- FAILURE CODE:** 6030MV
- DESCRIPTION:** Accumulator Relocation Kit (XK0307)

Some trucks in operation may experience slight interference between the left front tire and the rear bladder accumulator mounted on the left frame rail. Accumulator Relocation Kit (XK0307) has been developed to move the accumulator forward (toward the front of the truck) and inward (toward the frame rail). A new mounting bracket (2, Figure 1) allows for the necessary clearances. The new bracket also provides a mount for a heat shield (1) to protect the accumulators from engine exhaust piping. A drawing, Figure 2, containing installation instructions is included in the kit. Refer to Table 1 for a complete listing of kit components.

Some cutting and welding is required. When welding, follow the guidelines that are outlined in Parts and Service News, "Field Welding For Assembly Or Repair" (AA00046C). For additional welding guidelines, refer to Welding I (SEBF14001) and Welding II (SEBF15002).

**TABLE 1. ACCUMULATOR RELOCATION KIT (XK0307)**

Part Number	Description	Quantity
EL0801	Drawing, Accumulator Relocation	1
EL0206	Bracket, Mounting	1
EL0214	Clamp	2
EL0220	Shield, Heat	1
C1603	Capscrew	4
WA0720	Flatwasher	4
C0312	Lockwasher	4
EB9291	Plate, Cap	1



71100

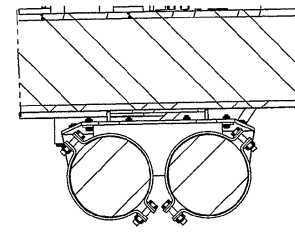
- 1. Heat Shield
- 2. Mounting Bracket

FIGURE 1. NEW ACCUMULATOR MOUNTING BRACKET

INSTALLATION NOTES:

- 1 REMOVE ACCUMULATORS AND MOUNTING HARDWARE
- 2 REMOVE ACCUMULATOR MOUNT AND CUT OFF TUBE AS SHOWN
- 3 WELD CAP PLATE ON END OF BOX BEAM CUT OFF
- 4 POSITION AND WELD ACCUMULATOR MOUNT STRUCTURE  
(FOLLOW THE GUIDELINES THAT ARE OUTLINED IN PARTS & SERVICE NEWS "FIELD WELDING FOR ASSEMBLY OR REPAIR" AA00046C, WELDING MANUAL I SEBF14001, AND WELDING MANUAL II SEBF15002)
- 5 CLEAN AND PAINT
- 6 INSTALL SHIELD AND ACCUMULATOR MOUNTING PARTS
- 7 INSTALL ACCUMULATORS

ITEM	PART NO	QTY	DESCRIPTION
1	EL0206	1	MOUNT BRACKET STR
2	EL0214	2	CLAMP STR
3	EL0220	1	SHIELD STR
4	C 1603	4	C/S .38-16 X 1.25
5	WA0720	4	F/W .38
6	C 0312	4	L/W .38
7	EB9291	1	PLATE, CAP



SECTION B-B

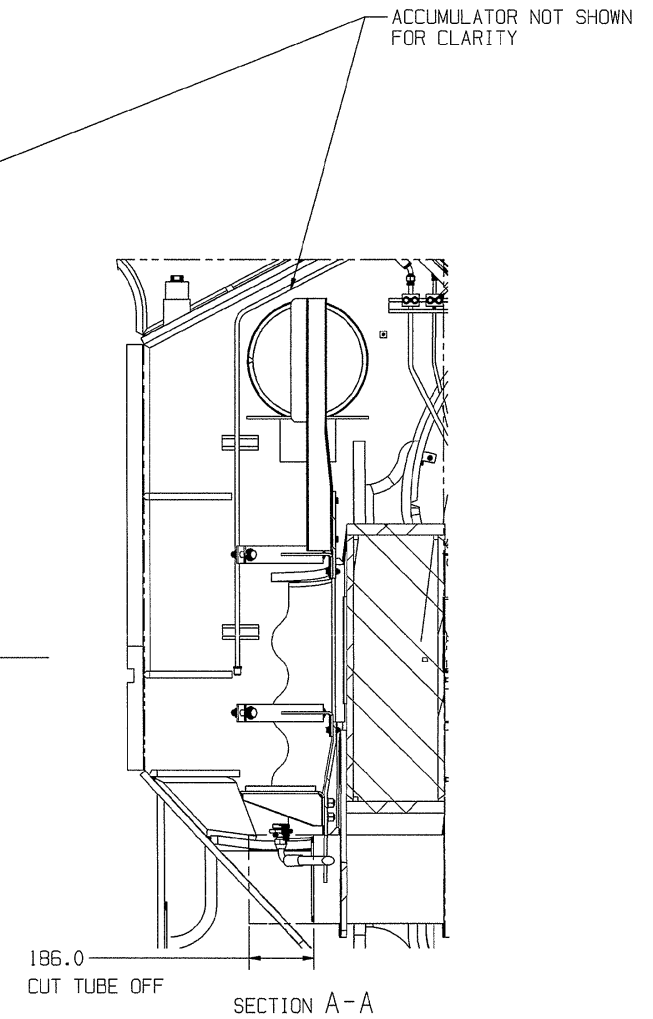
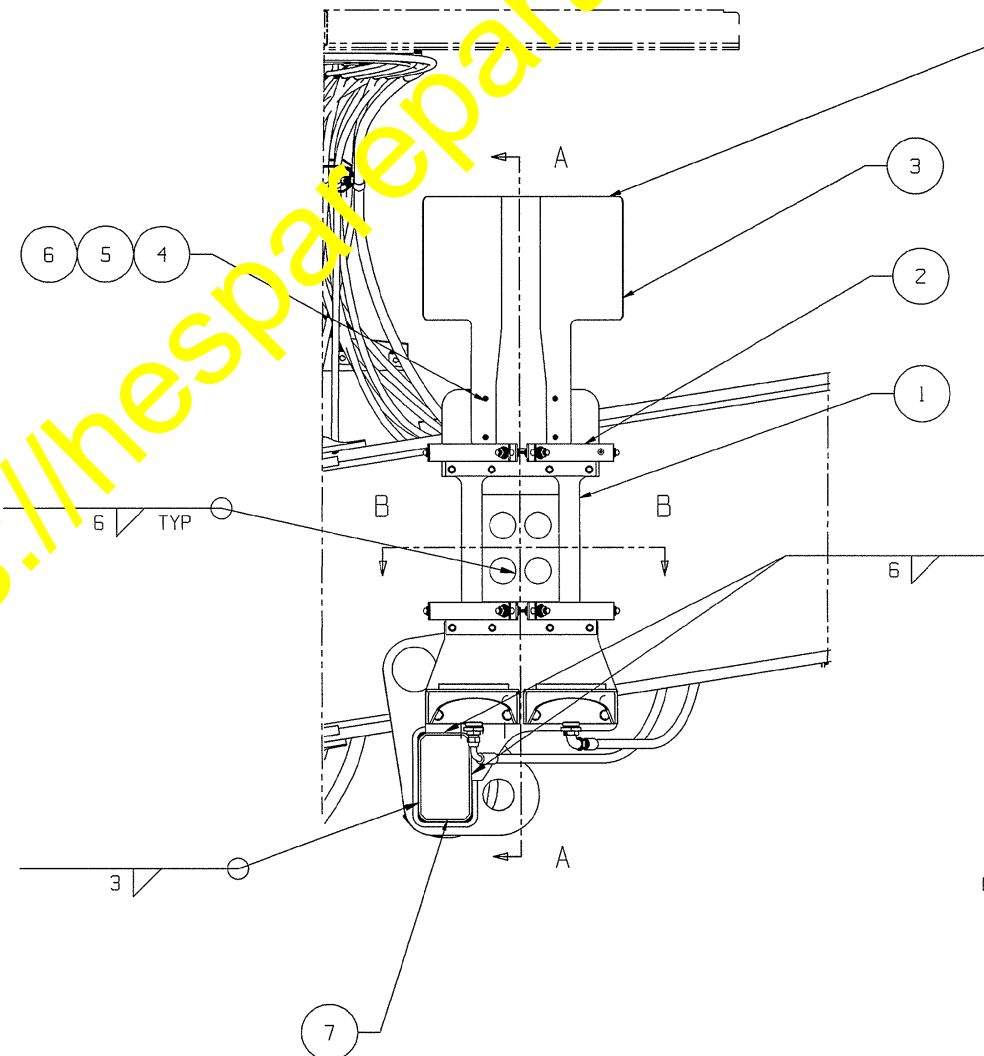
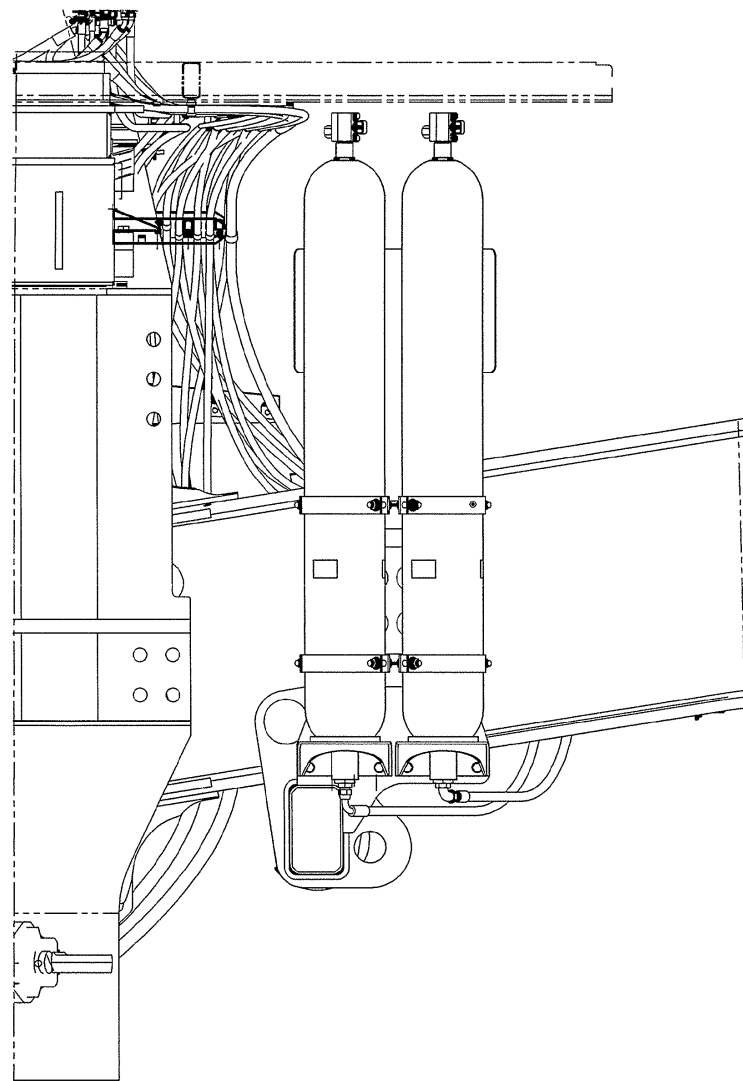


FIGURE 2. INSTALLATION DRAWING (EL0801)