

PARTS & SERVICE NEWS

REF NO.	AA04135
DATE	August 10, 2004

(C)

SUBJECT: IMPROVE ROUTING OF BRAKE COOLING SYSTEM TUBE

PURPOSE: To introduce to the field a more reliable routing of brake cooling system tube.

APPLICATION: Komatsu Mechanical Drive Dump Trucks:
 330M: 24120-24605, A10190-A10223, A10225-A10227, A10231, A10232;
 HD785-3: A3001 - A3043;
 HD785-5LC: A10144, A10224, A10228 - A10325;

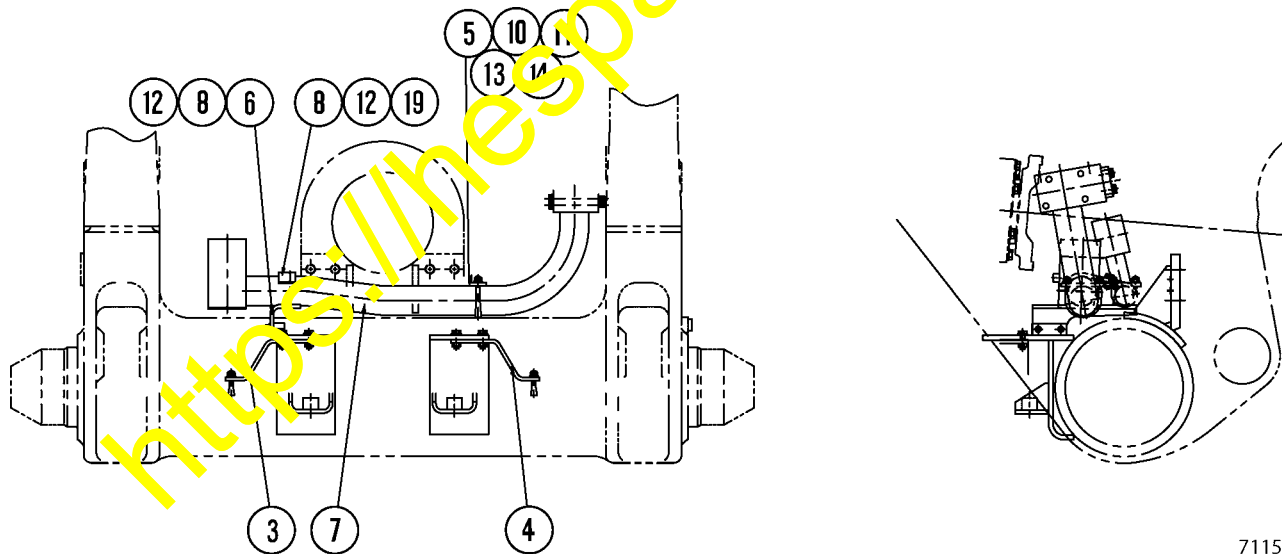
FAILURE CODE: 0397FA

DESCRIPTION: Prevent tube damage caused by failed rear drive shaft.

Some trucks in the field could experience damage to brake cooling system tube (7, Figure 1). The damage can be caused by a joint failure in the rear drive shaft. After the joint fails, the drive shaft breaks loose and is constrained by the driveshaft guard. The brake cooling system tube is too close and is often hit by the draft shaft. When the brake cooling system tube is damaged, oil leakage may occur. This Parts & Service News introduces a better route for the brake cooling system tube and a rework procedure for the driveshaft guard.

Tube Routing Procedure

1. Remove existing brake cooling system tube (7, Figure 1).



71150

FIGURE 1. CURRENT BRAKE COOLING SYSTEM TUBE ROUTE

- | | | |
|---------------------------|--------------------------|--------------------------|
| 3. Bracket (561-61-63530) | 7. Tube (561-61-65811) | 12. Washer (01643-31232) |
| 4. Bracket (561-61-63540) | 8. Bolt (01010-81230) | 13. Clip (07283-34949) |
| 5. Bracket (561-61-A7130) | 10. Nut (01590-01009) | 14. Clip (07283-37663) |
| 6. Bracket (561-61-A5220) | 11. Washer (01643-31032) | 19. Clamp (561-61-65472) |

WELDING GUIDELINES

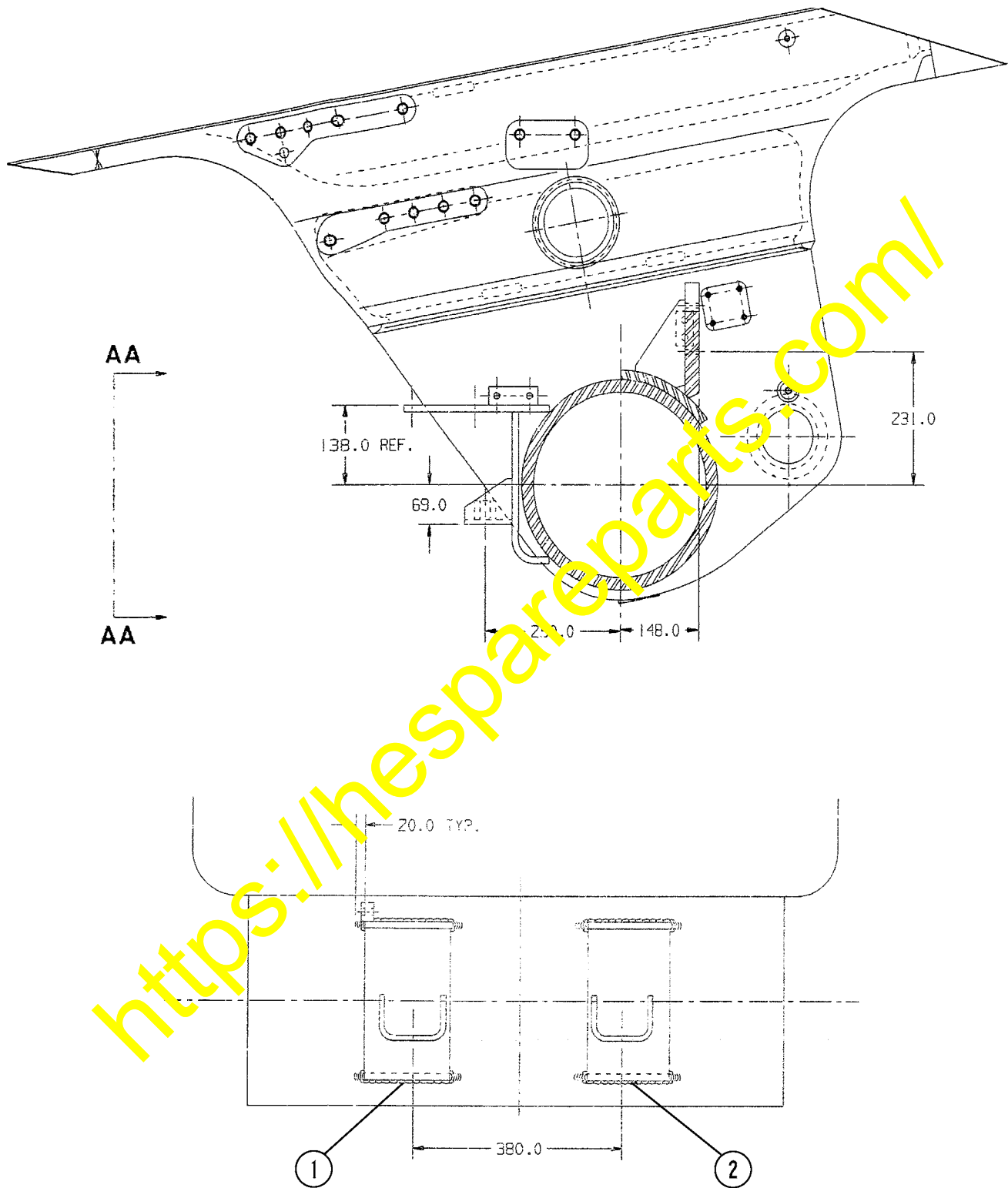
Follow the guidelines that are outlined in Parts and Service News, *Field Welding for Assembly or Repair* (AA00046C), *Welding Manual I* (SEBF14001), and *Welding Manual II* (SEBF15002). It is important that these instructions are read, fully understood, and followed.

PARTS LIST FOR IMPROVED BRAKE COOLING SYSTEM TUBE ROUTING

ITEM NUMBER	NEW			OLD		
	PART NUMBER	PART NAME	QTY	PART NUMBER	PART NAME	QTY
1	561-46-64121	BRACKET	1	561-54-A5160	BRACKET	1
2	561-46-64132	BRACKET	1	561-54-A5110	BRACKET	1
3	561-61-63531	BRACKET	1	561-61-63530	BRACKET	1
4	561-61-63541	BRACKET	1	561-61-63540	BRACKET	1
5	561-61-65880	BRACKET	2	561-61-A7130	PLATE	1
6	561-61-65890	BRACKET	1	561-61-A5221	BRACKET	1
7	561-61-65812	TUBE	1	561-61-65811	TUBE	1
8	01010-81230	BOLT	2	01010-81230	BOLT	2
9	01010-81240	BOLT	4	---	---	---
10	01597-01009	NUT	6	01590-01009	NUT	4
11	01643-31032	WASHER	6	01643-31032	WASHER	4
12	01643-31232	WASHER	6	01643-31232	WASHER	4
13	07283-34949	CLIP	2	07283-34949	CLIP	1
14	07283-37663	CLIP	1	07283-37663	CLIP	1
15	07000-F3048	O-RING	3	REPLACE WHEN REQUIRED		
16	07000-F2055	O-RING	2	REPLACE WHEN REQUIRED		
17	07042-20108	PLUG	1	REPLACE WHEN REQUIRED		
18	07042-21222	PLUG	1	REPLACE WHEN REQUIRED		
19	---	---	---	561-61-65472	CLAMP	1

<https://mespareparts.com/>

2. Remove existing brackets (1 & 2, Figure 2) from frame.
3. After bracket removal, grind smooth and clean frame surface.



VIEW AA - AA

FIGURE 2. BRACKET REMOVAL

71151

1. Bracket (561-54-A5110)

2. Bracket (561-54-A5160)

4. Weld brackets (1 & 2, Figure 3) as shown.

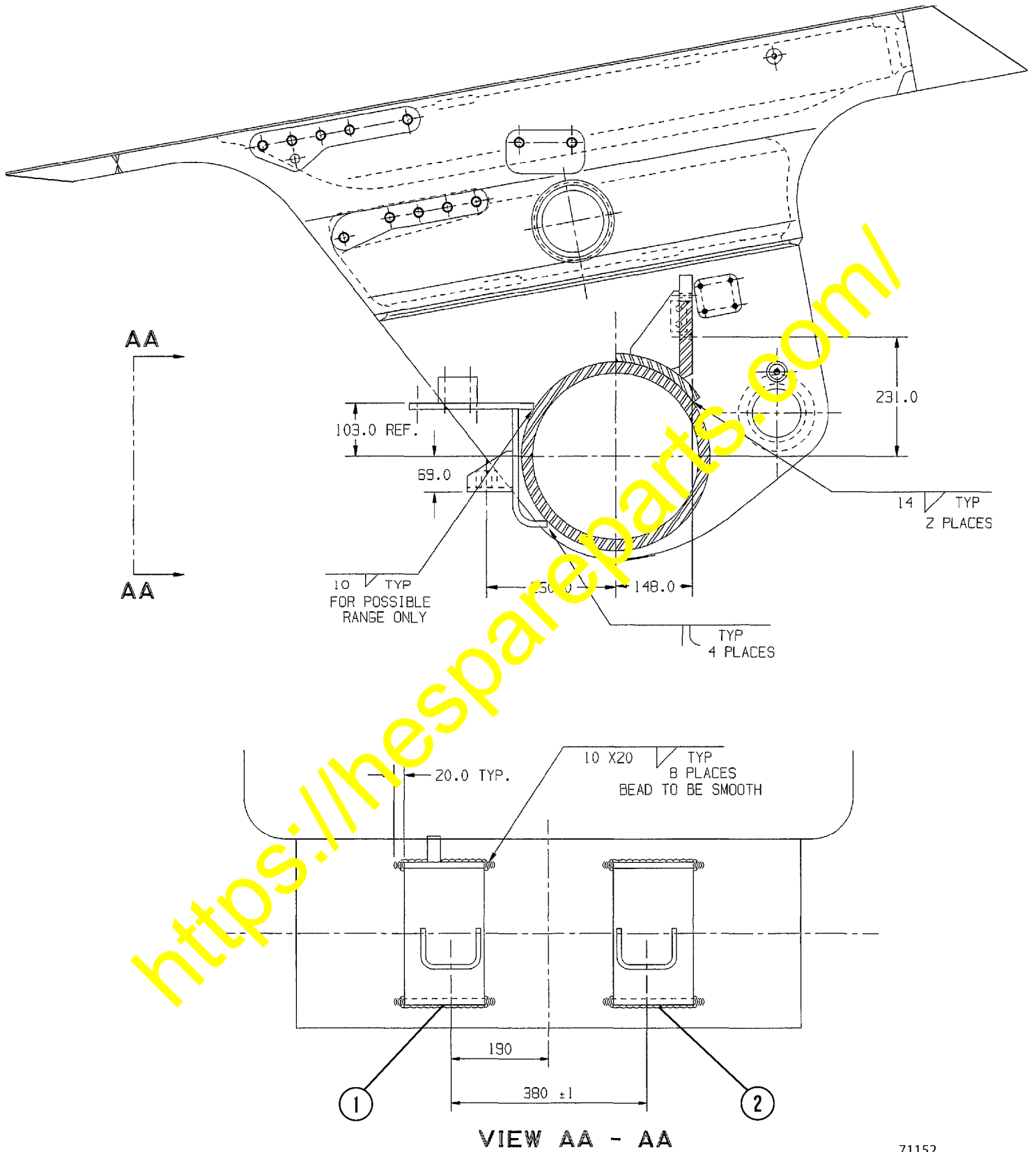


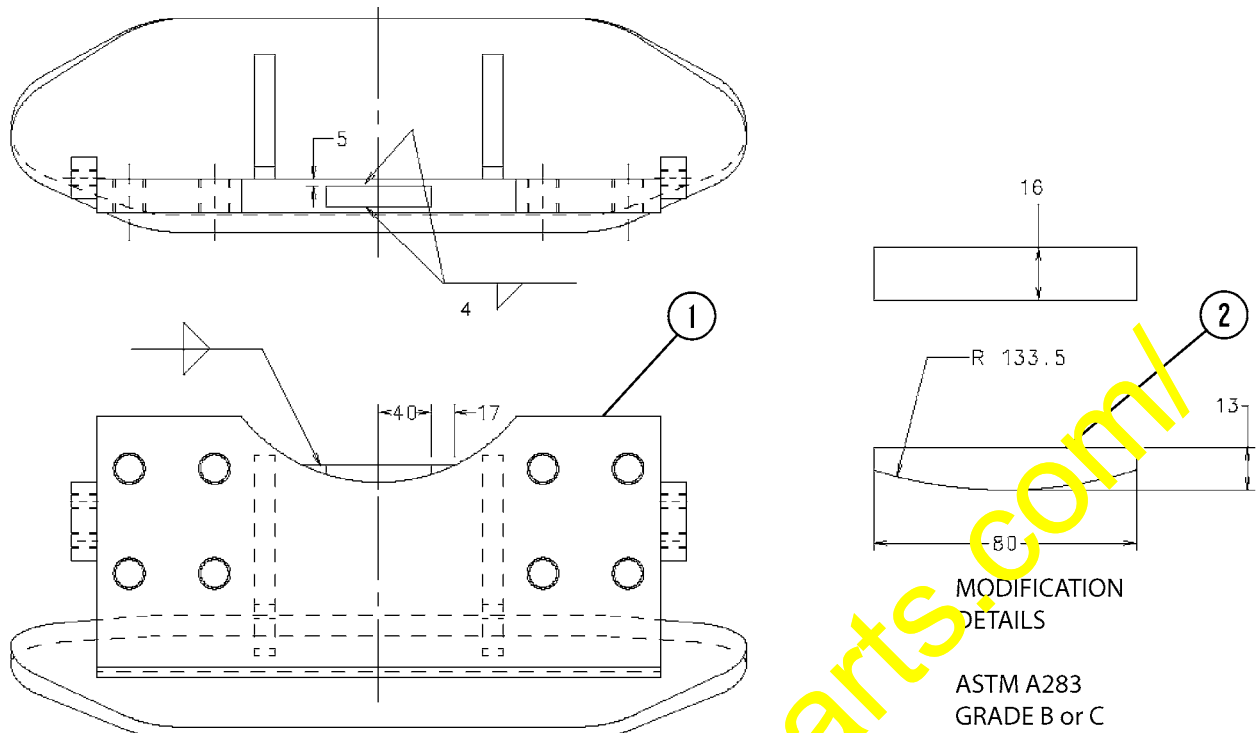
FIGURE 3. BRACKET INSTALLATION

1. Bracket (561-46-64132)

2. Bracket (561-46-64121)

71152

5. Rework driveshaft guard (1, Figure 4) as detailed below.

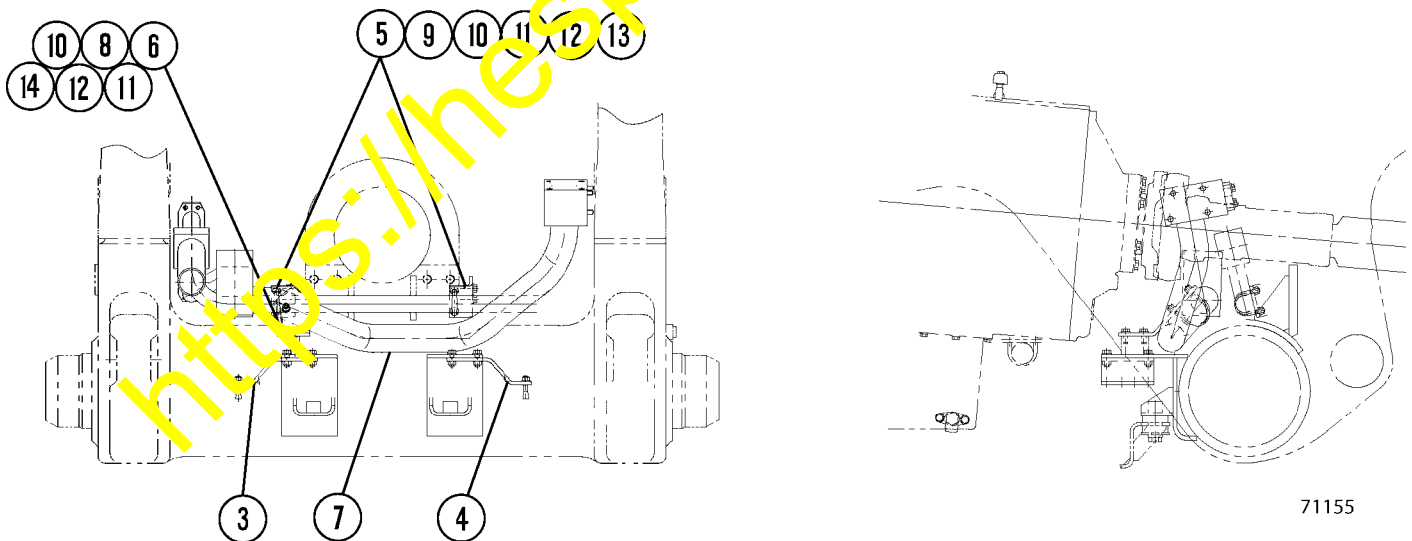


71154

FIGURE 4. DRIVESHAFT GUARD REWORK

- 1. Driveshaft Guard
- 2. Weldment (made locally)

6. Assemble new brake cooling system tube (7, Figure 5) with hardware shown.



71155

FIGURE 5. NEW BRAKE COOLING SYSTEM TUBE ROUTE

- | | | |
|---------------------------|------------------------|--------------------------|
| 3. Bracket (561-61-63531) | 7. Tube (561-61-65812) | 11. Washer (01643-31032) |
| 4. Bracket (561-61-63541) | 8. Bolt (01010-81230) | 12. Washer (01643-31232) |
| 5. Bracket (561-61-65880) | 9. Bolt (01010-81240) | 13. Clip (07283-34949) |
| 6. Bracket (561-61-65890) | 10. Nut (01597-01009) | 14. Clip (07283-37663) |