

# PARTS & SERVICE NEWS

REF NO.	AA97080A
DATE	July 9, 1997

Page 1 of 3

- SUBJECT:** A. Radiator Piping Change to Replace PB4425 Hump Hose (PST #604).  
B. Engine Water Pump Suction Hose Revision (New Release)
- PURPOSE:** This PARTS & SERVICE NEWS Corrects AA97080, Dated June 4, 1997. The Part Number Previously Listed for Item #39A Was Incorrect
- APPLICATION:** 210M (BFA36, 40) Haulpak Trucks  
All with CUMMINS KTTA-19 and QSK-19 Engines
- DESCRIPTION:** A. This PARTS & SERVICE NEWS Reprints Information Released in Former Parts and Service Topic (PST) #604, dated 19 May, '95,  
B. Adds New Material for Engine Water Pump Suction Hose

## Introduction:

### A. Reprinted from PST #604:

A water piping arrangement has been designed for the 210M model trucks listed above in the area of the top hose and tube section where there is a transition from a 2 1/2 in. O.D. tube to a 3.0 in. O.D. inlet to the top radiator. The previous design made this transition in the Hump Hose. This design utilizes a metal tube so that the transition is made entirely in the tube and the new Hump Hose is the same diameter at both ends.

Applications where the ambient temperature is high and the heat load from the engine or braking system is severe can benefit from this design change.

Refer to Chart, page 3, for Parts information.

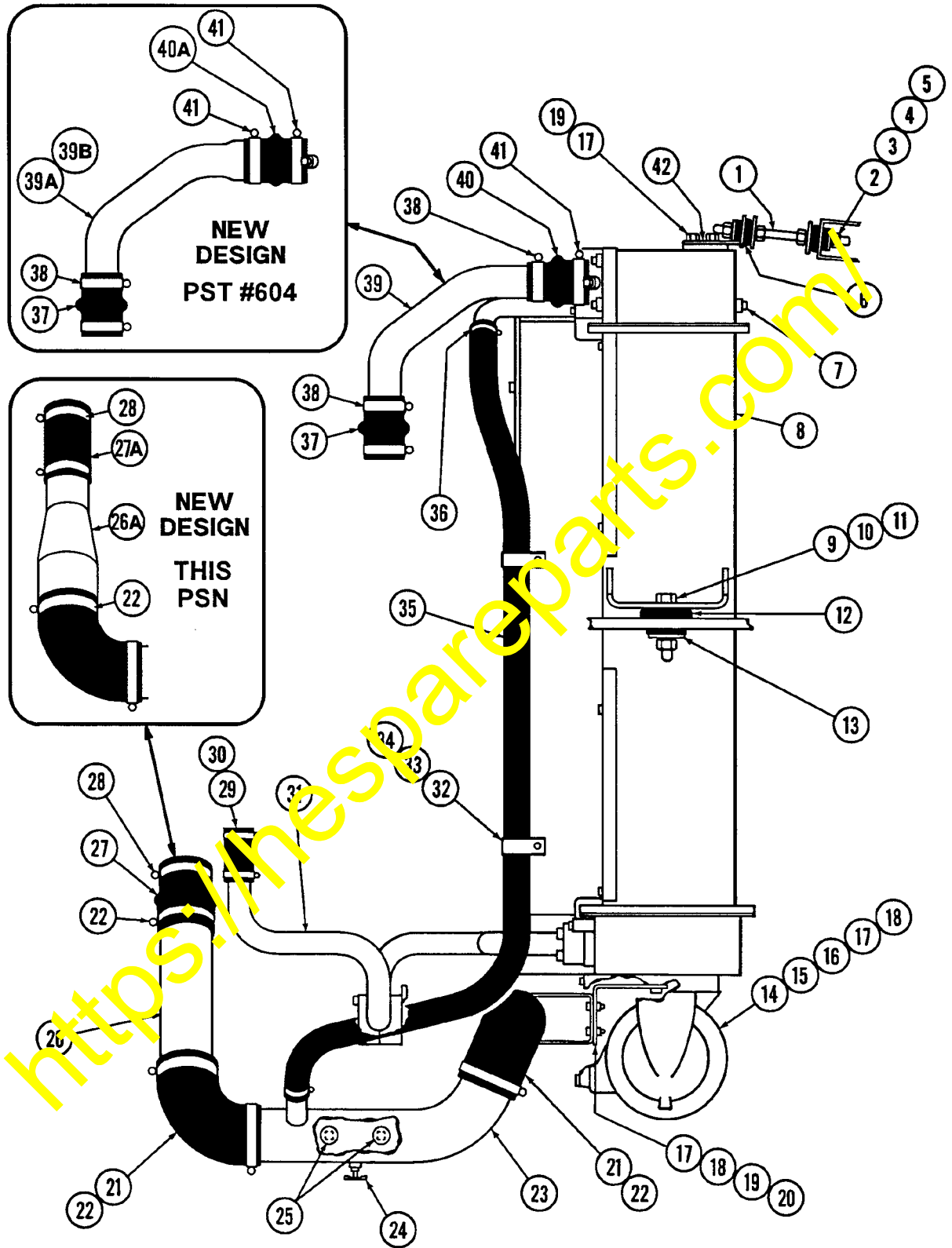
When this change is made to the water piping, all other hoses and tubes should be checked to insure they are in satisfactory condition. Heat deflector shields around hoses adjacent to the turbocharger must be in place, and support brackets maintained, to prevent undue stress on water piping.

### B. New Release.

A new design change has been released for the 210M model trucks listed above in the area of the water pump suction line hose. This revised design prevents rubbing between the inlet hose to the engine water pump and the water conditioning filter. Older trucks can be converted to this design by ordering the tube and hose listed.

This change will be incorporated into production trucks in the 3rd Quarter, 1997.

Refer to Chart, page 3, for Parts information.



**FIG. 15365A  
RADIATOR PIPING**

PARTS INFORMATION						
Radiator Piping Change (Refer to FIG. 15365A)						
New Design			PART DESCRIPTION	Previous Design		
Item No.	Qty.	Part Number		Item No.	Qty.	Part Number
<b>PST # 604</b>						
38	2	VN3497	CLAMP	38	4	VN3497
39A	1	EF7510	TUBE, L.H.	39	1	TY8629
39B	1	EF6585	TUBE, R.H.	39	1	TY8630
40A	1	TA0185	HUMP HOSE	40	1	PB4425
41	4	WA1055	CLAMP	41	2	WA1055
<b>THIS PSN</b>						
26A	1	EG5352	TUBE	26	1	TZ5802
27A	1	07260-28718	HOSE	27	1	VM5378
Items listed above are Qty/Truck						
Contact the Peoria Operations Parts Department for availability of the above parts.						

<https://hespareparts.com/>

<https://hespareparts.com/>