

PARTS & SERVICE NEWS

REF NO.	AA97115
DATE	July 28, 1997

Page 1 of 1

SUBJECT: NEW CONNECTING ROD CAPSCREW

PURPOSE: The new connecting rod capscrew was released as a product improvement

APPLICATION: NT and N14 Engines
(See Parts & Service News AA97079 for chassis application.)

DESCRIPTION:

A new connecting rod capscrew, P/N 1310 722 H1 has been released for the NT and N15 Engines. The new connecting rod capscrew was released as a product improvement.

The new connecting rod capscrew, P/N 1310 722 H1 replaces the connecting rod capscrew, P/N 1295 487 H1. Connecting rod capscrew, P/N 1295 487 H1 is no longer available.

The two capscrews can be identified by markings on their heads. The markings on the head of the new capscrew, P/N 1310 722 H1 are "F-C" followed by "USA". See Figure 1.

The markings on the old connecting rod capscrew, P/N 1295 487 H1, are the P/N "3055171", "USA", and a four letter code. See Figure 2.

The new capscrew was released for production and service on November 25, 1996. The engine first serial number is 11830222.

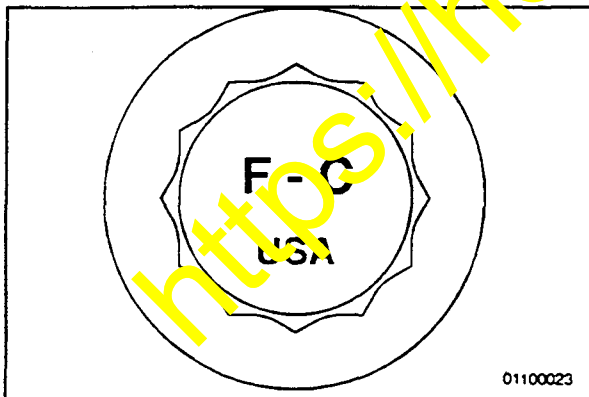


Fig. 1

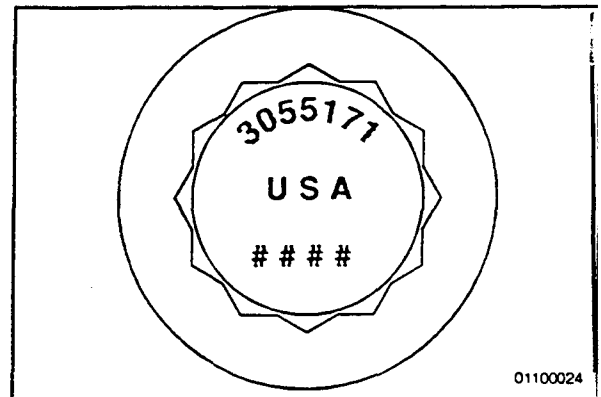


Fig. 2

NOTE: THIS IS A PRODUCT IMPROVEMENT AND IS NOT SUBJECT TO A CAMPAIGN.

<https://hespareparts.com/>