

# PARTS & SERVICE NEWS

REF NO.	AA98075
DATE	06 JULY, '98

Page 1 of 6

**SUBJECT:** TRANSMISSION OIL LEVEL SIGHT GAUGE

**PURPOSE:** To Equip Older Model 330M Trucks With Current Style Transmission Sight Gauge

**APPLICATION:** All 330M Haul Trucks (BFP41), Prior To: S/N A10190-BFP42

**FAILURE CODE:** 151B99

**DESCRIPTION:** This Parts & Service News announces Part Numbers to equip model 330M Haul Trucks (All BFP41, prior to S/N A10190-BFP42) with the current style Transmission Sight Gauge.

### Introduction:

PSN AT96180, dated Nov. 26, 1996, released information to change the transmission oil level sight gauge from two round sight gauges ("Engine Stopped / Engine Running") to a "stick-type" liquid level gauge. The information released in AT96180 applied only to HD785-3 trucks.

This PSN provides the necessary information to equip an older model 330M with the "stick-type" liquid level gauge which is used currently on HD785-3 and 330M trucks.

Follow instructions published in AT96180, dated Nov. 26, 1996, **except as follows:**

### List of parts:

Order the Parts as shown in FIG. 16192, page 2 and Parts listing, page 3.

### Additional Parts:

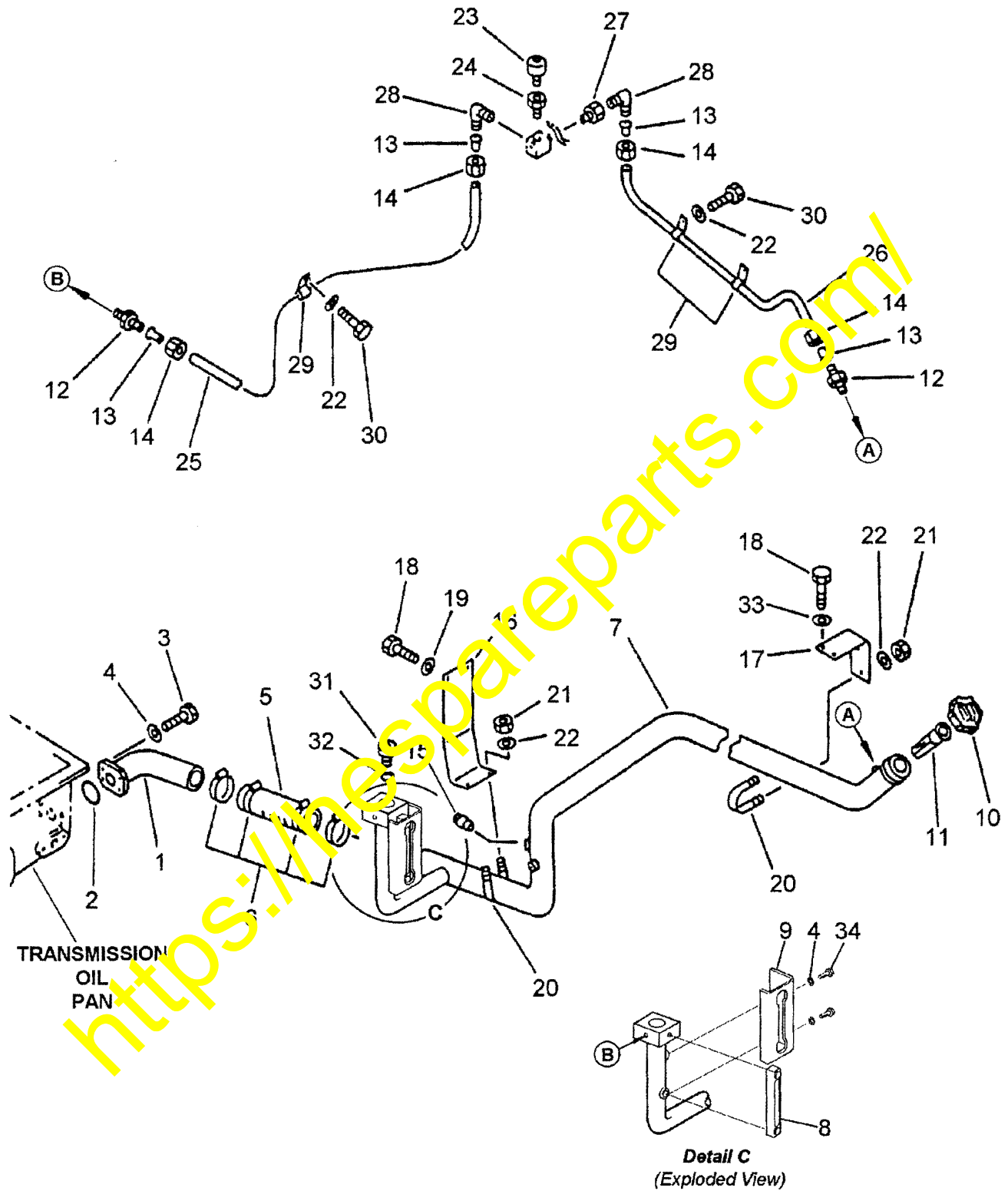
Order one (1) each of the following Decals:

**561-93-3A110 Decal, Transmission Oil Level** - To be mounted next to new gauge.

Refer to Item 13, Detail "B", FIG. 16185, Page 4. Refer also to page 6 of 6.

**WB2416 Decal, Transmission Oil Level Check** - To be mounted on Transmission Oil Pan.

Refer to Item 10, Detail "B", FIG. 16185, Page 4. Refer also to page 6 of 6.

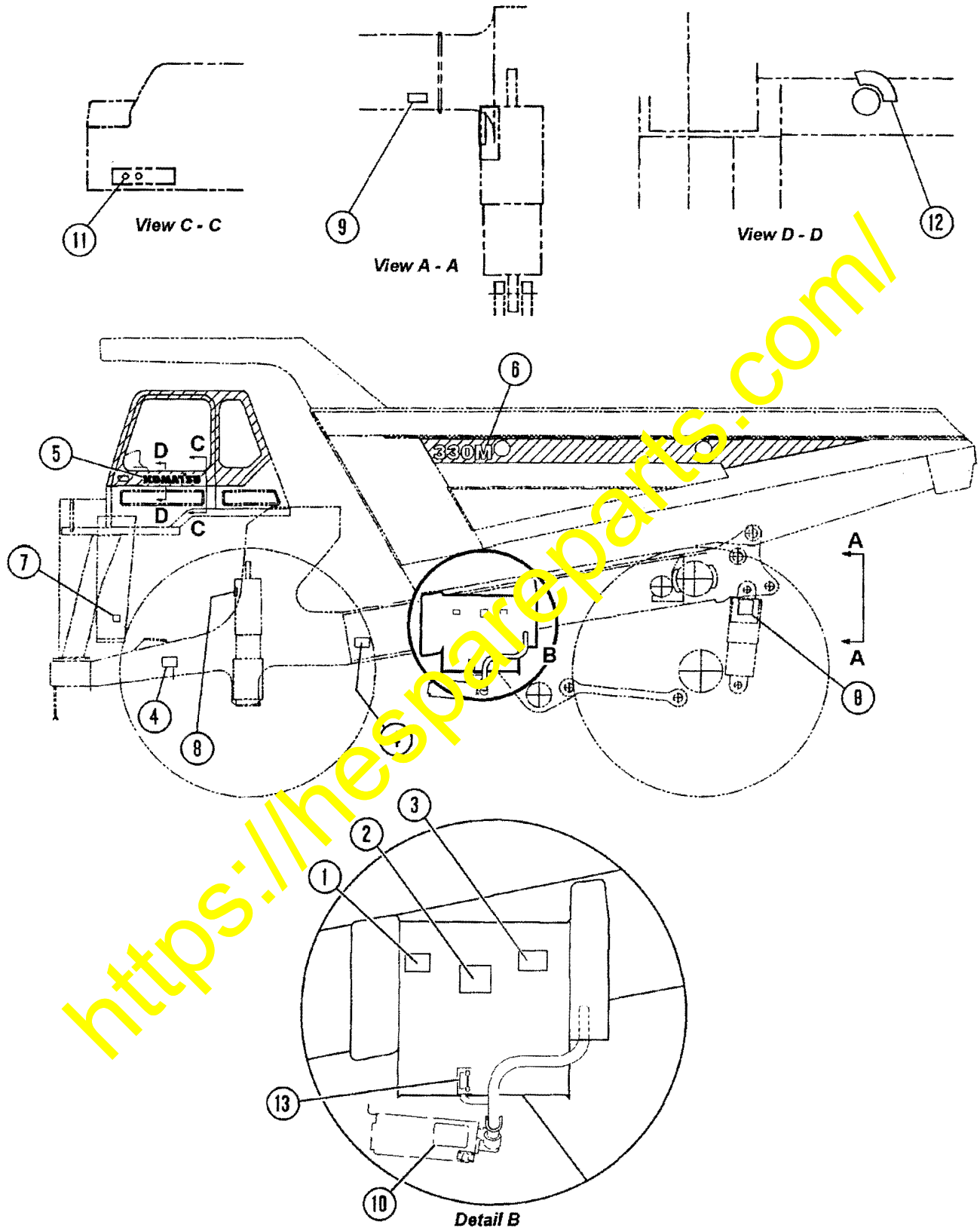


**FIG. 16192**  
**TRANSMISSION PIPING**

## FIGURE 16192

## TRANSMISSION PIPING

REF NO.	PART NO.	QTY.	DESCRIPTION
1.00	561-16-6A510	1	TUBE
2.00	07000-22060	1	O-RING
3.00	07372-21240	4	BOLT
4.00	01643-51232	6	WASHER
5.00	07260-25822	1	HOSE
6.00	205-09-61120	4	CLAMP
7.00	561-16-A1270	1	TUBE
8.00	561-16-A1280	1	GAUGE, SIGHT
9.00	561-16-A1290	1	COVER
10.00	07092-01000	1	CAP
11.00	07056-10045	1	STRAINER
12.00	07836-00817	2	CONNECTOR
13.00	07831-00813	4	SLEEVE
14.00	07832-00817	4	NUT
15.00	07042-20415	1	PLUG
16.00	561-16-61542	1	BRACKET
17.00	561-16-61551	1	BRACKET
18.00	01010-81230	4	BOLT
19.00	01643-31230	2	WASHER
20.00	07283-26163	2	CLAMP
21.00	01599-01011	4	NUT
22.00	01643-31032	1	WASHER
23.00	07030-10252	1	BREATHER
24.00	07326-10302	1	ADAPTOR
25.00	07822-00816	1	TUBE
26.00	07322-00817	1	TUBE
27.00	58201-02910	1	NIPPLE
28.00	07834-00817	2	ELBOW
29.00	03036-01414	3	CLIP
30.00	01010-81020	3	BOLT
31.00	07040-13618	1	PLUG
32.00	07002-23634	1	O-RING
33.00	01643-31232	2	WASHER
34.00	01010-81220	2	BOLT



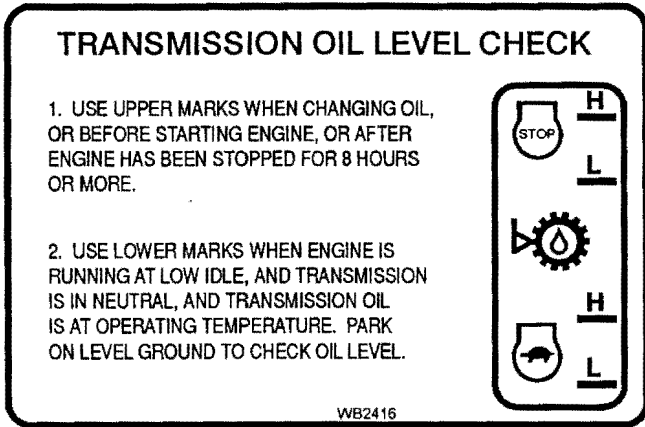
**FIG. 16185**  
**DECALS & WARNING INSTALLATION**

## FIGURE 16185

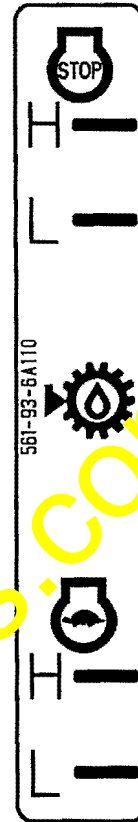
## DECALS &amp; WARNINGS INSTALLATION

REF NO.	PART NO.	QTY.	DESCRIPTION
1.00	EB9091	1	DECAL, STEERING HOIST OIL
2.00	09653-13000	1	PLATE, SAFETY
3.00	EB9090	1	DECAL, BRAKE COOLING OIL
4.00	WA9705	4	DECAL, PLATE WARNING
5.00	EB9089	1	DECAL, HAULPAK
5.01	09690-C0630	1	DECAL, KOMATSU
6.00	WB2393	2	DECAL, 330M
7.00	09667-33000	2	PLATE, SAFETY ENG COVER
8.00	EB9099	4	DECAL, DANGER
9.00	EB9097	1	DECAL, AIR TANK
10.00	WB2416	1	DECAL, TRANS OIL CHECK
11.00	09679-01803	1	PLATE HAZARD WARNING
12.00	561-93-61380	1	PLATE START SWITCH
12.01	WB2399	1	NAME PLATE SERIAL NUMBER
12.02	04418-13060	6	SCREW
13.00	561-93-6A110	1	DECAL, TRANSM OIL LEVEL

<https://hespareparts.com/>



WB2416 TRANSMISSION OIL LEVEL CHECK DECAL



561-93-6A110 TRANSMISSION OIL LEVEL DECAL

<https://hespareparts.com/>