

PARTS & SERVICE NEWS

REF NO.	AA98098
DATE	06 JULY, 1998

Page 1 of 2

SUBJECT: AIR SYSTEM IMPROVEMENT KIT

PURPOSE: INTRODUCE MK3897 AIR SYSTEM IMPROVEMENT KIT

APPLICATION: 330M - ALL WITH CUMMINS KTA-38 ENGINE

FAILURE CODE: AJ3065

DESCRIPTION: REDESIGNED AIR COMPRESSOR OUTLET PIPING TO REDUCE CONTAMINATION ENTERING THE AIR CONTROLS OF THE TRUCK AND THE ADDITION OF A NEW AIR TANK AND LONGER LINES TO COOL THE AIR AFTER IT LEAVES THE COMPRESSOR.

Introduction:

The air compressor outlet piping for the 330M Haulpak truck equipped with the Cummins KTA-38 engine has been redesigned to reduce water and oil contamination entering the air controls of the truck. The addition of a new air tank and longer lines to cool the air after it leaves the compressor is incorporated in the change.

MK3897 AIR SYSTEM IMPROVEMENT KIT

The change described above can be field installed on existing trucks using MK3897 kit (refer to page 2 for parts list).

When the MK3897 kit is installed, it will also be necessary to clean the various air system valves, especially brake system valves, tanks and air lines on the truck. The contamination present is usually in the form of a sticky carbon type material and water. Seals in valves can occasionally be cleaned, but most will require replacement. The air compressor will also need to be cleaned, or replaced, due to the contamination. A worn compressor will continue to by-pass oil and continue to contaminate valves, if not replaced or rebuilt.

NOTE:

The parts required for cleaning/repairing the air system are not included in the MK3897 kit. Order these parts by referencing the vehicle Parts Catalog.

MK3897 Kit Content			
Item No.	Qty.	Part No.	DESCRIPTION
Ref.	1	EG2568	Ref. Drawing
1	1	HA1205	Hose Str.
2	2	WB1106	Fitting Adapter
3	1	WA4649	Clamp Vinyl
4	22	0164331032	Flat Washer
5	9	0101081016	Bolt
6	1	EH1038	Hose, Overflow
7	1	CD9705	Clamp
8	2	0732610402	Fitting, Adapter
9	1	23S4411330	Valve, Drain
10	1	5654411460	Chain
11	1	5663542350	Valve Assy. Safety
12	1	0732330400	Elbow
13	2	0157101016	Seat
14	1	WB1094	Fitting, Adapter
15	1	WB0299	Fitting, 45°
16	2	0157320207	Seat
17	9	TR9441	Clamp, Vinyl
18	1	WB0984	Fitting, Adapter
19	1	EG2569	Bracket Str.
20	4	0164351032	Flat Washer
21	8	0101081020	Bolt
22	1	5663542690	Tank, Air
23	2	EG2565	U - Bolt
24	4	WA0720	F/W Hardened
25	4	TG9225	Nut, Lock
26	2	0704200415	Plug
27	1	WB1093	Fitting, Adapter
28	2	WB1087	Fitting, 90°
29	4	VN993	Clamp, Vinyl
30	4	0158011011	Nut, Lock
31	2	HA7528	Hose Str. Teflon
32	1	EC3907	Air Dryer Assy.
33	5	0101081025	Bolt
34	1	0158011008	Nut
35	1	WB0267	Fitting, 90°
36	1	WB0274	Fitting, 90°
37	3	TG2562	Clamp, Vinyl
38	1	5613562830	Joint
39	1	HA0971	Hose Str.
40	3	0803603014	Clip
41	3	5660641290	Insulator

NOTE:

Drains for air tanks must be kept in working order and activated every shift to ensure accumulated water and oil is evacuated.

PC0036 HEATED DRAIN VALVE

For use in cold climates, an optional heated moisture ejection drain valve (PC0036) may be added to the drain ports of air tanks.

The electrical hook-up for this valve is to be connected to the 24VDC Brake Light circuit of the truck. Each time the brake light is activated, the valve will automatically drain the air tank of any accumulated condensation or oil contaminants. This action consists in keeping the system dry and corrosion free and thereby contributes to a longer service life of all air system components.

The valve is also equipped with a 24VDC heating coil to prevent freezing of the drain, and a manual ejector plunger for static operation.

Rated Voltage/Current for the heater: 24V / 0.5A

Maximum Operating Pressure: 170 psi (1172 kPa)

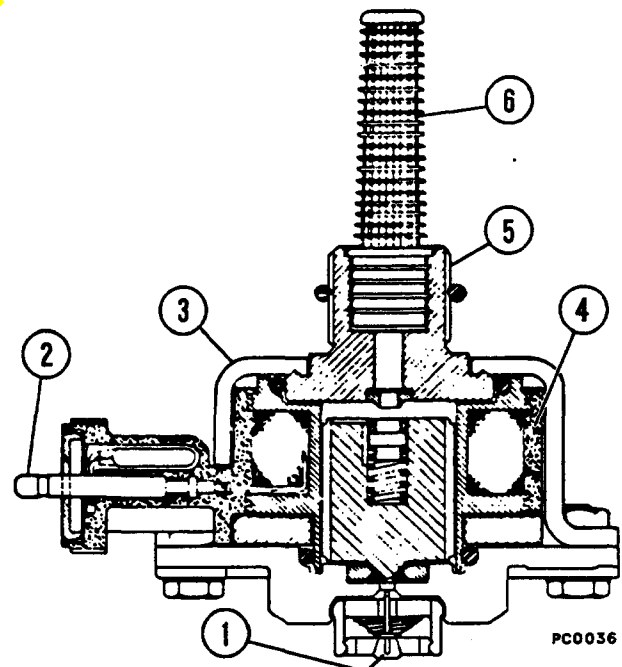


FIGURE 1. PC0036 HEATED DRAIN VALVE

- | | |
|-------------------------|-------------------------|
| 1. Manual Drain | 4. Heater/Solenoid Coil |
| 2. Electrical Connector | 5. 1/4-18 NPTF Thread |
| 3. Zinc-Plated Housing | 6. Built-In Filter |