

PARTS & SERVICE NEWS

REF NO.	AA99028
DATE	January 25, 1999

Page 1 of 5

SUBJECT: HEATER SHUTOFF VALVE

PURPOSE: To provide shutoff of hot water to heater core.

APPLICATION: 830 Graders Serial Number 100496 and up
850 Graders Serial Number 100497 and up
870 Graders Serial Number 100481 and up
GD530A/AW Graders Serial Number 200840 and up
GD650A/AW Graders Serial Number 200840 and up
GD670A/AW Graders Serial Number 200840 and up

FAILURE CODE: 822015

DESCRIPTION:

Introduction:

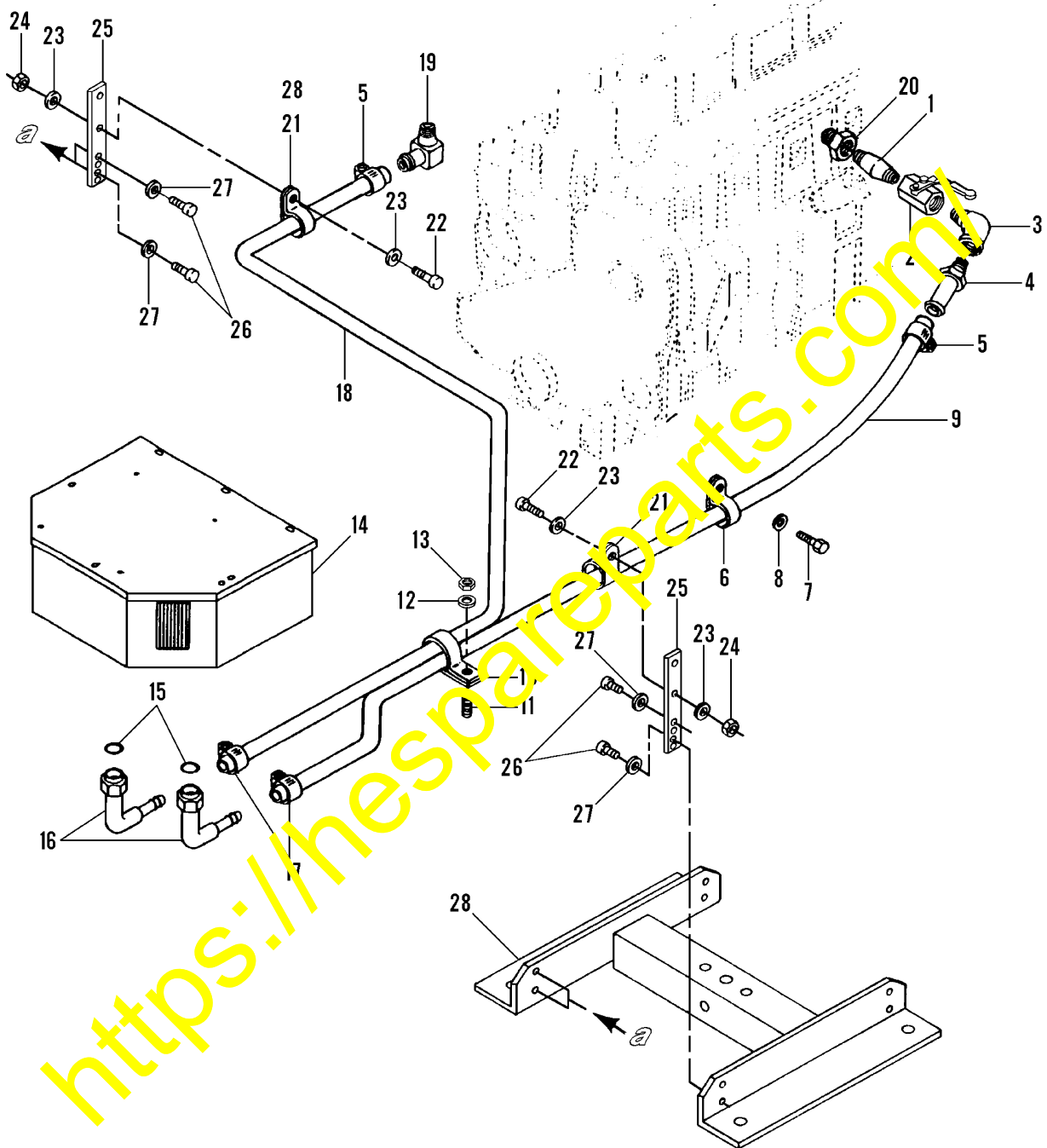
An optional shutoff valve has been added to prevent hot water from entering the heater core when operating the air conditioning system. This valve can be added to existing systems by changing the outlet nipple and elbow. See items 1,2 and 3 on the following pages.

For individual service part numbers, refer to the subsequent pages of this **PARTS & SERVICE NEWS**. Use this publication along with applicable parts book until such time as this information is incorporated into the parts book.

– NOTE –

The information in this **PARTS & SERVICE NEWS** does not authorize or imply any obligation on the part of Komatsu America International Company to provide reimbursement for any expenses. Machines requiring part repair or part replacement during the machine warranty are covered under normal warranty. Out-of-warranty machines are the responsibility of the distributor/customer.

830, GD530A/AW HEATER HOSE INSTALLATION WITH SHUTOFF VALVE

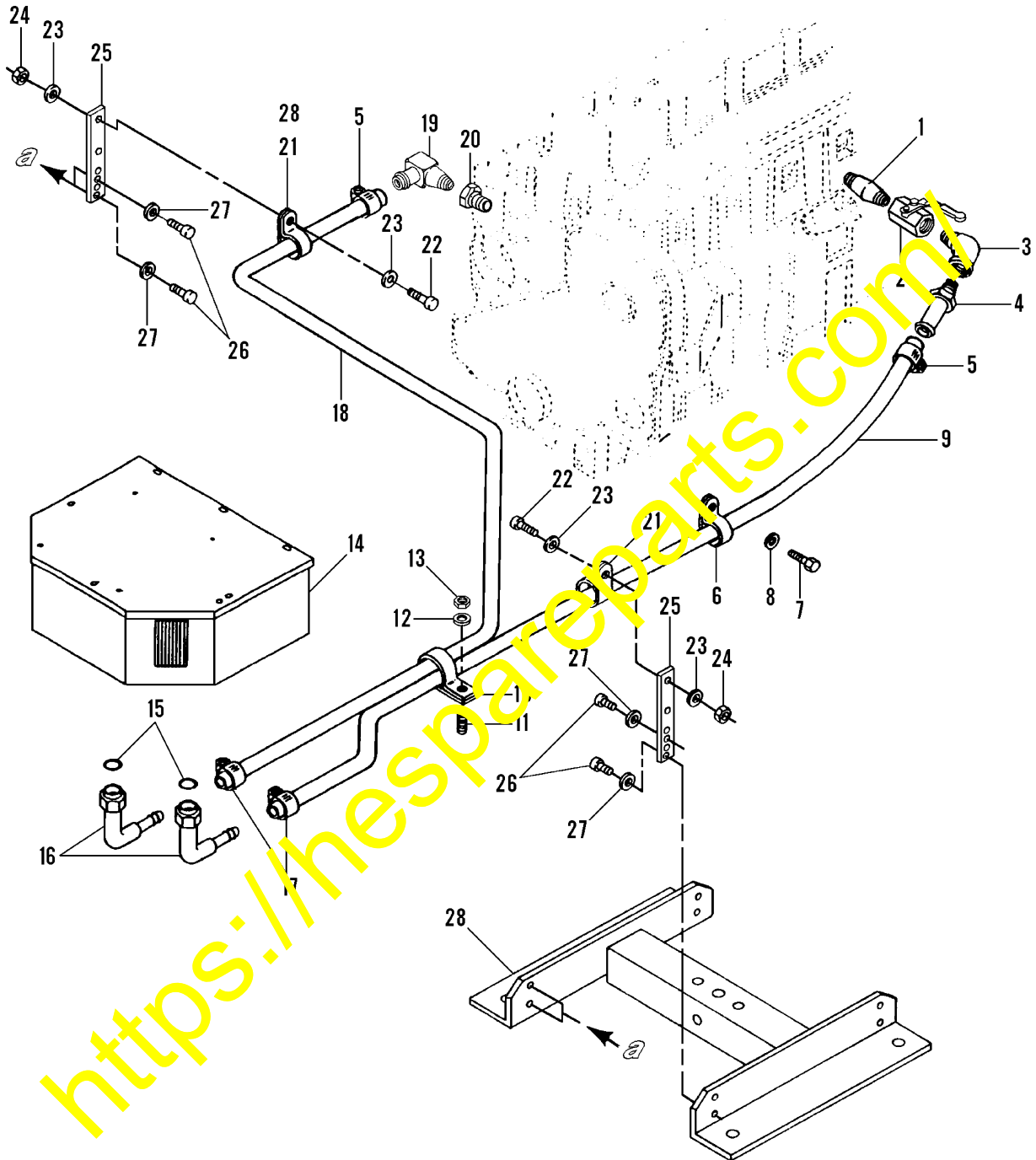


A13DZ031

**830, GD530A/AW HEATER HOSE INSTALLATION
WITH SHUTOFF VALVE**

Item	Part Number	Description	Qty.	Ref.
1	140 537	NIPPLE, PIPE	1	
2	120 579 H45	VALVE, BALL	1	
3	86 188	ELBOW, STREET	1	
4	1283 754 H91	FITTING, ORIFICE	1	
5	27 861 R1	CLAMP, HOSE	2	
6	28 135 R1	CLAMP, HOSE	1	
7	30 041 R1	BOLT	1	
8	25 536 R1	WASHER, FLAT	1	
9	1439 821 H1	HOSE, RED - 92"	1	F1
	306 132 C2	STRAP, TIE	1	
		<i>HEATER HOSE TO ENGINE BREATHER HOSE</i>		
10	27 843 R1	CLAMP, HOSE	1	F2
11	105 899	STUD, WELD	1	
12	25 553 R1	WASHER, FLAT	1	
13	17 044 R1	NUT, HEX	1	
14		HEATER ASSEMBLY (SEE APPLICABLE PARTS BOOK)		
15	371 544 R1	.O-RING	2	
16	1431 254 H1	.FITTING, HOSE - 90°	2	
17	27 861 R1	CLAMP, HOSE	2	
18	364 359 C1	HOSE, BLACK - 51"	1	F1
19	899 720 R1	ELBOW	1	
20	144 042	BUSHING, REDUCER	1	
21	299 416 C1	CLAMP	2	F4
22	140 483 H	BOLT	2	F4
23	25 553 R1	WASHER, FLAT	4	F4
24	17 044 R1	NUT, HEX	2	F4
25	1435 077 H1	BAR, HOSE HOLD DOWN	2	F4
26	26 309 R1	BOLT, SELF-LOCKING	4	F4
27	25 553 R1	WASHER, FLAT	4	F4
28		SUPPORT WELDMENT, ENGINE (SEE APPLICABLE PARTS BOOK)		
		F1 - CUT TO LENGTH FROM BULK HOSE		
		F2 - WITH AIR CONDITIONER, USE THE FOLLOWING:		
9	1433 130 H1	CLAMP, HOSE	1	
	1431 377 H1	SLEEVE, HOSE WRAP - 20"	1	F3
		F3 - CUT TO LENGTH FROM BULK HOSE WRAP		
		F4 - S/N 203163 & UP		

850, 870, GD650A/AW, GD670A/AW HEATER HOSE INSTALLATION
WITH SHUTOFF VALVE



A13DZ032

**850, 870, GD650A/AW, GD670A/AW HEATER HOSE INSTALLATION
WITH SHUTOFF VALVE**

Item	Part Number	Description	Qty.	Ref.
1	140 537	NIPPLE, PIPE	1	
2	120 579 H45	VALVE, BALL	1	
3	86 188	ELBOW, STREET	1	
4	864 440 R1	INSERT, BEADED	1	
5	27 861 R1	CLAMP, HOSE	2	
6	299 416 C1	CLAMP, HOSE	1	
7	30 019 R1	BOLT	1	
8	30 184 R1	WASHER, FLAT	1	
9	1439 821 H1	HOSE, RED - 80"	1	F1
10	27 843 R1	CLAMP, HOSE	1	F2
11	105 899	STUD, WELD	1	
12	25 553 R1	WASHER, FLAT	1	
13	17 044 R1	NUT, HEX	1	
14		HEATER ASSEMBLY (SEE APPLICABLE PARTS BOOK)		
15	371 544 R1	.O-RING	2	
16	1431 254 H1	.FITTING, HOSE - 90°	2	
17	27 861 R1	CLAMP, HOSE	2	
18	364 359 C1	HOSE, BLACK - 60"	1	F1
19	899 720 R1	ELBOW	1	
20	144 042	BUSHING, REDUCER	1	
21	299 416 C1	CLAMP	2	F4
22	140 483 H	BOLT	2	F4
23	25 553 R1	WASHER, FLAT	4	F4
24	17 044 R1	NUT, HEX	2	F4
25	1435 077 H1	BAR, HOSE HOLD DOWN	2	F4
26	26 309 R1	BOLT, SELF-LOCKING	4	F4
27	25 553 R1	WASHER, FLAT	4	F4
28		SUPPORT WELDMENT, ENGINE (SEE APPLICABLE PARTS BOOK)		

F1 - CUT TO LENGTH FROM BULK HOSE

F2 - WITH AIR CONDITIONER, USE THE FOLLOWING:

9	1433 150 H1	CLAMP, HOSE	1	
---	-------------	-------------------	---	--

	1431 377 H1	SLEEVE, HOSE WRAP - 20"	1	F3
--	-------------	-------------------------------	---	----

F3 - CUT TO LENGTH FROM BULK HOSE WRAP

F4 - 850, 870 S/N 202487 & UP

GD650A/AW, GD670A/AW S/N 203087 & UP