

PARTS & SERVICE NEWS

REF NO.	AA99063
DATE	March 12, 1999

Page 1 of 5

SUBJECT: INTRODUCTION OF A NEW QUICK RETURN VALVE FOR THE TRANSMISSION CONTROL VALVE (MECHANICAL MODULATION SPECIFICATION) TO IMPROVE THE FUNCTIONAL RELIABILITY

PURPOSE: To introduce a newly-prepared quick return valve sub-assembly for use in the transmission control valve assembly (mechanical modulation spec.) Which can enhance the reliability of the valve functions

APPLICATION: WA300-3 Wheel Loaders, S/N 50001 and up
 WA320-3 Wheel Loaders, S/N 50001 and up
 WA320-3L Wheel Loaders, S/N A30424
 WA350-3 Wheel Loaders, S/N 50001 and up
 WA380-3 Wheel Loaders, S/N 50001 and up
 WA400-3 Wheel Loaders, S/N 50001 and up
 WA420-3 Wheel Loaders, S/N 50001 and up
 WA450-3 Wheel Loaders, S/N 50001 and up
 WA470-3 Wheel Loaders, S/N 50001 and up

FAILURE CODE: 159F20

DESCRIPTION:

Introduction:

This **PARTS & SERVICE NEWS** will introduce a new quick return valve sub-assembly equipped with a filter for use in the transmission control valve assembly (mechanical modulation spec.). The purpose of this new sub-assembly is to prevent foreign substances from entering into the quick return valve section, thus enhancing the reliability of the valve functions.

List of parts:

Part Number	Part Name	Qty.	Remarks	
• 714-07-17500	Valve sub assembly	1	Quick return valve sub-assembly	
•• 714-07-17521 (714-07-17520)	Plug (Plug)	1 (1)		Component parts of the quick return valve sub-assembly
•• 415-15-15470	Plug	1		
••714-07-17510	Valve	1	Remain the same	
••714-01-15440	Spring	1		
••04260-01270	Ball	1		
••714-07-17540	Screen	1		
••714-07-17550	Plate	1		
714-07-17941	Gasket		for reworking purposes	

CONTENTS OF THE MODIFICATION

A screen filter has been built into the quick return sub-assembly for use in the upper valve section of the transmission control valve assembly to prevent clogging of the internal orifice of the quick return valve by foreign substances ($\phi 0.9$).

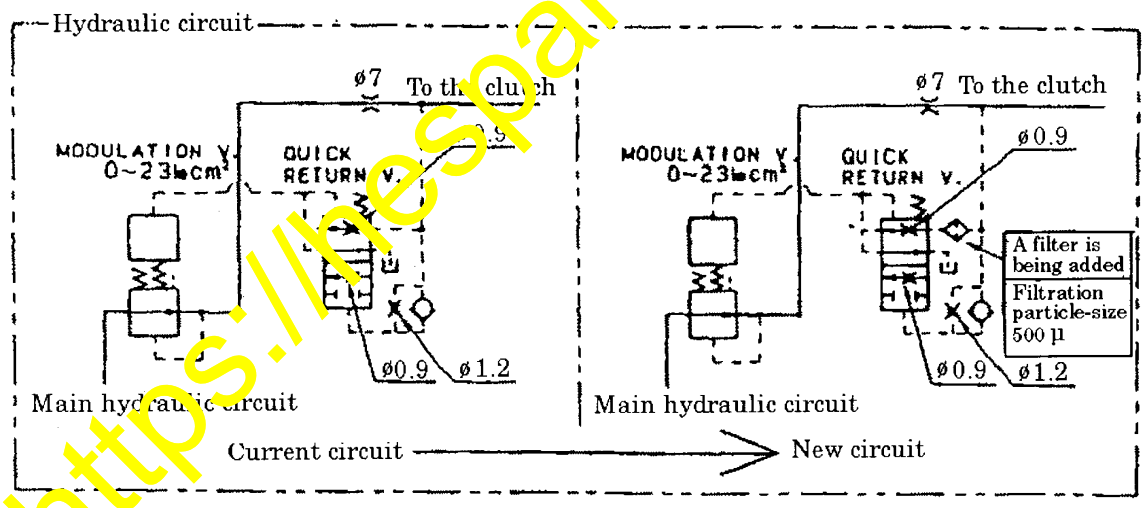
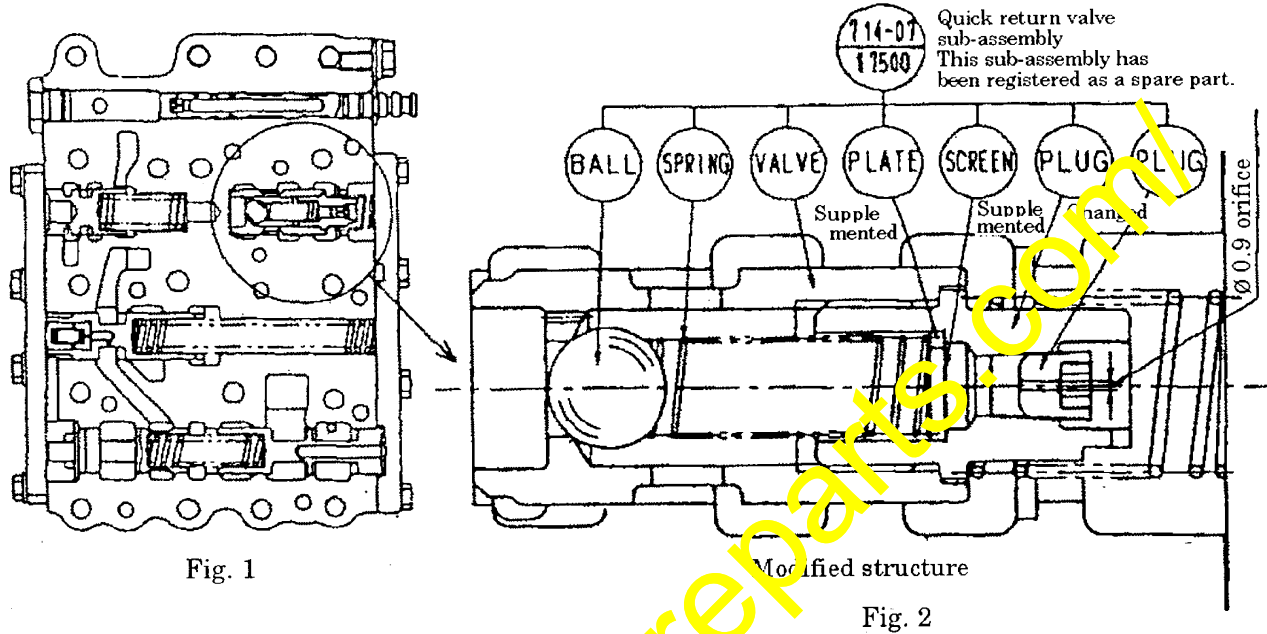


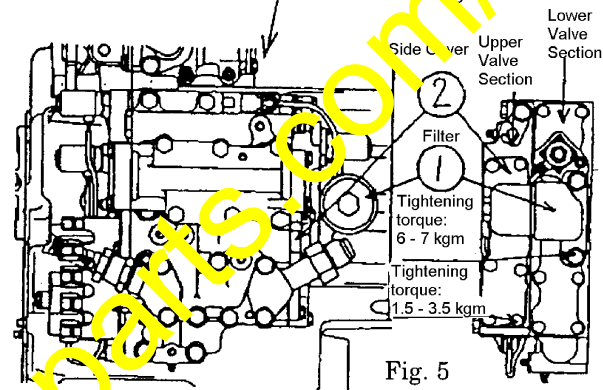
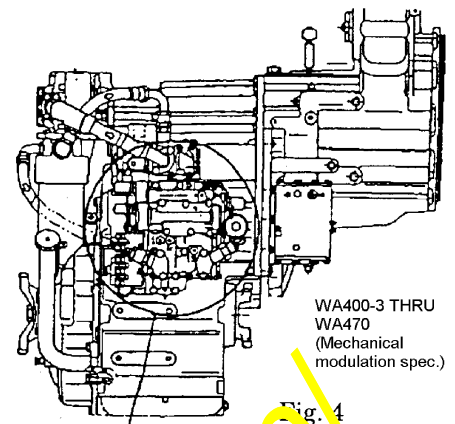
Fig. 3

Modification procedures:

(1) Remove the pilot filter ① of the transmission control valve assembly located on the transmission side of the transmission valve assembly and detach the side cover ② of the upper valve section.

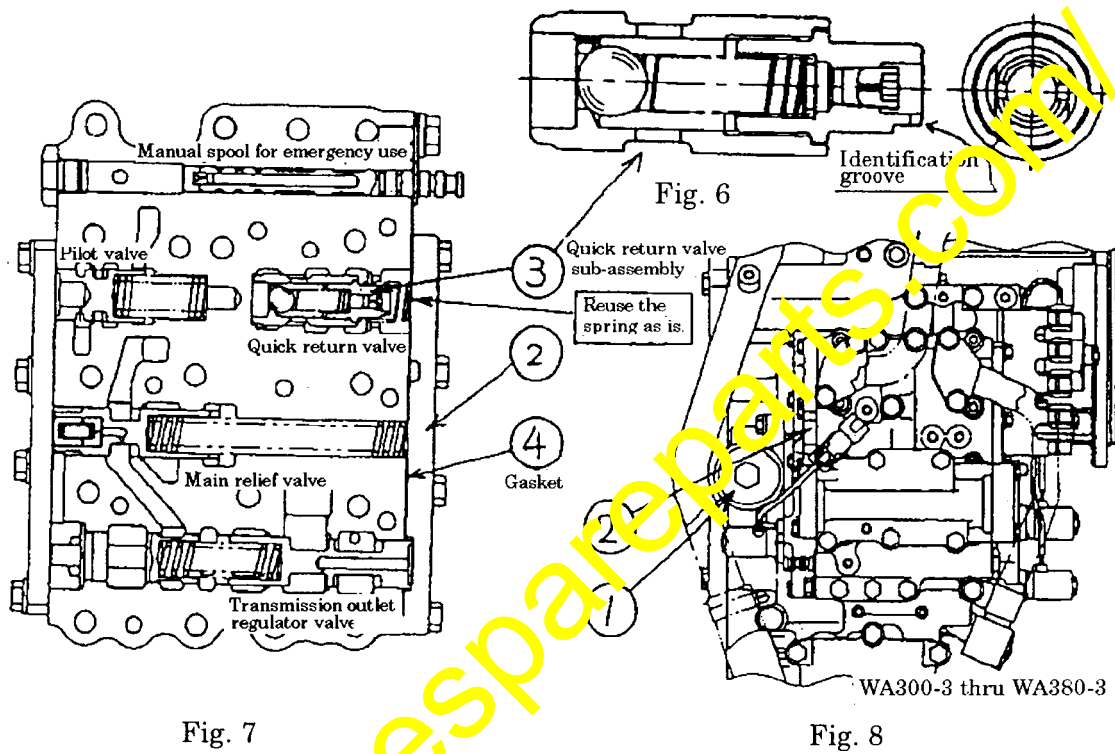
When doing this, pay attention to the fact that spring forces at 32kg and 7kg of the springs for the mail relief valve and transmission outlet regulator valve, respectively, are being applied to the side cover and be very careful when removing the side cover (Refer to Figs 5 & 7).

(2) Replace the quick return valve sub-assembly ③ located inside the upper valve section with the improved sub-assembly. The improved sub-assembly carries an identification groove at its end and check if this grooving is provided to make sure the prepared sub-assembly is the correct part. (Refer to Figs 6 & 7)



(3) Install the side cover ② and the pilot filter ① back to their original positions. At this time, replace the gasket ④ (714-07-17491) for the side cover with a new part.

NOTE: The transmission control valve assembly is being installed in the opposite directions between models WA400-3 thru WA470-3 and model WA300-3 thru WA380-3. Consequently, be careful not to make positioning error of the side cover. (Refer to Fig. 8)



AT98066jf:JME