

# PARTS & SERVICE NEWS

|         |              |
|---------|--------------|
| REF NO. | AA99108      |
| DATE    | June 8, 1999 |

Page 1 of 5

**SUBJECT:** UPGRADE CIRCLE GEAR CASE

**PURPOSE:** TO PROVIDE SERVICE PARTS FOR CIRCLE DRIVE GEAR CASES USED ON THE BELOW LISTED GRADERS.

**APPLICATION:** GD530A/AW Graders Serial Number 203840 & Up  
GD650A/AW Graders Serial Number 203840 & Up  
GD670A/AW Graders Serial Number 203840 & Up  
830 Graders Serial Number 203840 & Up  
850 Graders Serial Number 203840 & Up  
870 Graders Serial Number 203840 & Up

**FAILURE CODE:** 7C3F10

**DESCRIPTION:**

## Introduction:

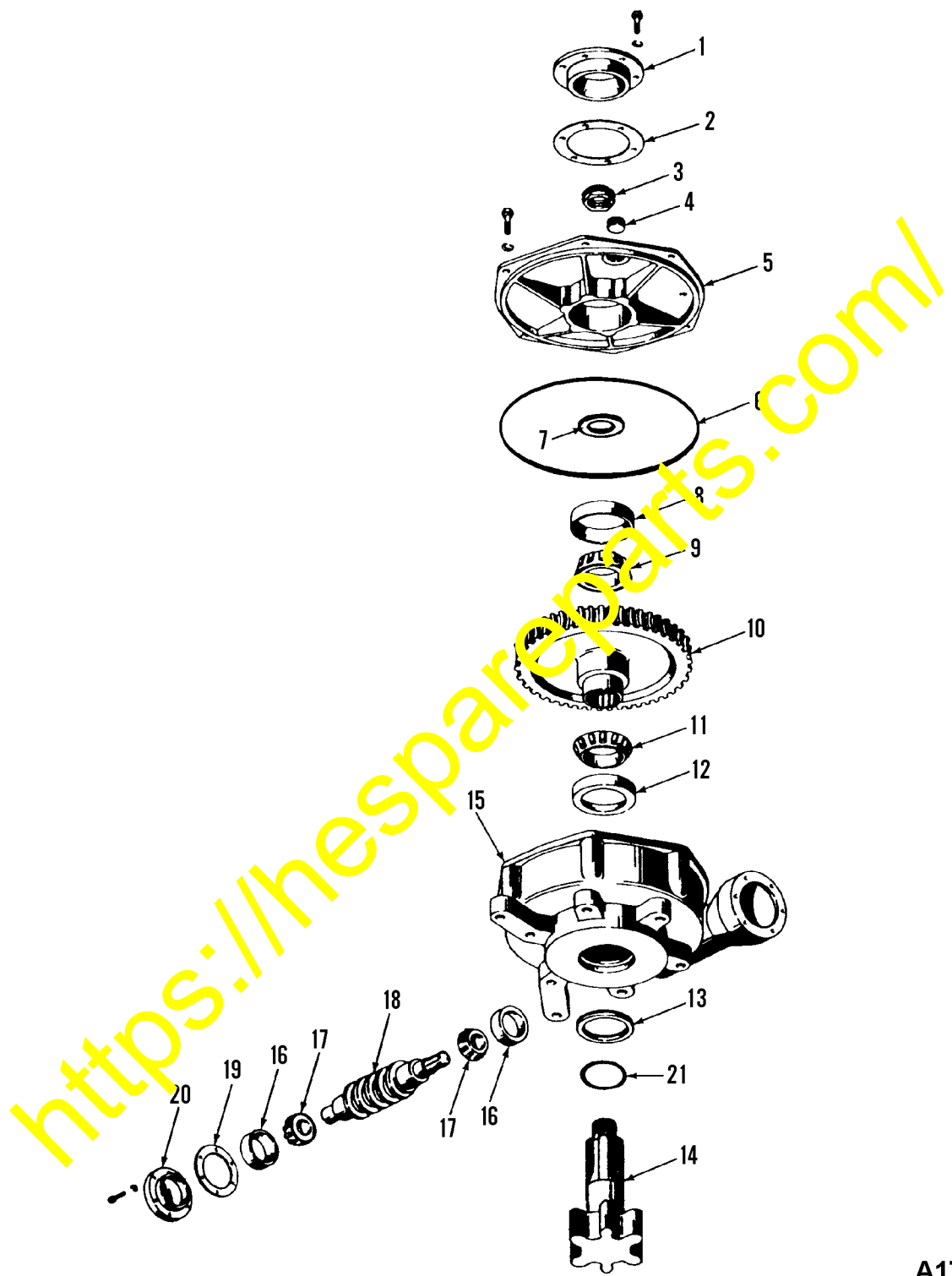
The circle drive gear case cover has been modified (material and profile) to accommodate an o-ring groove to better seal the case assembly against oil leakage. For units below the above serial number, refer to PARTS & SERVICE NEWS **AA97040A** for the procedure to seal the case from leaking.

For individual service part numbers, refer to the subsequent pages of this **PARTS & SERVICE NEWS**. Use this publication along with applicable parts book until such time as this information is incorporated into the parts book.

## —NOTE—

The information in this **PARTS & SERVICE NEWS** does not authorize or imply any obligation on the part of Komatsu America International Company to provide reimbursement for any expenses. Machines requiring part repair or part replacement during the machine warranty are covered under normal warranty. Out-of-warranty machines are the responsibility of the distributor/customer.

### CIRCLE REVERSE GEAR CASE

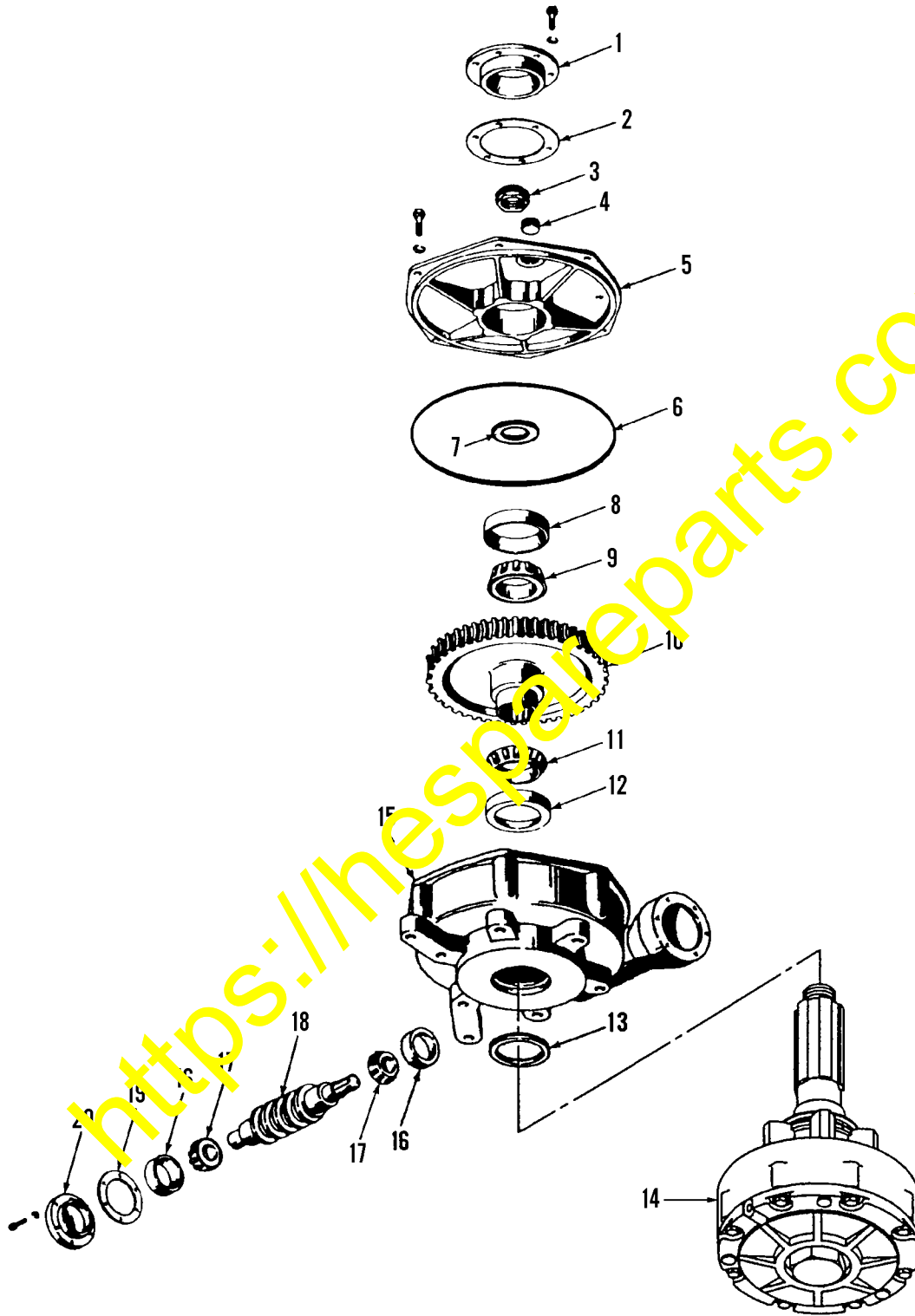


A17GV004

## CIRCLE REVERSE GEAR CASE

| Item | Part Number  | Description                              | Qty. | Ref. |
|------|--------------|------------------------------------------|------|------|
|      | 1430 897 H91 | GEAR CASE ASSEMBLY, CIRCLE REVERSE ..... | 1    |      |
| 1    | 60 556       | .RETAINER, BEARING .....                 | 1    |      |
|      | 24 841 R1    | .BOLT .....                              | 6    |      |
|      | 25 534 R1    | .WASHER, FLAT .....                      | 6    |      |
| 2    | 28 762 A     | .SHIM - 0.003 .....                      | 3    |      |
|      | 55 073       | .SHIM - 0.005 .....                      | 3    |      |
|      | 28 762 B     | .SHIM - 0.020 .....                      | 2    |      |
| 3    | 58 420       | .NUT, LOCK.....                          | 1    |      |
| 4    | 85 080       | .PLUG, PIPE - OIL FILL .....             | 1    |      |
|      | 74 947       | .BREATHER .....                          | 1    |      |
| 5    | 1431 165 H93 | .COVER, CIRCLE REVERSE CASE.....         | 1    |      |
|      | 80 295 R1    | .BOLT .....                              | 6    |      |
|      | 25 546 R1    | .WASHER, FLAT .....                      | 6    |      |
| 6    | 26 533 R1    | .O-RING.....                             | 1    |      |
| 7    | 59 490 A     | .WASHER.....                             | 1    |      |
| 8    | 26 233       | .CUP, BEARING .....                      | 1    |      |
| 9    | 28 795       | .CONE, BEARING .....                     | 1    |      |
| 10   | 60 235 A     | .GEAR, CIRCLE REVERSE .....              | 1    |      |
| 11   | 42 212       | .CONE, BEARING .....                     | 1    |      |
| 12   | 42 215       | .CUP, BEARING .....                      | 1    |      |
| 13   | 1269 175 H1  | .SEAL, OIL.....                          | 1    |      |
| 14   | 93 831       | .SHAFT, PINION .....                     | 1    |      |
| 15   | 39 214 B     | .CASE, CIRCLE REVERSE .....              | 1    |      |
|      | 444 693      | .PLUG, PIPE - OIL LEVEL & DRAIN.....     | 2    |      |
| 16   | 28 796       | .CUP, BEARING .....                      | 2    |      |
| 17   | 28 797       | .CONE, BEARING .....                     | 2    |      |
| 18   | 60 230       | .WORM, CIRCLE REVERSE .....              | 1    |      |
| 19   | 28 781A      | .SHIM - 0.003 .....                      | 2    |      |
|      | 28 781B H45  | .SHIM - 0.005 .....                      | 4    |      |
|      | 28 781C      | .SHIM - 0.020 .....                      | 5    |      |
| 20   | 28 765       | .CAP, END .....                          | 1    |      |
|      | 24 841 R1    | .BOLT .....                              | 6    |      |
|      | 25 534 R1    | .WASHER, FLAT .....                      | 6    |      |
| 21   | 91 561       | .SEAL, OIL SLINGER.....                  | 1    |      |

### CIRCLE REVERSE GEAR CASE WITH SLIP CLUTCH



A17GV005

**CIRCLE REVERSE GEAR CASE  
WITH SLIP CLUTCH**

| Item | Part Number  | Description                                  | Qty. | Ref. |
|------|--------------|----------------------------------------------|------|------|
|      | 1430 897 H91 | GEAR CASE ASSEMBLY, CIRCLE REVERSE .....     | 1    |      |
| 1    | 60 556       | .RETAINER, BEARING .....                     | 1    |      |
|      | 24 841 R1    | .BOLT .....                                  | 6    |      |
|      | 25 534 R1    | .WASHER, FLAT .....                          | 6    |      |
| 2    | 28 762 A     | .SHIM - 0.003 .....                          | 3    |      |
|      | 55 073       | .SHIM - 0.005 .....                          | 3    |      |
|      | 28 762 B     | .SHIM - 0.020 .....                          | 2    |      |
| 3    | 58 420       | .NUT, LOCK.....                              | 1    |      |
| 4    | 85 080       | .PLUG, PIPE - OIL FILL .....                 | 1    |      |
|      | 74 947       | .BREATHER .....                              | 1    |      |
| 5    | 1431 165 H93 | .COVER, CIRCLE REVERSE CASE.....             | 1    |      |
|      | 80 295 R1    | .BOLT .....                                  | 6    |      |
|      | 25 546 R1    | .WASHER, FLAT .....                          | 6    |      |
| 6    | 26 533 R1    | .O-RING.....                                 | 1    |      |
| 7    | 59 490 A     | .WASHER.....                                 | 1    |      |
| 8    | 26 233       | .CUP, BEARING .....                          | 1    |      |
| 9    | 28 795       | .CONE, BEARING .....                         | 1    |      |
| 10   | 60 235 A     | .GEAR, CIRCLE REVERSE .....                  | 1    |      |
| 11   | 42 212       | .CONE, BEARING .....                         | 1    |      |
| 12   | 42 215       | .CUP, BEARING .....                          | 1    |      |
| 13   | 1269 175 H1  | .SEAL, OIL .....                             | 1    |      |
| 14   |              | .CLUTCH ASSEMBLY (SEE APPLICABLE PARTS BOOK) |      |      |
| 15   | 39 214 B     | .CASE, CIRCLE REVERSE .....                  | 1    |      |
|      | 444 693      | .PLUG, PIPE - OIL LEVEL & DRAIN.....         | 2    |      |
| 16   | 28 796       | .CUP, BEARING .....                          | 2    |      |
| 17   | 28 797       | .CONE, BEARING .....                         | 2    |      |
| 18   | 60 230       | .WORM, CIRCLE REVERSE .....                  | 1    |      |
| 19   | 28 781A      | .SHIM - 0.003 .....                          | 2    |      |
|      | 28 781B H45  | .SHIM - 0.005 .....                          | 4    |      |
|      | 28 781C      | .SHIM - 0.020 .....                          | 5    |      |
| 20   | 28 765       | .CAP, END.....                               | 1    |      |
|      | 24 841 R1    | .BOLT .....                                  | 6    |      |
|      | 25 534 R1    | .WASHER, FLAT .....                          | 6    |      |