

PARTS & SERVICE NEWS

REF NO. AA99121

DATE August 11, 1999

(C)

Page 1 of 16

SUBJECT: AIR CONDITIONER AND HEATER BOX UPDATE

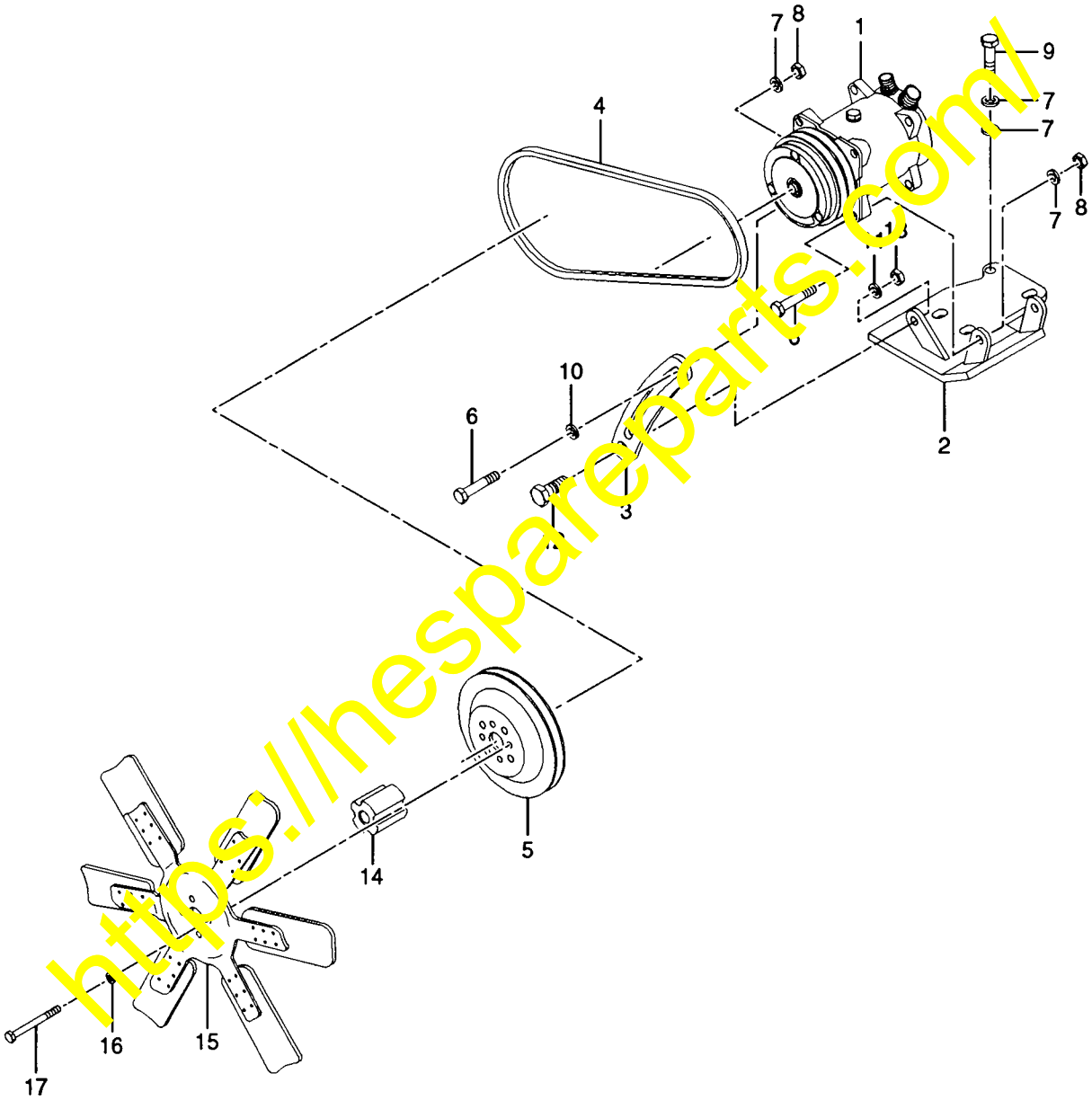
PURPOSE: Show Parts On New Air Conditioner Assemblies

APPLICATION: 830B Graders with Serial Number 202002 and Up
 830C Graders with Serial Number 202002 and Up
 850B Graders with Serial Number 202002 and Up
 850C Graders with Serial Number 202002 and Up
 870B Graders with Serial Number 202002 and Up
 870C Graders with Serial Number 202002 and Up
 GD530A-2BY Graders with Serial Number 202002 and Up
 GD530A-2CY Graders with Serial Number 202002 and Up
 GD530AW-2BY Graders with Serial Number 202002 and Up
 GD530AW-2CY Graders with Serial Number 202002 and Up
 GD650A-2BY Graders with Serial Number 202002 and Up
 GD650A-2CY Graders with Serial Number 202002 and Up
 GD650AW-2BY Graders with Serial Number 202002 and Up
 GD650AW-2CY Graders with Serial Number 202002 and Up
 GD670A-2BY Graders with Serial Number 202002 and Up
 GD670A-2CY Graders with Serial Number 202002 and Up
 GD670AW-2BY Graders with Serial Number 202002 and Up
 GD670AW-2CY Graders with Serial Number 202002 and Up

FAILURE CODE: 830099

DESCRIPTION: The following pages provide the updated parts information for the air conditioner and heater box, air conditioner lines, and compressor mounting for the graders listed. The final page provides the updated wiring diagram for this system.

**AIR CONDITIONER COMPRESSOR MOUNTING
FOR 850, 870, GD 650, AND GD 750 MOTOR GRADERS**

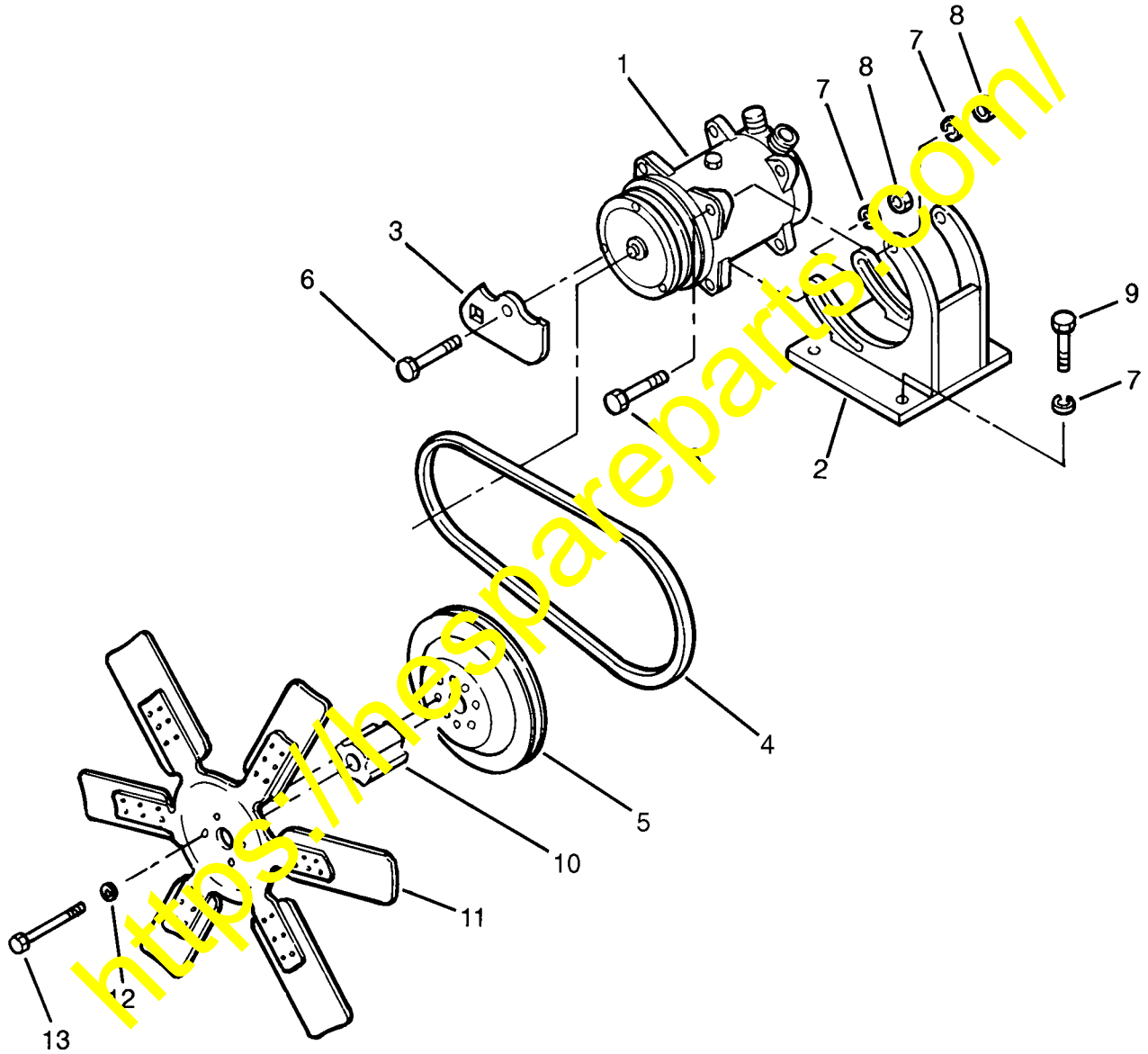


JN1003

**AIR CONDITIONER COMPRESSOR MOUNTING
FOR 850, 870, GD 650, AND GD 750 MOTOR GRADERS**

Item	Part Number	Description	Qty.	Ref.
1	1433 064 H91	COMPRESSOR, AIR CONDITIONER.....	1	
	1437 236 H91	. CLUTCH ASSEMBLY.....	1	
	1439 655 H91	KIT, COMPRESSOR MOUNTING BRACKET	1	
2	1439 676 H1	. BRACKET, COMPRESSOR MOUNTING.....	1	
3	1432 105 H1	. TIGHTNER	1	
4	1432 106 H1	. BELT.....	1	
5	1432 102 H1	. PULLEY	1	
	1439 697 H91	. PACKAGE, HARDWARE	1	
6	30 022 R1	. . BOLT	3	
7	933 965 R1	. . WASHER, LOCK	7	
8	30 168 R1	. . NUT, HEX	3	
9	931 312 R1	. . BOLT	4	
10	120 393	. . WASHER, FLAT	2	
11	120 214	. . WASHER, LOCK	1	
12	25 654 R1	. . BOLT	1	
13	120 376	. . NUT, HEX	1	
14	1237 551 H1	SPACER, FAN.....	1	
15	1237 821 H1	FAN, SUCTION	1	
16	30 184 R1	WASHER, FLAT	4	
17	30 256 R1	BOLT, LOCKING.....	4	

**AIR CONDITIONER COMPRESSOR MOUNTING
FOR 830 AND GD 530 MOTOR GRADERS**

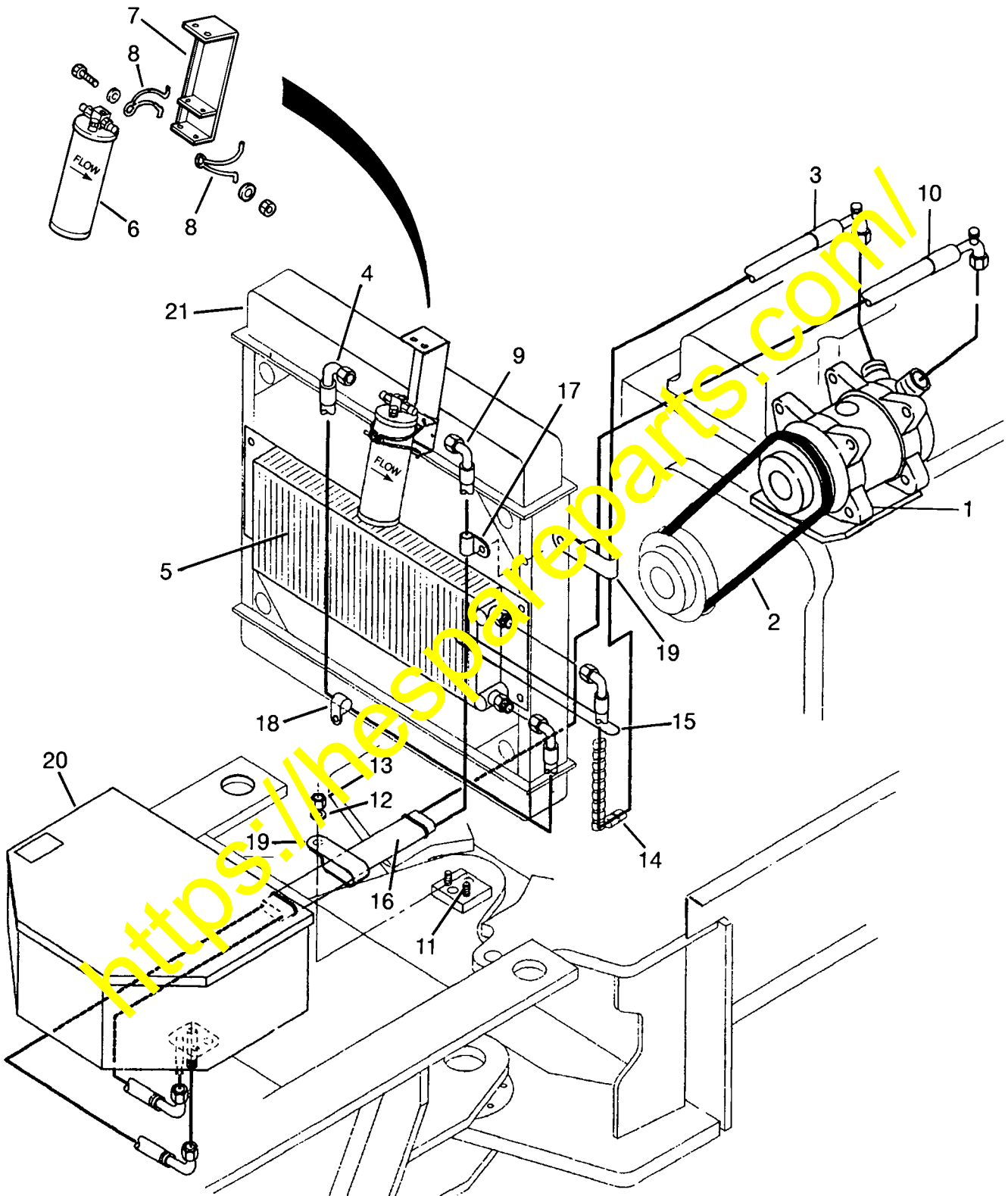


JN1004

**AIR CONDITIONER COMPRESSOR MOUNTING
FOR 830 AND GD 530 MOTOR GRADERS**

Item	Part Number	Description	Qty.	Ref.
1	1433 064 H91	COMPRESSOR, AIR CONDITIONER.....	1	
	1437 236 H91	. CLUTCH ASSEMBLY.....	1	
	1439 654 H91	KIT, COMPRESSOR MOUNTING BRACKET	1	
2	1439 677 H1	. BRACKET, COMPRESSOR MOUNTING.....	1	
3	1439 679 H1	. PLATE, ADJUSTING	1	
4	1432 101 H1	. BELT.....	1	
5	1432 102 H1	. PULLEY	1	
	1439 695 H91	. PACKAGE, HARDWARE	1	
6	30 022 R1	. . BOLT	4	
7	933 965 R1	. . WASHER, LOCK	7	
8	30 168 R1	. . NUT, HEX	3	
9	931 312 R1	. . BOLT	3	
10	1237 551 H1	SPACER, FAN.....	1	
11	1237 821 H1	FAN, SUCTION	1	
12	30 184 R1	WASHER, FLAT	4	
13	30 256 R1	BOLT, LOCKING.....	4	

AIR CONDITIONER LINES



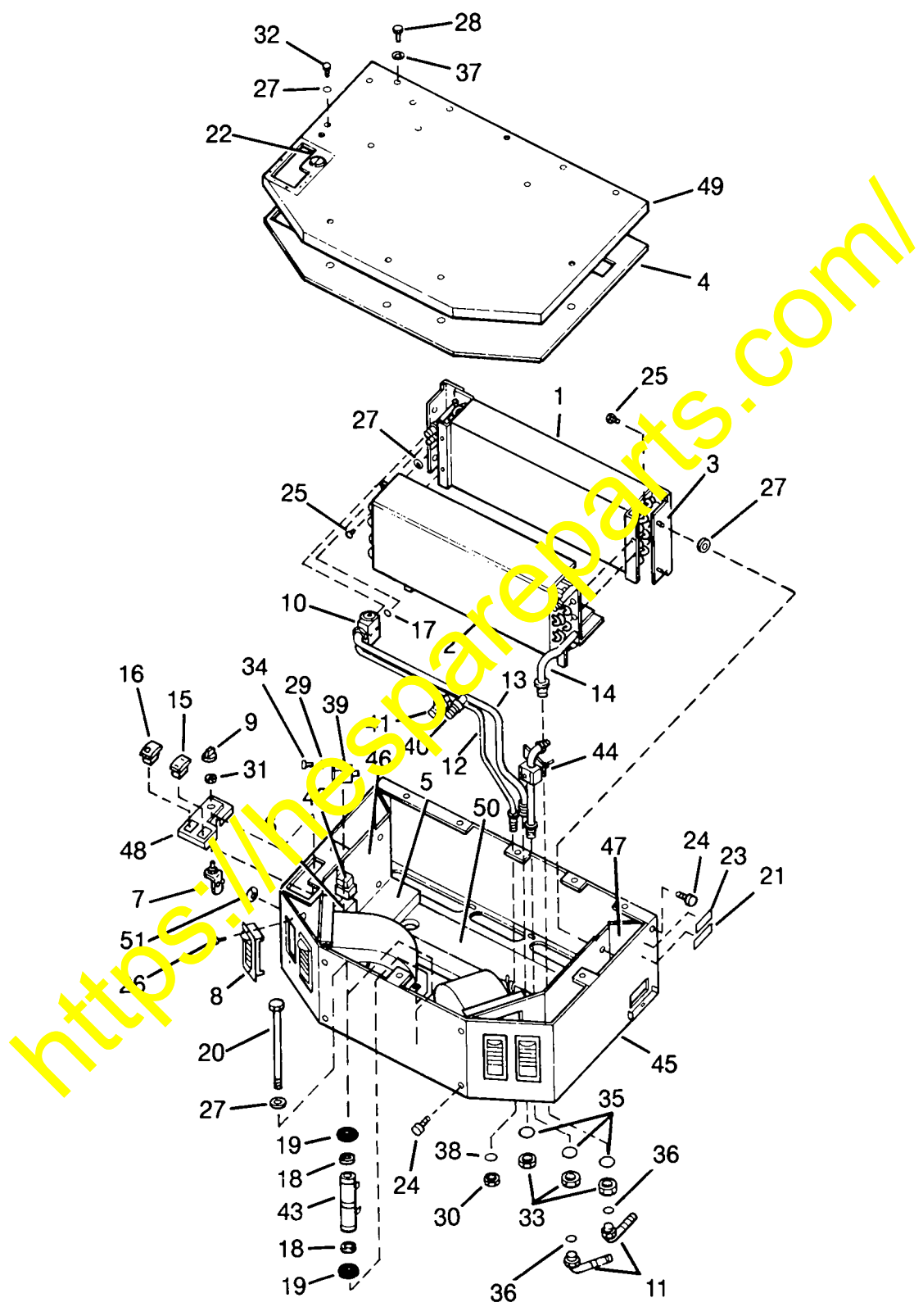
JN20219

AIR CONDITIONER LINES

Item	Part Number	Description	Qty.	Ref.
1		COMPRESSOR MOUNTING (SEE PAGE 3 OR 5)		
2		BELT, COMPRESSOR DRIVE (SEE PAGE 3 OR 5)		
	1439 656 H91	KIT, CONDENSER	1	
3	1433 065 H1	. HOSE ASSEMBLY	1	
4	1439 701 H1	. HOSE ASSEMBLY	1	
5	1431 742 H1	. COIL, CONDENSER	1	
	1439 742 H91	. RECEIVER / DRYER ASSEMBLY.....	1	
6	1439 698 H1	. . RECEIVER / DRYER	1	
7	1439 704 H91	. . BRACKET, DRYER MOUNTING.....	1	
8	1439 705 H1	. . CLAMP, MOTOR-WIRE	2	
	30 209 R1	. . WASHER, 6.4 MM FLAT	2	
	30 365 R1	. . SCREW - M6 X 440 MM.....	1	
	31 107 R1	. . LOCKNUT, M6.....	1	
	1439 653 H91	KIT, HOSE.....	1	
9	1439 702 H1	. HOSE - 5/16 X 7.5 FT.....	1	
10	1433 066 H1	. HOSE - 1/2 X 8 FT.....	1	
11	105 899	STUD, WELD	1	
12	25 553 R1	WASHER, FLAT	1	
13	17 044 R1	NUT, HEX	1	
14	161 496	SLEEVE, PROTECTIVE - 22 IN.....	1	
15	935 522 C1	STRAP, TIE	4	
16	1431 377 H1	*HOSE WRAP - CUT TO LENGTH.....	1	
17	93 958	CLAMP.....	1	
	27 326 R1	WASHER, 5/16 IN HARDENED.....	1	
	25 537 R1	BOLT, HEX 5/16 - 18	1	
18	93 958	CLAMP.....	1	
	28 422 R1	WASHER, 3/8 IN HARDENED.....	2	
	17 044 R1	LOCKING NUT, 3/8 - 16	1	
	20 537 R1	BOLT, 3/8 - 16 X 1 IN	1	
19	27 843 R1	CLAMP.....	1	F1
20		BOX ASSEMBLY, HEATER A/C (SEE PAGE 9 OR 12)		
21		RADIATOR (SEE PARTS BOOK)		

F1 - USE EXISTING HARDWARE

AIR CONDITIONER / HEATER BOX ASSEMBLY



JN1001

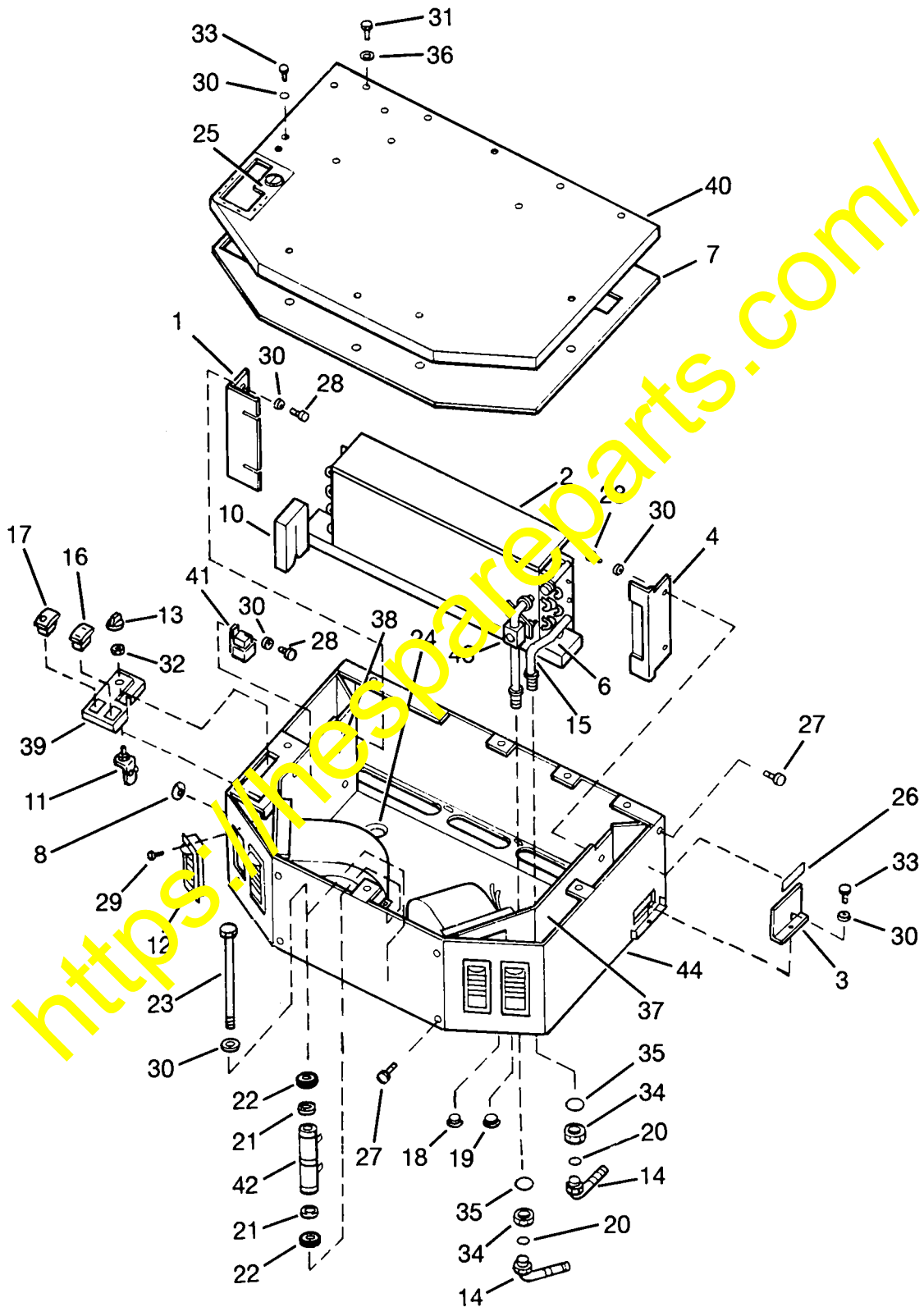
AIR CONDITIONER / HEATER BOX ASSEMBLY

Item	Part Number	Description	Qty.	Ref.
	1439 651 H91	HEATER / AIR CONDITIONER BOX ASSEMBLY	1	
1	1439 617 H1	. COIL, EVAPORATOR	1	
	1439 634 H1	. CLAMP, HOSE.....	2	
2	1437 224 H91	. CORE ASSEMBLY, HEATER	1	
	1308 742 H1	. . VALVE.....	1	
	1431 225 H1	. . FITTING, HOSE BULKHEAD	1	
	1434 665 H1	. . CLAMP.....	4	
	1434 982 H1	. . COIL, HEATER.....	1	
	1437 225 H1	. . VALVE, HEAT.....	1	
	1437 226 H1	. . HOSE, FORMED	1	
	1437 227 H1	. . ASSEMBLY, HEATER HOSE	1	
3	1439 619 H1	. ANGLE, COIL RETAINER	2	
	1439 620 H1	. GASKET, CASE BOTTOM	1	
	1439 621 H1	. GASKET, CORE	1	
4	1439 622 H1	. GASKET, TOP COIL	1	
5	1439 623 H1	. GASKET, HEATER BLOCK-OFF	1	
6	1439 624 H1	. GASKET, CABLE BLOCK-OFF.....	1	
	1439 625 H1	. GASKET, DRAIN PAN.....	1	
7	1439 626 H91	. CABLE, WATER VALVE	1	
8	1439 627 H1	. LOUVER	4	
9	1439 628 H1	. KNOB, HEATER - A/C CONTROL.....	1	
10	1439 629 H1	. VALVE, EXPANSION	1	
11	1431 254 H1	. FITTING.....	2	
12	1439 630 H91	. TUBE, A/C CONNECTOR	1	
13	1439 631 H91	. TUBE, A/C CONNECTOR	1	
14	354 359 C1	. HOSE	1	F1
15	1434 954 H1	. SWITCH, ROCKER MASTER.....	1	
16	1434 955 H1	. SWITCH, ROCKER MASTER.....	1	
17	375 271 R1	. O-RING, #8	2	
	359 158 R1	. O-RING, #6 GREEN	1	
18	1439 633 H1	. WASHER, CENTERING	2	
19	LA 0716	. WASHER, RUBBER RESISTOR MOUNTING	2	
20	LA 0718	. SCREW.....	1	
21	1439 700 H1	. DECAL, CAUTION	1	

Item	Part Number	Description	Qty.	Ref.
22	1434 956 H1	. DECAL, TEMPERATURE	1	
23	LA 0722	. DECAL, NAMEPLATE	1	
24	1439 635 H1	. SCREW.....	8	
25	1439 636 H1	. SCREW.....	9	
	1439 637 H1	. DRAIN TUBE	2	
26	23 978 R1	. SCREW, FLAT HEAD	8	
27	30 325 R1	. WASHER, M6	16	
28	24 839 R1	. SCREW.....	8	
	LA 0727	. NUT	4	
29	27 227	. WASHER	2	
30	LA 0727	. NUT	1	
31	1439 639 H1	. NUT	1	
32	21 024 R1	. SCREW.....	6	
33	LA 0729	. NUT	3	
34	1439 680 H1	. LOCKNUT	2	
35	1437 230 H1	. LOCK WASHER	3	
36	371 544 R1	. O-RING, #10	3	
37	LA 0733	. WASHER.....	8	
38	LA 0735	. WASHER.....	1	
39	1439 681 H91	. SWITCH, FREEZE CONTROL.....	1	
40	1439 682 H1	. SWITCH, LOW PRESSURE	1	
41	1439 683 H1	. SWITCH, HIGH PRESSURE	1	
42	1439 684 H1	. RELAY.....	1	
43	LA 0738	. RESISTOR.....	1	
	1439 685 H91	. WIRE HARNESS	1	
44	1439 686 H91	. VALVE, WATER	1	
45	1439 687 H91	. CASE WELDMENT	1	
46	1439 688 H91	. RIGHT SIDE WELDMENT	1	
47	1439 689 H91	. LEFT SIDE WELDMENT.....	1	
48	1439 690 H91	. SWITCH PLATE WELDMENT	1	
49	1439 692 H91	. BOX COVER	1	
50	1439 693 H91	. DRIP TRAY WELDMENT.....	1	
51	520 041	. GROMMET, .375 I.D.	1	

F1 - .5 FT, CUT FROM BULK HOSE

HEATER BOX ASSEMBLY



JN1000

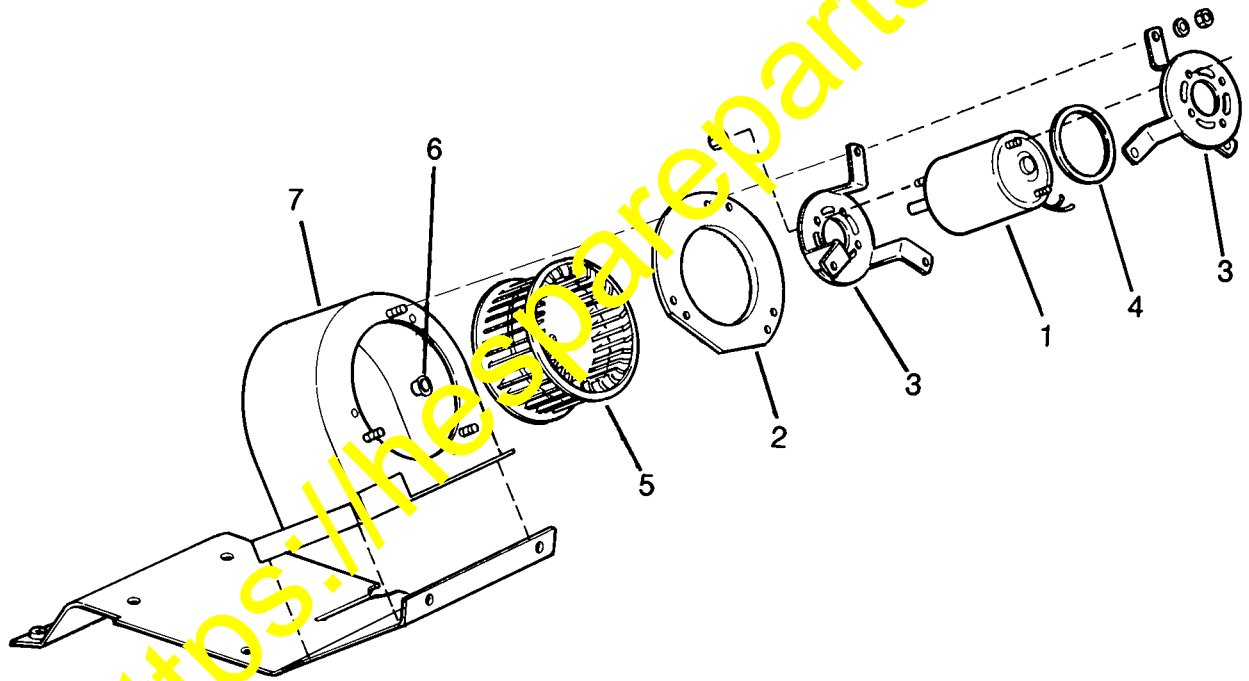
HEATER BOX ASSEMBLY

Item	Part Number	Description	Qty.	Ref.
	1439 652 H91	HEATER BOX ASSEMBLY	1	
1	1439 694 H1	. ANGLE, COIL RETAINER	1	
2	1437 224 H91	. CORE ASSEMBLY, HEATER	1	
	1308 742 H1	. . VALVE.....	1	
	1431 225 H1	. . FITTING, HOSE BULKHEAD	1	
	1434 665 H1	. . CLAMP.....	4	
	1434 982 H1	. . COIL, HEATER.....	1	
	1437 225 H1	. . VALVE, HEAT.....	1	
	1437 226 H1	. . HOSE, FORMED	1	
	1437 227 H1	. . ASSEMBLY, HEATER HOSE	1	
3	1439 618 H1	. PLATE, OUTLET	2	
4	1439 619 H1	. ANGLE, COIL RETAINER	1	
	1439 741 H1	. SEAL, OUTLET PLATE	1	F1
	1439 620 H1	. GASKET, CASE BOTTOM	1	
6	1439 621 H1	. GASKET, CORE	1	
7	1439 622 H1	. GASKET, TOP COIL	1	
8	1439 638 H1	. GROMMET	1	
	1439 624 H1	. GASKET, CABLE BLOCK-OFF.....	1	
10	1439 703 H1	. GASKET HEATER SUPPORT	1	
	1439 626 H91	. CABLE, WATER VALVE	1	
12	1439 627 H1	. LOUVER	4	
13	1439 628 H1	. KNOB, HEATER - A/C CONTROL.....	1	
14	1431 254 H1	. FITTING.....	2	
15	364 359 C	. HOSE.....	1	F1
16	1434 754 H1	. SWITCH, ROCKER MASTER.....	1	
17	1434 755 H1	. SWITCH, ROCKER MASTER.....	1	
18	432 610	. PLUG, BUTTON (3/4 IN. HOLE)	1	
19	192 105	. PLUG, BUTTON (1 IN. HOLE)	1	
20	371 544 R1	. O-RING, #10	2	
21	1439 633 H1	. WASHER, CENTERING	2	
22	LA 0716	. WASHER, RUBBER RESISTOR MOUNTING	2	
	1439 634 H1	. CLAMP, HOSE.....	2	
23	LA 0718	. SCREW.....	1	
24	432 449	. PLUG, BUTTON (1.5 IN. HOLE)	1	

Item	Part Number	Description	Qty.	Ref.
25	1434 956 H1	. DECAL, TEMPERATURE	1	
26	LA 0722	. DECAL, NAMEPLATE	1	
27	1439 635 H1	. SCREW.....	8	
28	1439 636 H1	. SCREW.....	9	
29	23 978 R1	. SCREW, FLAT HEAD	8	
30	30 325 R1	. WASHER, M6	12	
31	24 839 R1	. SCREW.....	3	
	LA 0725	. LOCKNUT	4	
32	1439 639 H1	. NUT	1	
33	21 024 R1	. SCREW.....	6	
34	LA 0729	. NUT	2	
35	1437 230 H1	. LOCK WASHER	2	
36	LA 0733	. WASHER	8	
37	1439 689 H91	. LEFT SIDE WELDMENT.....	1	
38	1439 688 H91	. RIGHT SIDE WELDMENT	1	
39	1439 690 H91	. SWITCH PLATE WELDMENT	1	
40	1439 692 H91	. BOX COVER	1	
41	1439 684 H1	. RELAY	1	
42	LA 0738	. RESISTOR.....	1	
	1439 696 H91	. WIRE HARNESS	1	
43	1439 686 H91	. VALVE, WATER	1	
44	1439 687 H91	. CASE WELDMENT	1	

F1 - 3.18 X 9.52, 4 FT., CUT FROM BULK

BLOWER ASSEMBLY



JN1002

BLOWER ASSEMBLY

Item	Part Number	Description	Qty.	Ref.
1	1439 699 H1	MOTOR, BLOWER	2	F1
2	LA 0692	ORAFICE RING.....	2	F1
3	LA 0693	BRACKET, MOTOR MOUNTING.....	4	F1
4	1270 184 H1	GASKET, MOTOR MOUNTING.....	2	F1
5	938 514 C1	BLOWER WHEEL.....	2	F1
6	1439 632 H1	. CLIP, BLOWER WHEEL	1	F1
7	1439 691 H91	BLOWER WELDMENT.....	2	F1
	30 325 R1	WASHER.....	6	F1
	1439 638 H1	LOCKNUT	6	F1

F1 - THE REQUIRED NUMBER OF EACH PART IS INCLUDED IN THE HEATER / AIR CONDITIONER BOX ASSEMBLY, PART NUMBER 1439 651 H91, AND THE HEATER BOX ASSEMBLY, PART NUMBER 1439 652 H91

AIR CONDITIONER / HEATER BOX ASSEMBLY WIRING DIAGRAM

