

PARTS & SERVICE NEWS

REF NO. AA99162

DATE August 15, 2000

(C)

Page 1 of 15

SUBJECT: WORKLAMP RELOCATION

PURPOSE: Relocate worklamps to outside of cab to prevent windshield cracking

APPLICATION: WA120-3L Wheel Loader Serial Number A30001 through A30222
 WA180-3L Wheel Loader Serial Number A80001 through A80628
 WA180-3PTC Wheel Loader Serial Number A85001 through A85505
 WA250-3L Wheel Loader Serial Number A70001 through A70571
 WA250-3PTC Wheel Loader Serial Number A75001 through A75320
 WA320-3L Wheel Loader Serial Number A30001 through A30493
 WA320-3MC Wheel Loader Serial Number A31001 through A31366
 WA380-3L Wheel Loader Serial Number A50001 through A50493
 WA380-3MC Wheel Loader Serial Number A50001 through A51263
 WA420-3L Wheel Loader Serial Number A30001 through A30174
 WA420-3MC Wheel Loader Serial Number A31001 through A31064
 WA450-3L Wheel Loader Serial Number A30001 through A30361
 WA450-3MC Wheel Loader Serial Number A31001 through A31111

FAILURE CODE: 553337

DESCRIPTION: Some of the above listed units have had windshield failures. It has been determined that heat generated by the worklamps is one of the causes. This PARTS AND SERVICE NEWS addresses the problem by relocating the worklamps outside of the cab.

Introduction:

The worklamps will be removed from the inside of the cab and mounted on the mirror stays on the left and right-hand sides of the cab using the following parts and procedure.

For removal and re-installation of the cracked windshields, refer to Appendix A at the end of this PARTS AND SERVICE NEWS.

PARTS LISTS

Parts to be removed

Item	Part Number	Description	Qty	Remarks
1	421-06-23360	Lamp Assembly, Work	2	Reuse of this part required
2	01435-01220	Bolt	2	Reuse of this part required
3	421-56-21680	Fastener	4	
4	421-56-21330	Cover, L.H.	1	
5	421-56-21340	Cover, R.H.	1	
6	421-56-21350	Seal	2	

Item	Part Number	Description	Qty	Remarks
7	01023-70512	Screw	8	Reuse of this part required
8	01642-40608	Washer	8	Reuse of this part required
27	01580-10403	Screw	2	Reuse of this part required
28	01641-20405	Nut	2	Reuse of this part required

Parts to be ordered

Item	Part Number	Description	Qty	Remarks
10	423-975-1140	Grommet	2	
11	425-56-21130	Wiring Harness	2	
12	425-56-21140	Plate, L.H.	1	See Note 1
13	425-56-21150	Plate, R.H.	1	See Note 1
14	425-56-21110	Bracket, L.H.	1	
15	425-56-21120	Bracket, R.H.	1	
16	07283-32746	U-bolt	2	
17	07283-52737	Seat	2	
18	01643-31032	Washer	4	
19	01597-01009	Nut	8	
20	08053-01510	Clip	2	
21	01435-01020	Bolt	2	
22	421-54-15520	Clip	2	
23	424-926-A350	Plate	2	See Note 1
24	417-967-A260	Bracket	1	See Note 2
25	417-967-A270	Bracket	1	See Note 2
26	418-93-A2530	Decal	1	See Note 3

- Note 1: Item 23 must be used instead of Item 12 and 13 for the following machines only:
WA320-3L, WA380-3MC, WA420-3L, WA420-3MC, WA450-3L, WA450-3MC
- Note 2: Items 24 and 25 are necessary for cabs equipped with Audiovox radio kits. Item 24 is used with cabs which have rounded glass windshields. Item 25 is used with cabs which have flat glass windshields.
- Note 3: Item 26 is a Komatsu decal which replaces the existing decal on the following Avance Plus machines:
WA320-3MC, WA380-3MC, WA420-3MC, WA450-3MC

Rework Instructions:

The following instructions show the procedure for reworking the left-hand side of the cab. The same procedure should be followed for the right-hand side.

1. Remove screws (7), washers (8), covers (4,5) and seals (6) from worklamps.
2. Disconnect the wiring harness.
3. Remove bolt (2), fastener (3), and lamp assembly (1) from cab.

NOTE: DO NOT discard the star-marked items as these will be reinstalled later. Circle-marked items (left-hand side only) must be reinstalled for the Audiovox radio kit.

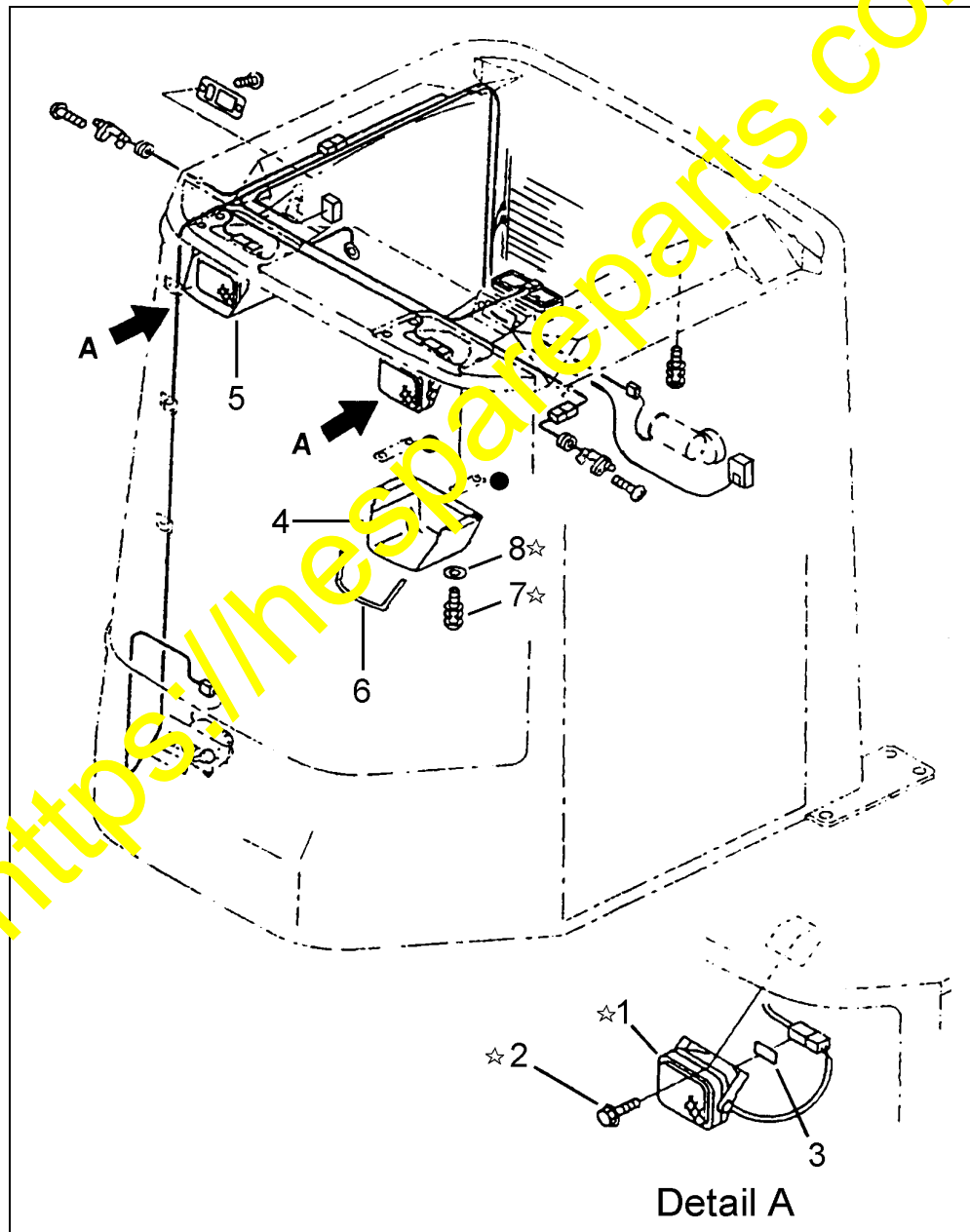


Figure 1

NOTE: This step applies only to machines equipped with an Audiovox radio kit.

4. Mount the proper bracket (24 or 25) depending on windshield type with the existing screws (27) and nuts (28). (See Figure 2).

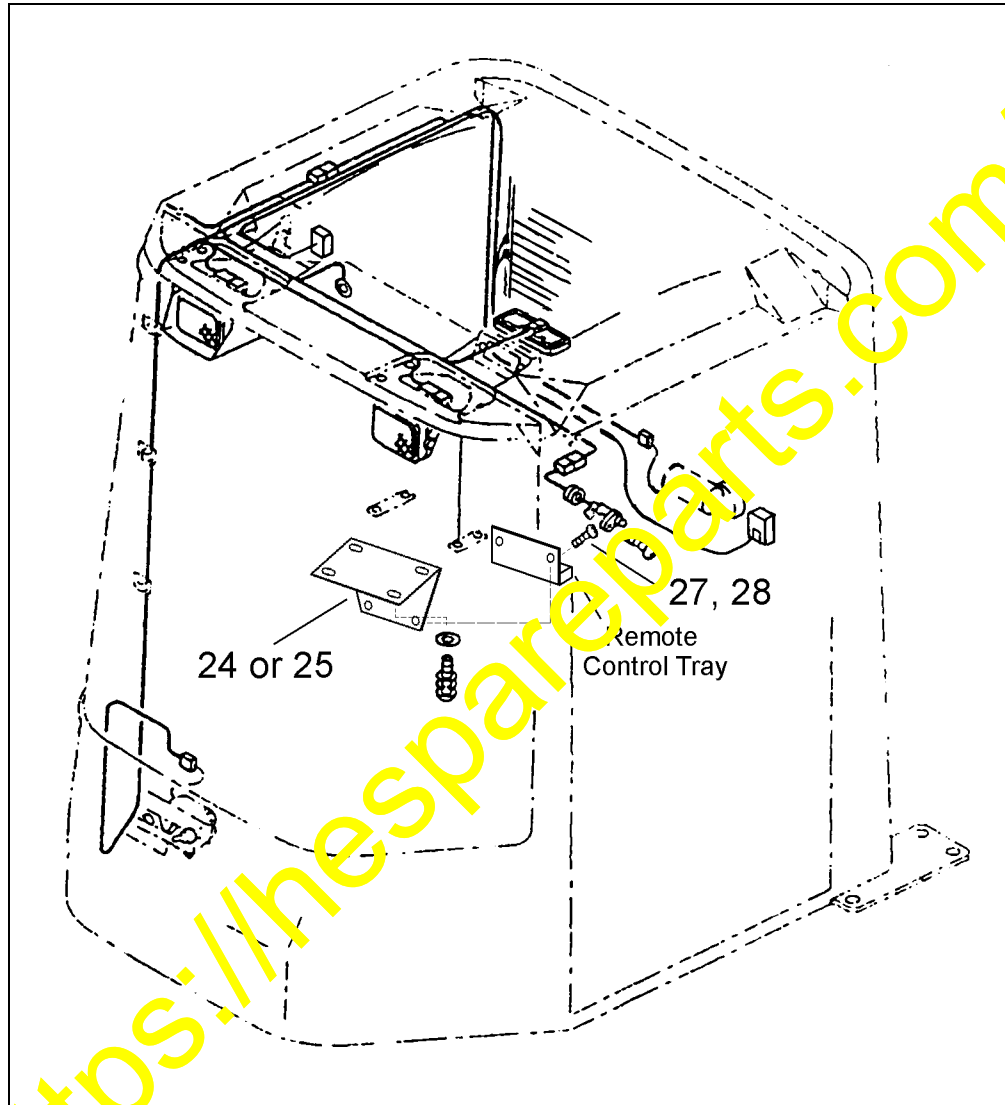


Figure 2

5. Rework the cab roof as shown in Figure 3. One hole, 15mm in diameter, must be drilled on the left and right-hand side of the cab roof.

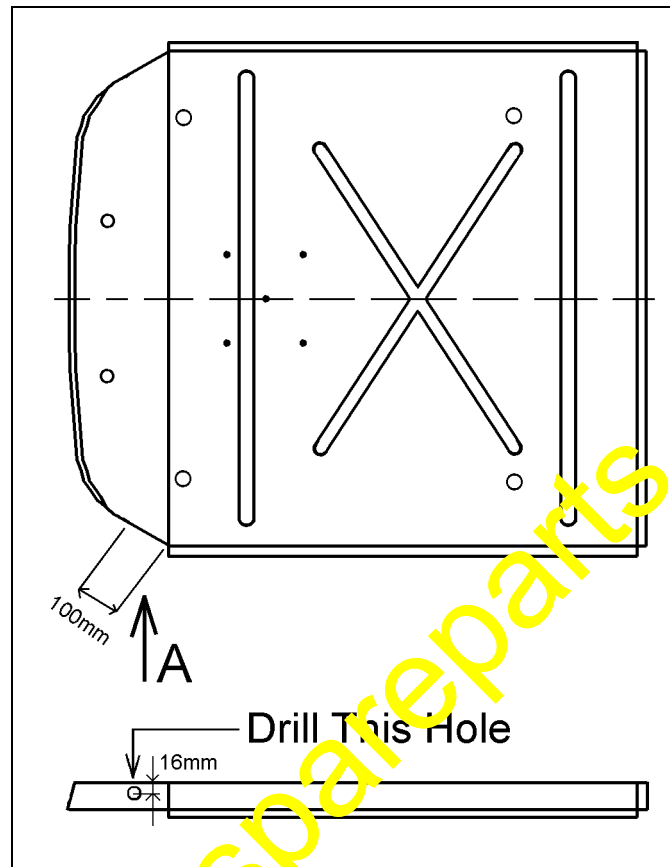


Figure 3

6. Using u-bolt (16) and seat (17), attach brackets (14,15) to the upper arm of the mirror stay with washer (18) and nuts (19).
7. Using bolt (2), install worklamp (1) on bracket and tighten to KES standards.
8. Using bolt (21), install clip (20) on bracket.
9. Connect wiring harness and attach to clip (20).
10. Using clip (22), secure wire harness to cab.
11. As shown in the plan view in Figure 4, adjust the worklamp away from the windshield to prevent interior glare.

NOTE: Figure 4 shows the left-hand side of the cab. Follow the same procedure for the right-hand side.

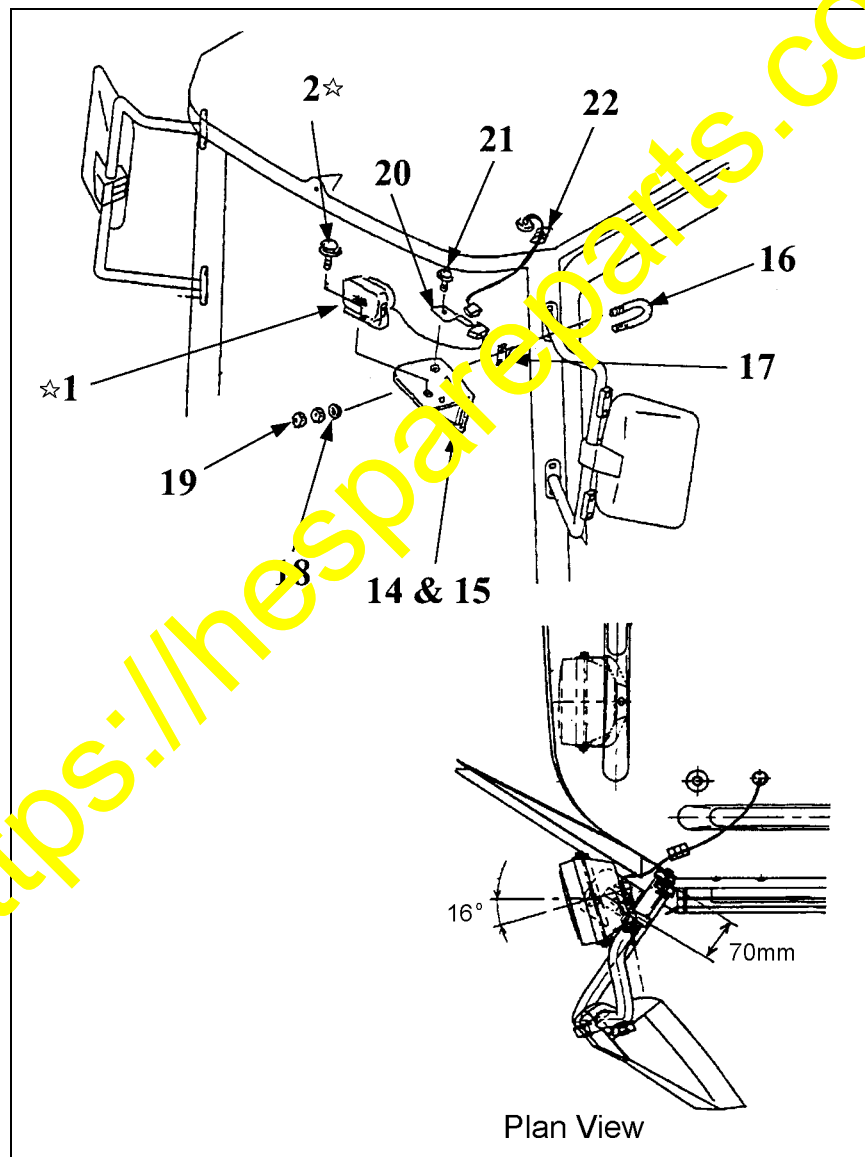


Figure 4

12. Thread the wiring harness through the hole in the cab and connect to existing harness.
13. As shown in Detail B, place grommet (10) over harness and into the hole in the cab. Apply Threebond 5211E or equivalent sealant between grommet and cab and between harness and grommet.
14. Using screws (7) and washers (8), install new plates (12 and 13, or 23).
15. Install the connector (Detail C) on the wiring harness (11).

- NOTES:**
- a. Star-marked parts are those which are being reused.
 - b. The square-marked part is a connector which is shipped loose with the harness (11) and must be installed after the harness has been installed on the cab.

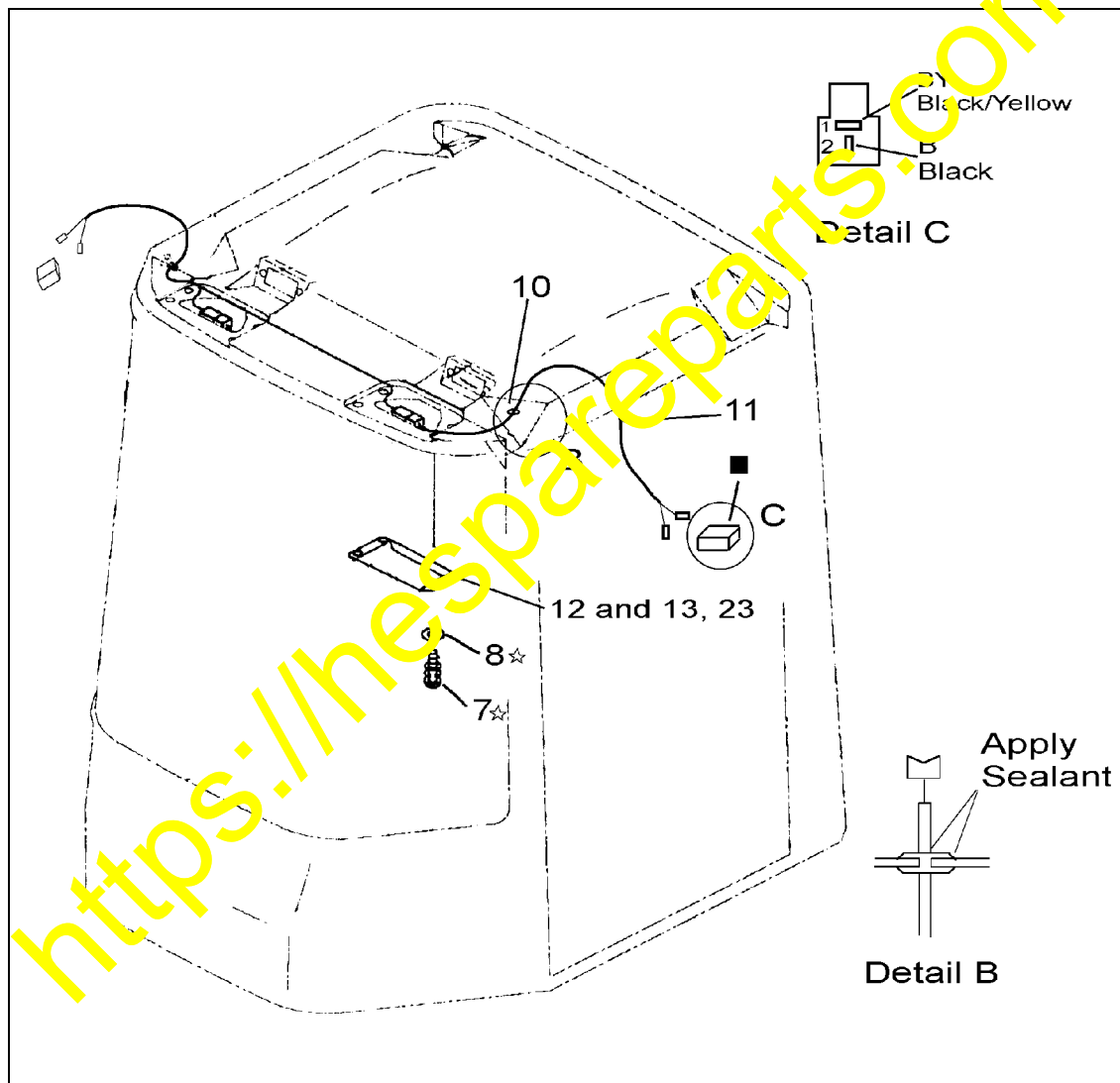


Figure 5

16. For "Avance Plus" models, replace the existing decal with the new decal (26). Figure 6 shows the proper location for the new decal.

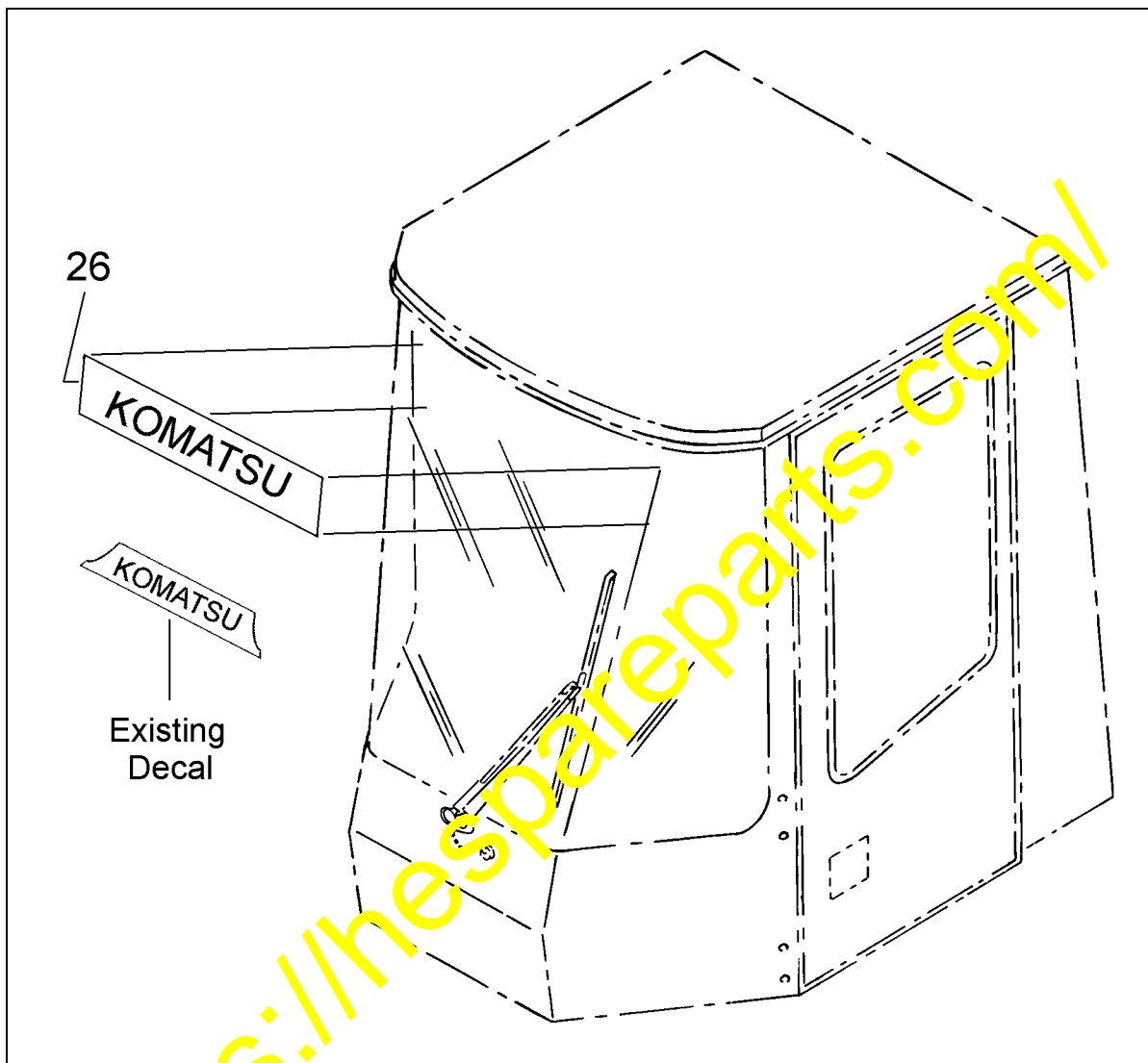


Figure 6

APPENDIX A

Introduction:

These instructions are included with the PARTS AND SERVICE NEWS to ensure proper removal and installation of the wheel loader windshields. This appendix applies to all the machines listed on the first page of this PARTS AND SERVICE NEWS.

PARTS LIST

Item	Part Number	Description	Qty	Remarks
1	-	1521B Threebond Sealant	1	
2	423-56-21110	Round Glass Windshield	1	
3	424-92-62670	Flat Glass Windshield	1	

Round Glass Windshield Replacement Procedure:

1. Using a very sharp knife, cut the existing adhesive all around the front windshield.



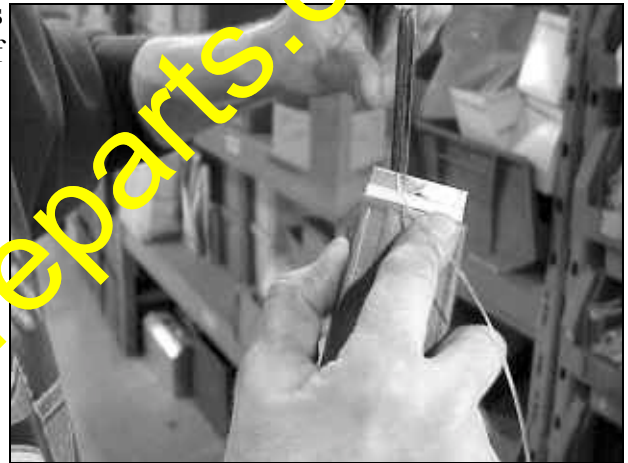
2. Remove the lock rubber from windshield trim.



3. Open top and bottom rubber trims.



4. Remove the broken windshield and clean the glass debris from the rubber trim. Clean all the edges of the new windshield with a sharp knife.



5. Carefully insert the windshield in the rubber.
6. Seal all around the outside of the windshield using Threebond adhesive.



7. Reinsert the lock rubber of the lateral joints and close the top and bottom rubber trims.
8. Seal the vertical rubber with the top and bottom trim at the joints using Threebond adhesive.
9. Clean the windshield and return machine to service.



Flat Glass Windshield Replacement Procedure:

1. Remove both brackets at the bottom of the center glass pane. Using a very sharp knife, cut the existing adhesive and silicone all around the front windshield.



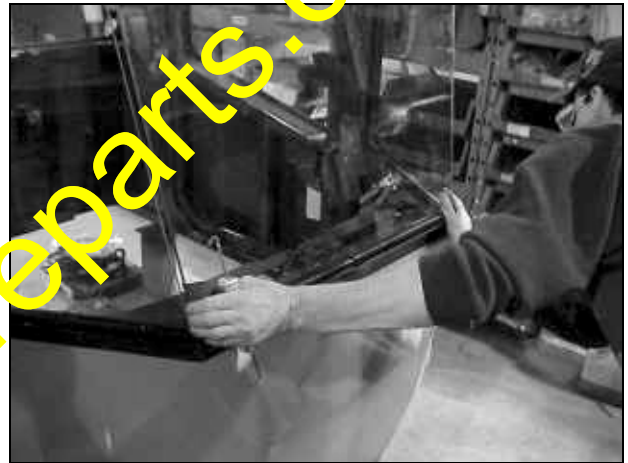
2. Open the top and bottom rubber trims.



3. Remove the broken windshield and clean the glass debris from the rubber trim and the silicone from both sides of the glass. Clean all the edges of the new windshield.



4. Slide the new windshield into the bottom rubber trim. Center the windshield in the middle of the opening.



5. Apply Threebond 1521B on the outside of the top and bottom rubber trim.



6. Close up the top and bottom trim.



7. Wash the glass for better masking tape adherence.

8. Put masking tape approximately 0.25 in. from the edges on the outside of the windshield. Run masking tape down the remaining gap on the inside of the cab.

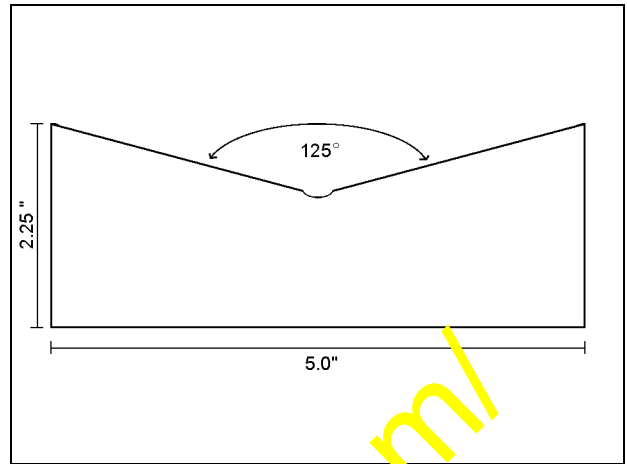
IMPORTANT: Do not use 3M brand tape inside the cab.



9. Mask the top and bottom sections of the rubber at the gap joint.



10. Using cardboard, make this tool.

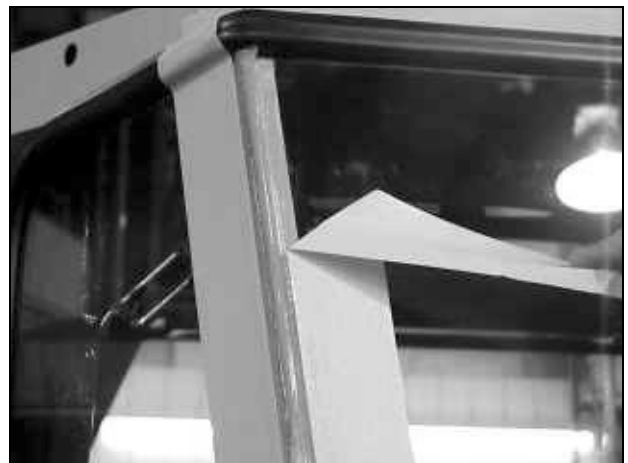


11. Fill the joint with silicone. Then wipe away the surplus silicone using the tool made in the previous step. Wipe away in one strike only.

NOTE: You must initially overfill the joint to provide for good sealing.



12. Remove the outside masking tape by pulling away from the bead.



13. Using a finger, seal the top and bottom silicone joints at both places.
14. Wait 8 hours before removing the masking tape from inside the cab.
15. Return machine to service.



<https://hespareparts.com/>