

PARTS & SERVICE NEWS

Ref. No.	AH00012
Date.	31.05.2000

Page 1 of 2

Subject: Distribution gear – seal ring on the output flange

Purpose: Exchange of the seal ring on the output flange at next visit of the machine.

Application: Standard distribution gear (20 km/h).

WA65-3 Serial-no. HA940051 up to HA940375
 Already changed: HA940367 368 372 373 374 375

WA65PT-3 Serial-no. HA050052 up to HA050064
 Already changed: HA050053 055 061 062

WA75-3 Serial-no. HA950051 up to HA950638
 Already changed: HA950493 503 504 513 514 519 522
 526 528 529 592 615 616 617 618
 619 620 621 622 623 624 625 626
 630 631 632 633 634 635 636 637

WA85-3 Serial-no. HA960051 up to HA960140
 Already changed: HA960 137 138 139

Failure Code: 2B2010

Description:

Introduction.

On the above mentioned machines it can happen that on the distribution gear from the rear axle the seal ring of the output flange get leak. Therefore at next visit of the machine the seal ring on the output flange of the distribution gear from the rear axle has to be changed with a new, improved seal ring.

The current seal ring is black. The new, improved seal ring is blue.

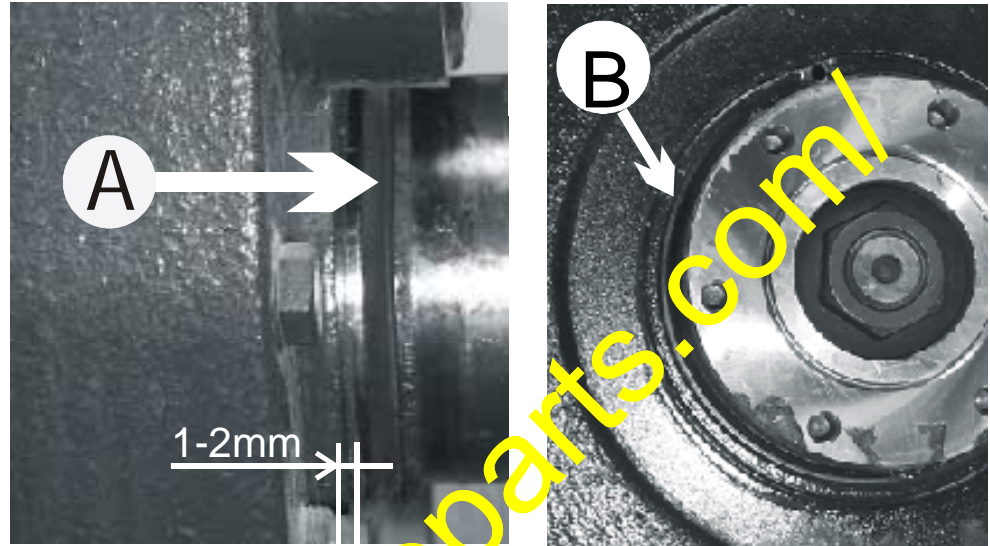
On page 2 you find the instructions for exchange of the seal ring.

Spare parts:

Name	P/N current	P/N new	Qty.
Seal ring	42U-23-H0P19	42T-23-H0P16	1

Execution:

- Remove the universal joint from the output flange of the distribution gear.
- Let drain perhaps a half litre oil from the distribution gear.
- Remove the dust seal (A) from the output flange.
- Remove the seal ring (B) from the output flange.



- Clean the seal area and the dust seal.
- Smooth the inner side of the seal ring with grease and the outside of the seal ring with LOCTITE 566 (brown).
- Mount the new seal ring on the output flange using a suitable tool.
- Set the dust seal onto the output flange.
- Be sure that the dust seal not contacts the distribution gear housing. Distance: 1–2 mm.
- Mount the universal joint on the output flange and tighten the screws crosswise.
- Tightening torque = 35 Nm.
- Fill in oil in the distribution gear up to the check hole.
- Check the distribution gear for tightness.