

PARTS & SERVICE NEWS	REF NO.	AH01507
	DATE	03013001

SUBJECT: Exchange of a bottom roller

PURPOSE: Introduction a new bottom roller

APPLICATION: PC5500; H 455S

FAILURE CODE: 3040ZA

DESCRIPTION:

New bottom rollers for the above mentioned excavator types are released.

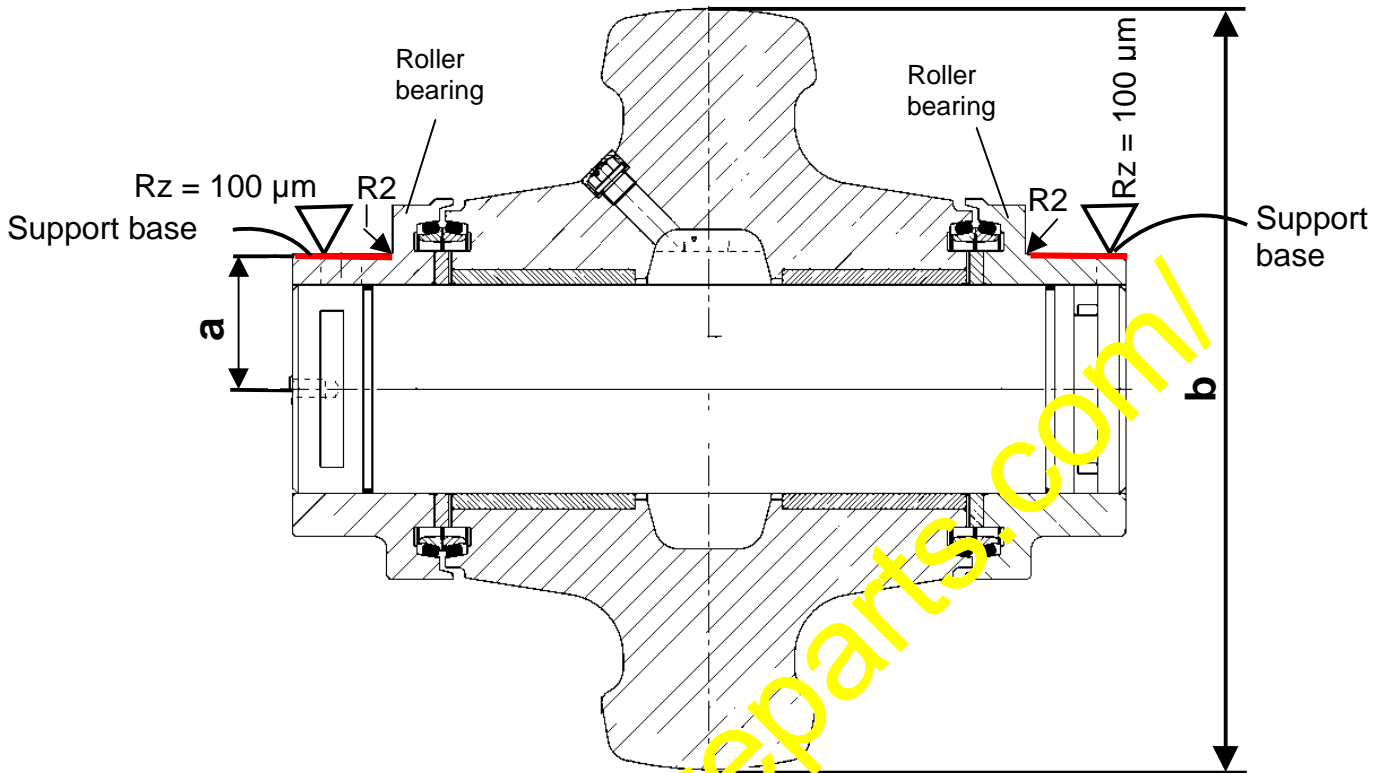
The main difference to the old ones: Outer diameter old: 600 mm
Outer diameter new: 620 mm.

The bottom roller **assy.** "Old version" (part number 643 410 40) is replaceable* with the bottom roller **assy.** "New version" (part number 913 524 40).

If you want to replace only the bottom roller body by the new version, you have to machine the support base of the roller bearings

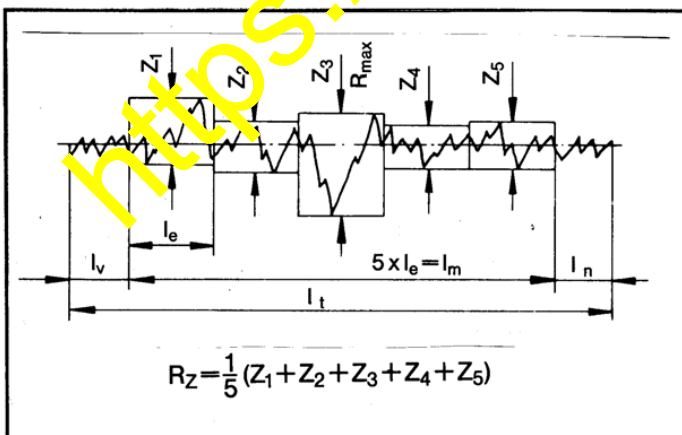
from the old value "a" = 120 mm
to the new value "a" = 110^{-0,2} mm (see illustration next page).

Part number	„a“ (mm)	„b“ (mm)
Old bottom roller assy.: 643 410 40	120	600
New bottom roller assy.: 913 524 40	110 ^{-0,2}	620

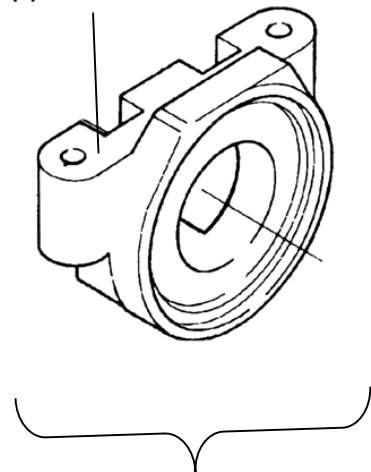


Oberflächenrauigkeit / Surface roughness				
DIN 3141	~	▽	▽▽	▽▽▽
DBM standard Werknorm 241 932 40 *	R _Z 120	R _Z 100	R _Z 25	R _Z 6,3
DIN - ISO 1302	√	√	√	√

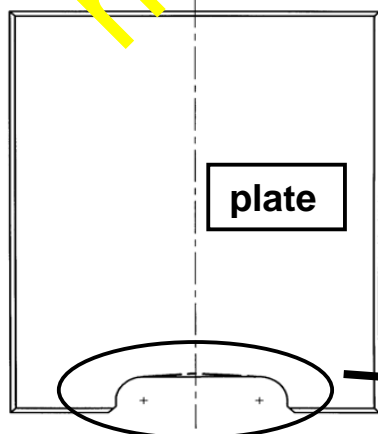
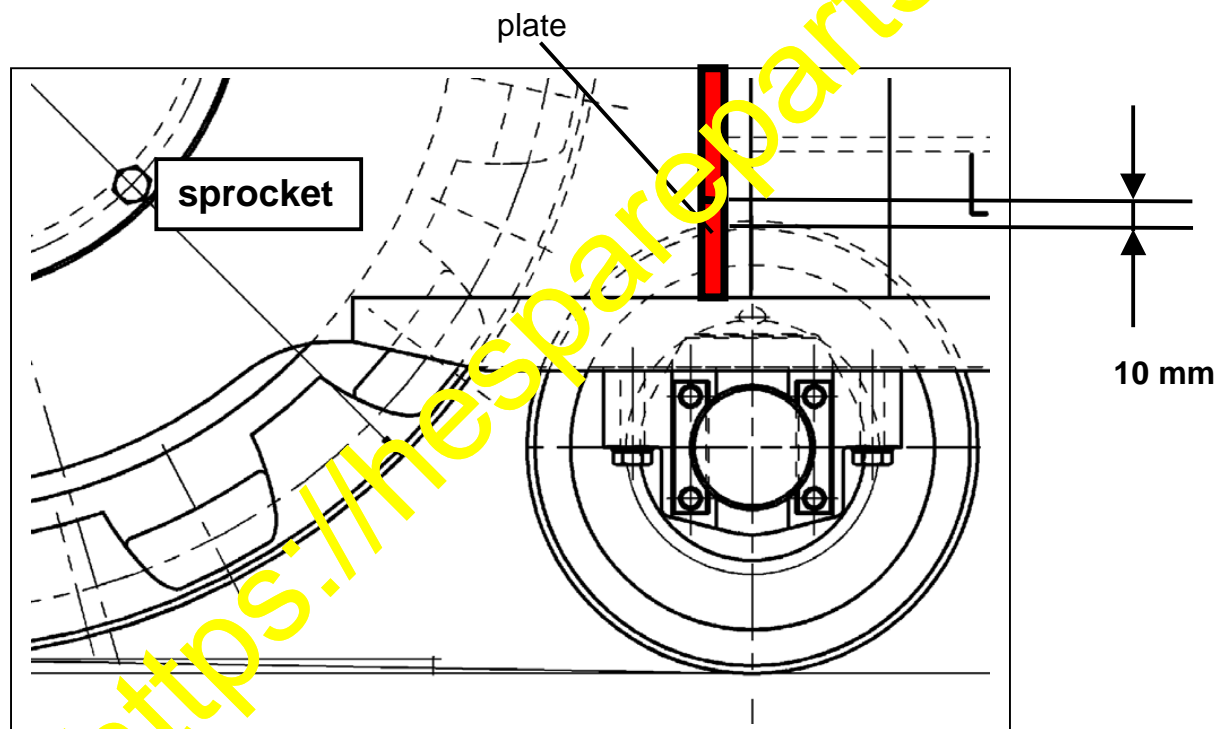
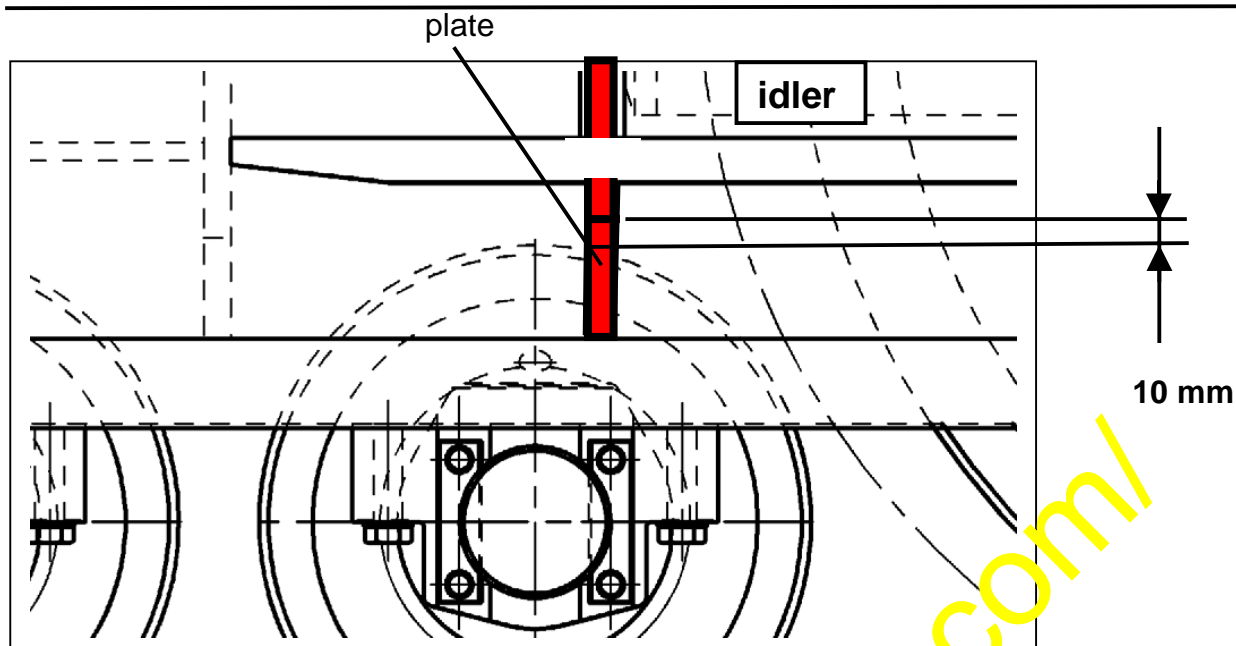
* R_Z = Peak-to-valley height, arithmetic means, determined over 5 measuring points.
Arithmetisches Mittel der Rauhtiefe aus 5 Einzelmessungen.



Support base



Roller bearing



There must be a gap of 10 mm between the contour of plate and the roller running surface, at the first and last bottom roller.

It may be you have to prepare the plates.

10 mm
grind smoothly (no notches)