

PARTS & SERVICE NEWS

REF NO. AT00054

DATE 5, July 2000

(C)

Page 1 of 6

SUBJECT: IMPROVED REINFORCED HANDRAIL BRACKETS

PURPOSE: Introduce modification procedures to reinforce the external handrails

APPLICATION: WA800-3 Wheel Loaders, Serial Nos. 50001 and up
WA900-3 Wheel Loaders, Serial Nos. 50001 and up
WA800-3LC Wheel Loaders, Serial Nos. A50001 and up
WA900-3LC Wheel Loaders, Serial Nos. A50001 and up

FAILURE CODE: 54D837

DESCRIPTION:

This Parts and Service News will introduce modification procedures to reinforce the handrails of the WA800-3 and WA900-3 wheel loaders being used under harsh operating conditions and subjected to severe vibrations and impact loads.

When reinforcing already shipped machines, follow the procedures outlined in this document.

No.	Part No.	Qty.	Description
1	427-54-22910	2	Bracket (Refer to page 6, when locally fabricating these parts.)
2	427-54-22920	6	Bracket (Refer to page 6, when locally fabricating these parts.)
3	427-54-22930	1	Bracket (Refer to page 6, when locally fabricating these parts.)
4	07283-33450	2	U-clamp
5	07283-53444	9	Seat
6	01597-01009	18	Nut
7	01643-31032	18	Washer
8	01010-81230	18	Bolt
9	01643-31232	18	Washer
10	01573-22390	7	Seat (For reworking)
11	01573-22360	2	Seat (For reworking)
12	01435-01020	1	Bolt
13	01435-01030	1	Bolt
14	01643-31032	1	Washer
15	01580-01008	1	Nut

Contents of the modification:

By supplementing reinforcement brackets to the rear access ladder handrails, the strength to resist vibration has been enhanced.

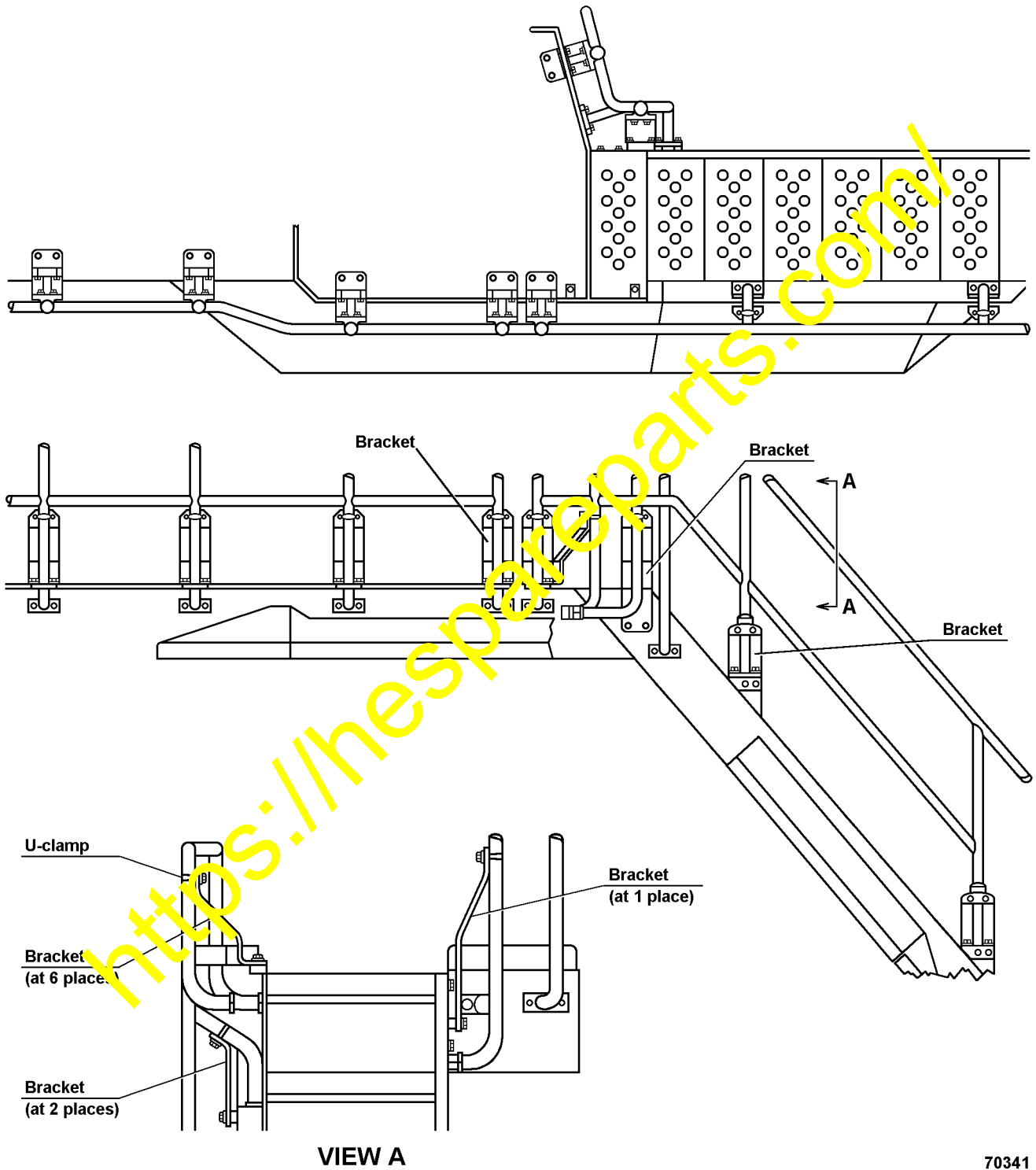


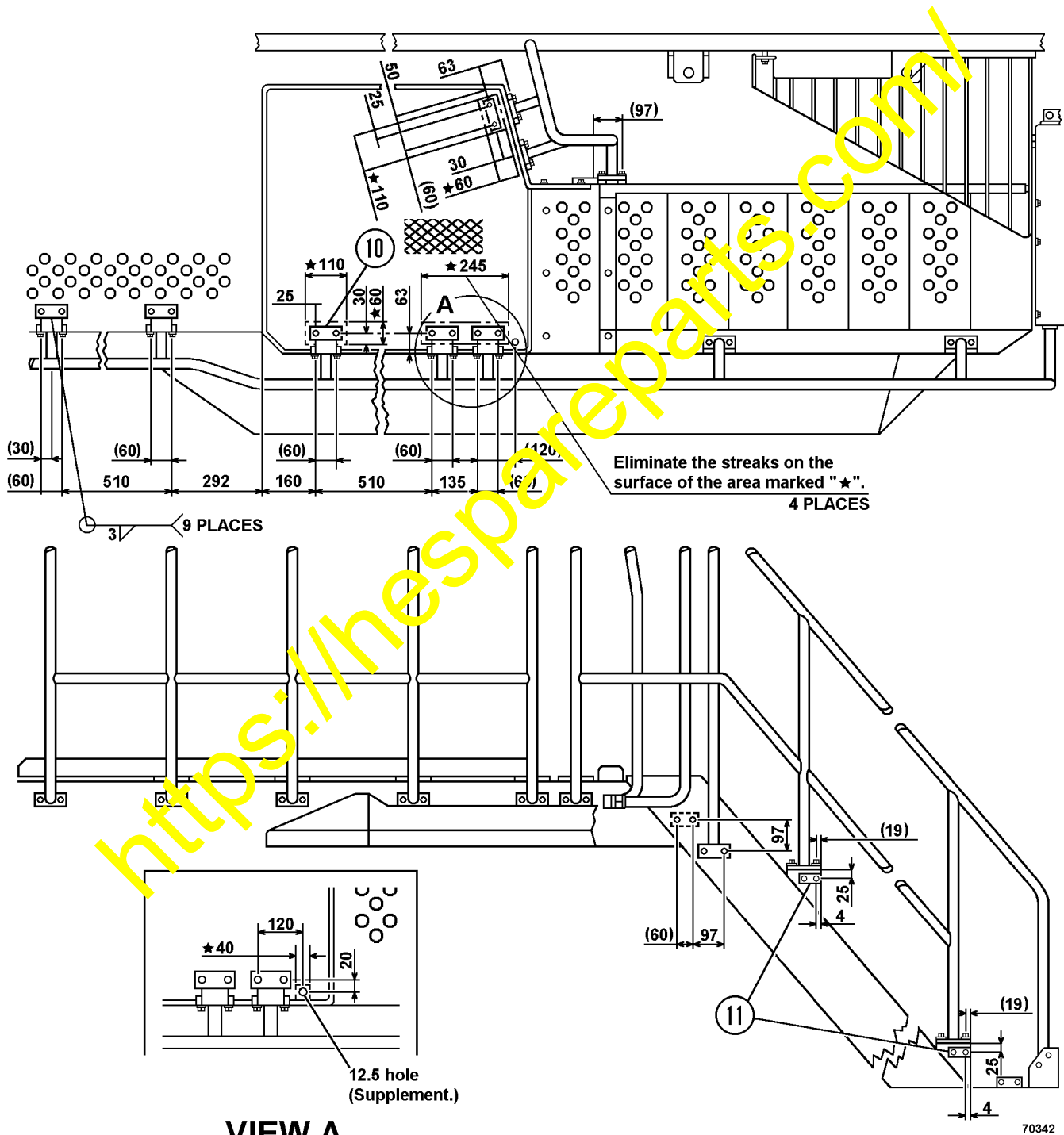
Figure 1. Rear View of Loader

Reworking procedures:

Supplement to weld the seats (10 & 11, Figure 2) and drill a hole (ø12.5) at the positions in the schematic diagram given below. The seats may be welded by job-site gauging using the bracket shown on page 5.

Note: After finishing this reworking, apply corrective paint (Cloud Gray).

Note: ALL dimensions are in millimeters.



VIEW A

Figure 2. View From Left Side of Loader

70342

Rework the bracket at the upper section of the rear access step.

- a. Cut the hatched section according to the dimensions indicated in the drawing.
- b. Remove the lug marked (Item 1) to shift its position.

Note: After finishing this reworking, apply corrective painting (Cloud Gray).

Note: ALL dimensions are in millimeters.

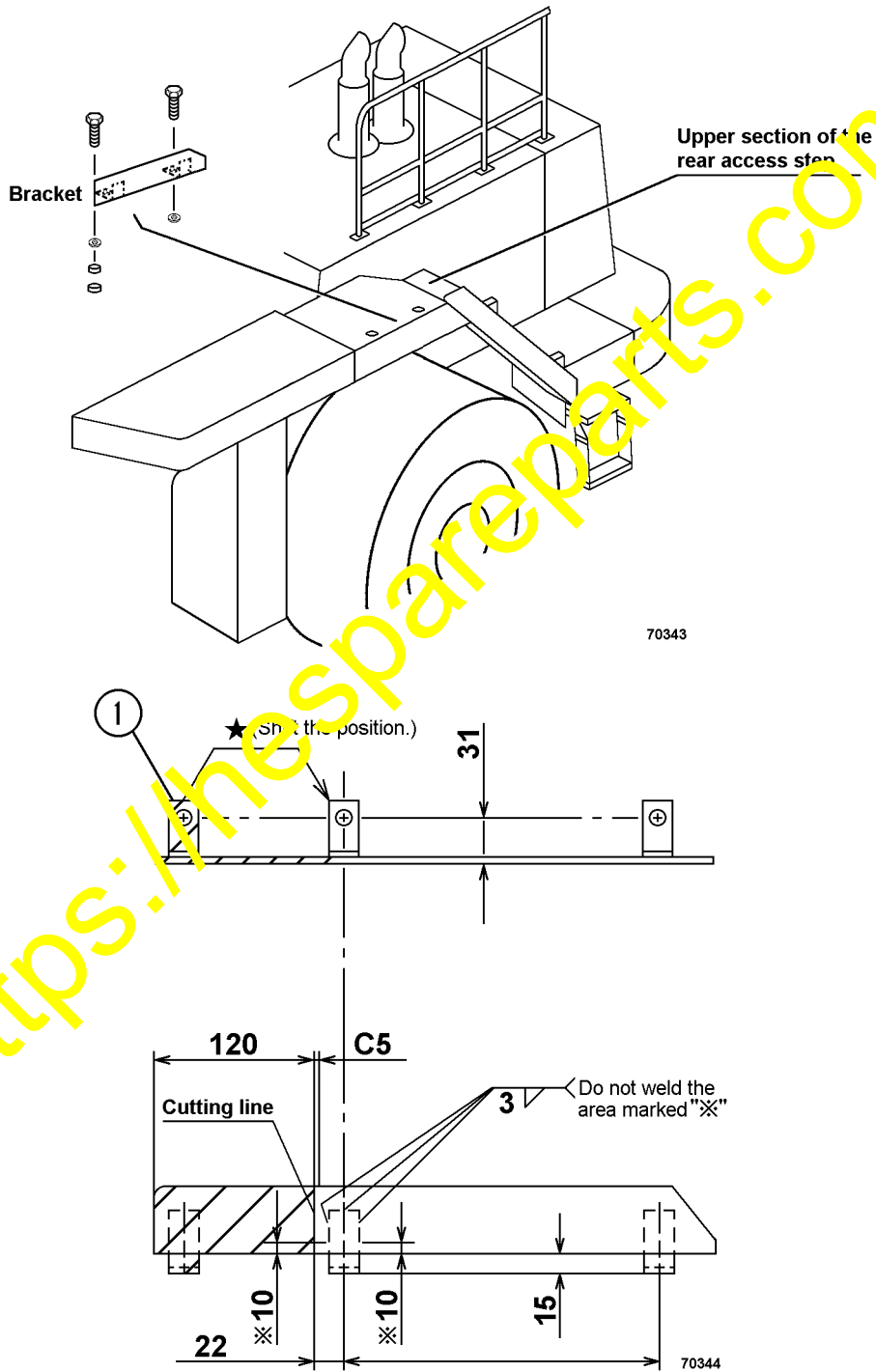


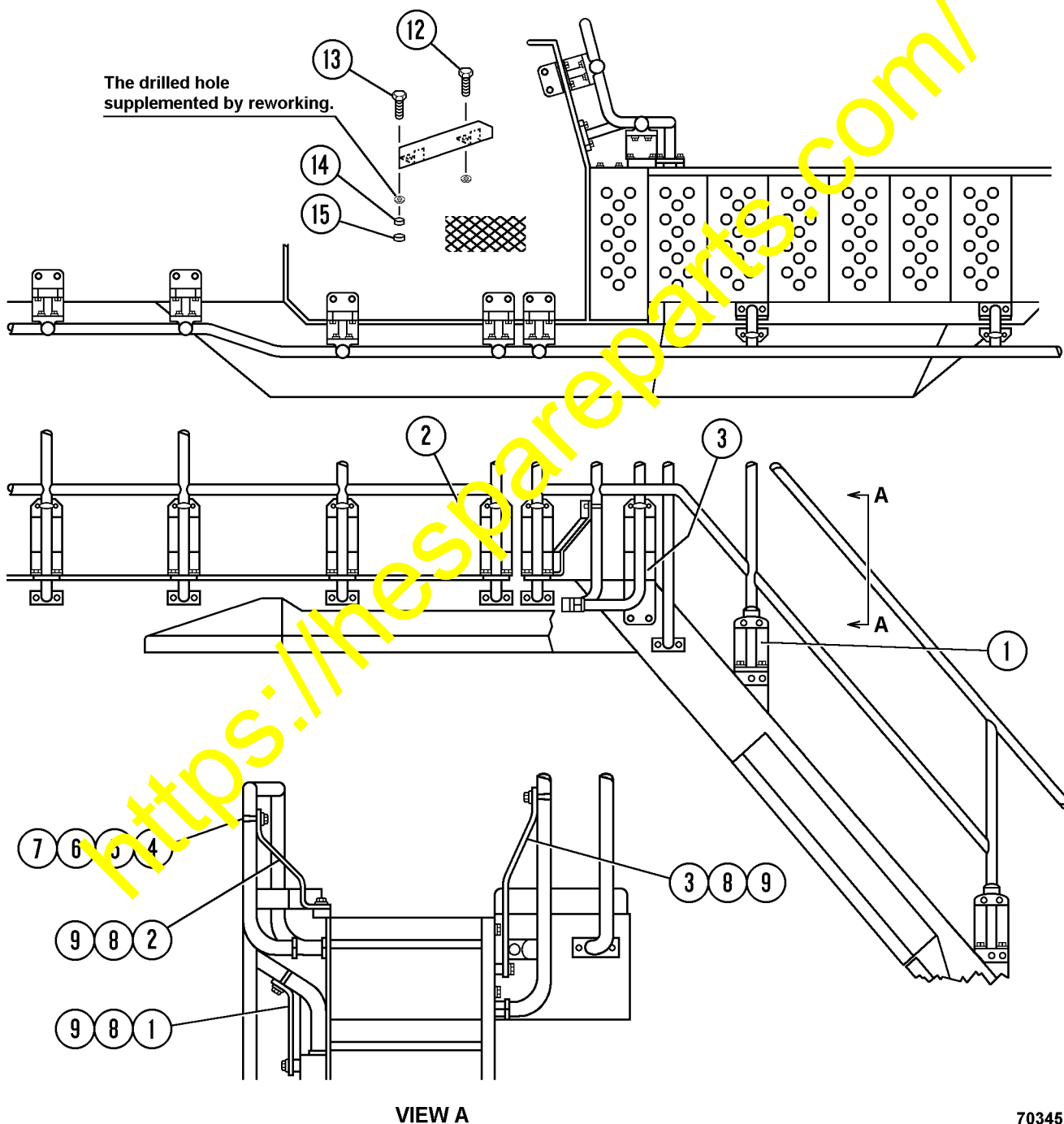
Figure 3. Reworking Bracket

Installation procedures:

Install the prepared parts according to the instructions indicated in the drawing below.

Note: Torque values:

- Bolt 98-123 Nm
(Size: M12) (10-12.5 kgm)
- U-clamp 10.8-26.5 Nm
(1.1-2.7 kgm)



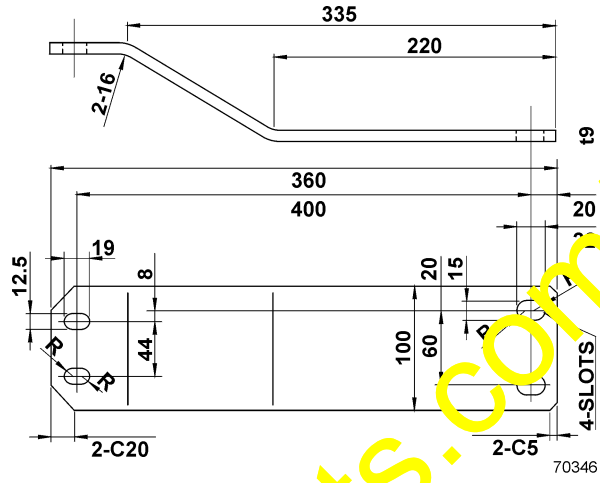
70345

Figure 4. Installing Brackets for Handrails

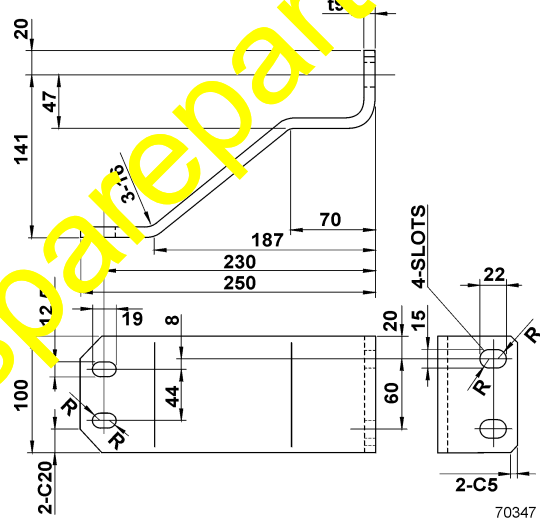
When locally fabricating these parts, refer to the following drawings.

Note: ALL dimensions are in millimeters.

PART NO. 427-54-22930
 PART NAME BRACKET
 MATERIAL SS400F
 PAINT CLOUD GRAY
 QTY. 1



PART NO. 427-54-22920
 PART NAME BRACKET
 MATERIAL SS400F
 PAINT CLOUD GRAY
 QTY. 6



PART NO. 427-54-22910
 PART NAME BRACKET
 MATERIAL SS400F
 PAINT CLOUD GRAY
 QTY. 2

