

PARTS & SERVICE NEWS

REF NO.	AT00244
DATE	Nov. 27, 2000
(C)	Page 1 of 11

SUBJECT: INTRODUCTION OF LOW OPERATOR COMPARTMENT NOISE SPEC. PARTS FOR HD325/405-6

PURPOSE: To introduce newly prepared "low compartment noise spec. parts" for installation on HD325-6 and HD405-6 dump trucks

APPLICATION: HD325-6 Dump Trucks, Serial Nos. 5001 and up
HD405-6 Dump Trucks, Serial Nos. 1001 and up

FAILURE CODE: 551069

DESCRIPTION:

1. Introduction

This Service News will introduce "low compartment noise spec. parts" newly prepared to suppress the noise level inside the operator's compartment (to 80dB(A) or less at operator's ear by SAE J919 or equivalent) of the HD325-6 and HD405-6 dump trucks and the installation procedures thereof.

2. List of parts

No.	Part No.	Part Name	Q'ty	Remarks
1	569-89-65110	Plate	1	
2	569-89-65120	Plate	1	
3	569-89-65130	Plate	1	
4	569-89-65140	Plate	1	
5	569-89-65150	Plate	1	
6	569-89-65160	Plate	1	
7	569-89-65170	Plate	1	
8	569-89-65210	Damper	1	
9	569-89-65220	Damper	1	
10	569-89-65230	Damper	1	
11	569-89-65240	Damper	1	
12	569-89-65250	Damper	1	
13	569-89-65260	Damper	1	
14	569-89-65270	Damper	1	
15	569-89-65280	Damper	1	
16	569-89-65290	Damper	1	
17	569-89-65310	Damper	1	
18	569-89-65320	Damper	1	
19	569-89-65410	Sheet	1	
20	569-89-65420	Sheet	1	
21	569-89-65430	Sheet	1	
22	569-89-65440	Sheet	1	
23	569-89-65450	Sheet	1	
24	569-89-65460	Sheet	1	
25	569-89-65470	Sheet	1	
26	569-89-65480	Sheet	1	
27	569-89-65490	Sheet	1	
28	569-89-65510	Sheet	1	
29	569-89-65520	Sheet	1	
30	569-89-65530	Sheet	1	

No.	Part No.	Part Name	Q'ty	Remarks
35	01572-21019	Seat	49	
36	566-89-45180	Seat	2	
37	01010-81025	Bolt	51	
38	01643-31032	Washer	51	
39	421-09-21380	Grommet	2	

<https://hespareparts.com/>

3. Contents of the modification

To suppress the noise level inside the operator's compartment, supplement the following structures and parts to improve the noise insulation factor against noise coming from external sources.

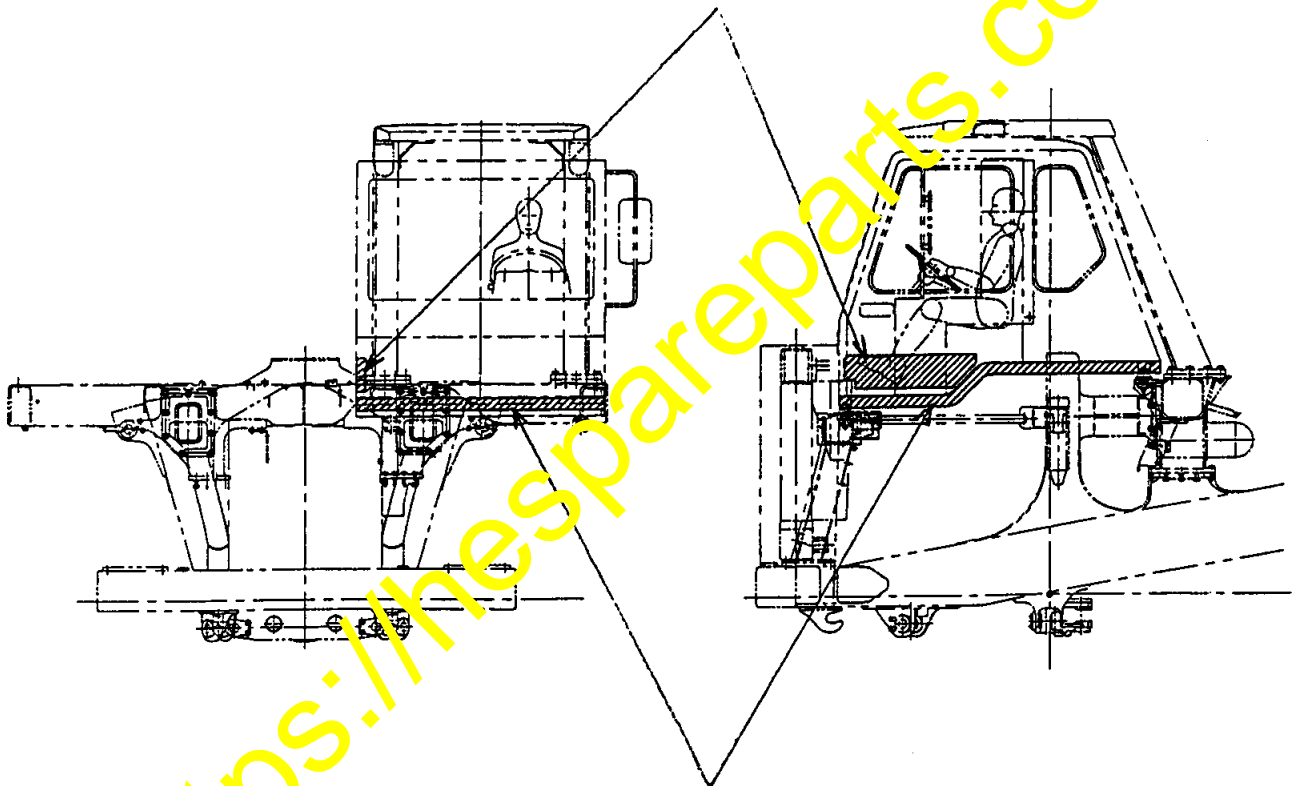
(1) Making the cab floor to a duplex structure

Making the cab floor to a duplex structure, insert dampers and sound absorbing material sheets in between.

(2) Supplementing the dampers and sound absorbing materials to the lower section of the RH door of the operator's cab

Since this section is hollow inside, supplement the dampers and sound absorbing materials in there.

(2) Supplementing the damper and sound absorbing materials to the lower section of the RH door of the cab



(1) Making the cab floor to a duplex structure

4. Checks to make before starting this modification work.

Before starting this modification work, check the following points and, when deemed necessary, make due adjustment or replacement.

(1) Checking the sealing capacity of the LH operator's cab door

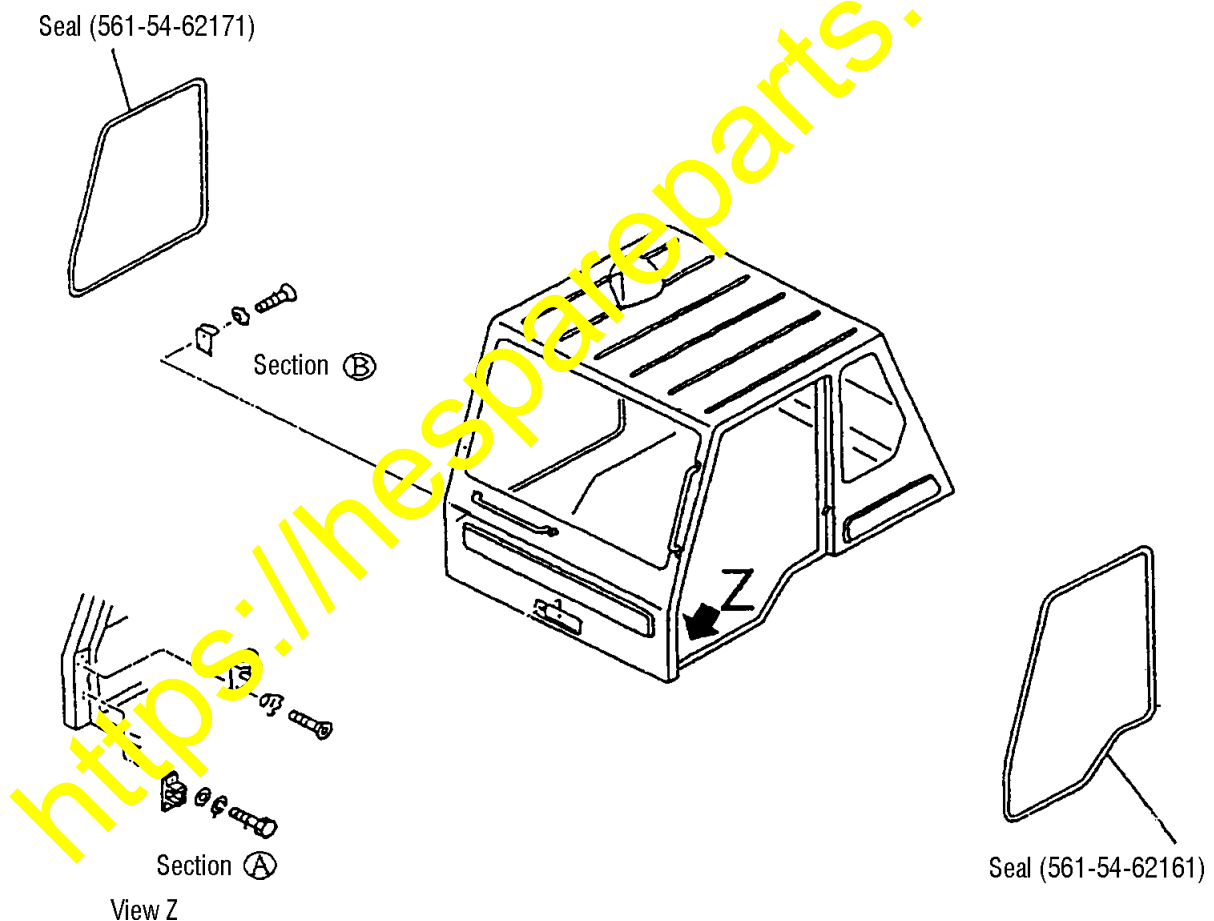
Check and make sure that the door seal (561-54-62161) is being flattened evenly when the door is closed, thus providing secure sealing effect. If the seal is not being flattened evenly, adjust the section ①.

Also, when the seal is found defective, replace it with a new seal.

(2) Checking the sealing capacity of the RH operator's cab door

Check and make sure that the door seal (561-54-62171) is being flattened evenly when the door is closed, thus providing secure sealing effect. If the seal is not being flattened evenly, adjust the section ②.

Also, when the seal is found defective, replace it with a new seal.



5. Installation procedures

Park the vehicle on a level place, apply the parking brake, turn off the starting key and insert tire wedges underneath respective tires.

Open the battery box and disconnect the negative terminal connection of the battery.

5-1. Removing the parts which need to be removed for this modification

(1) Covers (Refer to Fig. 1.)

- ① Remove the steering valve cover (566-54-6A581) located underneath the operator's cab.
- ② Remove the lower-cover (561-54-62382) for the RH door.
(These covers are to be reused.)

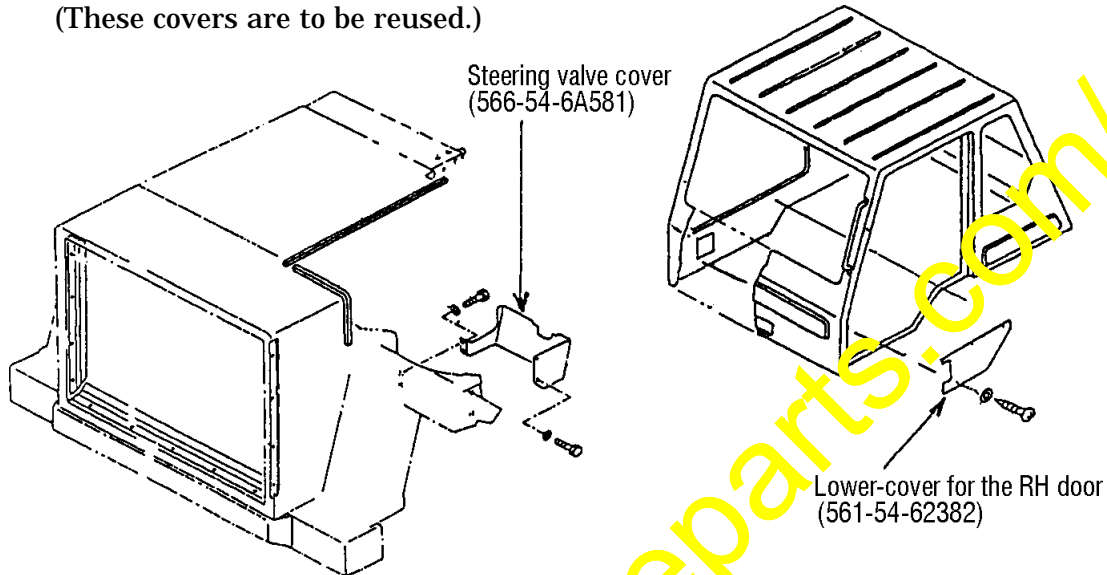


Fig. 1

(2) Clamps for the hoses and harnesses (Refer to Fig. 2.)

- ① Remove the harness clamps (at 2 places) located in the front section on the underside of the operator's cab floor.
- ② In case of an air conditioned vehicle, remove the drain hose clamps (at 3 places).
(These clamps are being restored.)

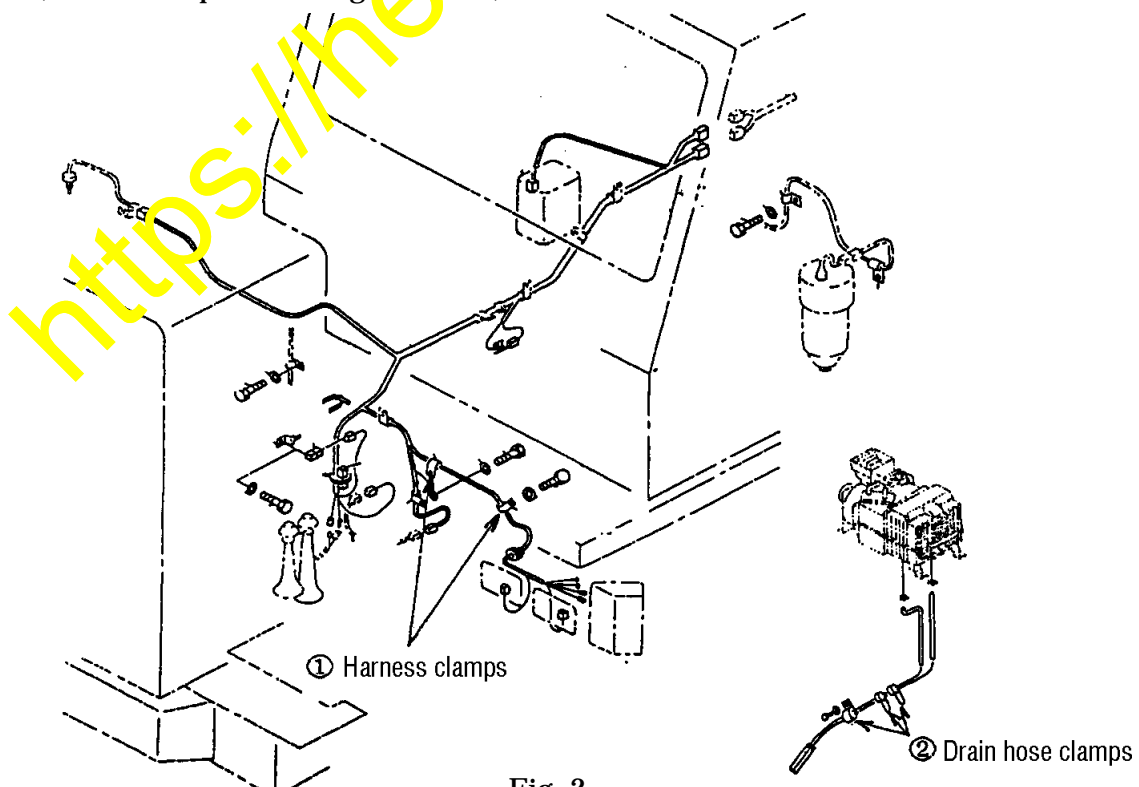


Fig. 2

5-2. Reworking with the operator's cab floor (Refer to Fig. 5.)

(1) Installing the seats

Weld the seat ⑳ (01572-21019) and the seat ㉑ (566-89-45180) onto the bottom surface of the operator's cab floor.

※ **Connect the grounding lead of the welder to the cab GND section located on the bottom surface, in the front section toward left, of the cab floor.**

5-3. Installing the prepared parts

(1) Installing the prepared parts to the bottom surface of the operator's cab floor (Refer to Fig. 6 thru Fig. 8.)

1) Dampers

After welding the seats onto the bottom surface of the operator's cab floor, thoroughly clean to remove welding spatters, mud and dirt from the bottom surface of the operator's cab floor.

Apply the dampers ⑧ thru ⑰ onto the bottom surface of the operator's cab floor. Since adhesive is being pre-applied onto one side of the dampers, remove the protection sheet before applying the dampers. At this time, depress the dampers onto the bottom surface of the operator's cab floor using a hammer or the seat.

2) Sheets (Sound absorbing material)

Apply the sheets ⑱ and ㉒ thru ㉔ onto the surface of the dampers which have been applied onto the bottom surface of the operator's cab floor according to the procedure in the above Paragraph 1).

Since adhesive is being pre-applied onto one side of these sheets, remove the protection sheet before applying them onto the damper surfaces.

As for the sheets ㉕ and ㉖, remove the steering column cover (561-54-63231) located inside the operator's cab to apply them onto the upper surface of the floor. (Refer to Fig. 3.)

3) Plates

Install the plates ① thru ⑦ onto the bottom surface of the operator's cab floor using bolts ㉗ (01010-81025) and washers ㉘ (01643-31032).

At this time, install the removed harness clip to the plate. Also, install the operator's cab grounding cable located in the rear section of the cab to the plate.

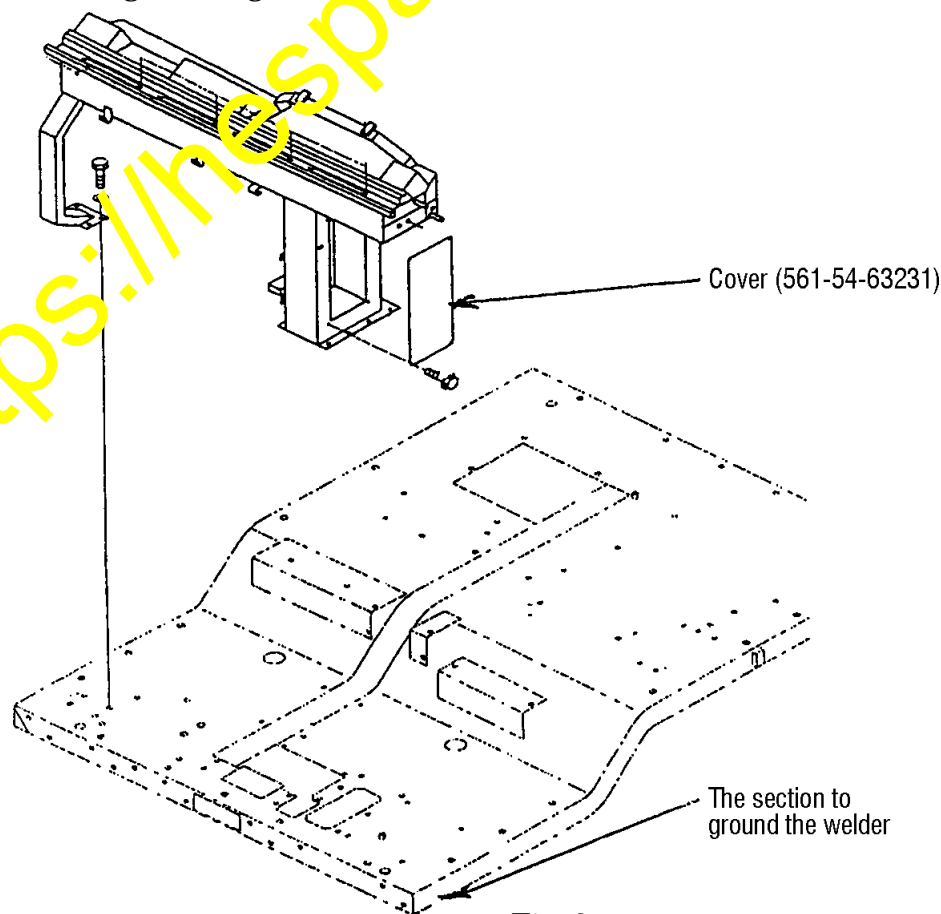


Fig. 3

- (2) Installing the prepared parts to the lower section of the RH door of the operator's cab (Refer to Fig. 4.)

Apply the damper ⑱ (569-89-65320) to the surface at the section from where the lower-cover (561-54-62382) for the RH door has been removed. Since adhesive is being pre-applied onto one side of the damper, remove the protection sheet before applying the damper. At this time, depress the damper onto the operator's cab panel using a hammer or the sort.

Apply the sheet ⑳ (569-89-65530) onto the surface of the damper ⑱. Since adhesive is being pre-applied onto one side of this sheet, remove the protection sheet before applying the sheet onto the damper surface.

If it is difficult to apply the aforementioned damper ⑱ and sheet ⑳ in whole being hindered by existence of the air conditioner hoses or other structures, they may be split to appropriate shapes.

Finally, install the lower-cover for the RH door to its original position.

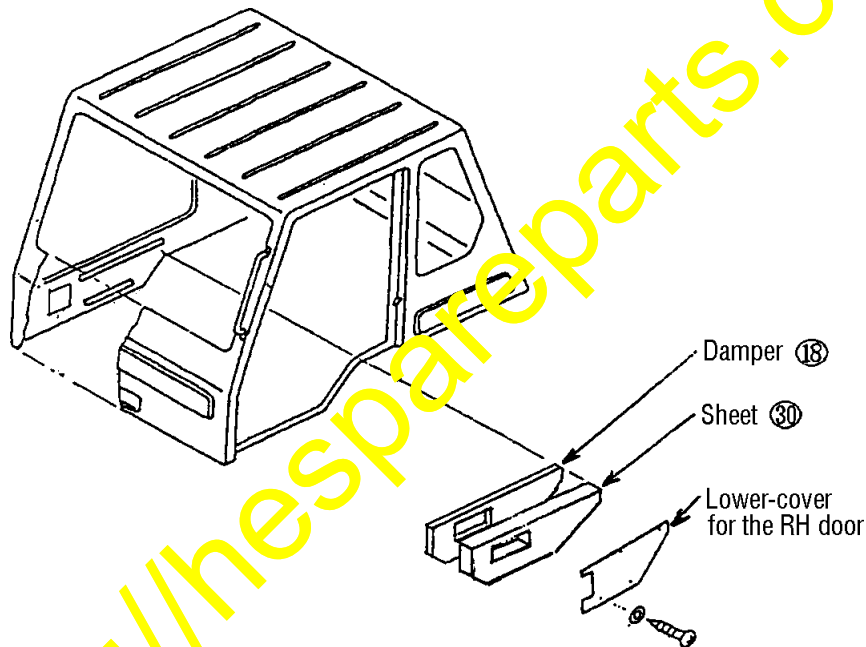


Fig. 4

After completing installation of all the low compartment noise spec. parts, reconnect the negative terminal connection of the battery.

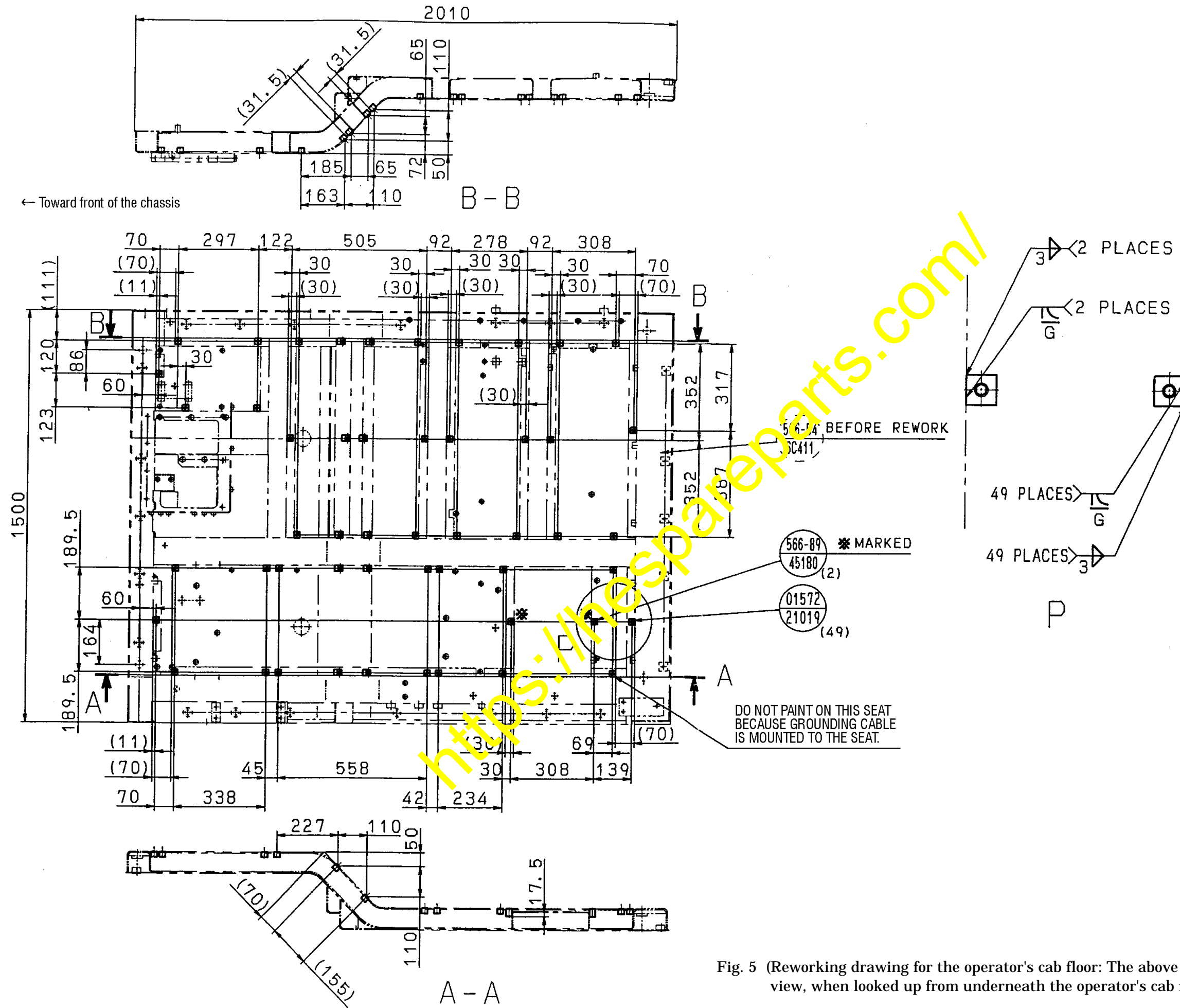


Fig. 5 (Reworking drawing for the operator's cab floor: The above drawing is a bottom view, when looked up from underneath the operator's cab floor.)

← Toward front of the chassis

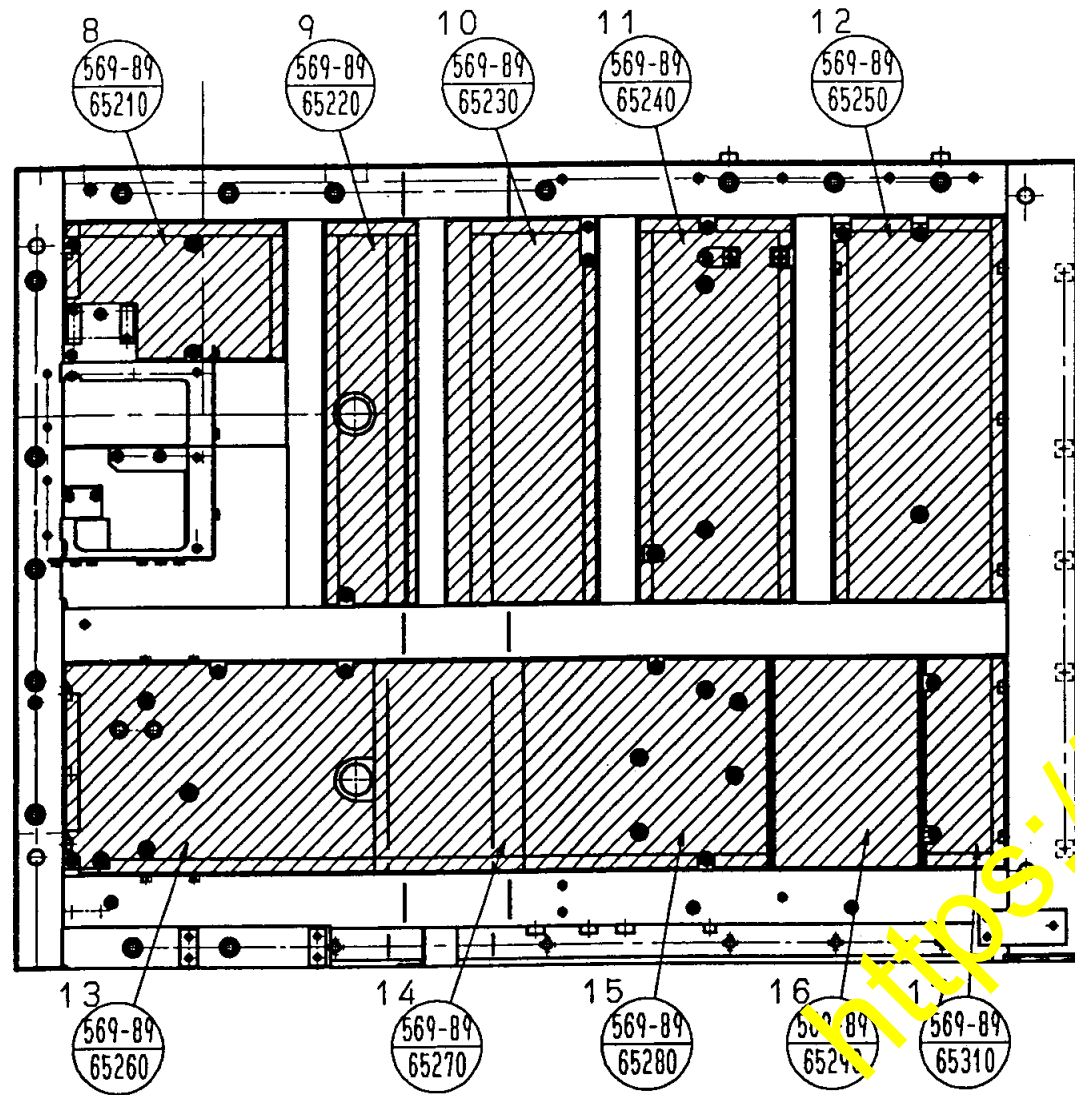


Fig. 6 (Drawing for installation of the dampers: The above drawing is a bottom view, when looked up from underneath.)

← Toward front of the chassis

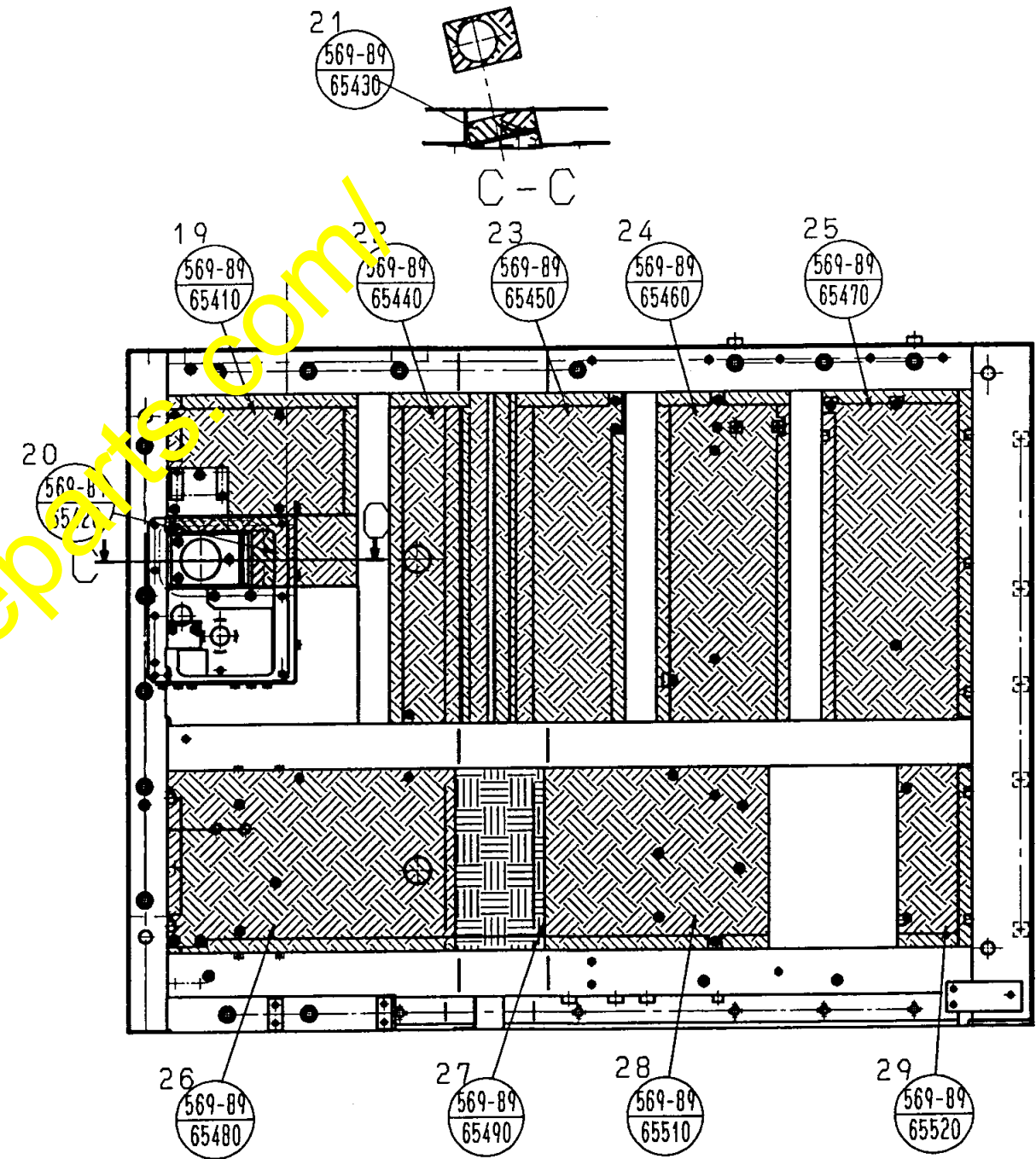


Fig. 7 (Drawing for installation of the sheets: The above drawing is a bottom view, when looked up from underneath.)

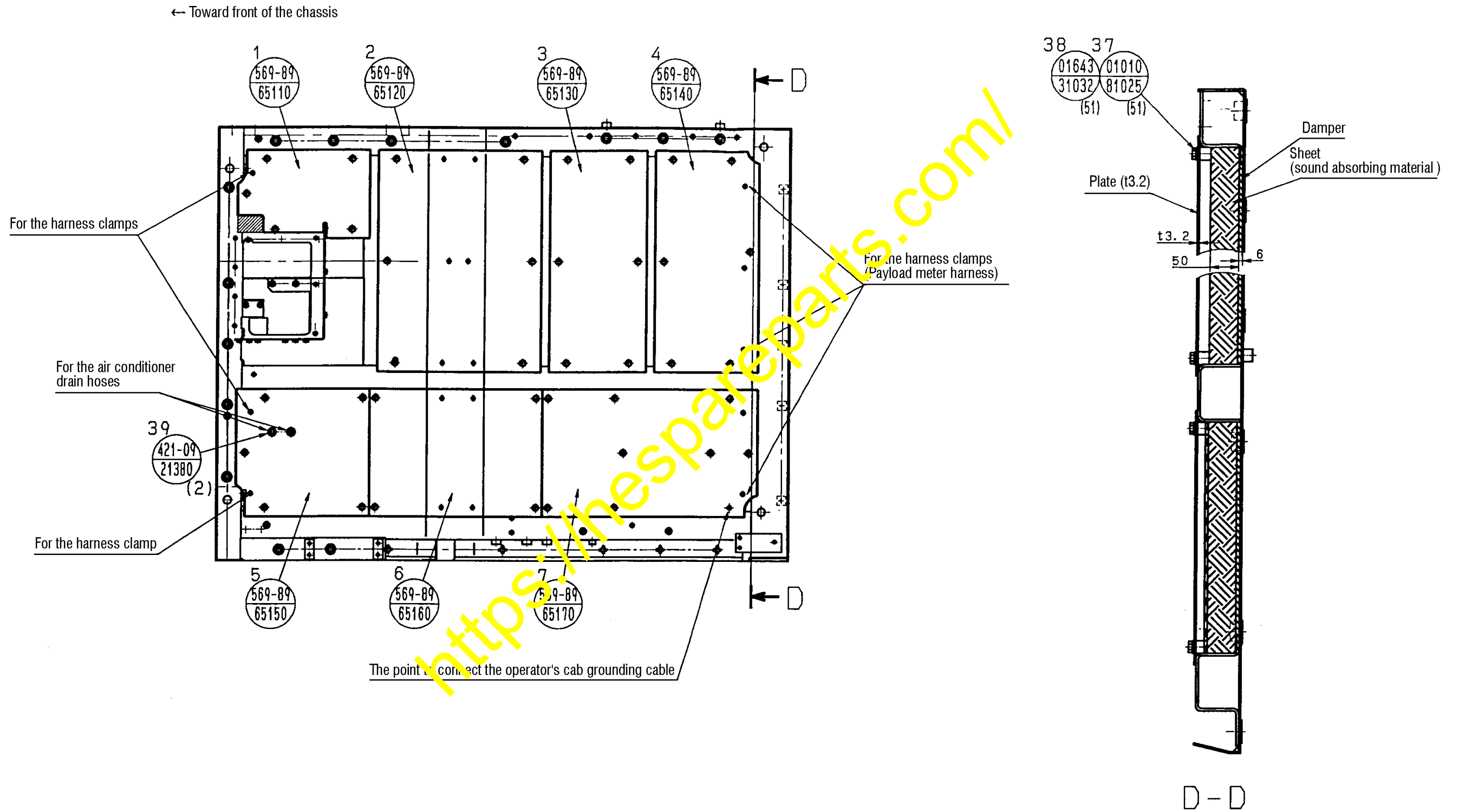


Fig. 8 (Drawing for installation of the plates: The above drawing is a bottom view, when looked up from underneath.)