

PARTS & SERVICE NEWS

REF NO.	AT00281
DATE	Feb. 2, 2001

Page 1 of 3

SUBJECT: REPAIR TO IMPROVE WATERPROOF-ABILITY OF T/M CONTROLLER MOUNTING SECTION ON WA200/250-3

PURPOSE: To introduce modification procedures to improve the water proofing capacity of the transmission controller mount section on WA200-3 and WA250-3 wheel loaders (CANOPY or cab-less, CANOPY'less + automatic-shift transmission)

APPLICATION: WA250-3A Wheel Loaders, Serial Nos. 50001 thru (54011)
 WA250L-3 Wheel Loaders, Serial Nos. 50001 thru (54011)
 WA250PT-3A Wheel Loaders, Serial Nos. 50001 thru (51006)

[Serial Nos. in parenthesis indicate those on which T/M controller is to be set as option for general overseas use. Changes, if any, to be corrected by issuing revision.]

FAILURE CODE: DAQ016

DESCRIPTION:

1. Introduction

With the WA200-3 and WA250-3 wheel loaders equipped with the optional CANOPY and automatic-shift transmission, if rain water penetrates into the console box to cause shorting in the transmission controller circuit located inside the console box making it unworkable to have the machine travel forward nor backward, make the modification being introduced in this Service News to repair the failure.

2. List of parts

Part No.	Part Name	Purpose of part	Q'ty	Remarks
418-T33-2210 (418-T33-2152)	Bracket (Bracket)	Replacement	1 (1)	The current part can be used for machines equipped with the operator's cab.
09415-01610	Cap	Additional	2	
01435-00825 (01435-00825)	Bolt (Bolt)	Replacement	3 (3)	The current part can be used for machines equipped with the operator's cab.
418-T33-2190 (418-T33-2160)	Plate (Plate)		1 (1)	
01435-00816 (01435-00816)	Bolt (Bolt)	2 (2)		
418-T33-2220	Seal	Additional	1	

3. Contents of the modification

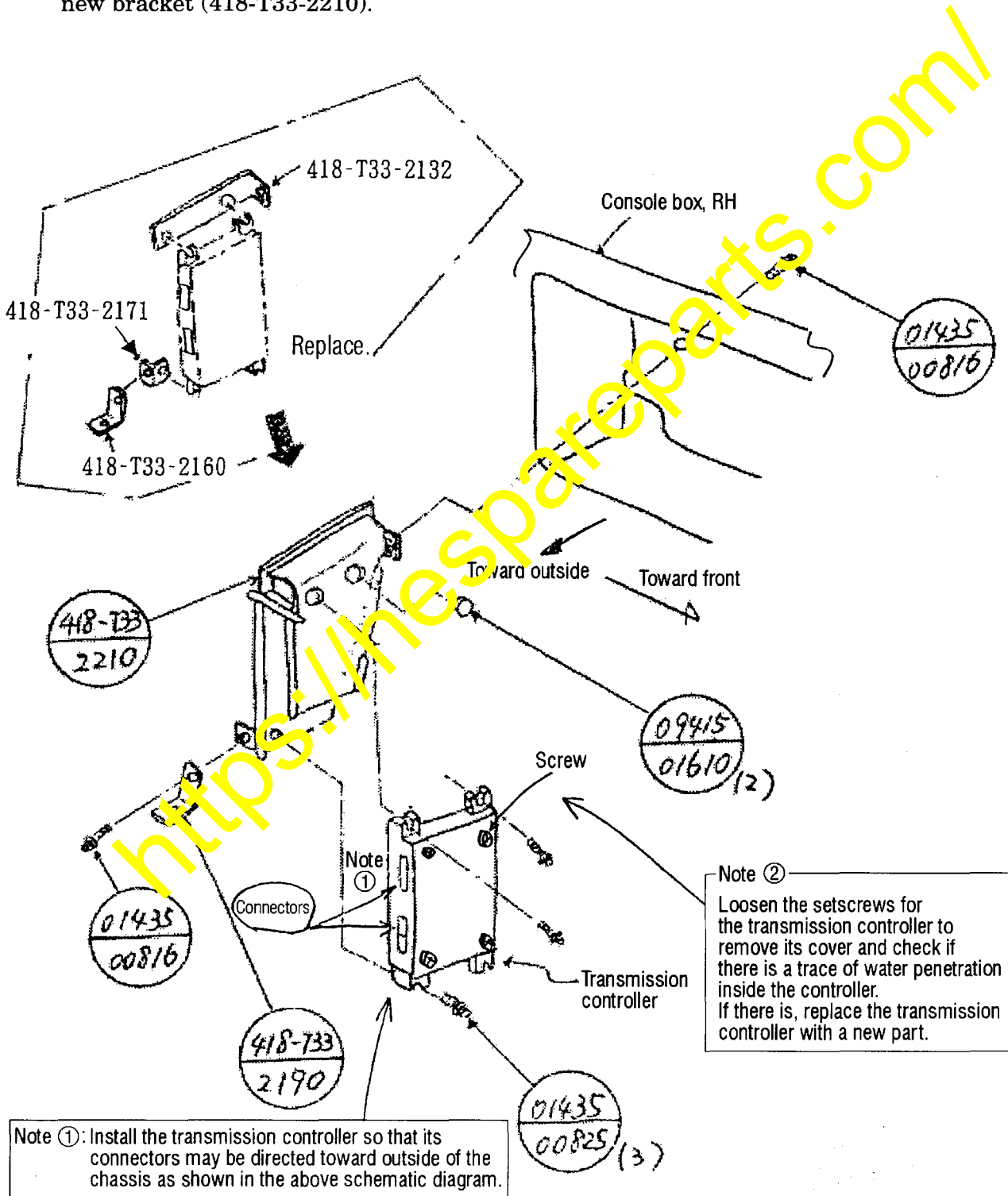
The water proofing capacity has been improved by the following modifications

- (1) The shape of the transmission controller mounting bracket has been changed into a drip-proof type.
- (2) A seal has been supplemented to the sub-monitor cover.

4. Modification procedures

4-1. Replacing the transmission brackets

According to the instructions given in the schematic diagrams indicated below, replace the transmission control bracket located inside the RH console box with the prepared new bracket (418-T33-2210).



4-2. Supplementing the sub-monitor seal

Apply the prepared supplementary seal to cover the opening of the sub-monitor as shown in the schematic diagrams indicated below.

