

**PARTS & SERVICE
NEWS**

REF NO.	AT01021
DATE	Mar. 9, 2001
(C)	Page 1 of 3

SUBJECT: IMPROVED TORQUE CONVERTER HOSE ON HD465-5/HD605-5

PURPOSE: To introduce improved torque converter circuit hoses with increased durability for use on HD465-5 and HD605-5 dump trucks

APPLICATION: HD465-5 Dump Trucks, Serial Nos. 4001 thru 4885
HD605-5 Dump Trucks, Serial Nos. 1001 thru 1126

FAILURE CODE: 6BM136

DESCRIPTION:

1. Introduction

On the HD465-5 and HD605-5 dump trucks, the torque converter circuit hoses connecting between the torque converter pump and the filter and between the filter and the torque converter valve may suffer durability deterioration owing to peak pressures occurring from pulsations in the discharge pressure of the torque converter pump.

This Service News will introduce improved hoses with increased durability to use for the aforementioned circuit and follow the installation procedures outlined herein when replacing these hoses.

2. List of parts

No.	Part No.	Part Name	Q'ty	Remarks
1	07118-01207 (07298-01207)	Hose (Hose)	1 (1)	
2	07118-01208 (07298-01208)	Hose (Hose)	1 (1)	
3	569-16-51142 (569-16-51141)	Tube (Tube)	1 (1)	
4	67000-F3038	O-ring	5	Consumable part

3. Contents of the modification

- 1) The specifications of the hoses have been changed from "3 MPa {30.6 kg/cm²}" proof pressure to "14 MPa {143 kg/cm²}" proof pressure.
- 2) The shapes of the tubes have been modified to improve the bending state of the hoses.

4. Installation procedures

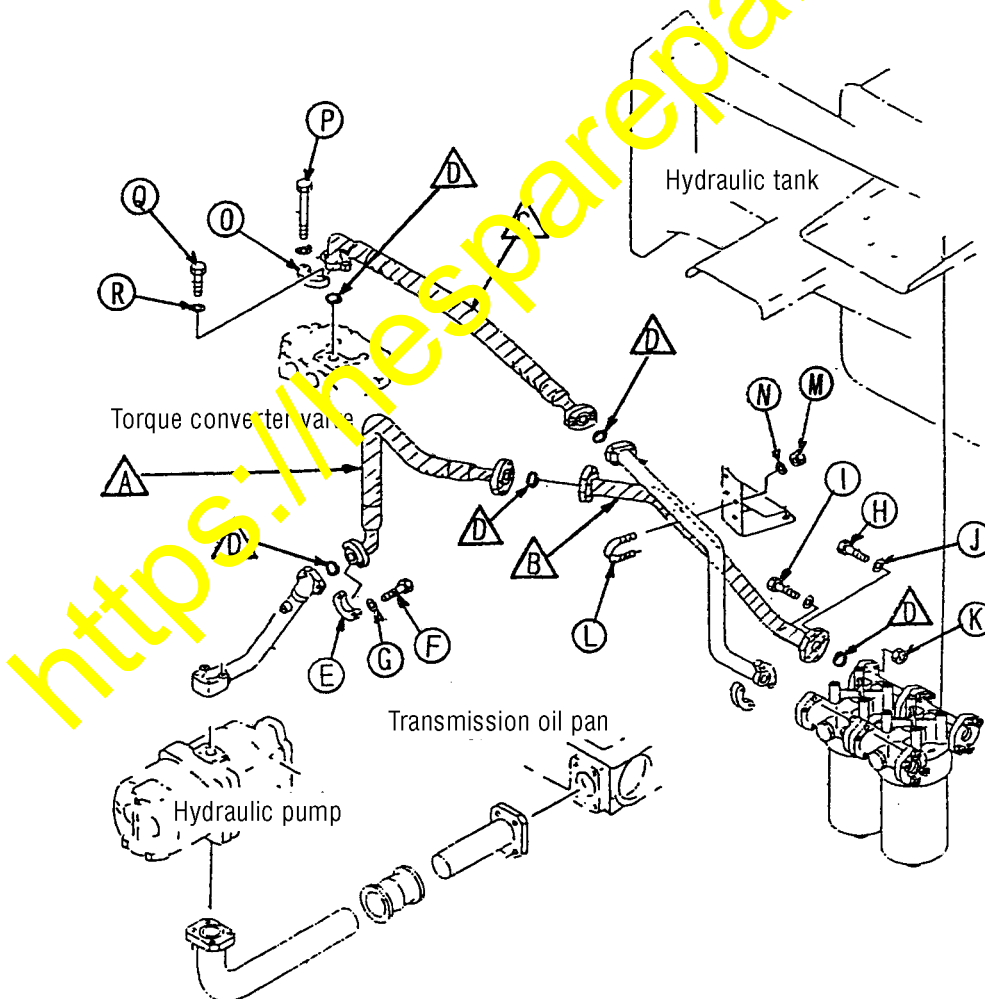
Numbers in () printed after the part names on the next page and numbers shown in the schematic diagram correspond to the item numbers given in the list of necessary parts.

4.1 Removing the parts which need to be removed for this modification

Parts with their marks surrounded by ○ in the schematic diagram indicated below are being reused after removal.

Parts with their marks surrounded by △ in the schematic diagram indicated below are not being reused after removal.

Remove the hose (A) and tube (B) connecting between the torque converter charge pump and the filter and the hose (C) connecting between the filter and the torque converter valve.



4.2 Installing the parts.

Install the newly prepared hoses (1) & (2) and tube (3).
As for the O-rings (4), replace them with new parts.

The bolt tightening torque range should be 59 - 74 Nm {6.0 - 7.5 kgm}.

Nonetheless, the tightening torque range for the hose flange mounting bolt should be 44 - 54 Nm {4.5 - 5.5 kgm}.

Also, the U-bolt nut tightening torque range should be 10.8 - 26.5 Nm {1.1 - 2.7 kgm}.

