

PARTS & SERVICE NEWS

| | |
|---------|---------------|
| REF NO. | AT01148 |
| DATE | Sep. 14, 2001 |

Page 1 of 3

SUBJECT: INTRODUCTION OF REINFORCED TYPE OF DETENT BLOCK ON GD825A-2

PURPOSE: To introduce a reinforced detent block for use on GD825A-2 motor graders

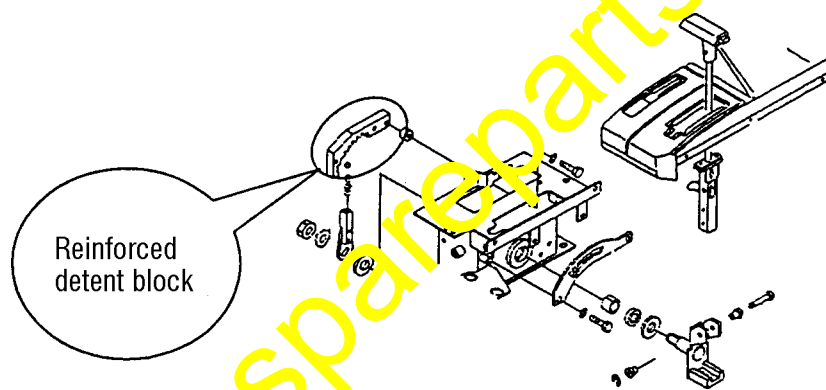
APPLICATION: GD825A-2 Motor Graders, Serial Nos. 11001 thru 12098

FAILURE CODE: 4360CC

DESCRIPTION:

1. Introduction

This Service New introduces a reinforced detent block for a speed shifting lever on GD825A-2 motor graders.



2. List of parts

| No. | Part No. | Part Name | Q'ty | Remarks |
|-----|--------------------------------|------------------|----------|---------|
| 1 | 235-45-33331 (235-45-33330) | Block (Block) | 1 (1) | Fig-1 |

3. Contents of the modification

- ① Reinforced part (Modified part) 235-45-33331 BLOCK

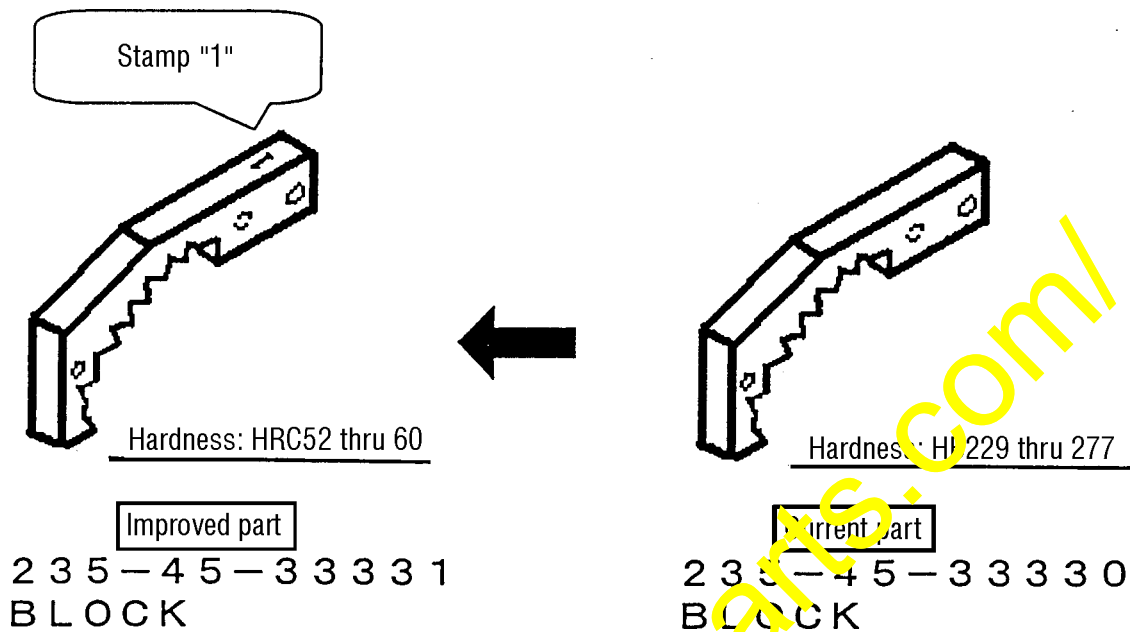


Fig. 1 Improved part

4-1. Modification procedure (Precautions before starting the modification work)

- 1) Carry out this modification work at a place (indoor site, etc.) sheltered from dust, rainfalls, etc.
- 2) Carry out this modification work on a level and hard surface.
- 3) Stop an engine and lower work equipment to the ground before starting this modification work.

Refer to the Shop Manual regarding the detailed installation procedure.

4-2. Modification procedure

- 1) Remove the part ① and install the improved part. (Make sure that number of "1" is stamped on the improved part. Refer to Fig. 1.)

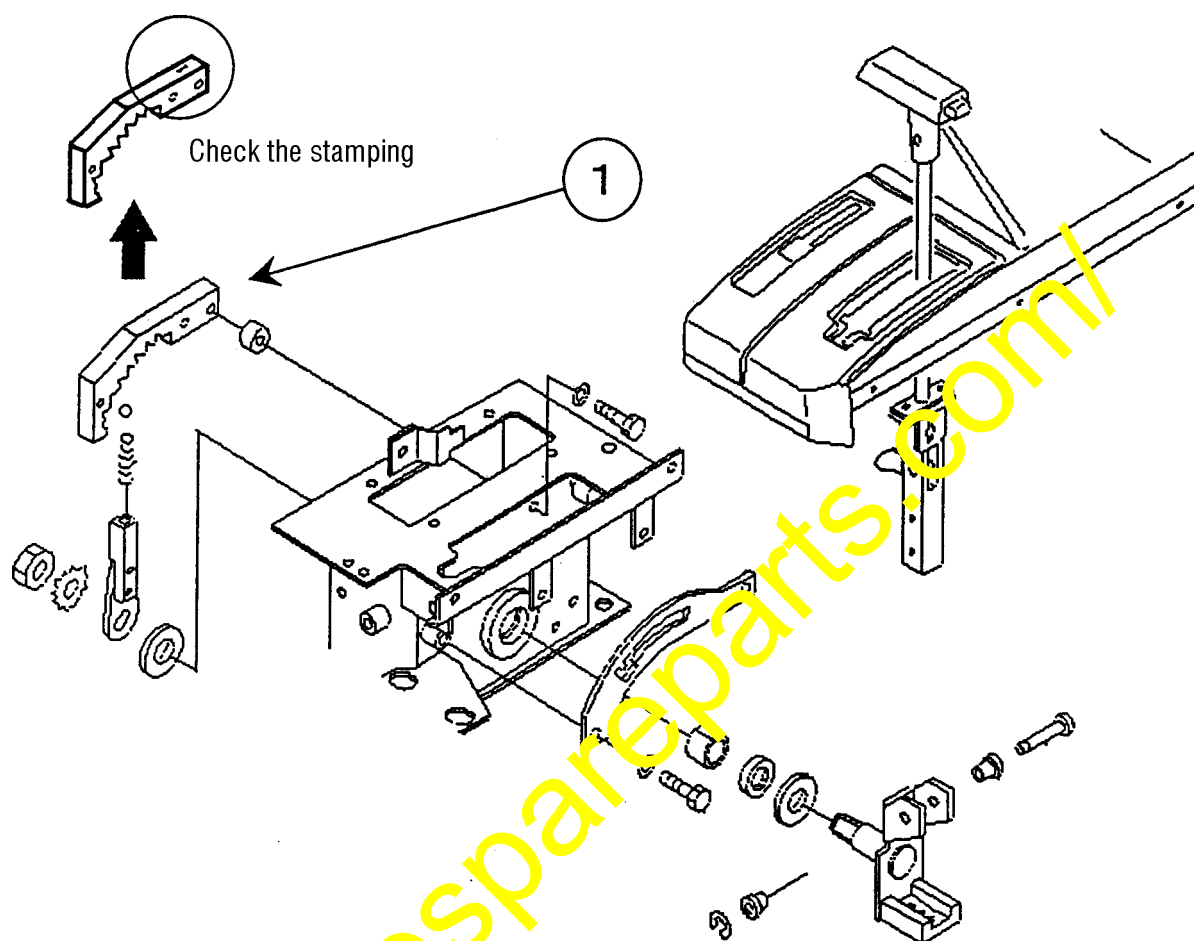


Fig. 1 Modification procedure (Replacement of parts)

- 2) Refer to the Section "Inspection and Adjustment" in the Shop Manual for adjustment of the lever after the replacement work.