

PARTS & SERVICE NEWS

REF NO.	AT01222
DATE	Dec. 25, 2001

Page 1 of 4

SUBJECT: REPAIR OF CRACK AND REINFORCEMENT ON EXTERIOR ON WA1200-3

PURPOSE: To introduce modification procedures to repair cracks of the external parts and to reinforce their structures on the WA1200-3 wheel loaders

APPLICATION: WA1200-3 Wheel Loaders, Serial Nos. 50001 thru 50006

- | |
|---|
| ① Mounting section of the engine hood mount bracket
50004 thru 50010 |
| ② Mounting section of the bulk head |

FAILURE CODE: 542BHA

DESCRIPTION:

1. Introduction

There is a possibility of occurrence of cracks at the ① mounting section of the engine hood mount bracket and ② mounting section at the front side of the bulk head when the WA1200-3 wheel loaders are used for long time.

When the above cracks occur, implement the modification following the modification procedures being outlined in this Service News.

2. List of parts

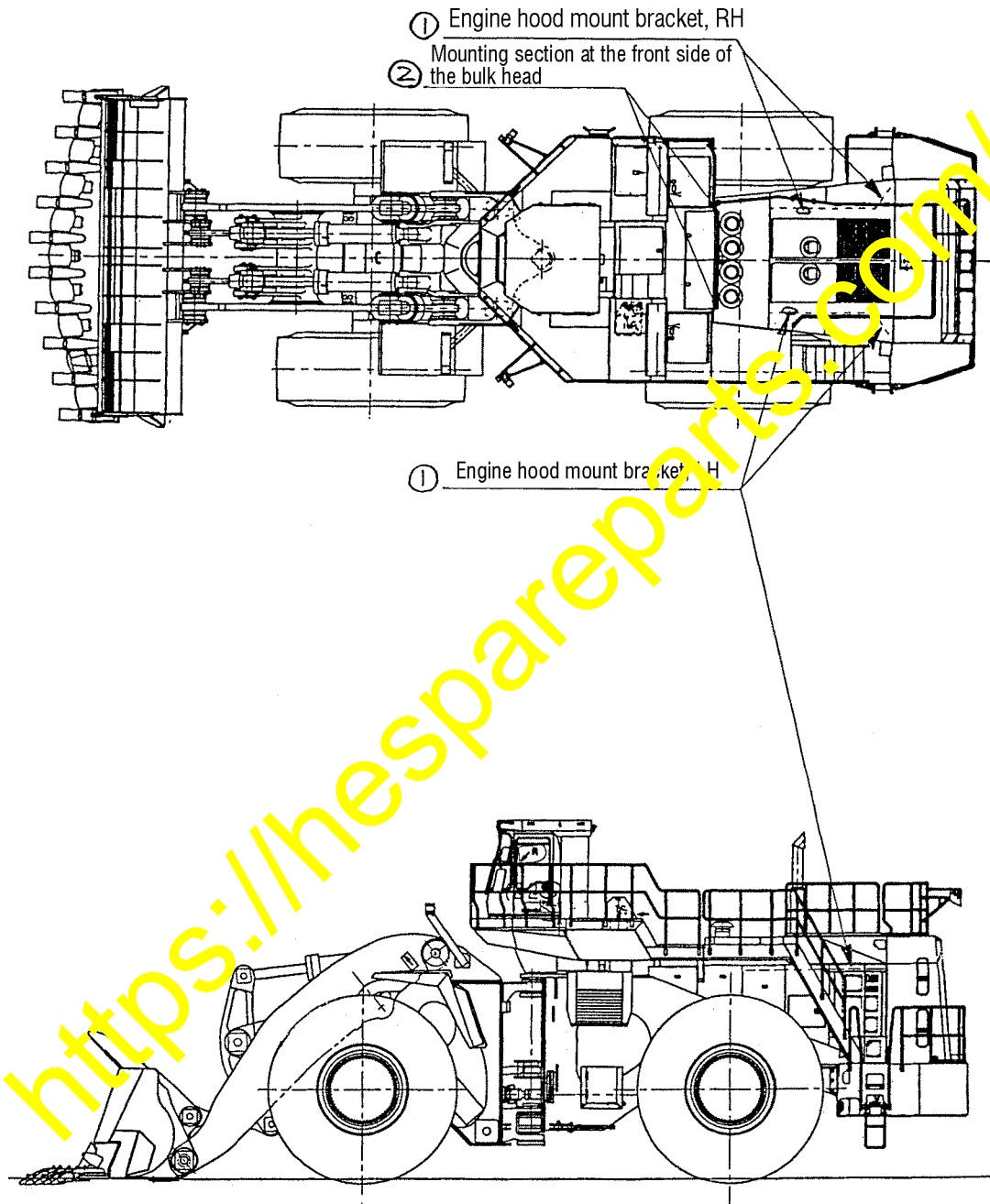
Part No.	Part Name	Purpose of part	Q'ty	Remarks
42C-54-11215 (42C-54-11214)	Bracket (Bracket)	} Reworked	1 (1)	} Part No. of the reinforced part ※1
42C-54-11225 (42C-54-11224)	Bracket (Bracket)		1 (1)	
-01	Plate	} Addition	2	} Reinforcement plate To be made locally ※1
-02	Plate		4	
01011-82015 (01011-82010)	Bolt (Bolt)	Replacement	6 (6)	Obtain through the supply route. ※1 The bolt to be used after the reinforcement work
42C-54-11974 (42C-54-11974)	Bulkhead (Bulkhead)	Reworked	1 (1)	The part number does not change. ※2
-03	Plate	Addition		Reinforcement plate To be made locally ※2

※1: ① Mounting section of the engine hood mount bracket

※2: ② Mounting section at the front side of the bulk head

3. Modification procedure

- (1) Make the modification in the sections indicated in the drawing below.
Be sure to paint after the rework.



(2) Dimensions of the reinforcement plate for the engine hood mount bracket and details of the repairing procedure (The LH side bracket and the RH side bracket are symmetrical.)

(New parts)

42C-54-11215 (LH)

42C-54-11225 (RH)

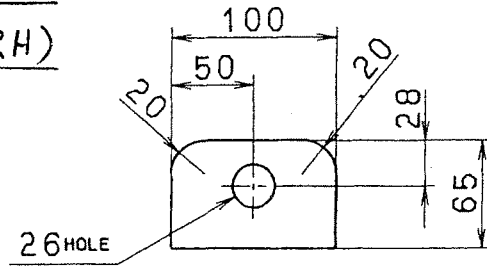


(Current parts)

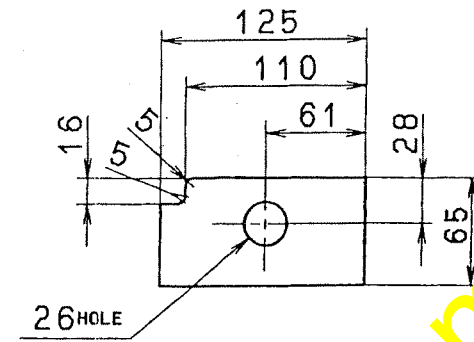
42C-54-11214

42C-54-11224

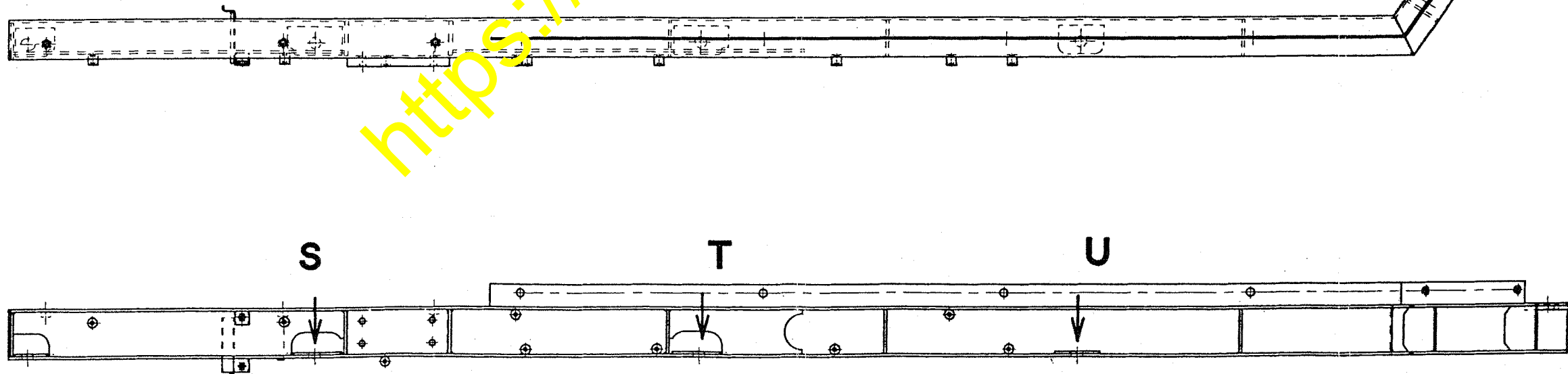
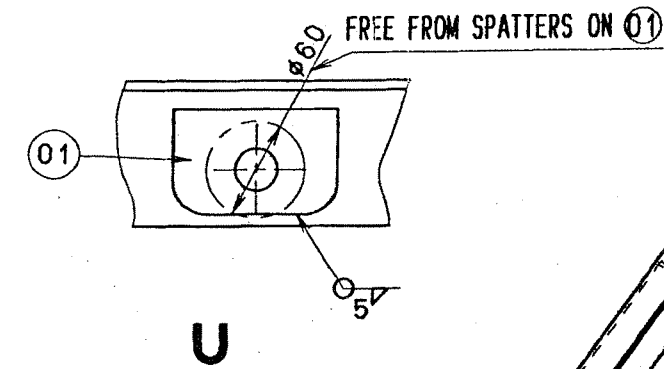
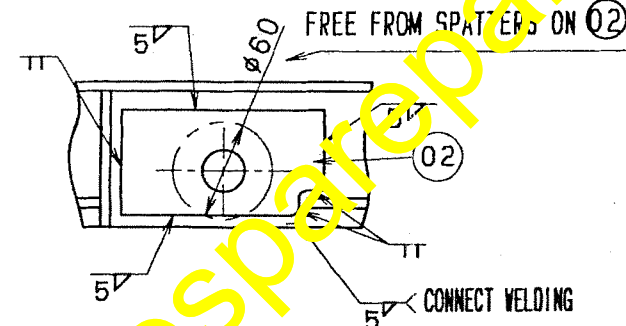
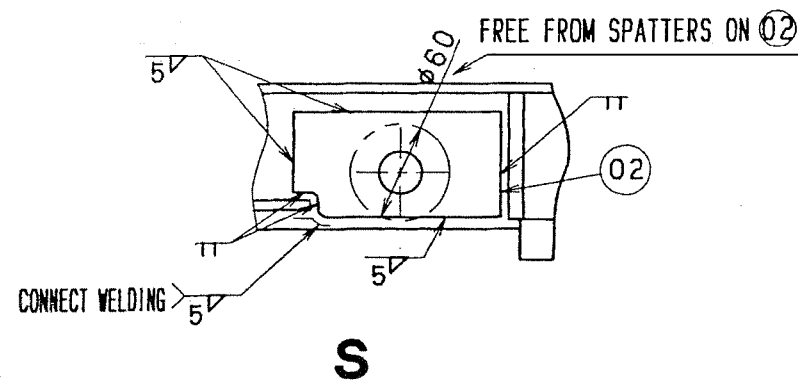
The part numbers of the bracket have been changed as above.



① Material : SS400P t 6
Qty : 2 pcs./unit



② Material : SS400P t 6
Qty : 4 pcs./unit



The bolts being used for the sections "S", "T" and "U" are to be changed from 01011-82010 to 01011-82015.

- (3) Dimensions of the reinforcement plate for the bulk head front side and details of the repairing procedure (The LH side and the RH side are symmetrical.)

Repair the cracks by welding and add the reinforcement plate ③.

