

PARTS & SERVICE NEWS

REF NO.	AT01223
DATE	Dec. 25, 2001

Page 1 of 6

SUBJECT: REPAIR OF POWER TRAIN GUARD MOUNTING PORTION IN REAR FRAME ON WA1200-3

PURPOSE: To introduce modification procedures for the power train guard mounting plate on the rear frame of the WA1200-3 wheel loaders

APPLICATION: WA1200-3 Wheel Loaders, Serial Nos. 50001 thru 50011

FAILURE CODE: 4778HA

DESCRIPTION:

1. Introduction

Cracks may occur starting from the welding end section of the power train guard mounting plate on the rear frame of the WA1200-3 wheel loaders extending toward the rear frame side.

It is possible to prevent occurrence of the above cracks by changing the shape of the mounting plate to ease the strain.

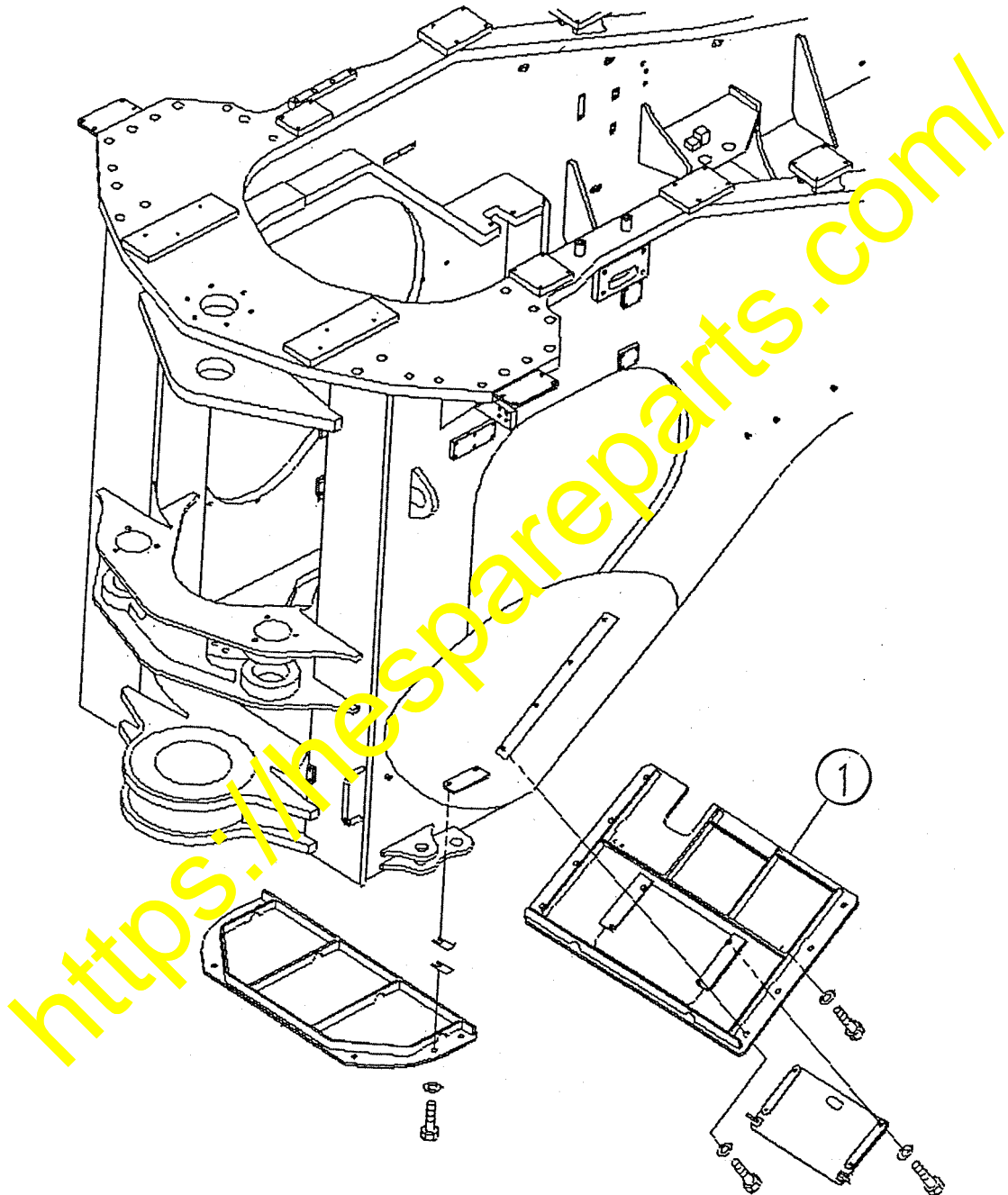
Therefore, implement the modification of the mounting plate following the procedures being outlined in this Service News.

2. List of parts

Part No.	Part Name	Purpose of part	Q'ty	Remarks
42C-971-1311 (42C-971-1310)	Frame E (Frame E)	} Reworked	1 (1)	
42C-971-1141 (42C-971-1140)	Plate (Plate)		1 (1)	
42C-971-1157 (42C-971-1156)	Plate (Plate)		1 (1)	

Additional working procedure

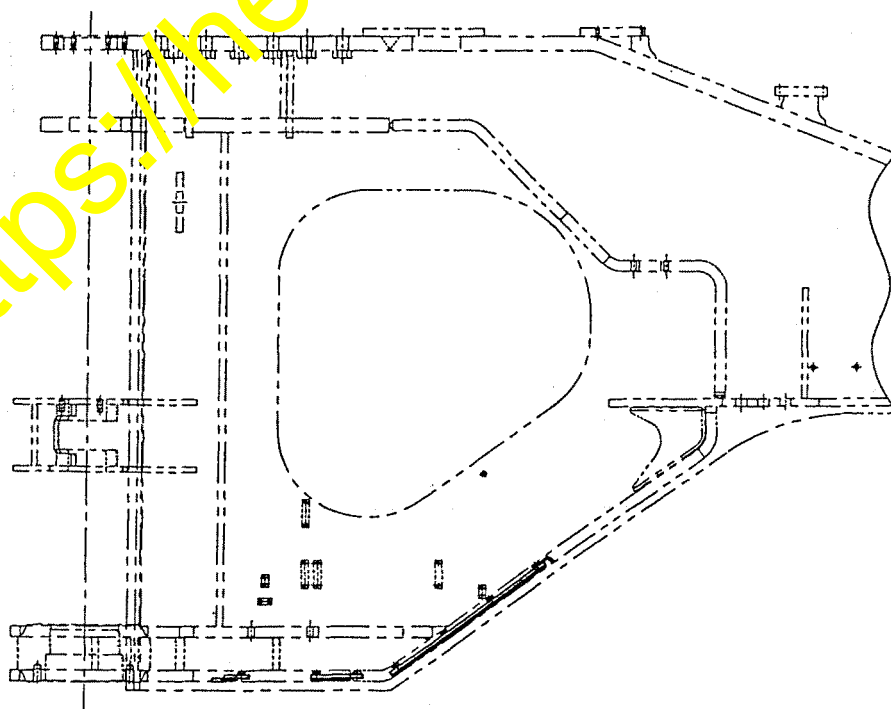
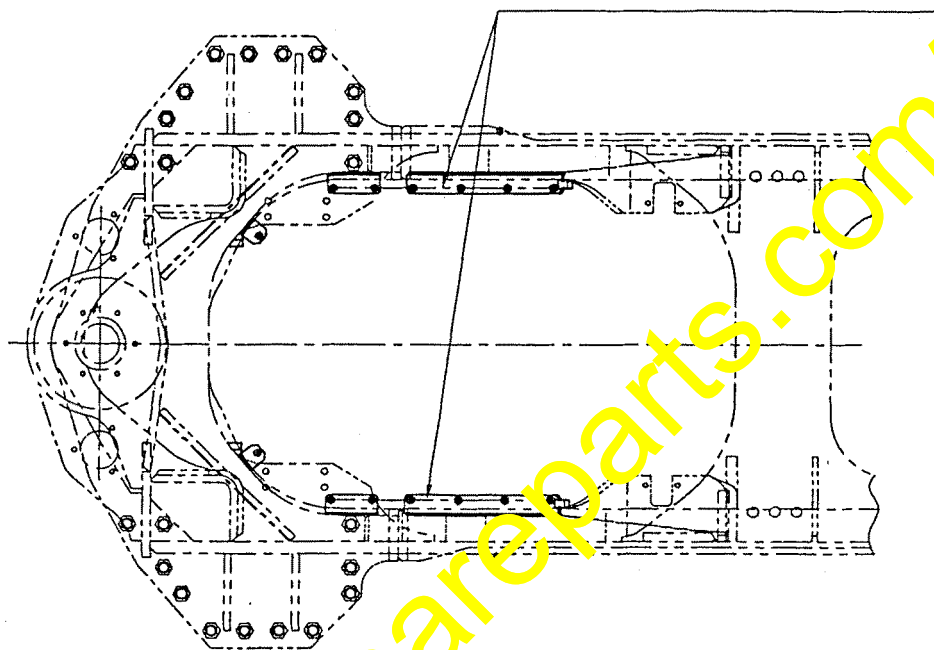
- (1) Before starting the additional work, remove the power train guard part ① as per the drawing below.



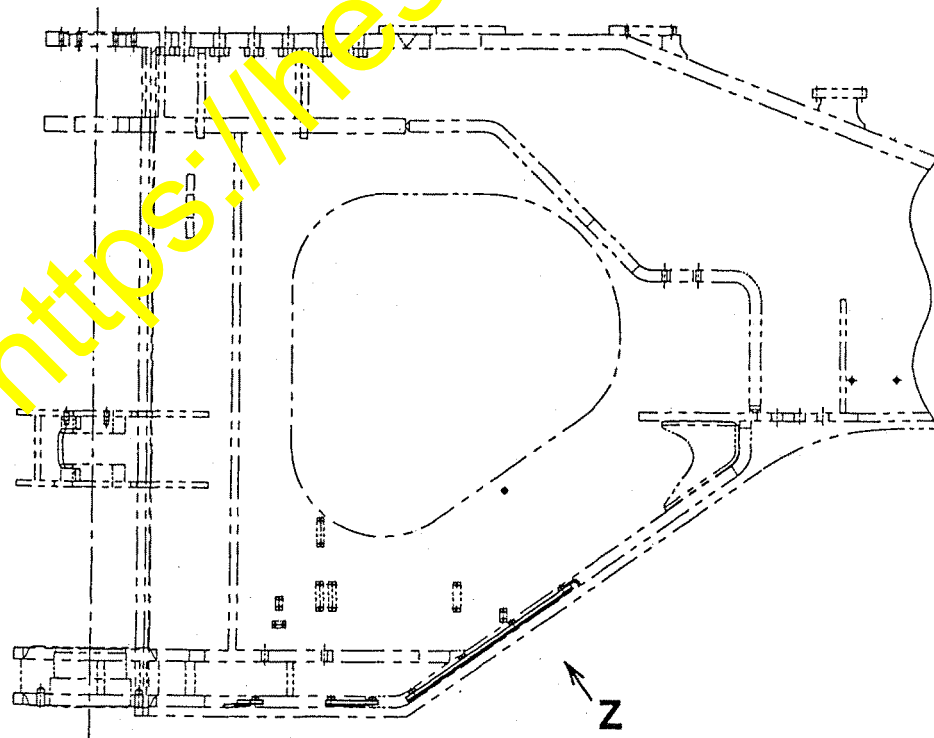
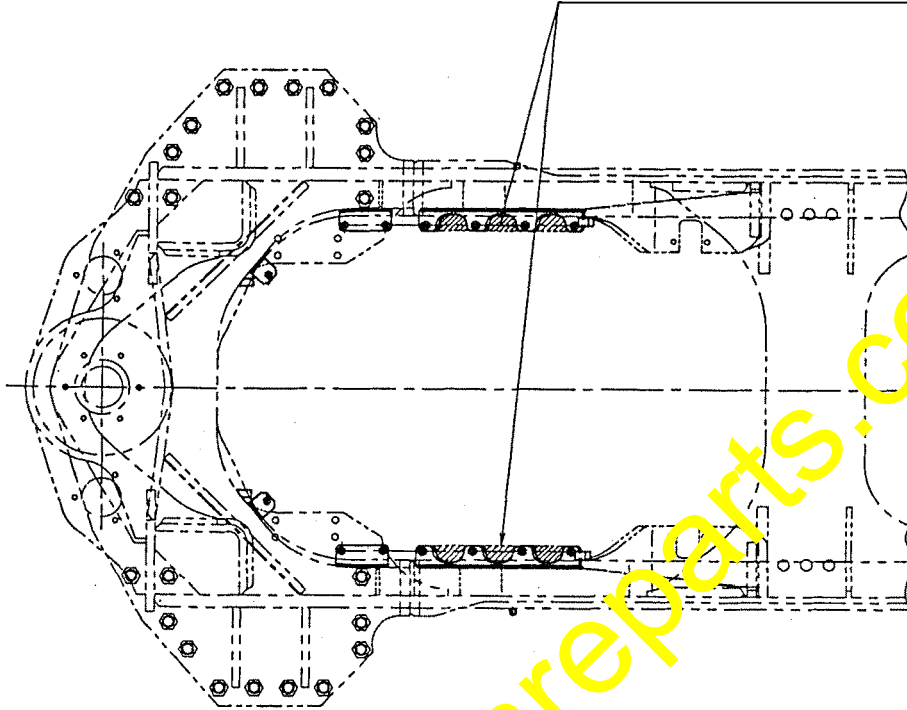
- (2) After that, carry out the additional work of the power train guard mounting plate as per the drawing below.

After finishing the additional work, paint the reworked section.

Change the shapes of these plates to the shape shown in the next page.

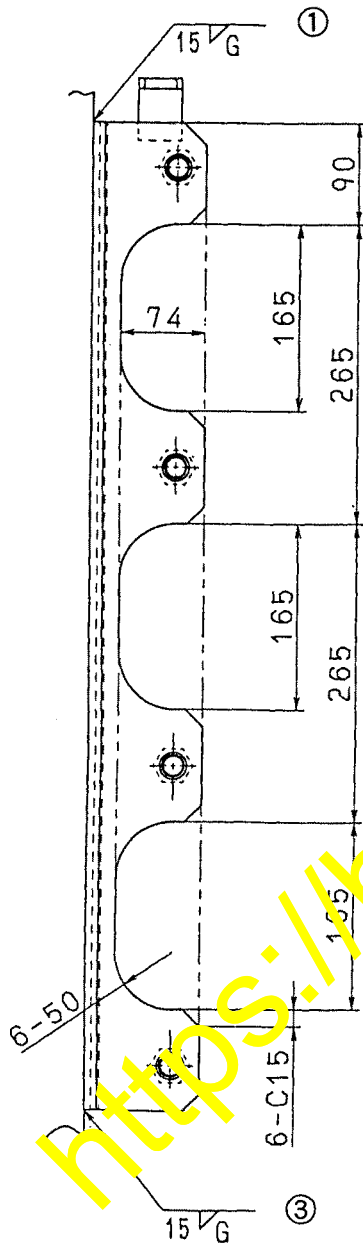


Remove the hatched sections of these plates.
Refer to the next page regarding the detailed dimensions.

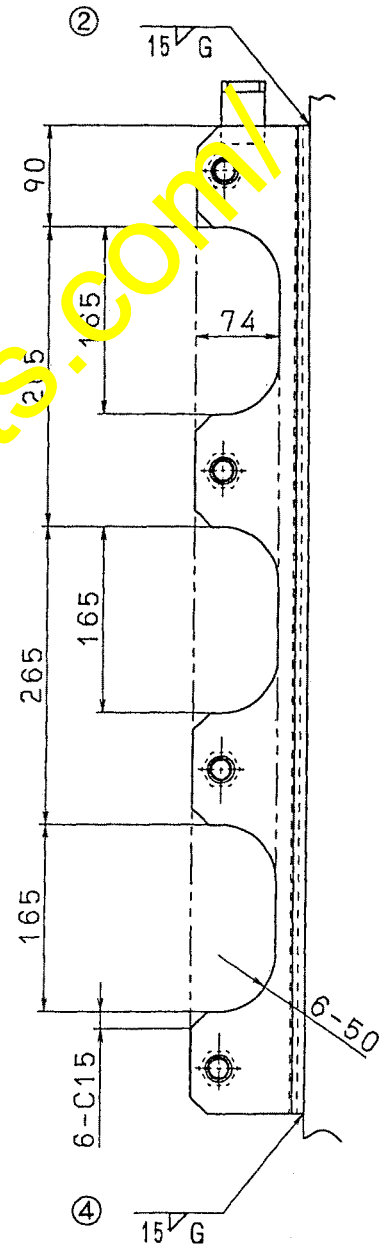


Detail dimensions for the additional work (View "Z")

Add the following welding as per the instructions given in the drawing below. (Welding as per ① thru ④)



Side plate, LH



Side plate, RH

Comparison before and after the modification
(The LH side and the RH side are symmetrical.)

