

PARTS & SERVICE NEWS

REF NO.	AT02029
DATE	Mar. 8, 2002

Page 1 of 3

SUBJECT: MODIFICATION PROCEDURE OF TORQUE CONVERTER PUMP HOSE FAILURE ON WA800/900-3.

PURPOSE: To introduce modification procedure to prevent occurrence of breakage failure of the outlet circuit hoses and tubes from the torque converter pump on WA800-3, WA900-3 and WD900 wheel loaders

APPLICATION: WA800-3 Wheel Loaders, Serial Nos. 50001 thru 50025
WA900-3 Wheel Loaders, Serial Nos. 50001 thru 50021
WD900-3 Wheel Loaders, Serial Nos. 50001 thru 50005

FAILURE CODE: 6BM1FF

DESCRIPTION:

1. Introduction

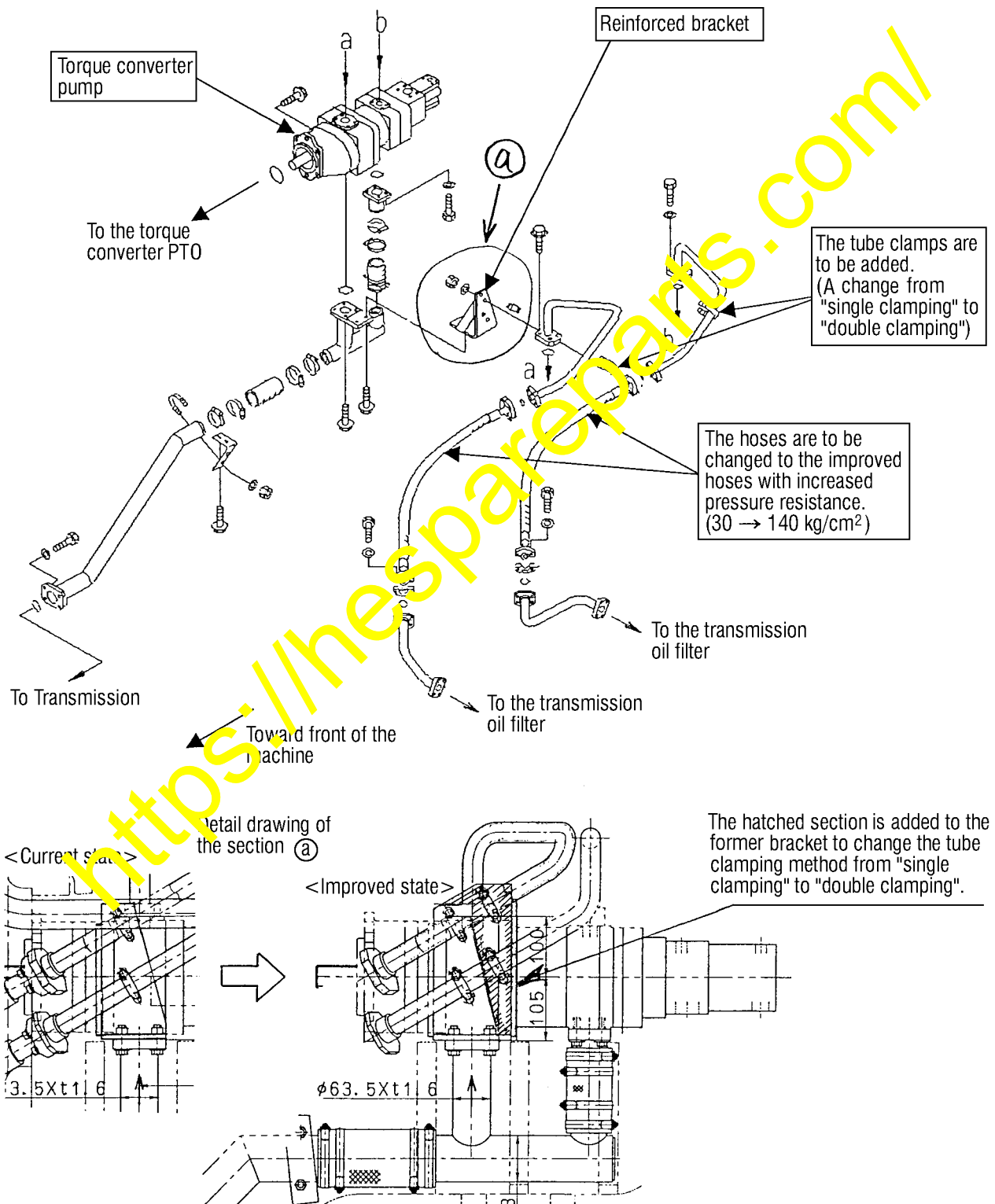
By pulsations, etc. of the discharge pressure from the torque converter pump on the WA800-3, WA900-3 and WD900 wheel loaders while the oil temperature is still low, breakage failure may occur with the outlet circuit tubes and hoses. Therefore, implement the modification following the procedures being outlined in this Service News to prevent occurrence of the above failure.

2. List of parts

Part No.	Part Name	Purpose of part	Q'ty	Remarks
427-16-21181 (427-16-21180)	Bracket (Bracket)	Replacement	1 (1)	Reinforced bracket
07283-33450	Clip	} Addition	2	} Additional clamps (For the double-clamping purpose)
07283-53444	Seat		2	
01597-01009	Clip		4	
01043-31002	Washer		4	
07119-01211 (07296-01211)	Hose (Hose)	} Replacement	2 (2)	Improved hose with increased pressure resistance (30 → 140 kg/cm ²)
07000-F3038	O-ring		4	

3. Contents of the modification

- 1) To prevent breakage failure of the tube:
 - The bracket is to be changed to the reinforced new bracket.
 - A tube clamp is to be added.
(A change from "single clamping" to "double clamping")
- 2) To prevent breakage failure of the hose:
 - The hoses are to be changed to the improved ones with increased pressure resistance. (30 → 140 kg/cm²)



4. Modification procedure

① Replacing the bracket

Remove the current tube fastening bracket to install the reinforced new bracket (427-16-21181) in replacement. (As for the mounting bolts, reuse the current bolts.)


② Adding the tube clamps.

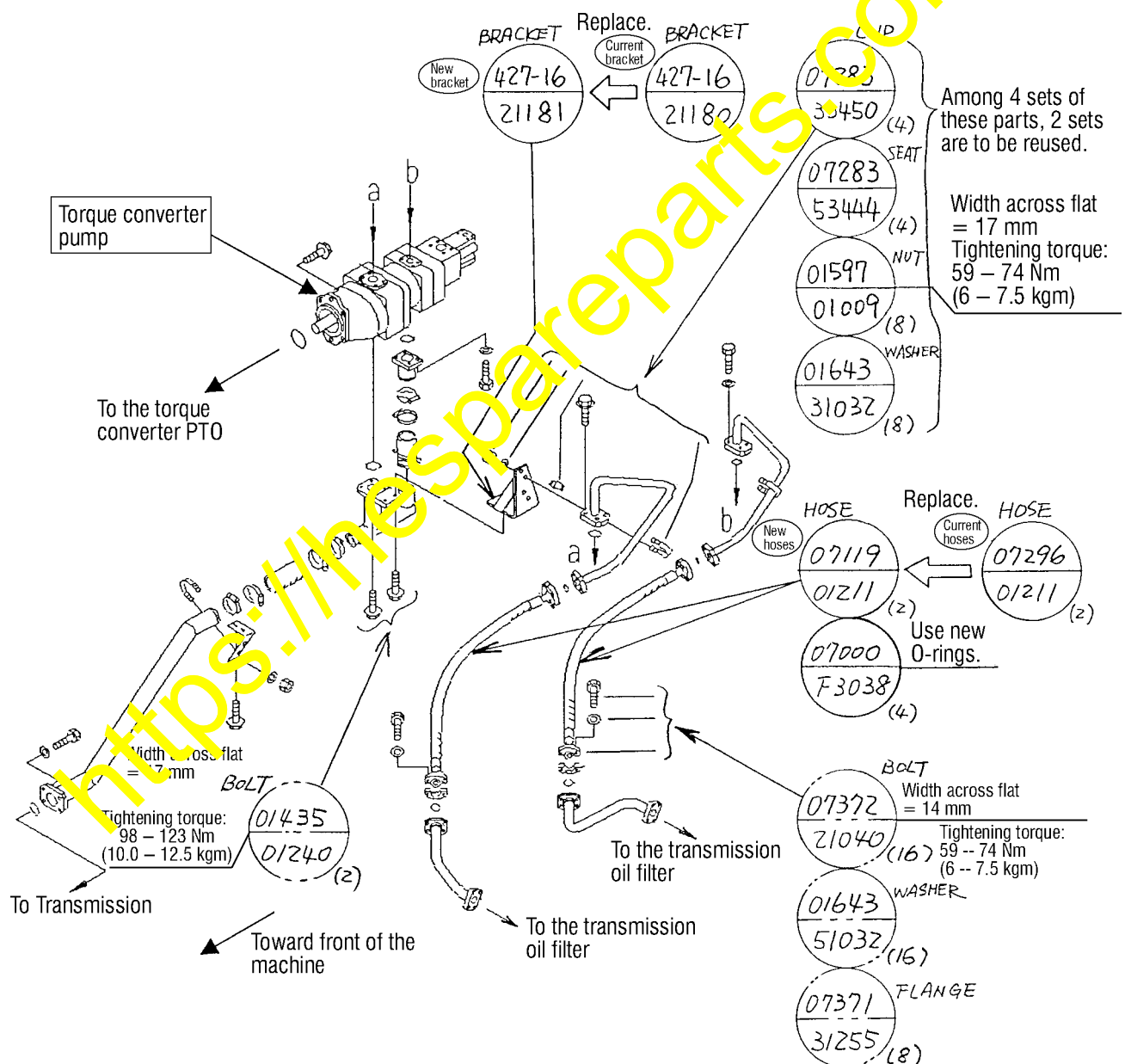
Change the current single clamping method to the double clamping method.

(There are mounting holes for the additional clamps on the reinforced new bracket.)

③ Changing the current hoses to the improved hoses (07119-01211 × 2 hoses).

(As for the mounting bolts, washers and split flanges, reuse the current parts.)

Since the parts with their part numbers in  marking are being reused, store them carefully not to lose them after their removal.)



After finishing the modification work, check the oil level and, also, make sure that oil leakage is not occurring.