

**PARTS & SERVICE  
NEWS**

REF NO.	AT02168A
DATE	Dec. 26, 2002

Page 1 of 6

**SUBJECT:** REPAIR PROCEDURE OF ENGINE CONTROLLER FOR SA(A)6D140E-3

**PURPOSE:** To introduce the repair procedure of engine controller for SA(A)6D140E-3.

**APPLICATION:** D155AX-5A  
HD325-6-EE  
HM400-1  
PC600-6  
PC750-6E  
WA500-3E

Only for models delivered to USA and KLC.  
(Refer to pages 5 and 6.)

**FAILURE CODE:** DA00Z9

**DESCRIPTION:**

## 1. Introduction

Based on the agreement with EPA, "Software rewriting for the engine controller" is executed. When rewriting it, follow the procedure described in this service news.

## 2. List of parts

Part No.	Part Name	Purpose of part	QTY	Remarks
7872-10-3127	Disk Assy	Rewriting	1	D155AX-5
7872-10-2325	Disk Assy	Rewriting	1	HD325-6
7872-10-2123	Disk Assy	Rewriting	1	HM350/400-1
7872-10-4126	Disk Assy	Rewriting	1	PC600/750-6
7872-10-5227	Disk Assy	Rewriting	1	WA500

### 3. Repair procedure

- 1) Applicable Models and Serial No's

Refer to pages 5 and 6.

- 2) Procedures for rewriting the software

Remove the controller from the vehicle body and rewrite by following "3. Procedure of Install a Calibration data software," in the page 2 of Service News "AT02066."

(Refer to page 3 of this service news.)

- 3) After rewriting, remove the part No. seal, which is stucked to the controller, and stick the new part No. seal, which is attached to the disk ass'y. Then, reinstall the controller to the vehicle body.

(As for the position where the part No. seal is stucked, refer to the page 3 of Service News "AT02066.")

(Refer to page 4 of this service news.)

- 4) After repairing, describe the following items on claim report and submit us.

- (1) Name vehicle model
- (2) Vehicle serial No.
- (3) Engine serial No.
- (4) Repair day
- (5) Distributor name
- (6) Name of repairer and ID number

### 4. Special items

- 1) Only the authorized engineer, who receives the work certification and obtains the ID No., can rewrite the software.
- 2) As for D155AX-5A, because the temperature of heat balance is increased by 3°C due to the software rewriting, when the vehicle is operated at the area, where the atmospheric temperature is higher than 47°C, change the side cover of part No. 17A-54-12181 to 17A-862-1840 of the cover with perforation.
- 3) Except the model of D155AX-5A, there are no changes due to the software rewriting.

## 5. Checking method after over writing.

## 1) Confirm indication pattern after over writing.

Model	Indication pattern after turning "on" the C/U power.	Eng controller parts number
D155AX-5	[88]- [78]-[72]-[10]-[A3]-[17] -[Q setting]-[--]-[error code]	7872-10-3106
PC600-6 PC750-6	[88]- [78]-[72]-[10]-[A4]-[16] -[Q setting]-[--]-[error code]	7872-10-4105
WA500-3	[88]- [78]-[72]-[10]-[A5]-[27] -[Q setting]-[--]-[error code]	7872-10-5205
HD325-6	[88]- [78]-[72]-[10]-[A2]-[35] -[Q setting]-[--]-[error code]	7872-10-2304
HM400-1	[88]- [78]-[72]-[10]-[A2]-[13] -[Q setting]-[--]-[error code]	7872-10-2103

Indications will be made by the built-in LED after turning "ON" the C/U power.

<Indication pattern: The following indication is an example for reference>

[88]-[78]-[5E]-[13]-[15]-[8A]-[--]-[MM]-[E ]-[EE]

①                      ②                      ③                      ④                      ⑤

① : For confirmation of the proper operation of the LED /  
② : Indications of the machine model versions

③ : Q-adjustment memory No. [L.H. side / R.H. side]  
(For example: [8A] → L.H. side Q-adjustment No. = 8 / R.H. side Q-adjustment No. = A)

④ : (Indication change) / ⑤ : Error code indications (Memory · Occurrence)

## 2. List of parts

## 1) Parts number of a Calibration data software and Current engine controller.

ENG Model	Applicable Model	Current parts	Introduced parts	
		Engine controller (1)	Calibration data software (2)	White controller (3)
125 series	WA470 / WA480	7872-20-5104	7872-20-5126	D
	HM300	7872-10-2201	7872-10-2221	A
	D65	7872-20-3301	7872-20-3321	D
140 series	HD325	7872-10-2304	7872-10-2325	A
	PC600 / 800	7872-10-4105	7872-10-4126	A
	PC1800 *	7872-20-4202	7872-20-4222	D
	HM400 / 350	7872-10-2103	7872-10-2123	A
	D275	7872-20-3201	7872-20-3221	D
	WA500	7872-10-5205	7872-10-5227	A
	D155AX-5 / D155EU	7872-10-3106	7872-10-3127	A
	DCA400	7872-10-6102	7872-10-6122	A

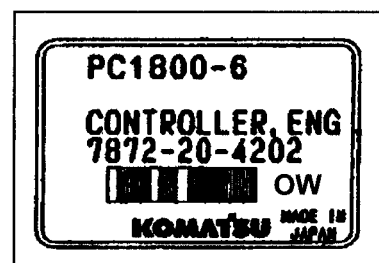
## \* Parts order

- Unauthorized Distributor: Can order (1) only. We can not supply (2) and (3).
- Authorized Distributor: Can order (1), (2) and (3)
  - (1) Current engine controller (Unnecessary writing Calibration Data)
  - (2) Calibration data software (Floppy disk and Name plate decal)
  - (3) White controller

\* PC1800-6 uses 2 pcs Engine controllers on 1 unit

## 2) Parts number of White controller.

- A: 7872-10-9000 (Refer to page 3 of 3.)
- D: 7872-20-9000 (Refer to page 3 of 3.)

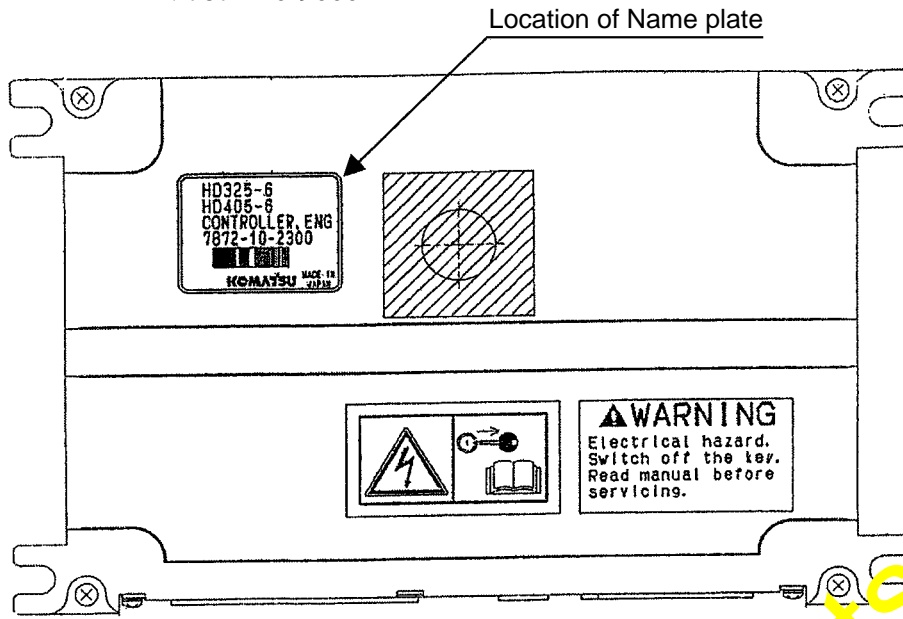


Example of Name plate

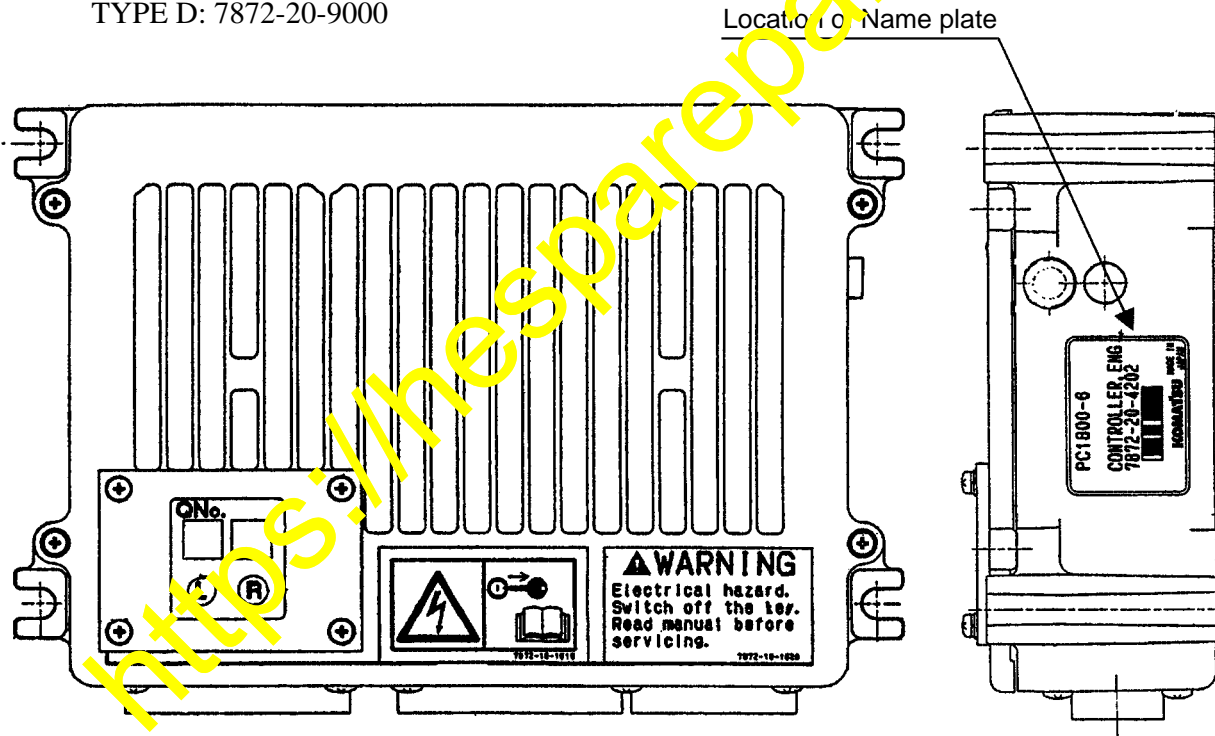
## 3. Procedure of Install a Calibration data software.

- 1) Regulation of practical use: (Customer Support Division)  
Refer to "Service Policy and Procedure Manual". REF No. SEKA2504.
- 2) Procedure of install: (Customer Support Division)  
Refer to "Parts and Service Operation TIPS". REF No. SEKN5020.

TYPE A: 7872-10-9000



TYPE D: 7872-20-9000



**List of applicable model and serial No.****1. WA500-3LK: 61 units (Only USA)**

No.	Serial No.	Eng. ser. No.	Destination
1	A71001	110046	USA (KAC)
2	A71003	110034	USA (binder)
3	A71004	110031	USA (bark river)
4	A71005	110035	USA (rish)
5	A71008	110032	USA (KAC)
6	A71009	110021	USA (tractor & Eq)
7	A71010	110033	USA (roland)
8	A71011	110020	USA (tractor & Eq)
9	A71012	110019	USA (general Eq)
10	A71013	110018	USA (general Eq)
11	A71014	110118	USA (general Eq)
12	A71015	110114	USA (Road machinery)
13	A71017	110122	USA (anderson)
14	A71018	110049	USA (R&C hazelton)
15	A71019	110048	USA (R&C hazelton)
16	A71020	110051	USA (continental)
17	A71021	110116	USA (rish)
18	A71022	110119	USA (brandeis)
19	A71023	110047	USA (furnival)
20	A71024	110117	USA (anderson)
21	A71025	110121	USA (Linder)
22	A71026	110113	USA (Linder)
23	A71028	110246	USA (kirby-smith)
24	A71029	110240	USA (tractor & Eq)
25	A71030	110175	USA (Linder)
26	A71032	110243	USA (H&E equipment)
27	A71034	110244	USA (H&E equipment)
28	A71035	110209	USA (H&E equipment)
29	A71036	110242	USA (edward)
30	A71037	110211	USA (brandeis)
31	A71038	110187	USA (pacific north)
32	A71039	110212	USA (tractor & Eq)
33	A71040	110213	USA (SMA)
34	A71041	110214	USA (edward)
35	A71042	110245	USA (edward)
36	A71043	110186	USA (power motive)
37	A71044	110241	USA (R&C hazelton)
38	A71045	110210	USA (binder)
39	A71046	110154	USA (R&C hazelton)
40	A71047	110153	USA (brandeis)
41	A71048	110155	USA (binder)
42	A71049	110184	USA (tractor & Eq)
43	A71050	110173	USA (mitchell)
44	A71051	110179	USA (anderson)
45	A71052	110177	USA (continental)

No.	Serial No.	Eng. ser. No.	Destination
46	A71053	110180	USA (anderson)
47	A71054	110156	USA (continental)
48	A71055	110181	USA (tractor & Eq)
49	A71056	110178	USA (continental)
50	A71057	110176	USA (columbus)
51	A71059	110182	USA (bark river)
52	A71060	110188	USA (brandeis)
53	A71061	110183	USA (edward)
54	A71062	110189	USA (tractor & Eq)
55	A71063	110185	USA (KEC)
56	A71067	110155	USA (road builder)
57	A71072	110509	USA (Linder)
58	A71101	110159	USA (columbus)
59	A71102	110017	USA (binder)
60	?	110030	USA
61		110239	USA

**2. L55AX-5A: 33 units (USA) + 5 units (KLC)**

No.	Serial No.	Eng. ser. No.	Destination
1	75001	110012	USA (continental)
2	75003	110041	USA (rish)
3	75004	110040	USA (mitchell)
4	75005	110055	USA (power equipment)
5	75016	110099	USA (anderson)
6	75018	110100	USA (H&E equipment)
7	75019	110128	USA (power equipment)
8	75022	110130	USA (binder)
9	75023	110131	USA (furnival)
10	75026	110197	USA (C.N wood)
11	75028	110159	USA (tractor & Eq)
12	75029	110160	USA (power motive)
13	75036	110218	USA (Linder)
14	75037	110217	USA (Linder)
15	75059	110330	USA (tractor & Eq)
16	75060	110331	USA (rish)
17	75061	110339	USA (brandeis)
18	75062	110340	USA (anderson)
19	75063	110341	USA (kirby-smith)
20	75069	110377	USA (berry)
21	75071	110378	USA (tractor & Eq)
22	75084	110140	USA (R&C hazelton)
23	75085	110474	USA (tractor & Eq)
24	75086	110473	USA (anderson)

No.	Serial No.	Eng. ser. No.	Destination
25	75088	110500	USA (bark river)
26	75089	110499	USA (mitchell)
27	75094	110514	USA (KAC)
28	75095	110511	USA (KAC)
29	75096	110510	USA (KAC)
30	75097	110529	USA (anderson)
31	75102	110563	USA (brandeis)
32	75103	110576	USA (pine bush)
33	?	110270	USA
34	75007	110056	KLC (puerto rico)
35	75006	110057	KLC (puerto rico)
36	75008	110058	KLC (puerto rico)
37	75009	110059	KLC (puerto rico)
38	75010	110068	KLC (puerto rico)

### 3. PC600-6: 10 units (Only USA)

No.	Serial No.	Eng. ser. No.	Destination
1	11001	110002	USA (federal equip)
2	11017	110083	USA (power motive)
3	11025	110136	USA (power motive)
4	11026	110137	USA (roland machinery)
5	11027	110138	USA (coneco)
6	11028	110145	USA (road building)
7	11031	110193	USA (binder)
8	11032	110195	USA (C.N wood)
9	11033	110196	USA (edward)
10	11058	110368	USA (WPI)

### 4. HD325-6: 12 units (USA) + 2 units (KLC)

No.	Serial No.	Eng. ser. No.	Destination
1	6002	110025	USA (tractor equip)
2	6007	110021	USA (WPI)
3	6008	110069	USA (power equip)
4	6015	110146	USA (furnival)
5	6017	110147	USA (furnival)
6	6018	110148	USA (tractor equip)
7	6019	110151	USA (tractor equip)
8	6037	110344	USA (KAC)
9	6038	110345	USA (mitchell)
10	6048	110450	USA (columbus)
11	6049	110451	USA
12	6050	110460	USA
13	6024	110204	KLC (puerto rico)
14	6026	110207	KLC (puerto rico)

### 5. HM400-1: 8 units (Only USA)

No.	Serial No.	Eng. ser. No.	Destination
1	1001	110014	USA (rish)
2	1002	110028	USA (columbus)
3	1003	110029	USA (rish)
4	1007	110292	USA (WPI)
5	1008	110293	USA (rish)
6	1010	110349	USA (WPI)
7	1014	110358	USA (WPI)
8	1016	110360	USA (kirby-smith)

### 6. PC750-6: 6 units (Only USA)

No.	Serial No.	Eng. ser. No.	Destination
1	11002	110429	USA (Linder)
2	11003	110510	USA (tractor Equip)
3	11004	110531	USA (tractor Equip)
4	11005	110520	USA (tractor Equip)
5	11006	110532	USA (tractor Equip)
6	11008	110542	USA (coneco)

### 7. ENG unit: 2 units (Only USA)

No.	Model	Eng. ser. No.	Destination
1	PC600-6	110094	riply stocked
2	PC750-6	110426	riply stocked

### 8. DCA400SSK

As for the applicable 11 units, the controller was already replaced. Therefore, the action is completed.