

**PARTS & SERVICE
NEWS**

REF NO.	AT03013
DATE	Feb. 19, 2003

Page 1 of 3

SUBJECT: REPAIR PROCEDURE OF JOYSTICK SWITCH ON WA700-3, WA800-3, WA900-3, WA1200-3

PURPOSE: To introduce modification procedure to repair malfunctioning of the F/R switch on the joystick (AJSS type) lever knob on WA1200-3, WA900-3, WA800-3 and WA700-3 wheel loaders

APPLICATION: WA1200-3 Wheel Loaders, Serial Nos. up to 50012
 WA900-3 Wheel Loaders, Serial Nos. up to 50024
 WA800-3 Wheel Loaders, Serial Nos. up to 50027
 WA700-3 Wheel Loaders, Serial Nos. up to 50055

FAILURE CODE: DF10MY

DESCRIPTION:

1. Introduction

- 1) The detent section of the F/R seesaw switch on the AJSS type joystick lever knob on the WA1200-3, WA900-3, WA800-3 and WA700-3 wheel loaders may wear out to cause malfunctioning of returning to the "N" (neutral) position not staying at the "R" (or "F") position even after the switch is turned to the "R" (or "F") position.

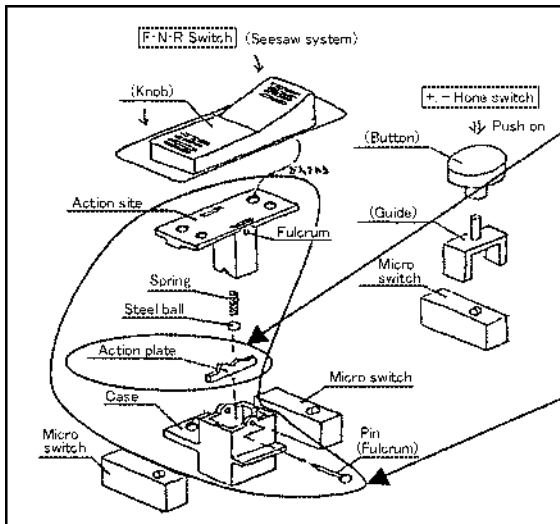
As we have newly registered the internal parts to repair the above malfunctioning as spare parts, make the modification being introduced in this Service News by replacing these parts when the aforementioned malfunctioning occurs.

- 2) The relevant parts such as the upper operating surface covering rubber cap, etc., which have been registered as well, are introduced in this Service News at the same time.

2. List of parts

Part No.	Part Name	Purpose of part	Q'ty	Remarks
42C-S33-1111 (42C-S33-1110)	Knob (Knob)	Replacement	1 (1)	Newly registered spare parts number
42C-S33-1160	Case, detent	Addition	1	
42C-S33-1150	Cap		1	
42C-S33-1170	Guide		3	
42C-S33-1180	O-ring		1	

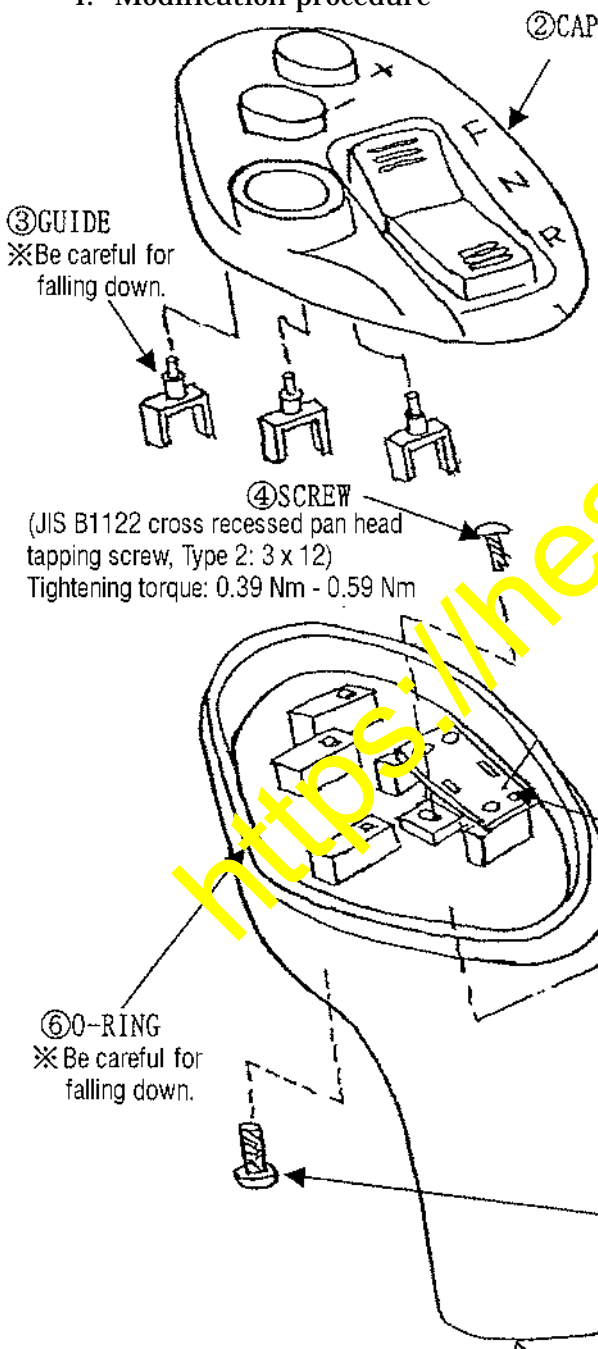
3. Details of the modification



The surface hardness of the detent supporting action plate has been increased to improve the wear resistance.

↓
Replacing new part:
CASE, DETENT (42C-S33-1160)

4. Modification procedure



Replacement procedure

- 1: Park the vehicle on a flat place, apply the parking brake, turn off the starting switch and insert chocks underneath the tires.
- 2: Remove the screws ① (2 pcs.) and the cap ②.
At this time, leave the guide ③ (3 pcs.) in the installed condition. In they are separated, insert the separated guide back into the cap ②.
- 3: Remove the screw ④ (1 pce.) and replace the current ⑤ CASE, DETENT with the newly registered CASE, DETENT (42C-S33-1160).
Tightening torque for the screw ④:
0.39 Nm - 0.59 Nm (0.04 kg·m - 0.06 kg·m)
- 4: Install the cap ② with the screws ①.
The O-ring ⑥ must be correctly positioned in the groove and not be dislocated or fall down.
Install the guides ③ (3 pcs.) in a position so that they step over the micro switches, respectively.
Tightening torque for the screw ①:
0.78 Nm - 0.98 Nm (0.08 kg·m - 0.1 kg·m)
- 5: After finishing the replacement work
Check if the F/R seesaw switch can be held at each position of "F", "N" and "R". Also, check if the pushbutton switch can be depressed properly.

⑤ CASE, DETENT (42C-S33-1160)
Replace with the newly registered CASE, DETENT.

① SCREW
(JIS B1122 cross recessed pan head tapping screw, Type 2: 4 x 16)
Tightening torque: 0.78 Nm - 0.98 Nm

The Production No. is stamped here.
(2405-, Already modified parts)

5. Other spare parts newly registered

