

PARTS & SERVICE NEWS

REF NO.	AT03109
DATE	Jun. 24, 2003

Page 1 of 6

SUBJECT: REPAIR PROCEDURE OF FUEL PIPE IN FUEL TANK ON WA1200-3

PURPOSE: To introduce modification procedure to repair the fuel suction tube positioned inside the fuel tank on WA1200-3 wheel loaders

APPLICATION: WA1200-3 Wheel Loaders, Serial Nos. 50001 thru 50012

FAILURE CODE: 0426HA

DESCRIPTION:

1. Introduction

There is a possibility of occurrence of cracks in the welded section of the fuel suction tube positioned inside the fuel tank on the WA1200-3 wheel loaders owing to insufficient strength, leading to fuel suction failure by that it may become impossible to start the engine.

To repair the above failure, replace the fuel suction tube following the modification procedure being outlined in this Service News.

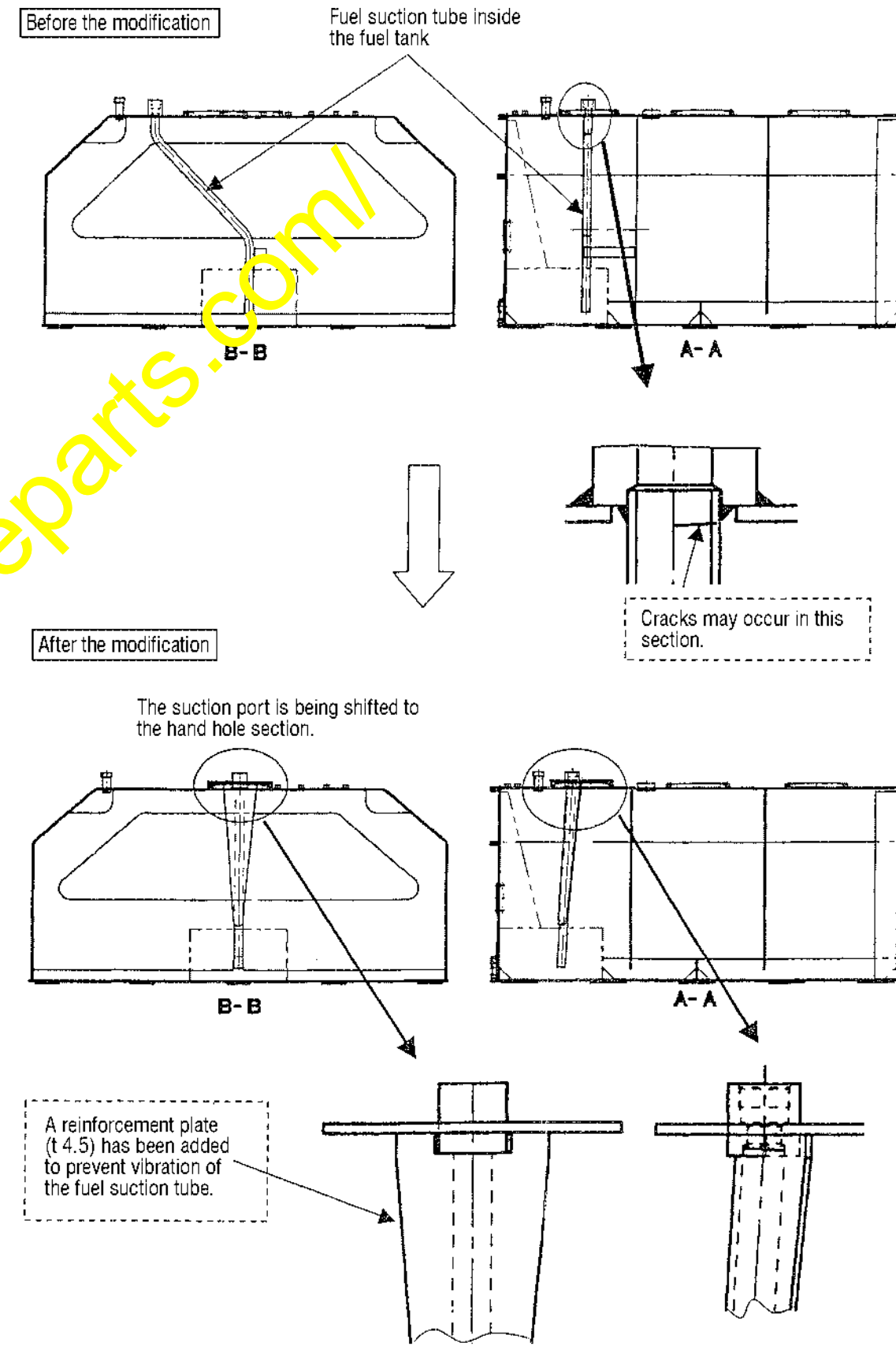
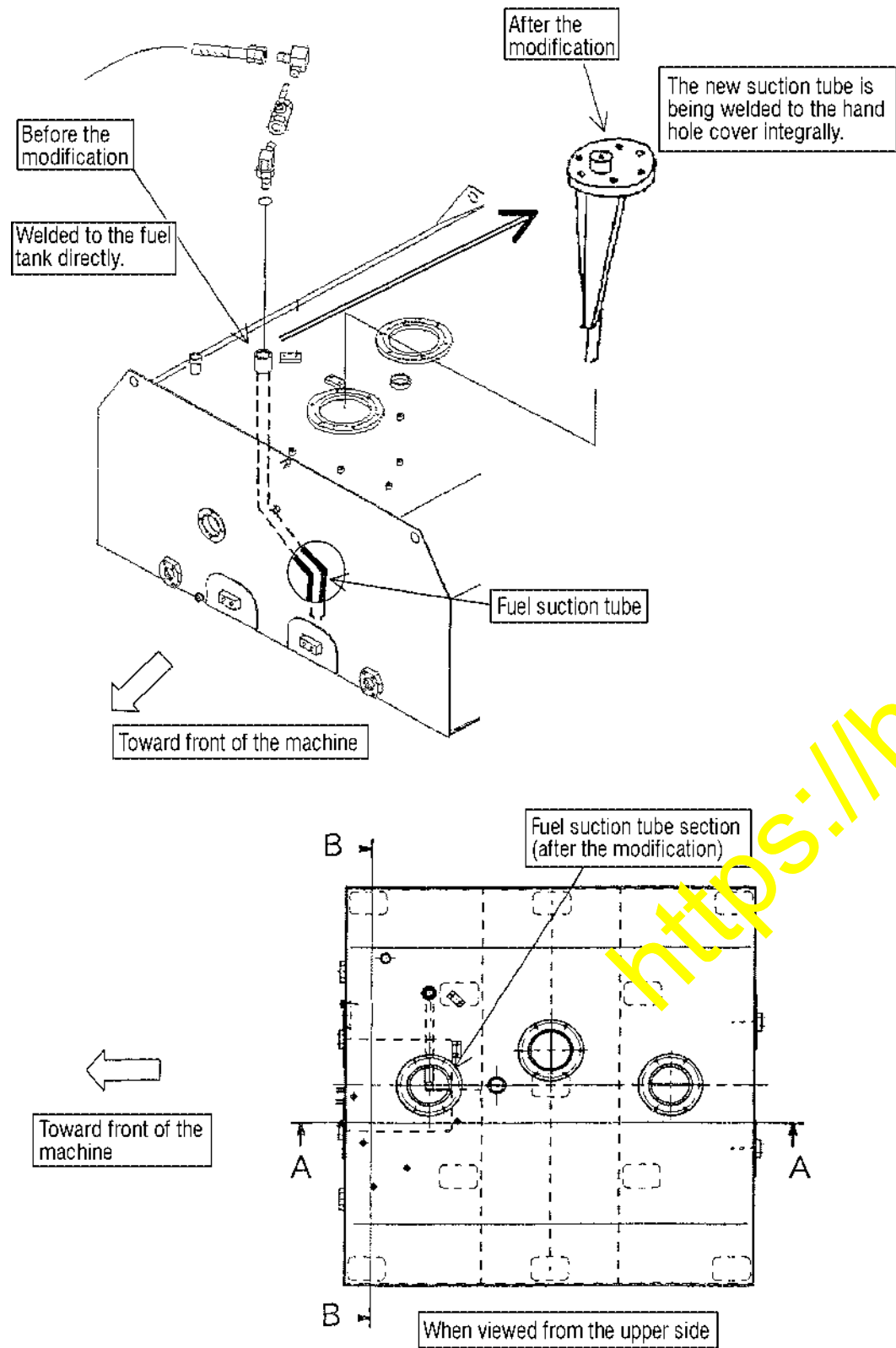
2. List of parts

Part No.	Part Name	Purpose of part	Q'ty	Remarks
42C-04-11420 (428-04-11120)	Tube (Cover)	Replacement	1 (1)	
42C-04-11390 (42C-04-13551)	Bracket (Bracket)		1 (1)	
01010-81230 (01435-01220)	Bolt (Bolt)		2 (2)	
01643-31230	Washer	Addition	2	
07102-21430 (07102-21420)	Hose (Hose)	Replacement	1 (1)	
07040-14220	Plug	Addition	1	
42C-04-13880 (42C-04-13570)	Union (Elbow)	Replacement	1 (1)	

Part No.	Part Name	Purpose of part	Q'ty	Remarks
42C-04-13590 (42C-04-13590)	Elbow (Elbow)		1 (1)	} Reuse the removed parts.
42C-01-12690 (42C-01-12690)	O-ring (O-ring)		1 (1)	
07283-36155 (07283-36155)	Clip (Clip)		1 (1)	
01597-01009 (01597-01009)	Nut (Nut)		2 (2)	
01643-31032 (01643-31032)	Washer (Washer)		2 (2)	
42C-04-13542 (42C-04-13542)	Cable (Cable)		1 (1)	
04256-40615 (04256-40615)	Joint (Joint)		1 (1)	
01594-00606 (01594-00606)	Nut (Nut)		1 (1)	
01643-30623 (01643-30623)	Washer (Washer)		1 (1)	
(42C-04-13561)	(Bracket)	} Not used	(1)	
(01435-01220)	(Bolt)		(2)	
(415-01-11120)	(Bracket)		(1)	
04434-51210 (04434-51210)	Clip (Clip)		1 (2)	
01435-01016 (01435-01016)	Bolt (Bolt)		1 (3)	
(01643-31032)	(Washer)	} Not used	(1)	} Remove these parts.
(01580-01008)	(Nut)		(1)	
07000-F3048	O-ring	Addition	2	Parts which will be damaged while the brake cooler is being removed.

3. Details of the modification

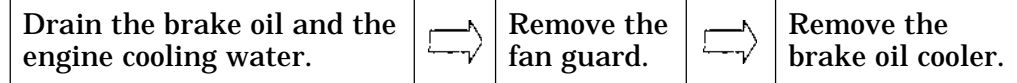
The fuel suction tube positioned inside the fuel tank is to be changed from the current type which is being welded to the fuel tank directly to a new type which is to be welded to the hand hole cover thus making it possible to change the fuel suction tube. The welded section to the hand hole cover is also being reinforced.



4. Modification procedure

(1) Preparations before starting the replacement work for the fuel suction tube

Since the new fuel suction tube will come underneath the fan guard and the brake oil cooler, it becomes necessary to remove the fan guard and the brake oil cooler before starting the replacement work.



- Draining capacity: Engine cooling water About 540 liters
 Brake cooling oil About 200 liters
 Prepare storage containers.

