

# PARTS & SERVICE NEWS

REF NO.	AT03125
DATE	Jul. 10, 2003

(C)

Page 1 of 4

**SUBJECT:** REPAIR PROCEDURE OF REAR COVER BRACKET IN CAB ON HD465-7, HD605-7

**PURPOSE:** To introduce modification procedure to repair the rear cover mounting bracket positioned inside the operator's cab on HD465-7 and HD605-7 dump trucks

**APPLICATION:** HD465-7 Dump Trucks, Serial Nos. 7001 thru 7143  
HD605-7 Dump Trucks, Serial Nos. 7001 thru 7053

**FAILURE CODE:** 54M4HA

**DESCRIPTION:**

1. Introduction

With the HD465-7 and HD605-7 dump trucks, depending on the operating conditions, the rear cover mounting bracket positioned inside the operator's cab may break.

This Service News will therefore introduce the modification procedure to repair and reinforce the bracket.

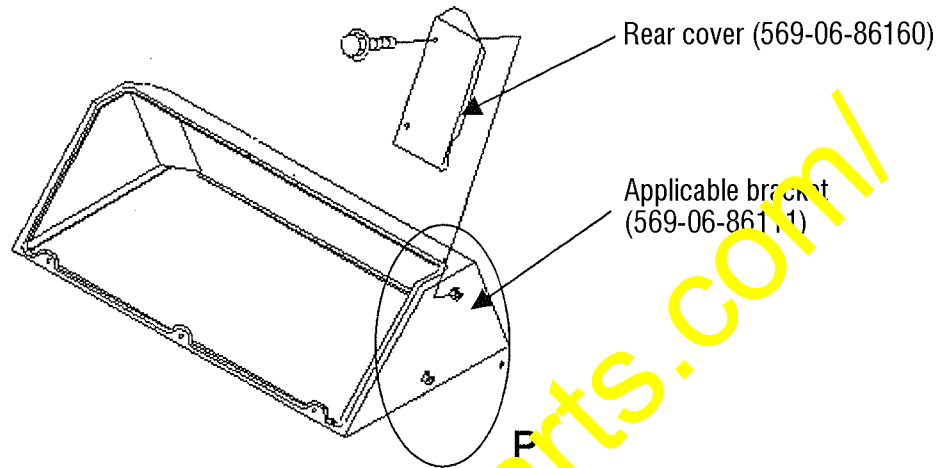
2. List of parts

Part No.	Part Name	Qty	Remarks
569-06-86510	Bracket	1	For additional working

3. Details of the modification

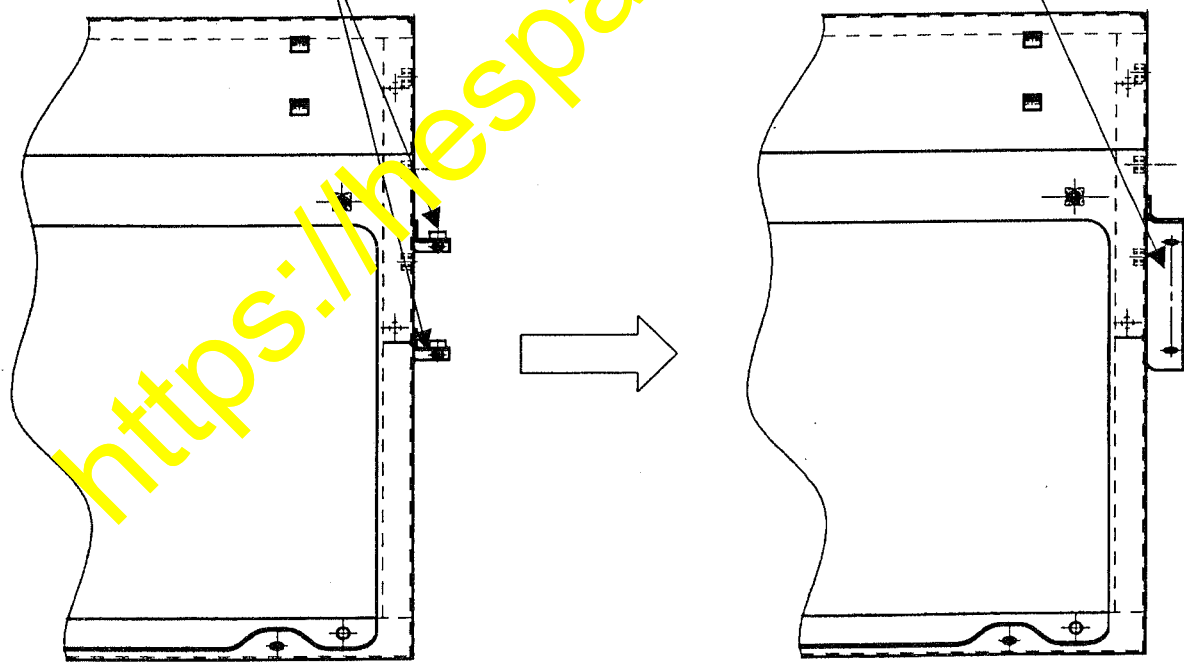
The rear cover mounting bracket positioned inside the operator's cab is to be modified as indicated below to reinforce its structure.

- ① L-shaped plates in 2 pieces → L-shaped plate of a solid structure
- ② Sheet thickness: t 2.3 → t 3.2



• L-shaped plates in 2 pieces  
• t 2.3

• L-shaped plate of a solid structure  
• t 3.2



Current state

After the modification

Details drawing of the section "P"

#### 4. Modification procedure

##### 4-1. Preparation of the necessary parts

Prepare the bracket as per Fig. 1 below. (The bracket may also be made out referring to the drawing below.)

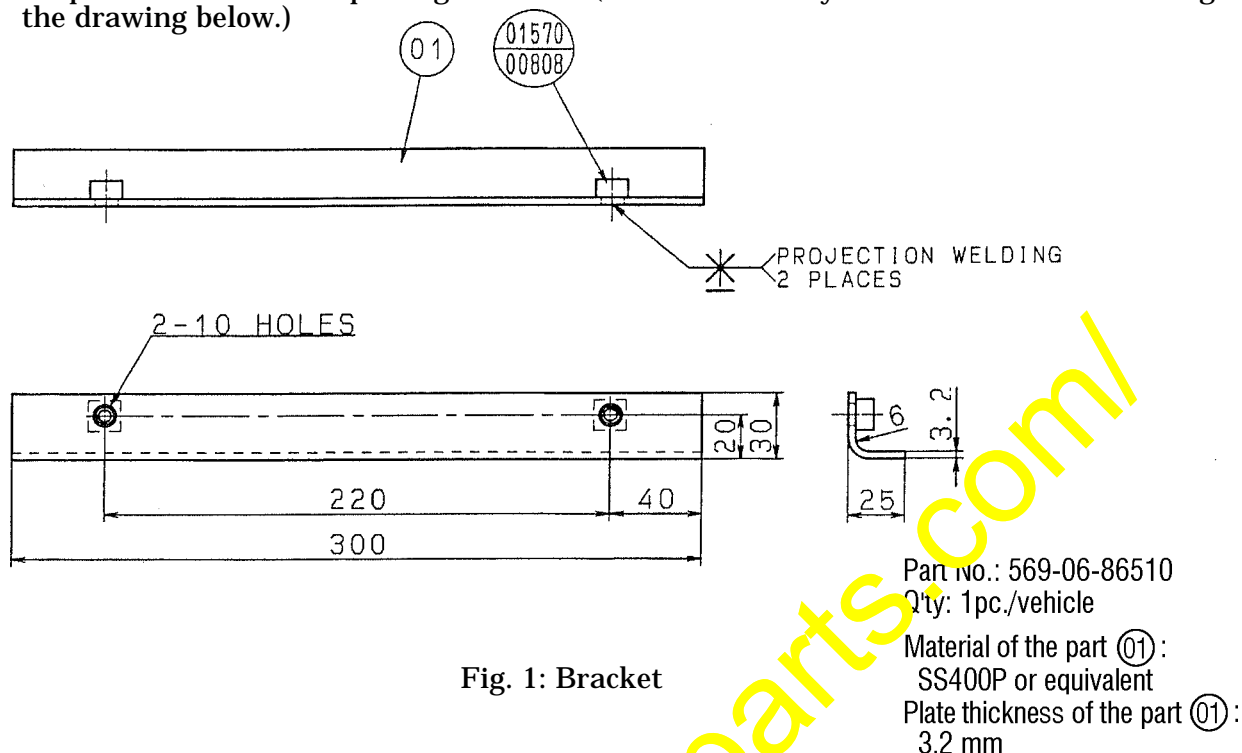


Fig. 1: Bracket

##### 4-2. Preparations before starting the modification work

- 1) Park the vehicle on a flat place and apply the parking brake.
- 2) Stop the engine.
- 3) Apply chocks to each tire.
- 4) Before starting the modification work, carefully read the Operation and Maintenance Manual.

##### 4-3. Removing the parts

Remove the parts marked ① and ※ (Refer to Fig. 2.)

Since the parts marked ① are being reused at the reassembly of the modified parts, store them carefully.

The parts marked ※ are to be reused after finishing the additional working.

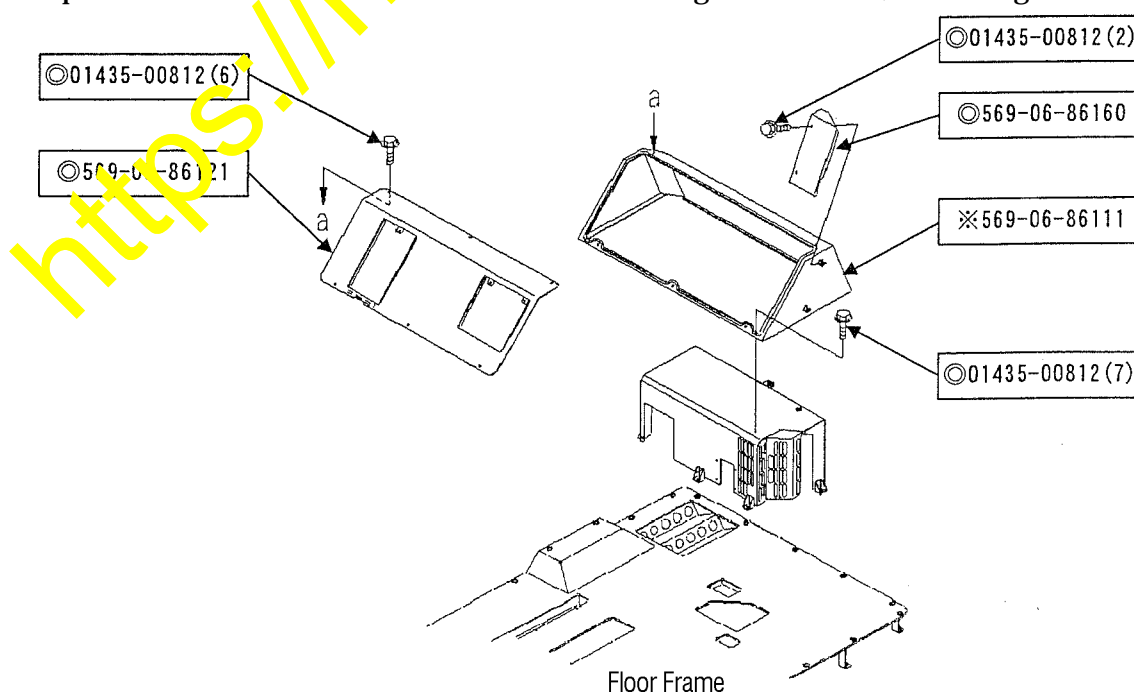


Fig. 2: Removal drawing

4-4. Additional working for the bracket

Make additional working to the bracket (569-06-86111) which has been removed as per the instructions given in Section 4-3, following the instructions given in Fig. 3 and Fig. 4 indicated below.

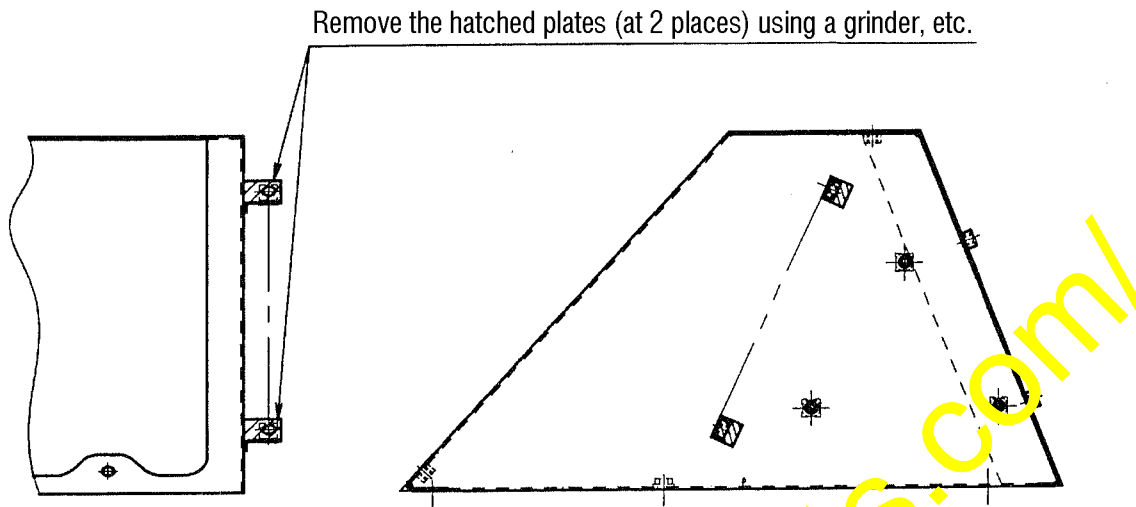


Fig. 3: Additional working drawing 1

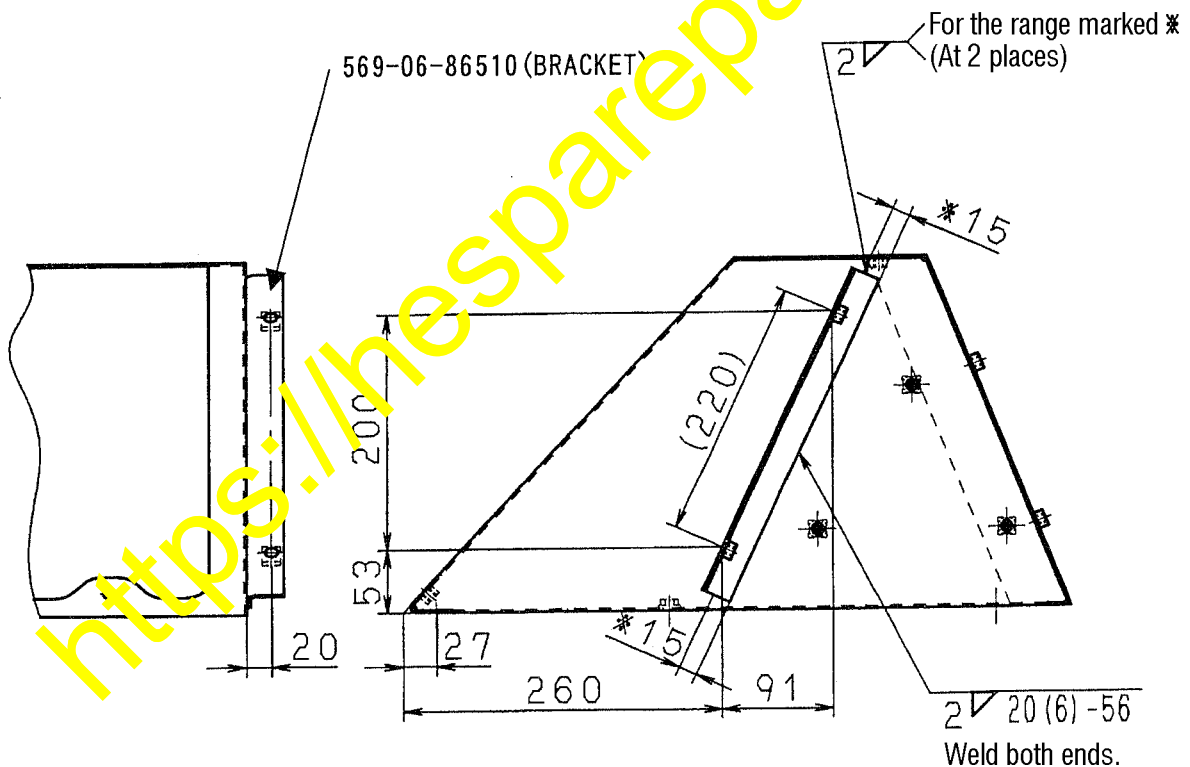


Fig. 4: Additional working drawing 2

After completing the welding work, paint the welded section with the Cab Gray color paint.

4-5. Installation procedure of the improved parts

Re-install the cover, bracket, etc. which have been removed for the modification work back to the vehicle body in the reversed procedure to the removal procedure of the above Fig. 2.