

**PARTS & SERVICE
NEWS**

REF NO.	AT03184
DATE	Sept. 19, 2003
(C) Page 1 of 4	

SUBJECT: INTRODUCTION OF DUST SEAL FOR FRONT SEAL ON 102 ENGINES

PURPOSE: To introduce the dust seal for front seal on 102 Engines

APPLICATION: All models on which ϕ 102 Engines are mounted

FAILURE CODE: A240AA

DESCRIPTION:**1. Introduction**

In order to prevent the dust from entering into the front seal lip surface (quality improvement), the dust seal is added. Therefore, it is introduced by this service news.

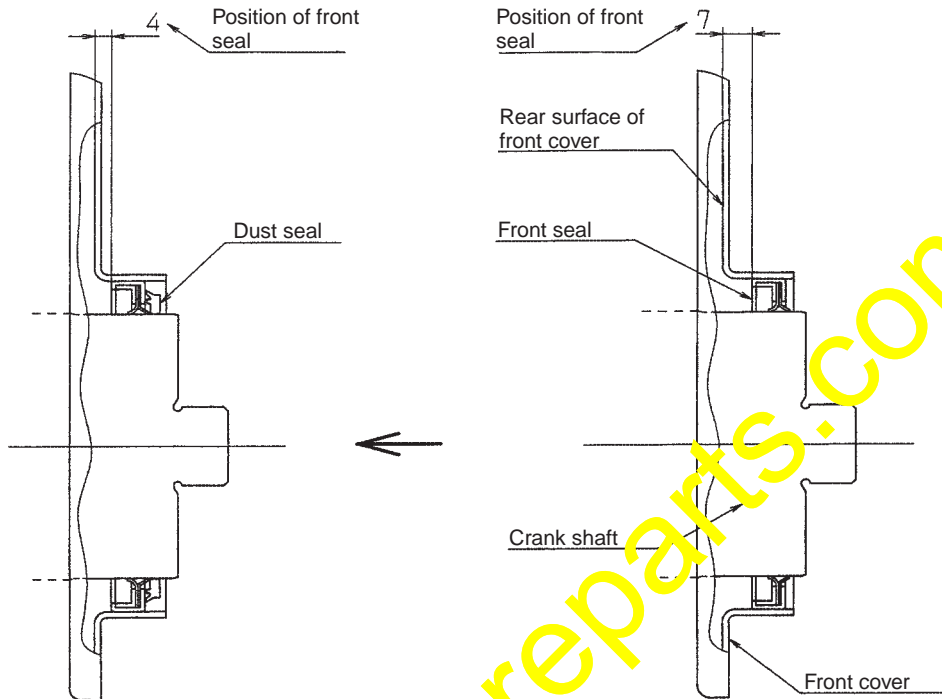
(In addition, because the introduced dust seal has been already included in the front seal kit for the spare parts, use this part.)

2. List of parts

Part No.	Part Name	Purpose of part	Q'ty	Remarks
6731-21-4210 (6731-21-4210)	Kit, front seal (Kit, front seal)	Replacement	1 (1)	Kit part No. for the spare parts (Same as the current parts) Same as the already speci- fied spare parts. Therefore, the old parts treatment is not required.
• 6732-21-3511 (6732-21-3511)	Seal, front (Seal, front)		1 (1)	
• 6731-81-8710 (6731-81-8710)	Shield, dust (Shield, dust)	1 (1)		
• 6736-01-3110 (6736-01-3110)	Tool, installation (Tool, installation)	1 (1)		
6736-21-3450 (6736-21-3450)	Gasket, cover (Gasket, cover)	Replacement	1 (1)	

3. Contents of the modification

In order to avoid the wear and the oil leakage from the lip surface by the dust entry, the dust seal is added.



Improved (The dust seal is added.)

Current (The dust seal does not exist.)

4. Repair procedures

- (1) In order to add the dust seal, the installation position of front seal is changed.
(Above fig. 4 mm ← 7 mm)
- (2) The jig for striking the seal is changed.
And the jig for striking the dust seal is additionally required.
(The drawing of jig is attached.)
- (3) As for the installation procedures for the front seal and the dust seal, refer to the following pages.

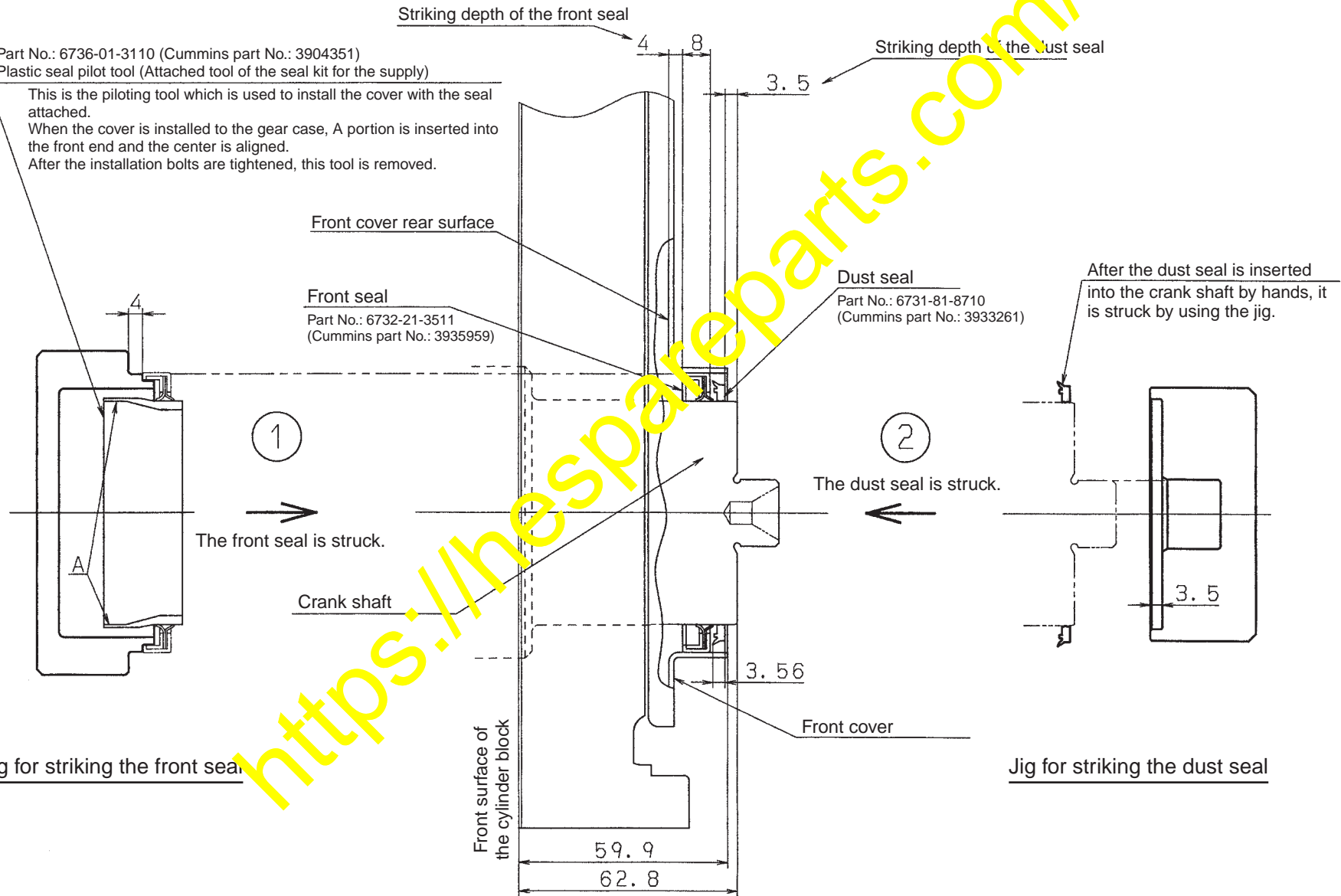
The disassembling and the assembling procedures for the other parts are same as the ones in the current Shop Manual.

In addition, the dust seal is included in the component parts of the front seal kit part No. 6731-21-4220 for the supply.

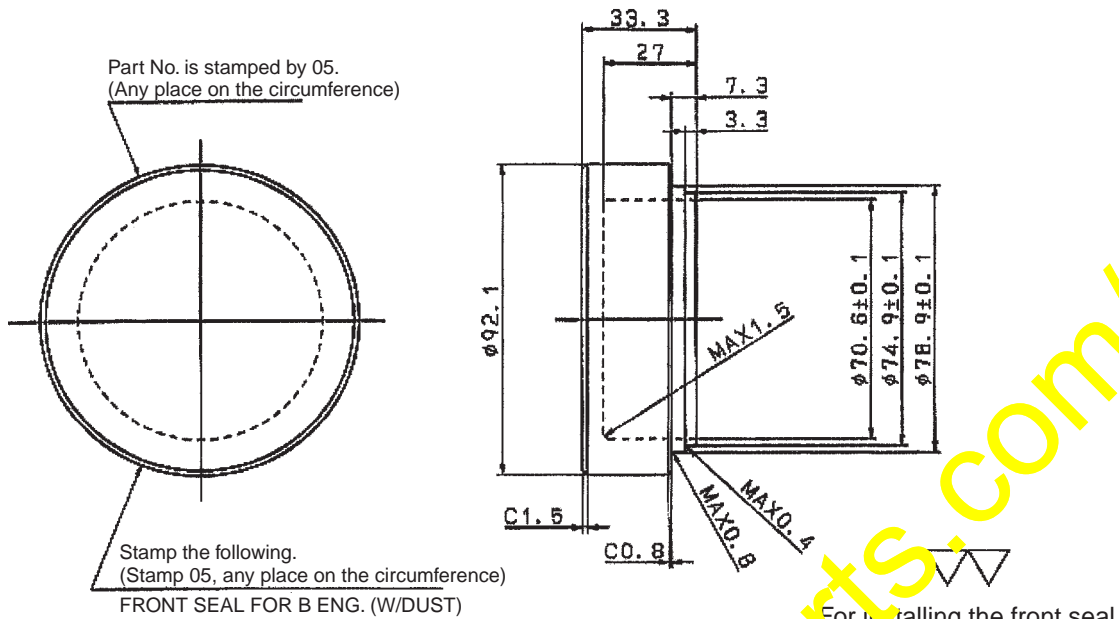
Front Seal / Dust Seal Installation Procedures for 102 Engine

Part No.: 6736-01-3110 (Cummins part No.: 3904351)
 Plastic seal pilot tool (Attached tool of the seal kit for the supply)

This is the piloting tool which is used to install the cover with the seal attached. When the cover is installed to the gear case, a portion is inserted into the front end and the center is aligned. After the installation bolts are tightened, this tool is removed.

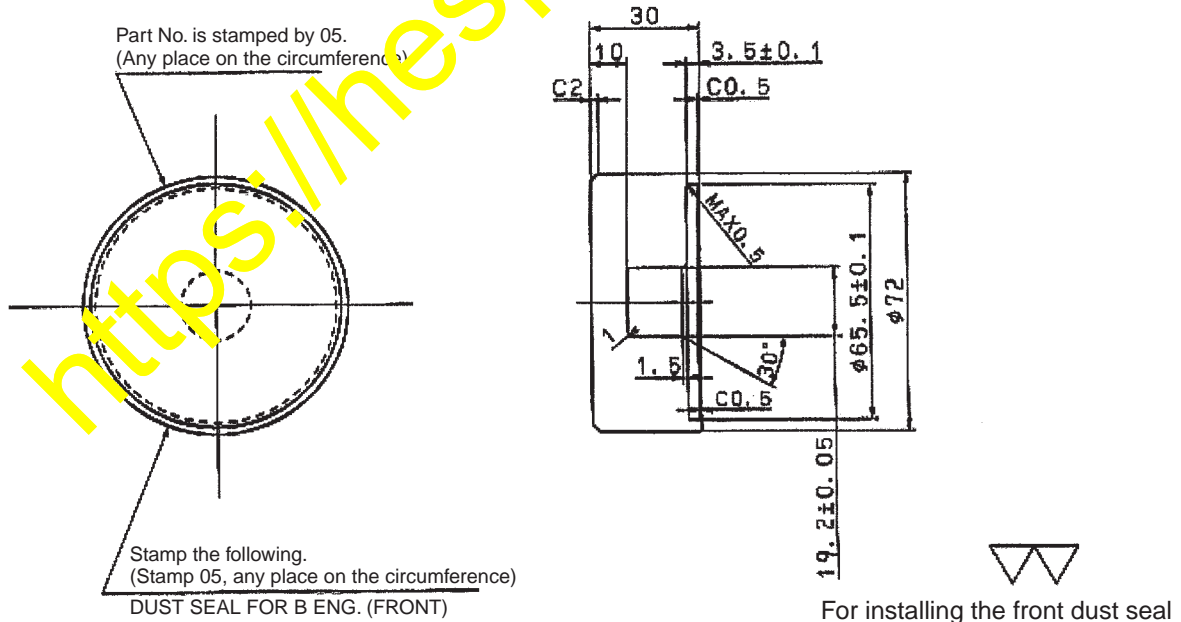


Part No.: 795-799-2610



1. The material is equivalent to S45C.

Part No.: 795-799-2620



1. The material is equivalent to S45C.