

# PARTS & SERVICE NEWS

REF NO.	AT03214
DATE	Nov. 10, 2003
(C)	Page 1 of 4

**SUBJECT:** REPAIR PROCEDURE OF LEANING ROD

**PURPOSE:** To introduce modification procedure to repair the deformed leaning rod

**APPLICATION:**

GD555-3A	Motor Graders, Serial No. 10001 thru 11013
GD555-3C	Motor Graders, Serial No. 50001 thru 51003
GD655-3A	Motor Graders, Serial No. 10001 thru 11006
GD655-3C	Motor Graders, Serial No. 50001 thru 51014
GD675-3A	Motor Graders, Serial No. 10001 thru 11006
GD675-3C	Motor Graders, Serial No. 50001 thru 51000

**FAILURE CODE:** 2AB0EC

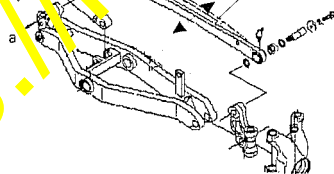
## DESCRIPTION:

### 1. Introduction

If excessive load is applied to the leaning rod of the front axle of the GD555-3, -3A, -3C, GD655-3, -3A, -3C and GD675-3, -3A, -3C motor graders, the leaning rod may be deformed depending on the operating conditions.

If the leaning rod has been deformed, change it to the improved parts with increased rigidity.

Deformation of the leaning rod  
(Toward the forward or backward direction)



2. List of parts

Part numbers of necessary parts differ depending on the machine models.

Part No.	Part Name	Purpose of part	Q'ty	Remarks
<GD555-3A, 3C>				
23A-27-31233 (23A-27-31232)	Rod, leaning (Rod, leaning)	} Replacement	1 (1)	} Consumable parts to re- place when making the repair
01011-82405 (01010-82495)	Bolt (Bolt)		1 (1)	
23A-27-11630	Bushing		2	
07145-00045	Seal		4	
04050-16045	Pin, cotter		2	
<GD655-3, 3A, 3C, GD675-3A, 3C>				
23B-27-31234 (23B-27-31232)	Rod, leaning (Rod, leaning)	} Replacement	1 (1)	} Consumable parts to re- place when making the repair
01011-82405 (01010-82495)	Bolt (Bolt)		1 (1)	
23B-27-11630	Bushing		2	
07145-00050	Seal		4	
04050-16045	Pin, cotter		2	

<https://hespareparts.com/>

### 3. Modification procedure

Replace the leaning rod with the improved parts (with increased rigidity).

(Fig. 1 and Table 1)

(1) Remove the cotter pin (2) on both ends of the leaning rod (1) and remove the nuts (3) and washers (4), (8).

(2) Remove the leaning rod (1) with the bushing (5) and the seal (6) installed.

Weight of the leaning rod (1): 29 kg

(3) Install the newly arranged improved leaning rod (1') in the reversed procedure to the removal procedure. (Refer to the Table 1 for the part numbers.)

- Reuse the grease fitting (7) and regarding the direction of installation, refer to Fig. 2.
- Replace the bushing (5), seal (6) and cotter pin with the new parts when carrying out the reinstallation work for the leaning rod. (Part numbers are the same.)
- Refer to Fig. 2 regarding the tightening torque for the nut (3).
- Refer to Fig. 3 regarding the installation procedure for the seal (6).

Weight of the leaning rod (1'): 40 kg

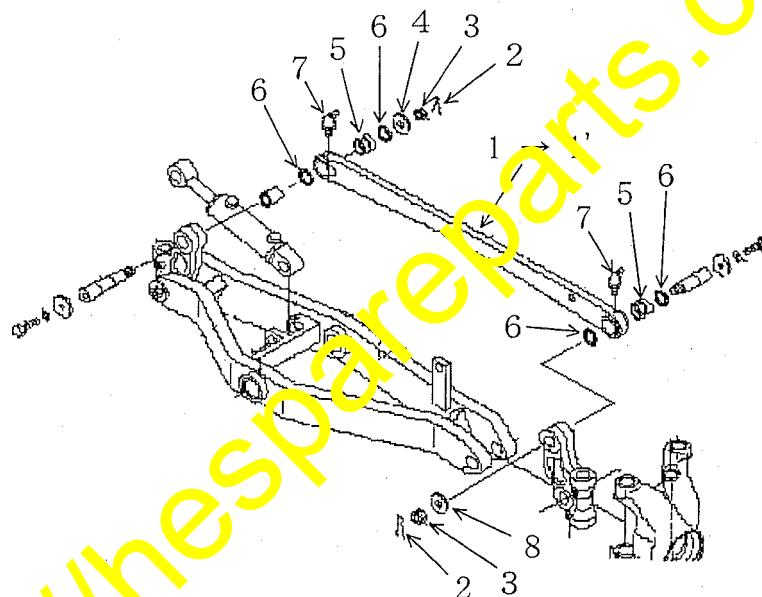


Fig. 1

Table 1

No.	<GD555-3A, 3C>			<GD655/675-3, 3Y, 3A, 3C>			Remark
	Parts No.	Parts name	Q'ty/set	Parts No.	Parts name	Q'ty/set	
1	23A-37-31232	Rod, leaning	1	23B-37-31232	Rod, leaning	1	Old
1'	23A-37-31233	Rod, leaning	1	23B-27-31234	Rod, leaning	1	New
2	04050-16045	Pin, cotter	2	04050-16045	Pin, cotter	2	★1
3	01593-33018	Nut	2	01593-33018	Nut	2	Re-use
4	23A-27-11640	Washer	1	23B-27-11640	Washer	1	Re-use
5	23A-27-11630	Bushing	2	23B-27-11630	Bushing	2	★1
6	07145-00045	Seal	4	07145-00050	Seal	4	★1
7	07020-00675	Fitting, grease	2	07020-00675	Fitting, grease	2	Re-use
8	01643-33080	Washer	1	01643-33080	Washer	1	Re-use

★1: Replace these parts with new parts when carrying out the reinstallation work for the leaning rod.

Tightening torque for the nuts

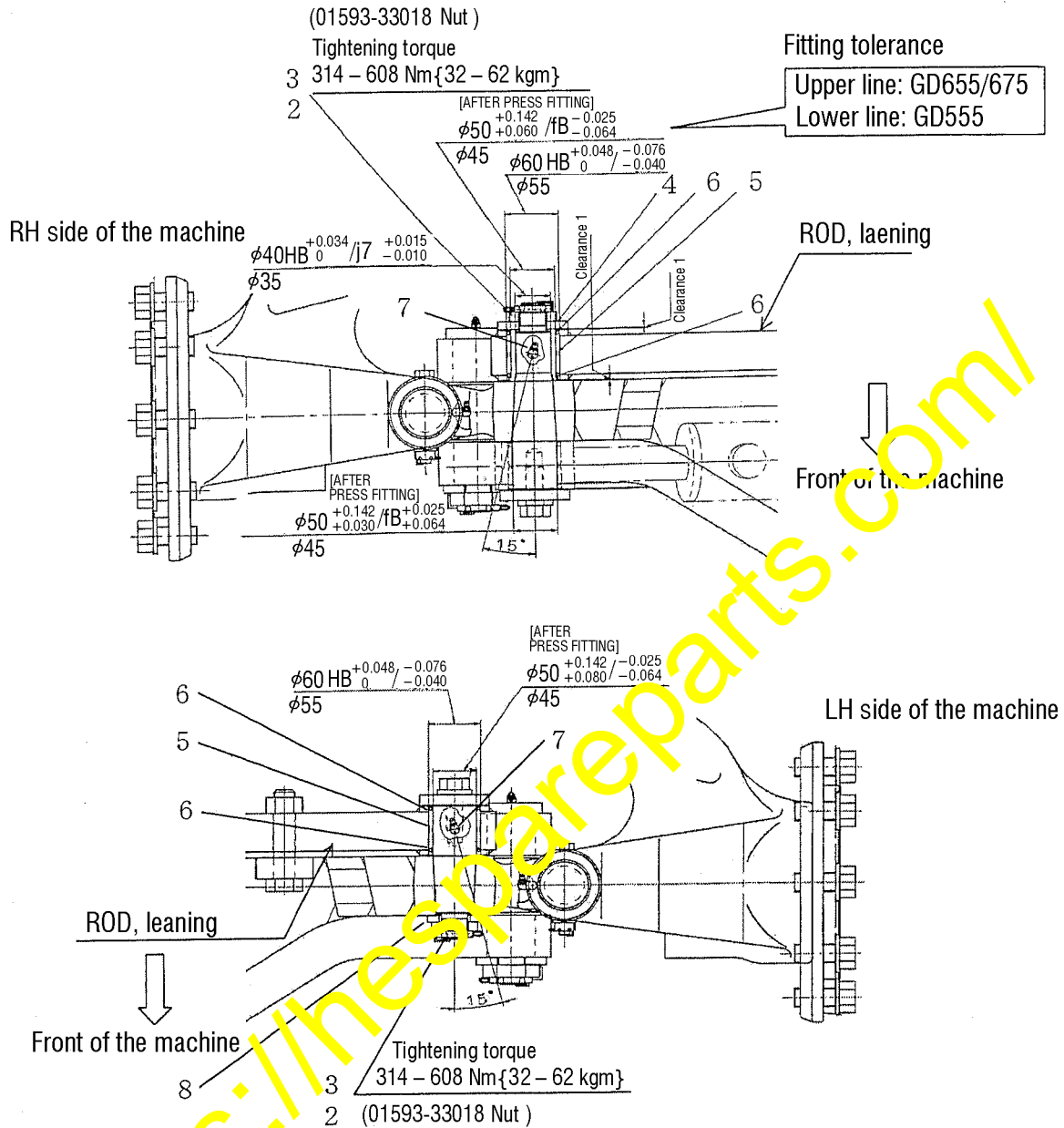


Fig. 2

Installation of the dust seal

Install the dust seal referring to Fig. 3 shown below.

Apply sufficient quantity of G2-LI to each seal lip before inserting into the shaft.

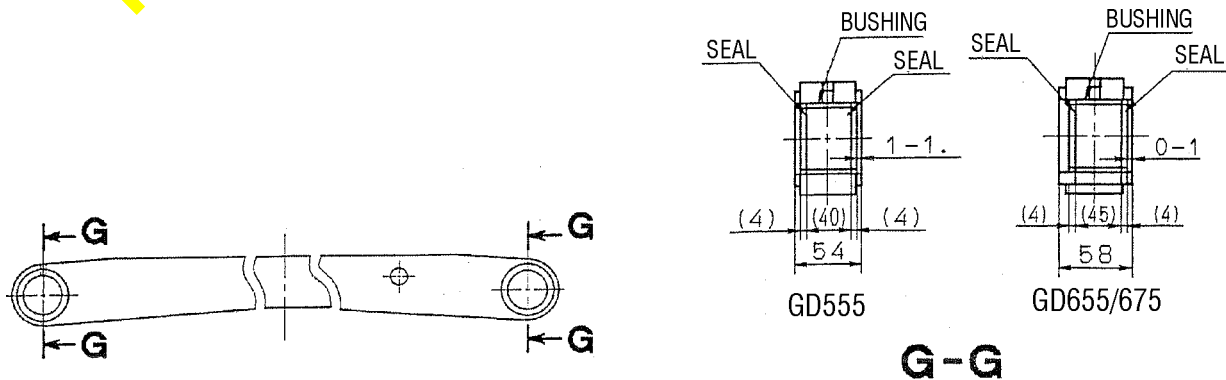


Fig. 3